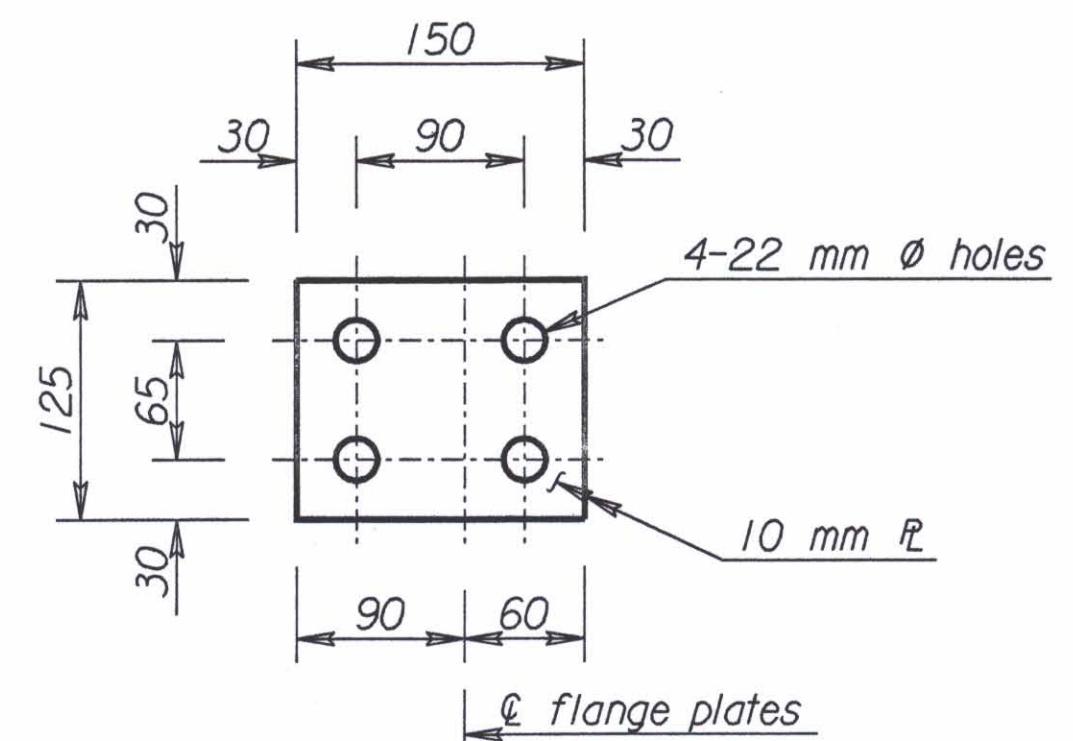
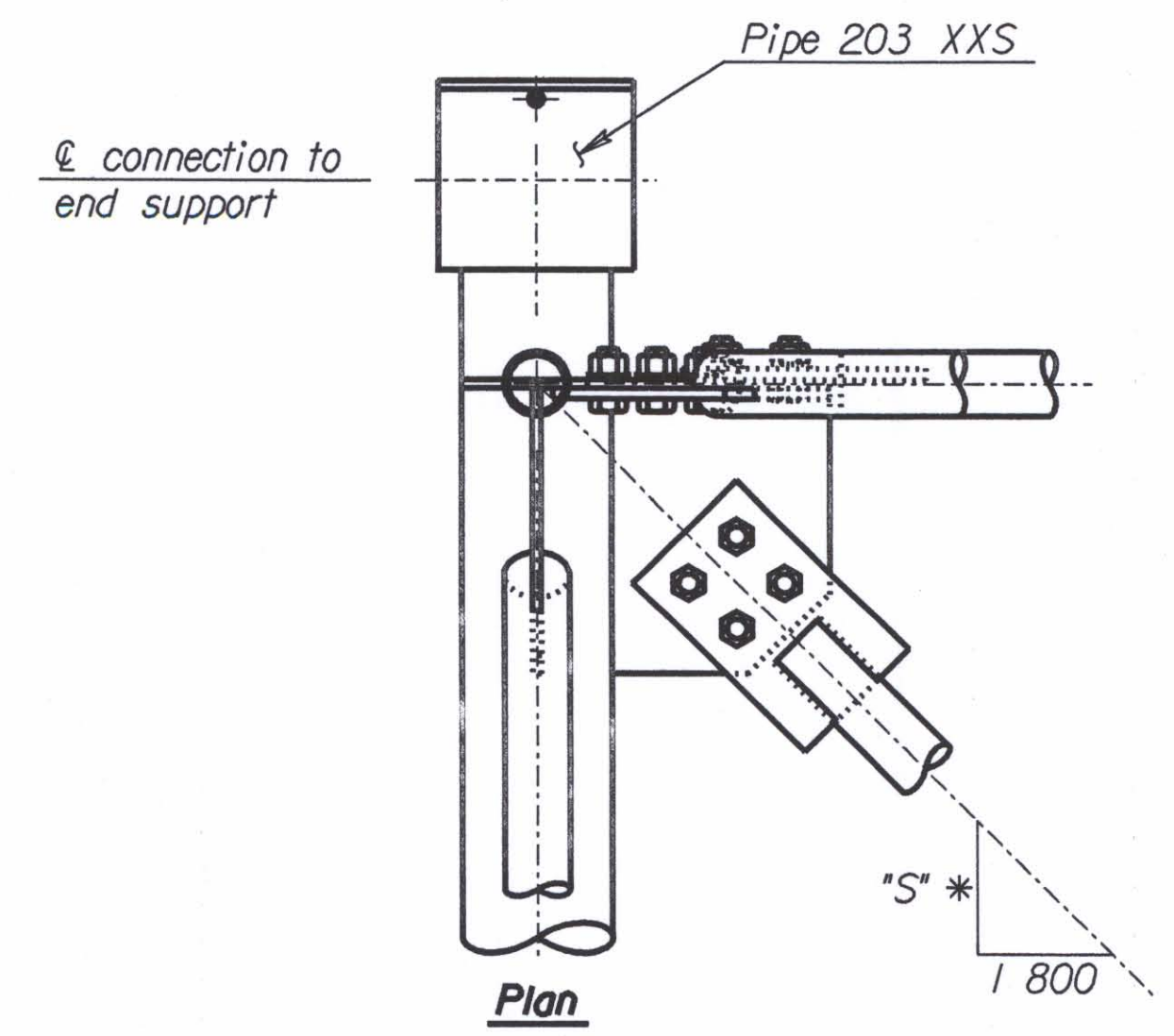


TYPE I JOINT DETAILS

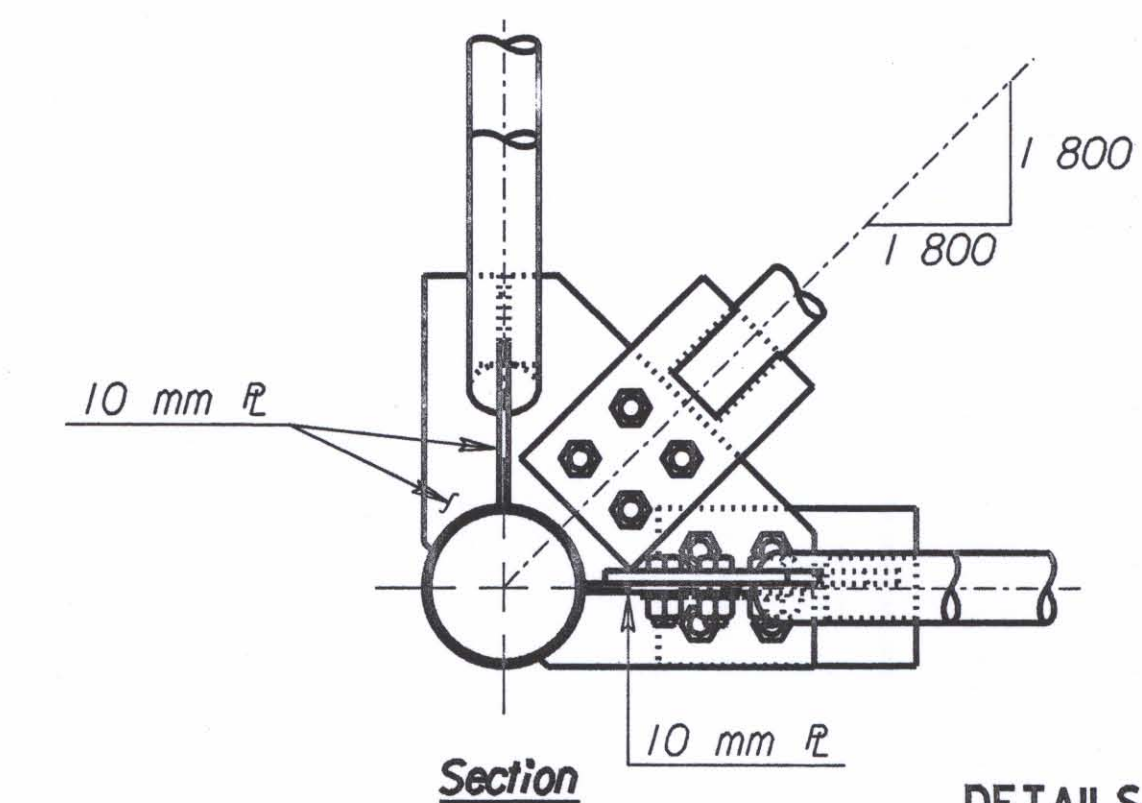


SPLICE PLATE DETAILS

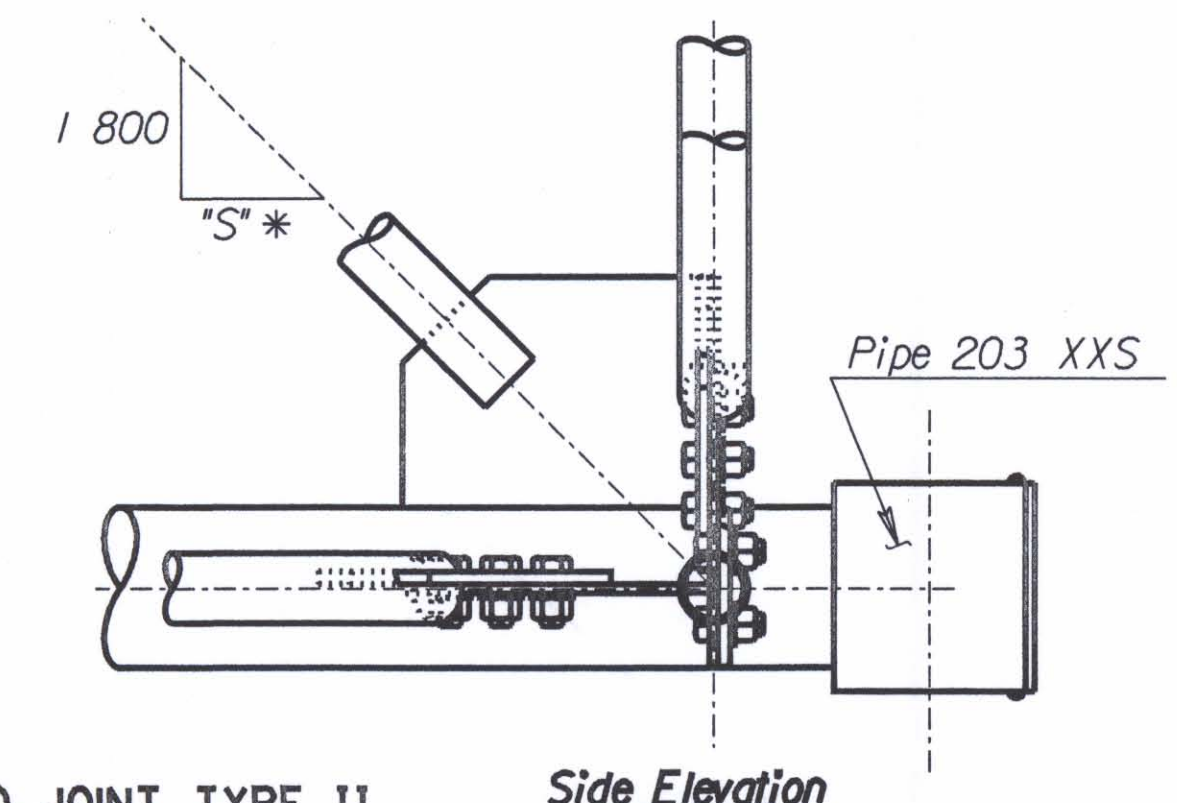


Plan

NOTE: Clip 3 mm from the washers for the M24 x 3 bolts in the Type II joints to clear weld.

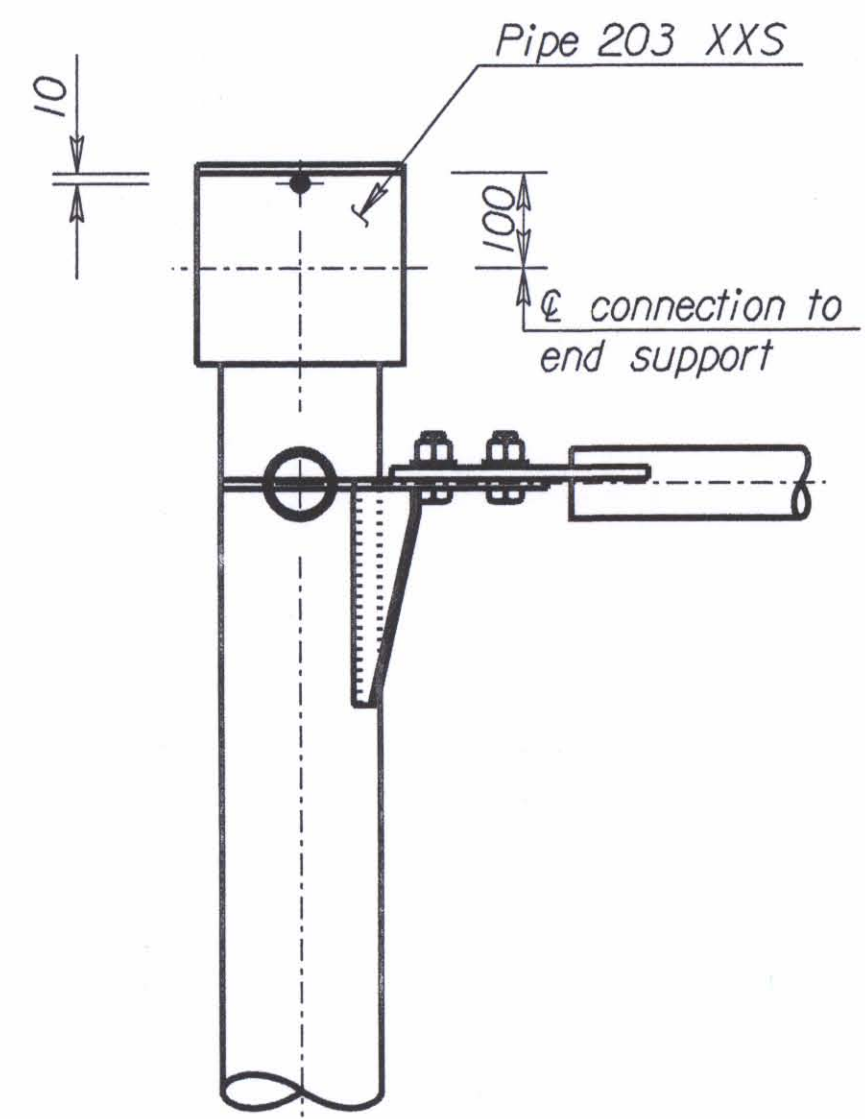


Section

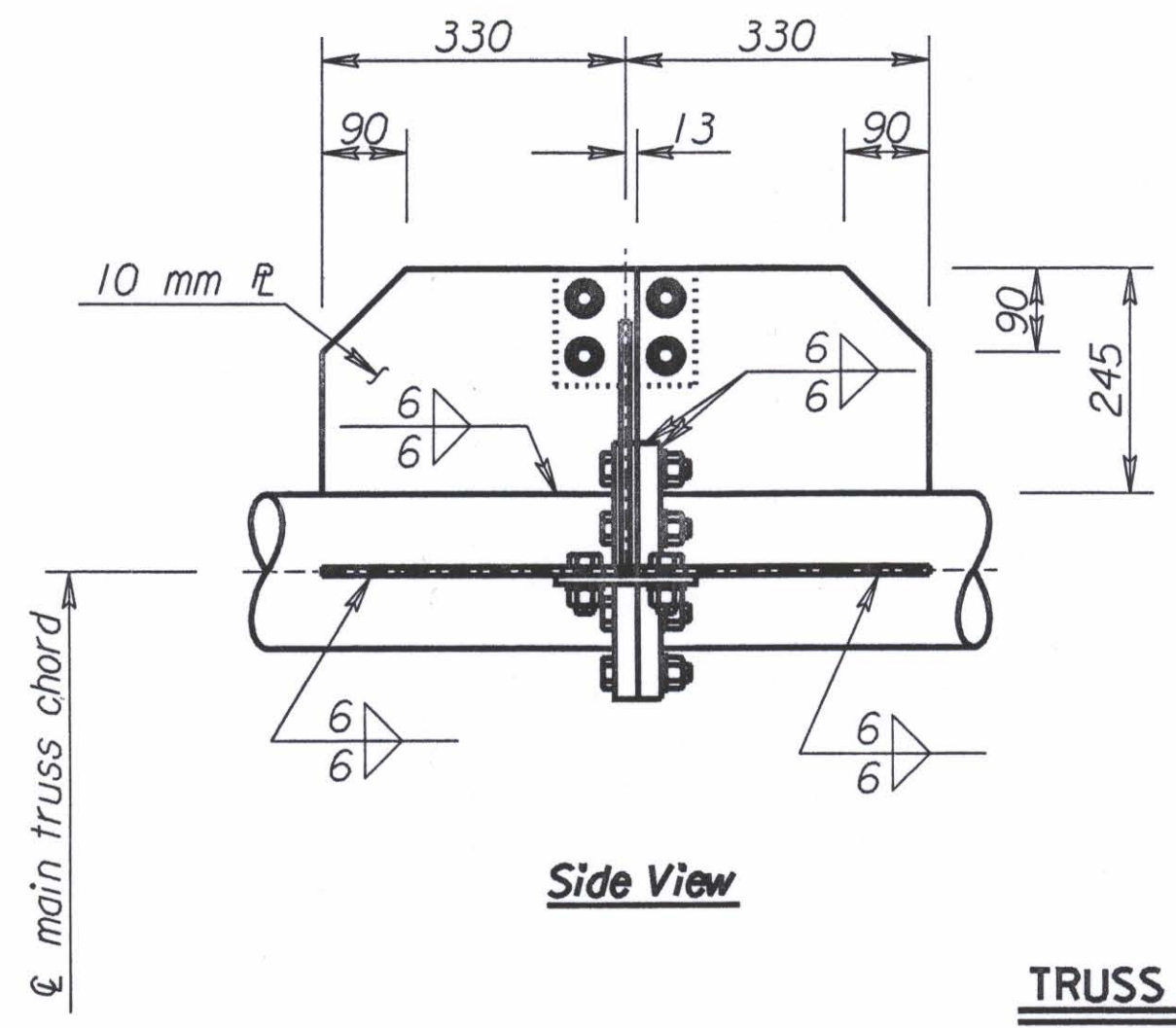


Side Elevation

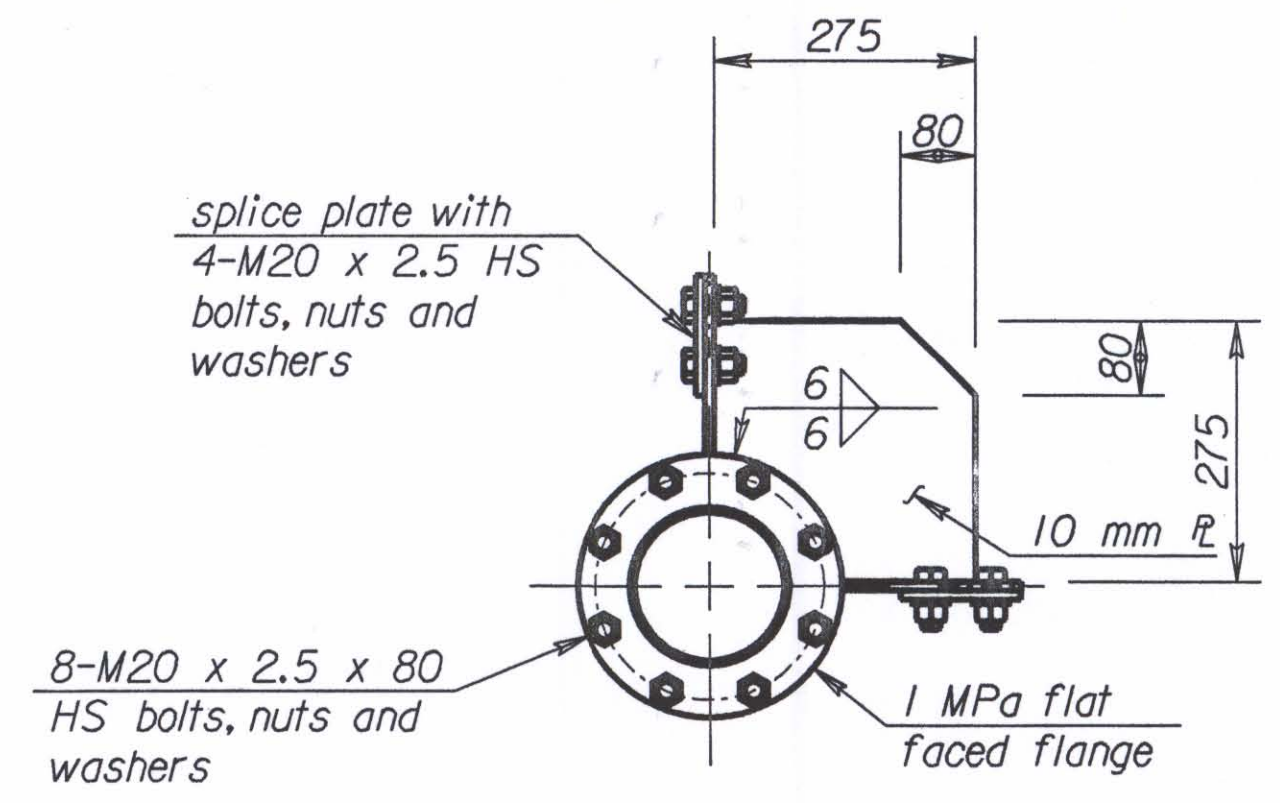
DETAILS END JOINT TYPE II
(showing welded and bolted connections mixed)



Plan



Side View



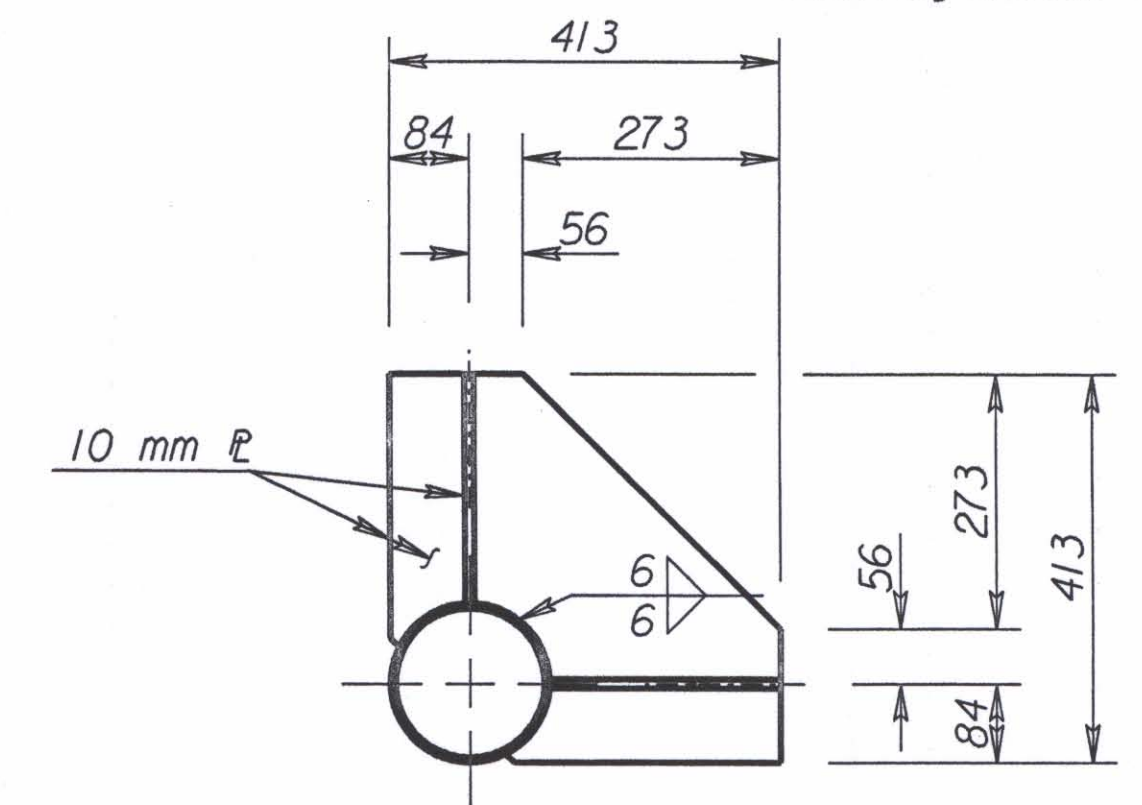
End View

TRUSS SPLICE DETAILS

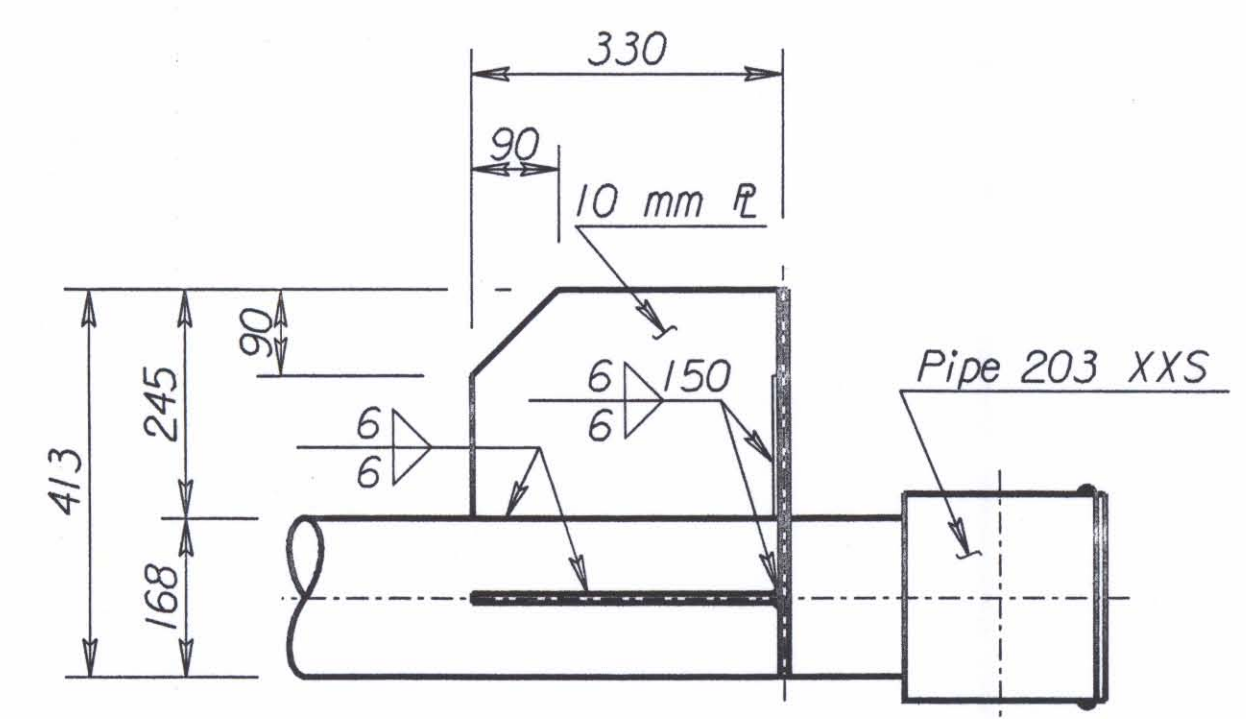
splice plate with 4-M20 x 2.5 HS bolts, nuts and washers

8-M20 x 2.5 x 80 HS bolts, nuts and washers

1 MPa flat faced flange

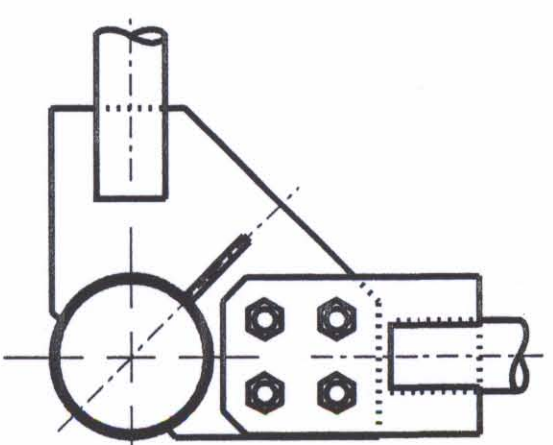


End View

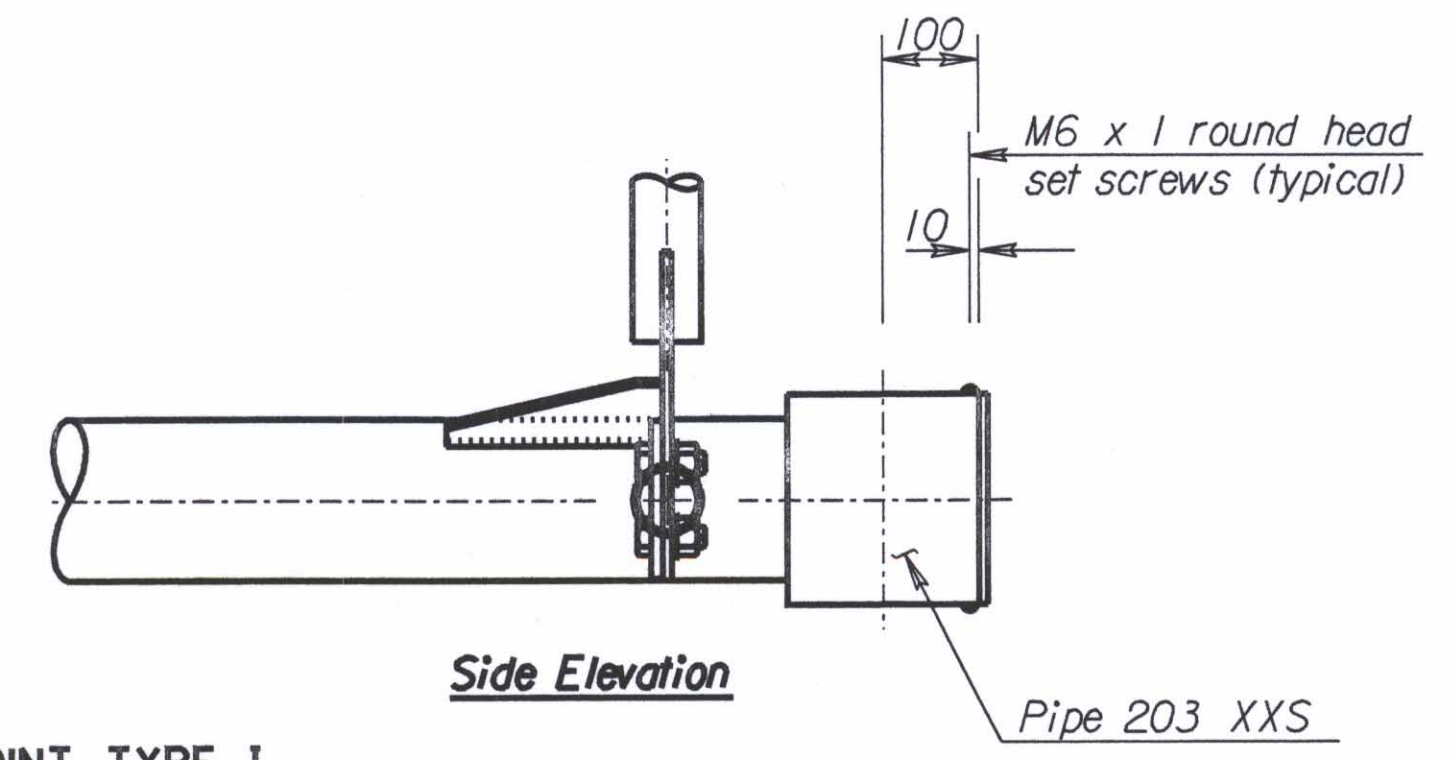


Side View

TYPE II JOINT DETAILS



Section

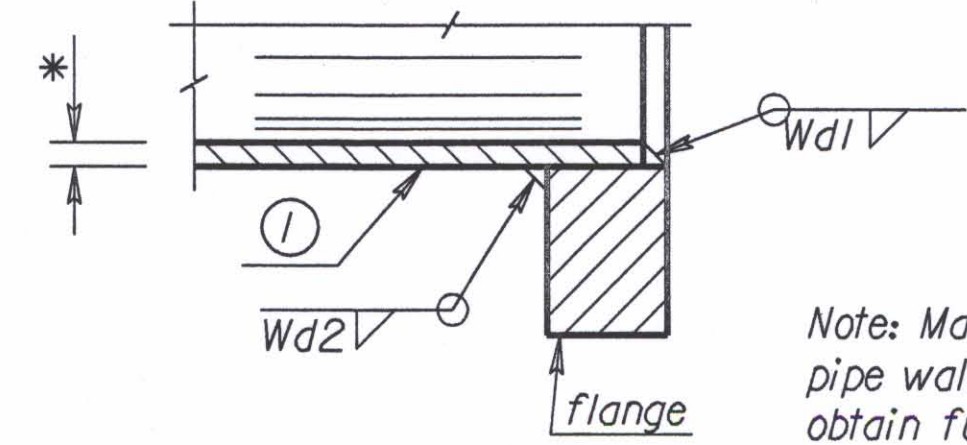


Side Elevation

DETAILS END JOINT TYPE I
(showing welded and bolted connections mixed)

Member ①*	Fillet Weld size Wd2
4.78	5
5.56	6
7.11	8
8.74	8
11.0	10

* See "Construction Layout" for wall thickness and "S"



Section

Note: Make Wd1 depth equal to pipe wall thickness, build out to obtain full throat.

STEEL NOT USED.

NO.	DATE	REVISIONS	BY	APP'D
KANSAS DEPARTMENT OF TRANSPORTATION				
STANDARD STRUCTURAL SIGN SUPPORTS				
SPAN TYPE OVERHEAD				
STEEL ALTERNATE				
TRUSS END JOINT AND SPLICE DETAILS				
SL151C-04 SI SEDGWICK CO.				
DESIGNED	BFM	DETAILED	KFH	QUANTITIES
DESIGN CL.	RDH	DETAIL CL.	RDH	QUAN. CL.
				Kenneth F. Hurst
				CADD
				DJE
				LES

Std. Base File: s1151csi.dgn - Plot 4
 Plotted By: \$\$/SERNAME\$\$ | Plot Location: \$\$/UNIT\$
 File: \$\$\$\$\$\$\$\$\$\$DGN\$PEC\$\$\$\$\$\$\$\$\$
 Plot Date: \$\$\$\$\$\$STIME\$\$\$\$\$\$\$