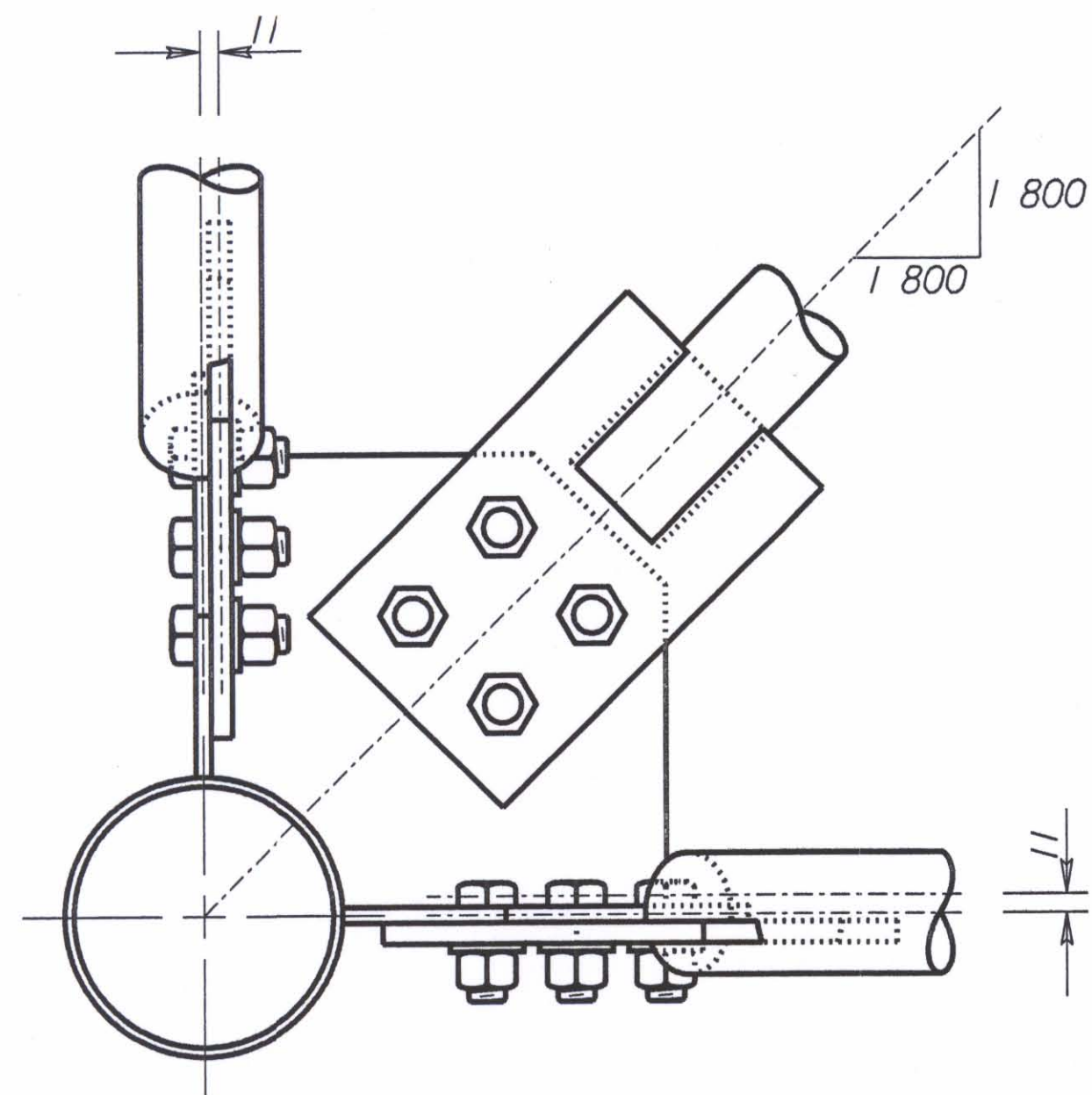
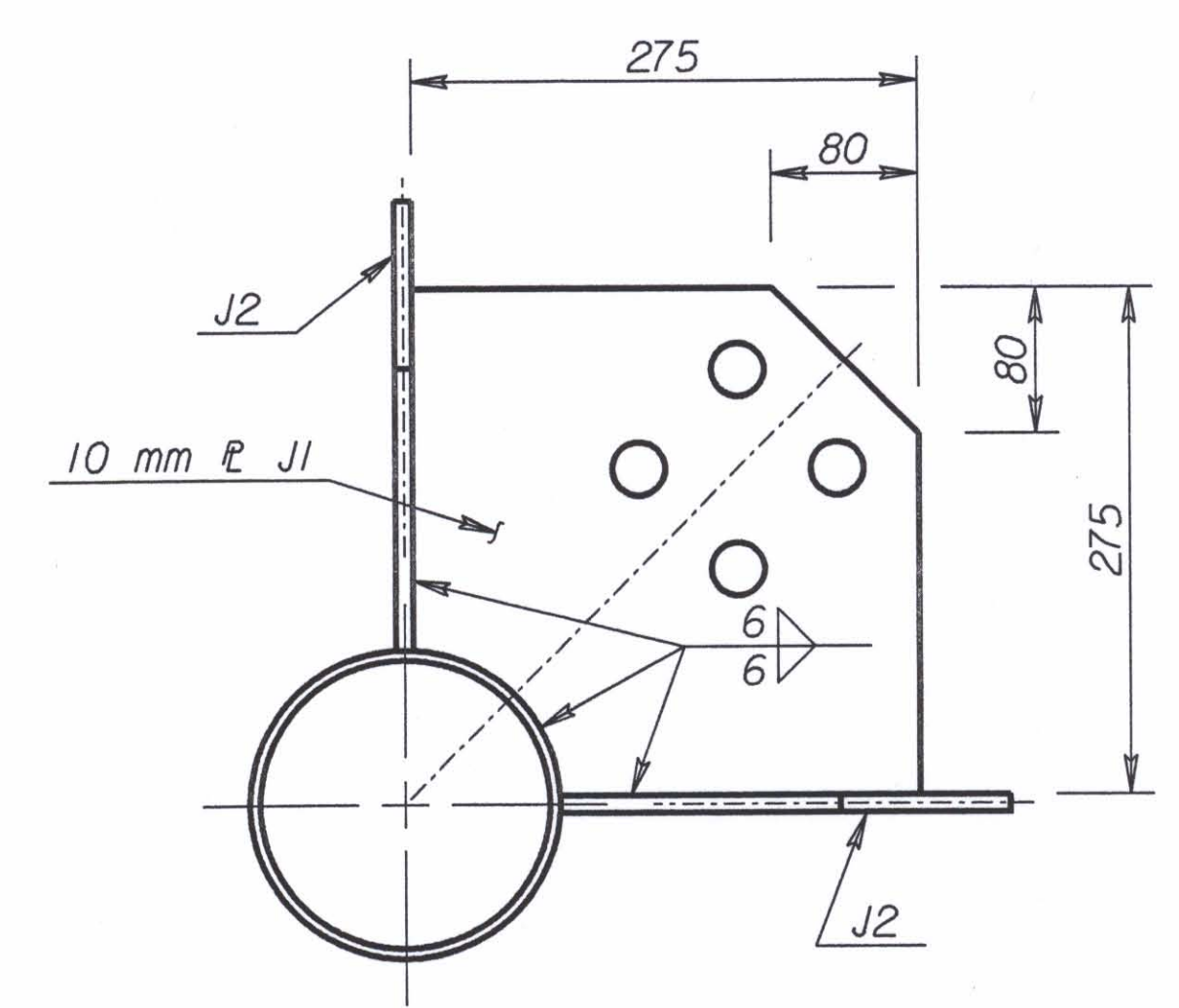


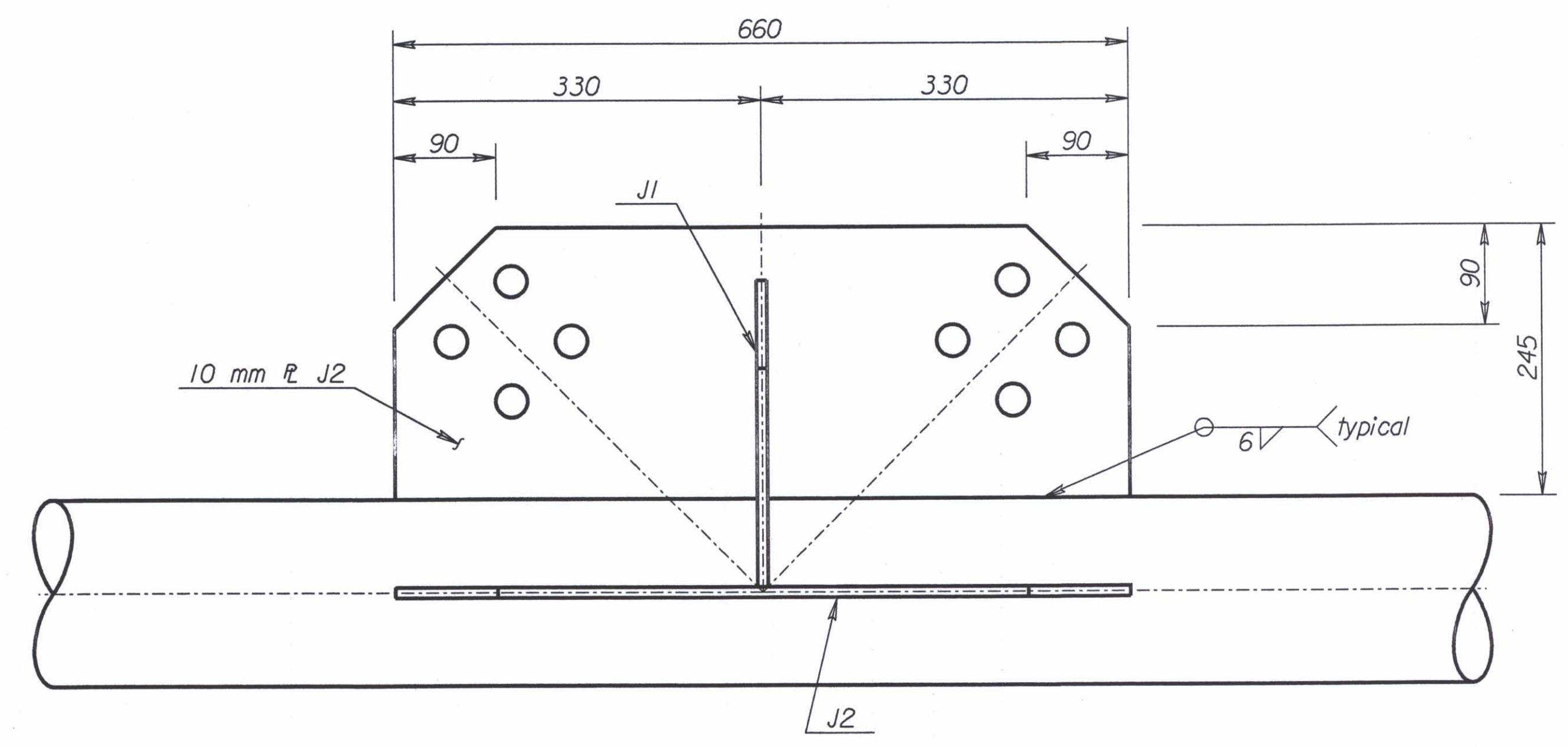
PLAN AT JOINT



SECTION NEAR JOINT



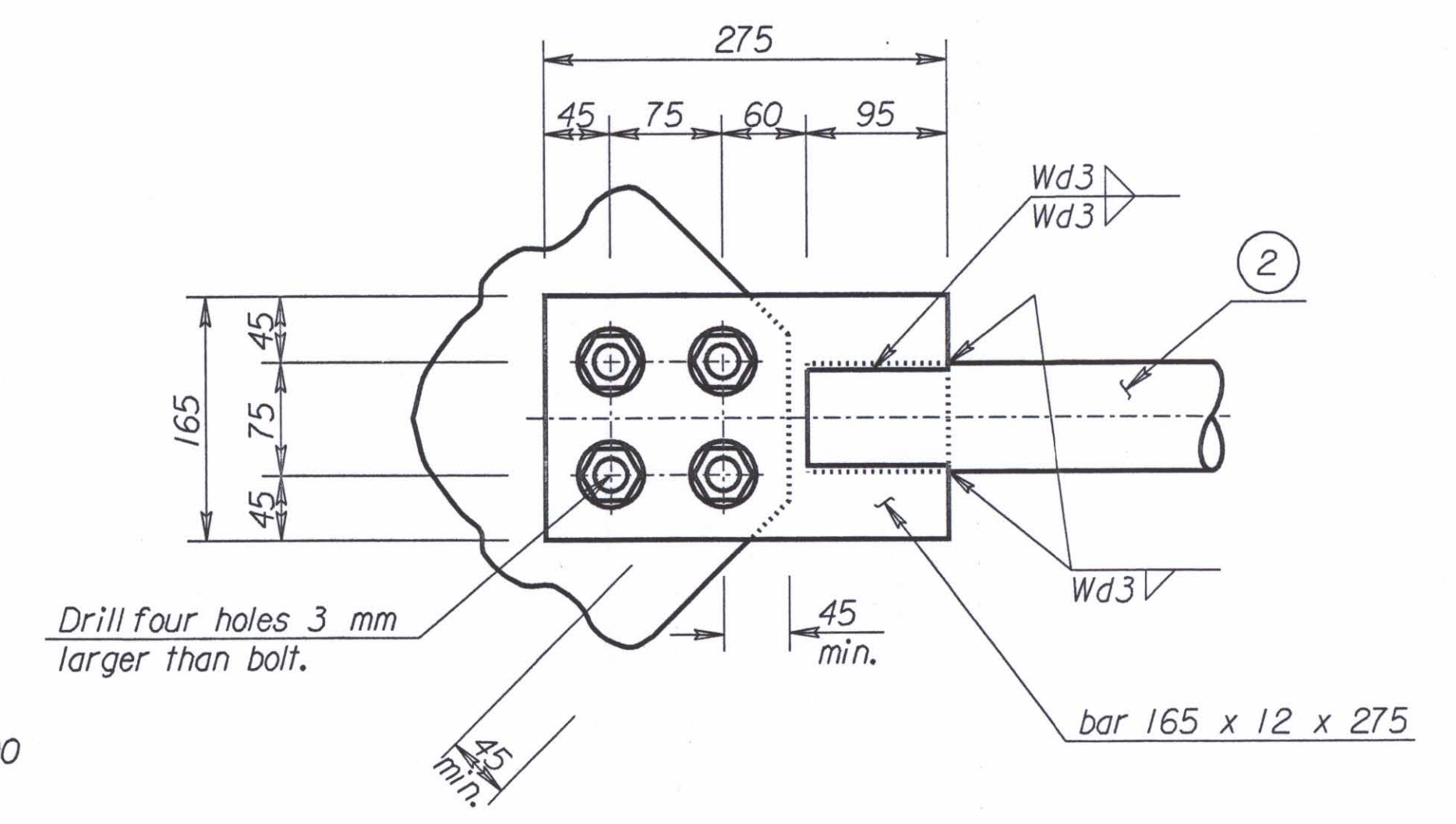
DETAILS R J1



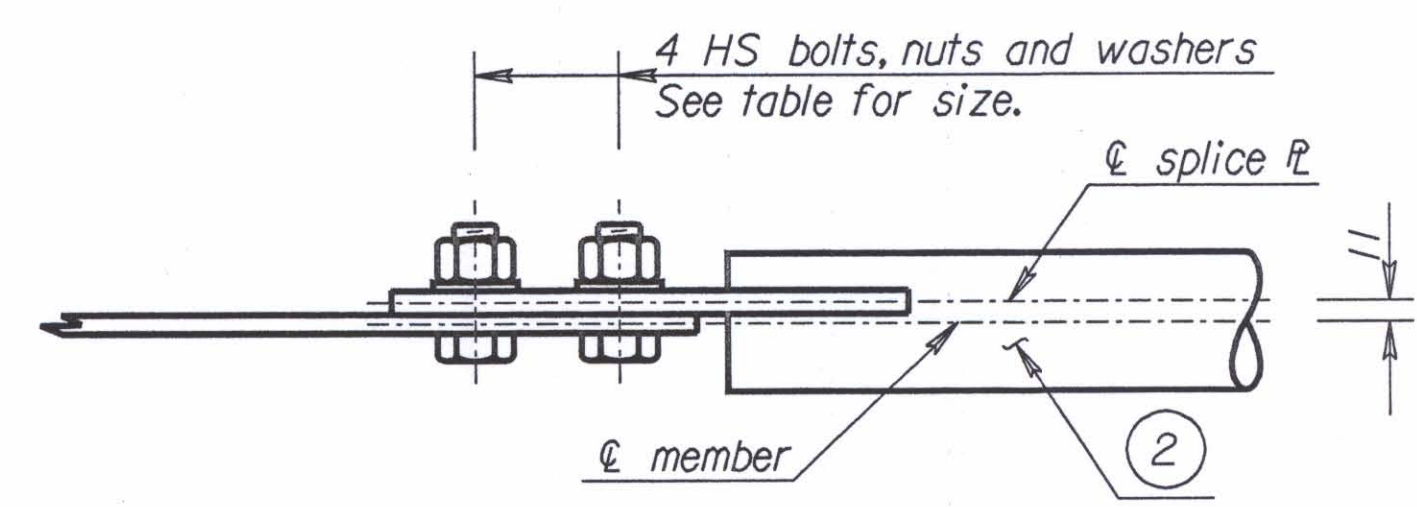
DETAILS R J2

Member ② * wall thickness	Fillet Weld size Wd3	Bolt Size
3.05	5	M20 x 2.5 x 60
5.16		M22 x 2.5 x 60
7.01	6	M24 x 3 x 65

* See "Construction Layout" for wall thickness and "S"

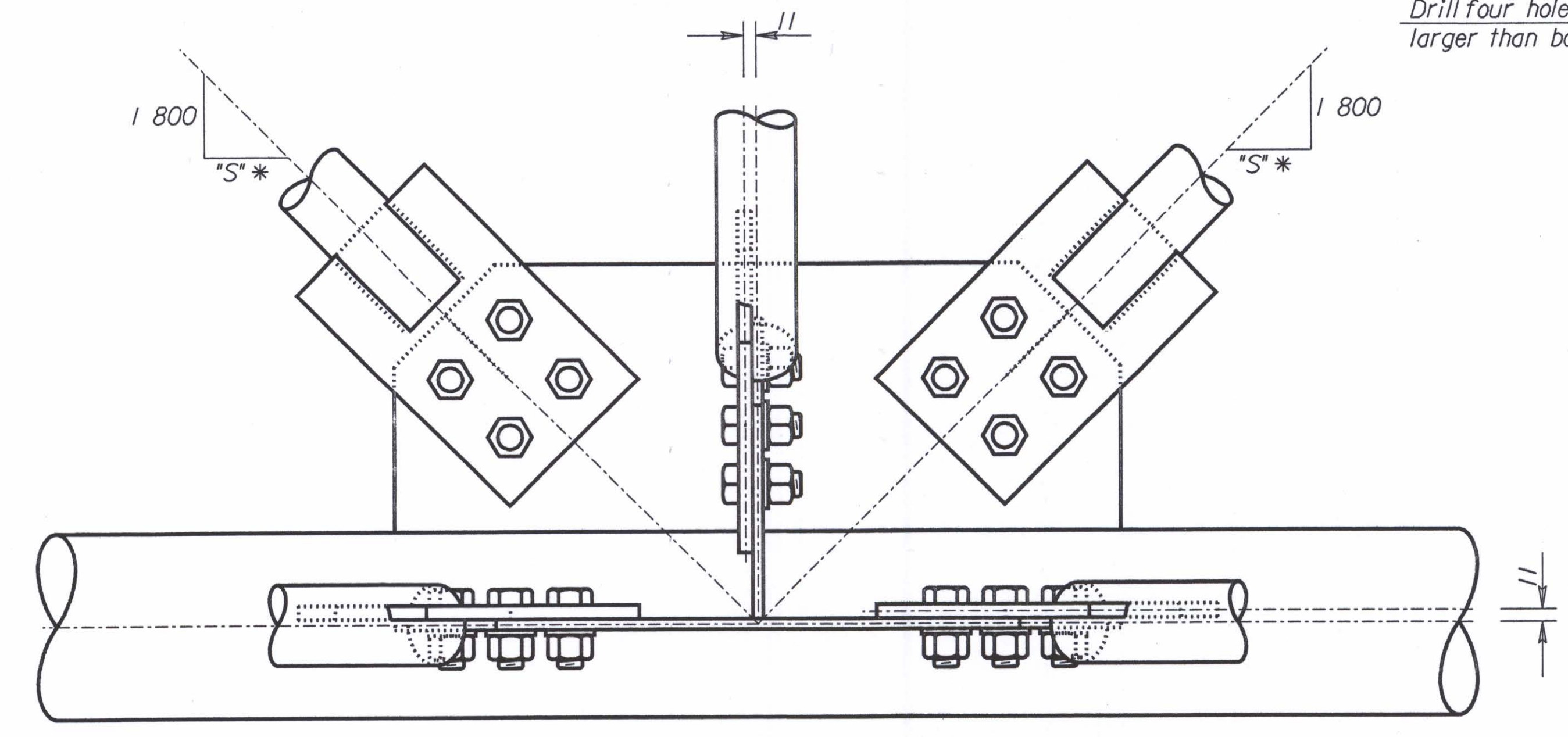


Drill four holes 3 mm larger than bolt.



TYPICAL BOLTED JOINT

Note: Welded and bolted option may be mixed for a given truss or at a given point.



ELEVATION AT JOINT

TYPICAL DETAILS

STEEL NOT USED

NO.	DATE	REVISIONS	BY	APP'D

KANSAS DEPARTMENT OF TRANSPORTATION
STANDARD STRUCTURAL SIGN SUPPORTS
SPAN TYPE OVERHEAD
STEEL ALTERNATE
TRUSS JOINT DETAILS (BOLTED OPTION)
 SL151C-06 SI SEDGWICK CO.

DESIGNED BY BFM DETAILED BY KFH QUANTITIES BY RDH
 DESIGN CK. RDH DETAIL CK. RDH QUANT. CK. RDH

4-10-97 APP'D Kenneth F. Hurst
 CADD DJE
 LES

Std. Base File: sl151c06.dgn - Plot 6
 Plotted By: \$USER\$
 File: \$\$\$\$\$\$DGN\$SPEC\$
 Plot Date: \$\$\$\$\$\$STIME\$\$\$\$\$\$\$\$