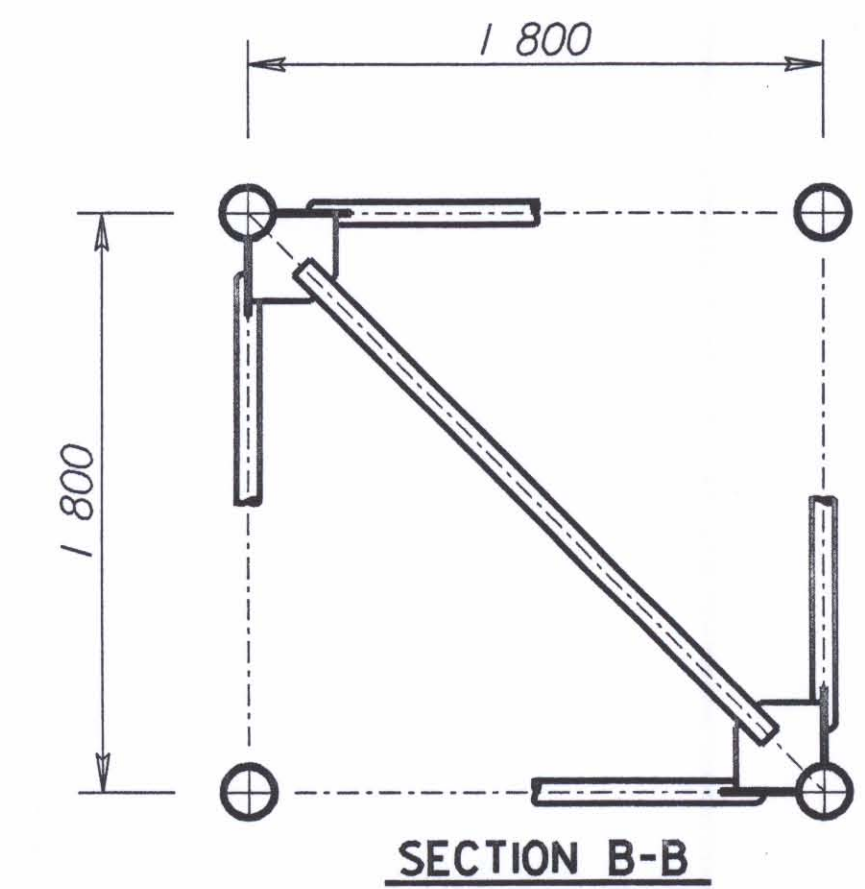
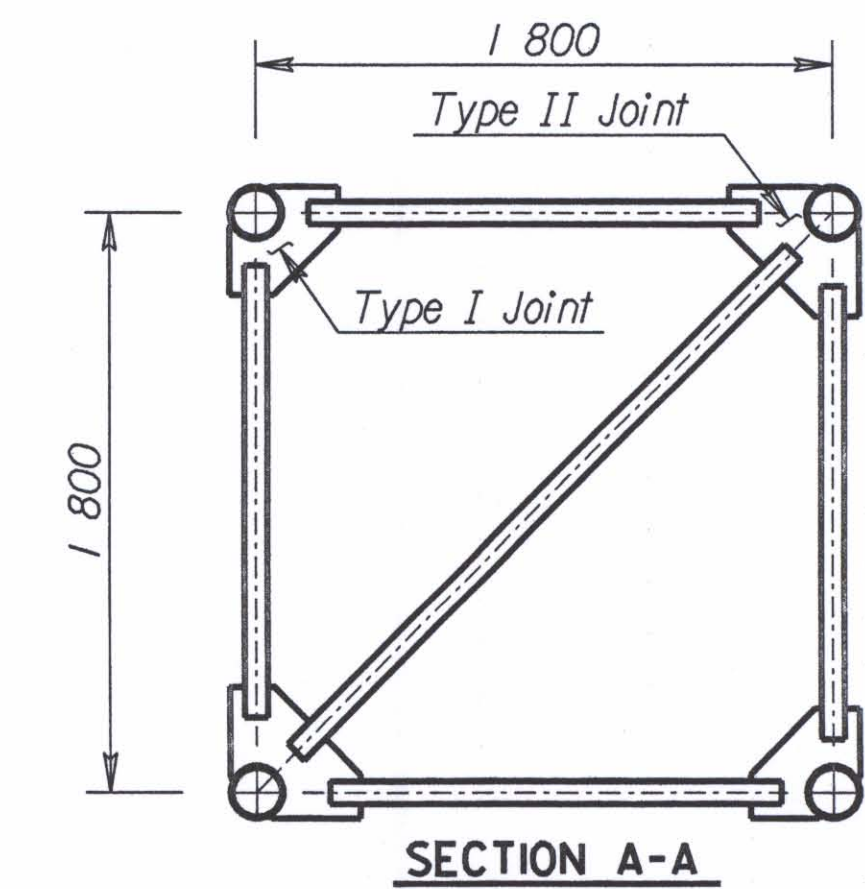
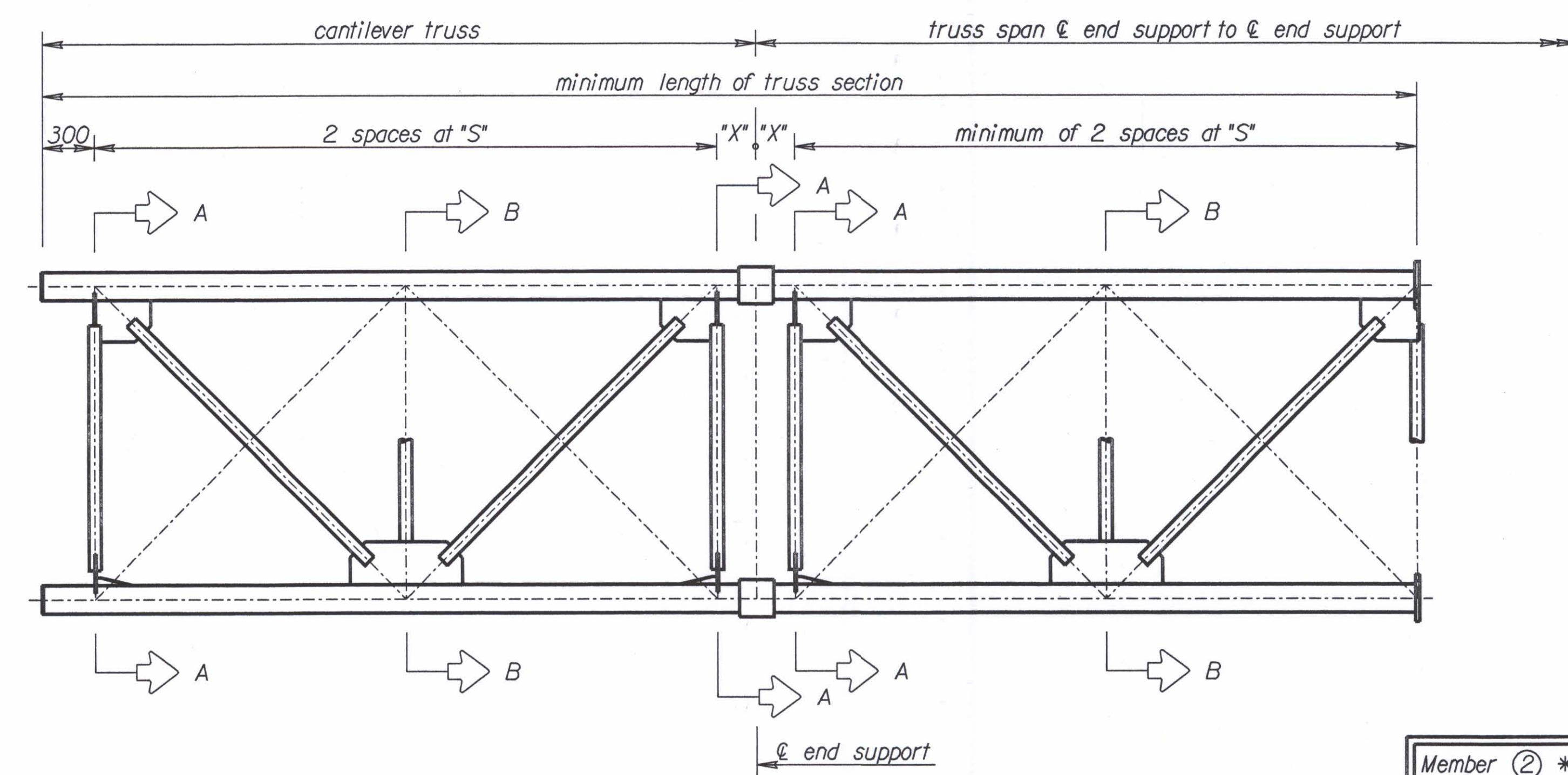
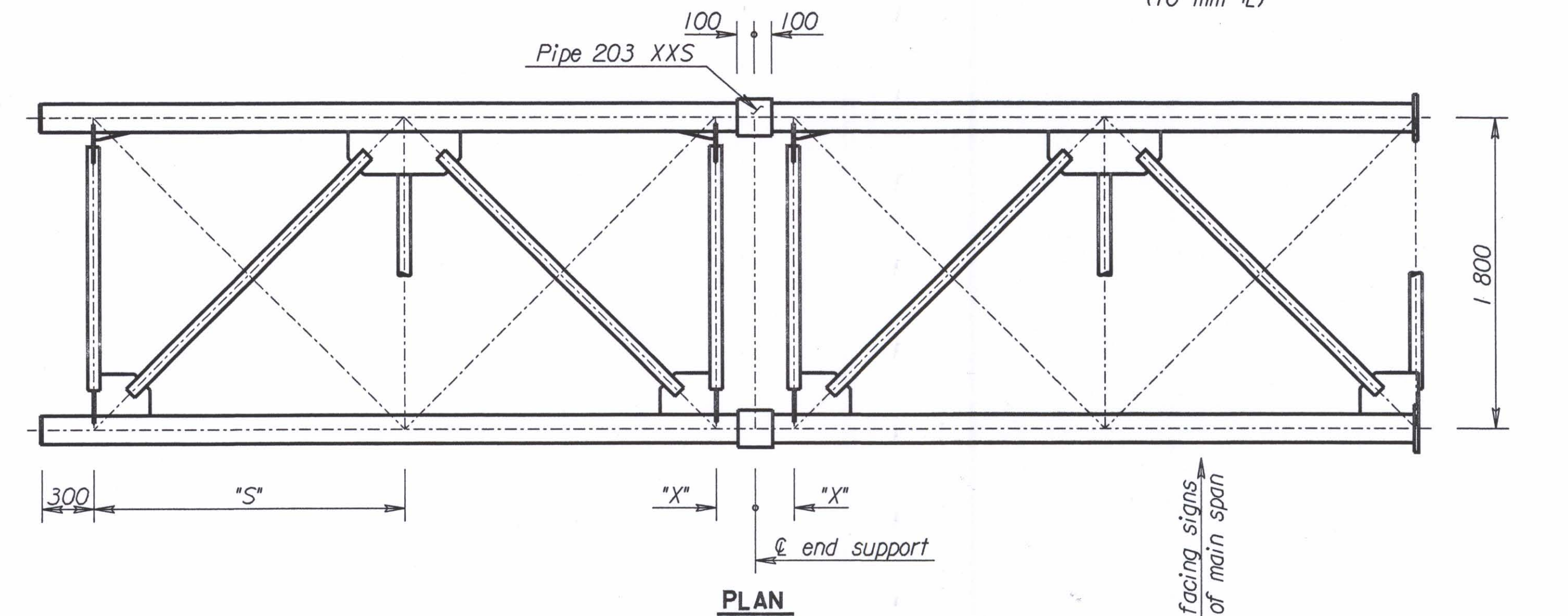
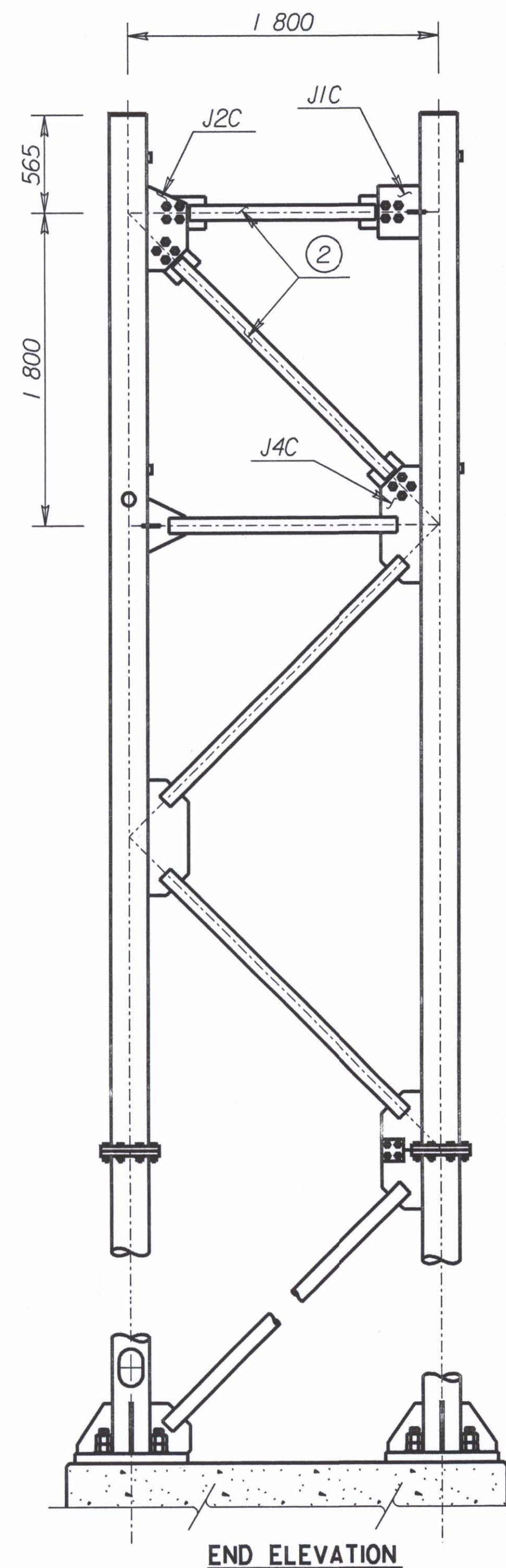
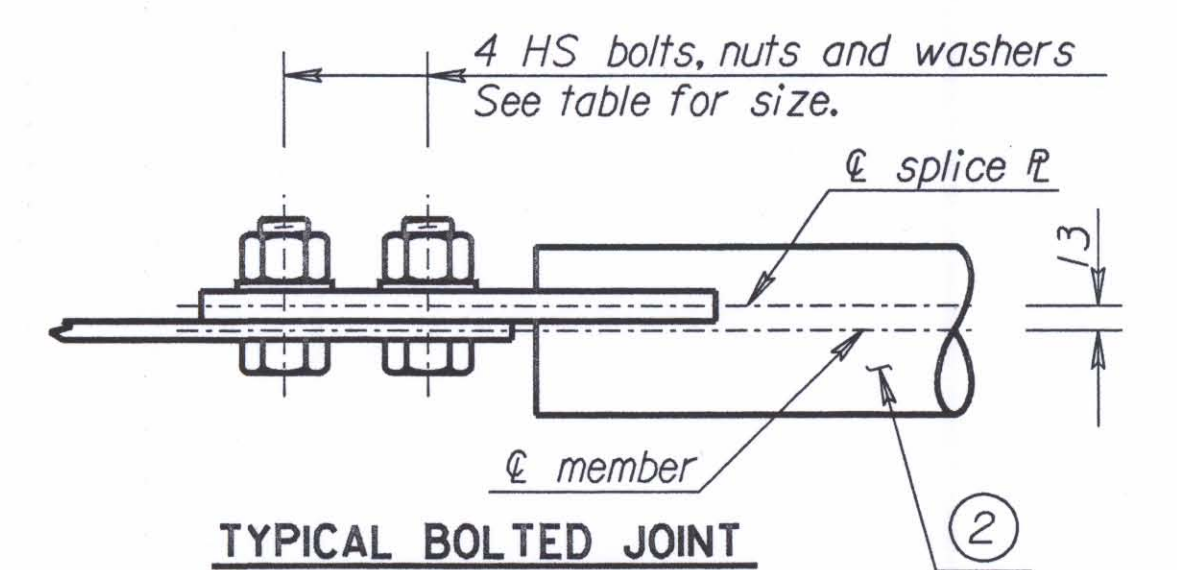
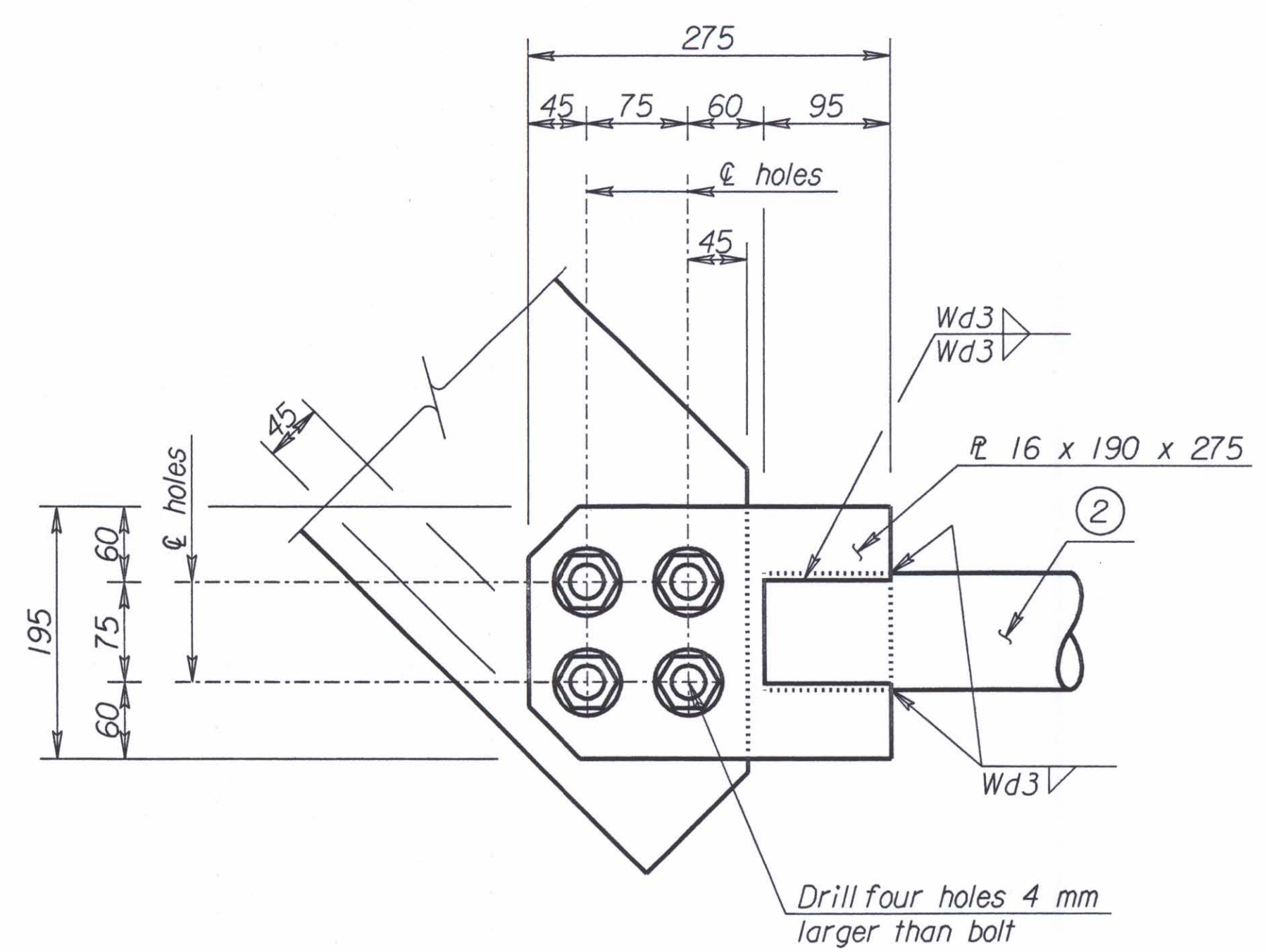
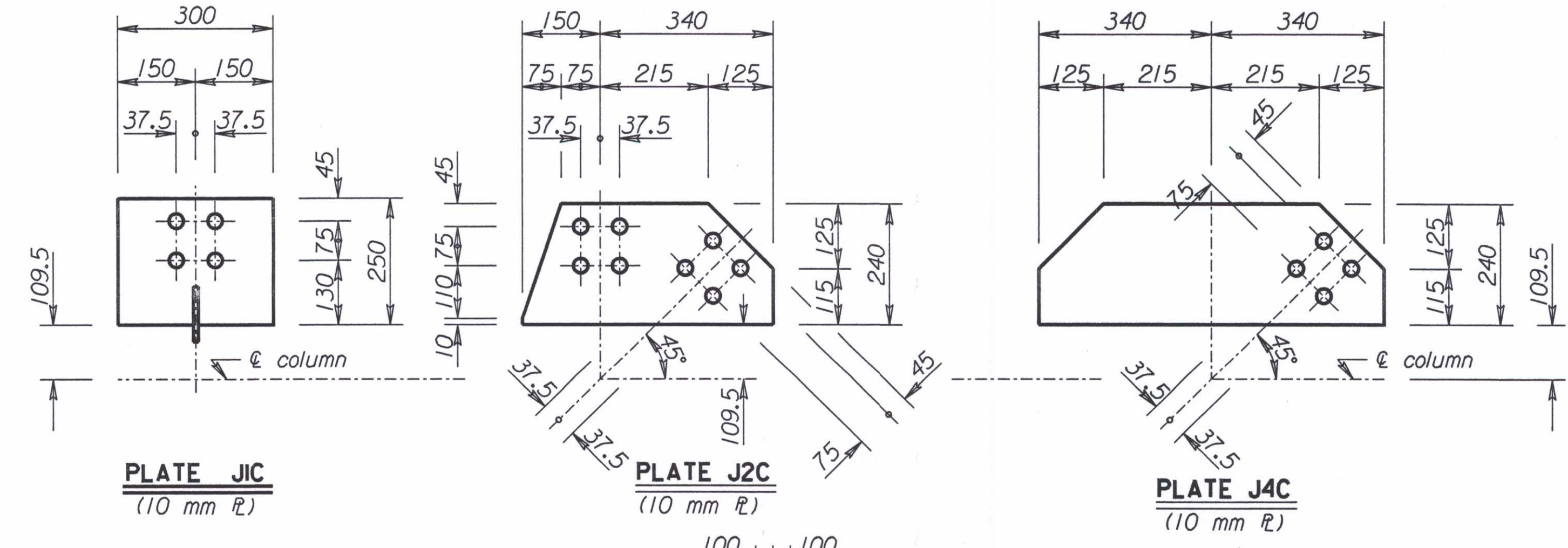


STATE	PROJECT NO.	YEAR	SHEET NO.	TOTAL SHEETS
KANSAS	54-87 K-6657-01	2002	785	1122

Note: This sheet shows only those details of the cantilever-truss that differ from the standard truss details. Refer to the standard truss details for any details not shown on this sheet.

Note: This sheet shows the bolted option for the cantilever end support. The Contractor may choose to fabricate the end support exactly as shown for the standard truss, except that the top two secondary members would be welded into place in the field after the truss is erected. Give the areas around these field welds two coats of "Zinc Rich Coating".



Member ② * wall thickness	Fillet Weld size Wd3	Bolt Size
3.18	5	M20 x 2.5 x 60
5.49	6	M24 x 3 x 65
7.62	8	M27 x 3 x 70

\* See "Construction Layout" for wall thickness, "S" and "X".

STEEL NOT USED

Std. Base File: s15\csi.dgn - Plot 8  
 Plotted By: \$USER\$  
 File: \$\$\$\$  
 Plot Date: \$\$\$\$

NO.	DATE	REVISIONS	BY	APP'D
KANSAS DEPARTMENT OF TRANSPORTATION STANDARD STRUCTURAL SIGN SUPPORTS CANTILEVER-SPAN TYPE OVERHEAD STEEL ALTERNATE TRUSS END SUPPORT AND SPECIAL DETAILS SL15IC-08 SI				
DESIGNED			APP'D	
LRR DETAIL			Kenneth F. Hurst	
LRR QUAN.			CADD	
LRR QUAN.			CADD	