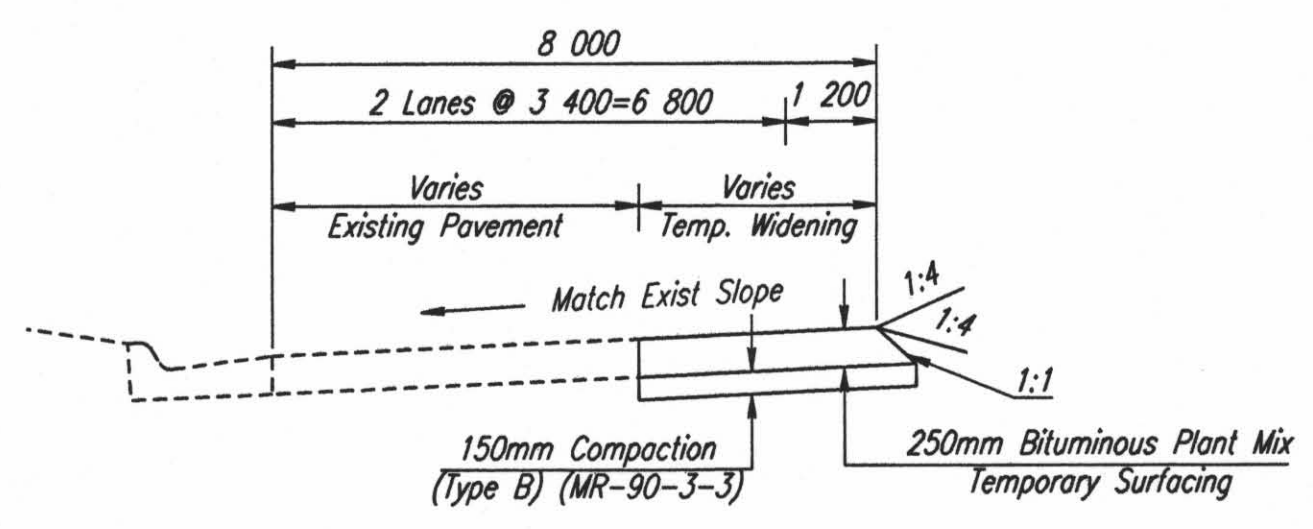
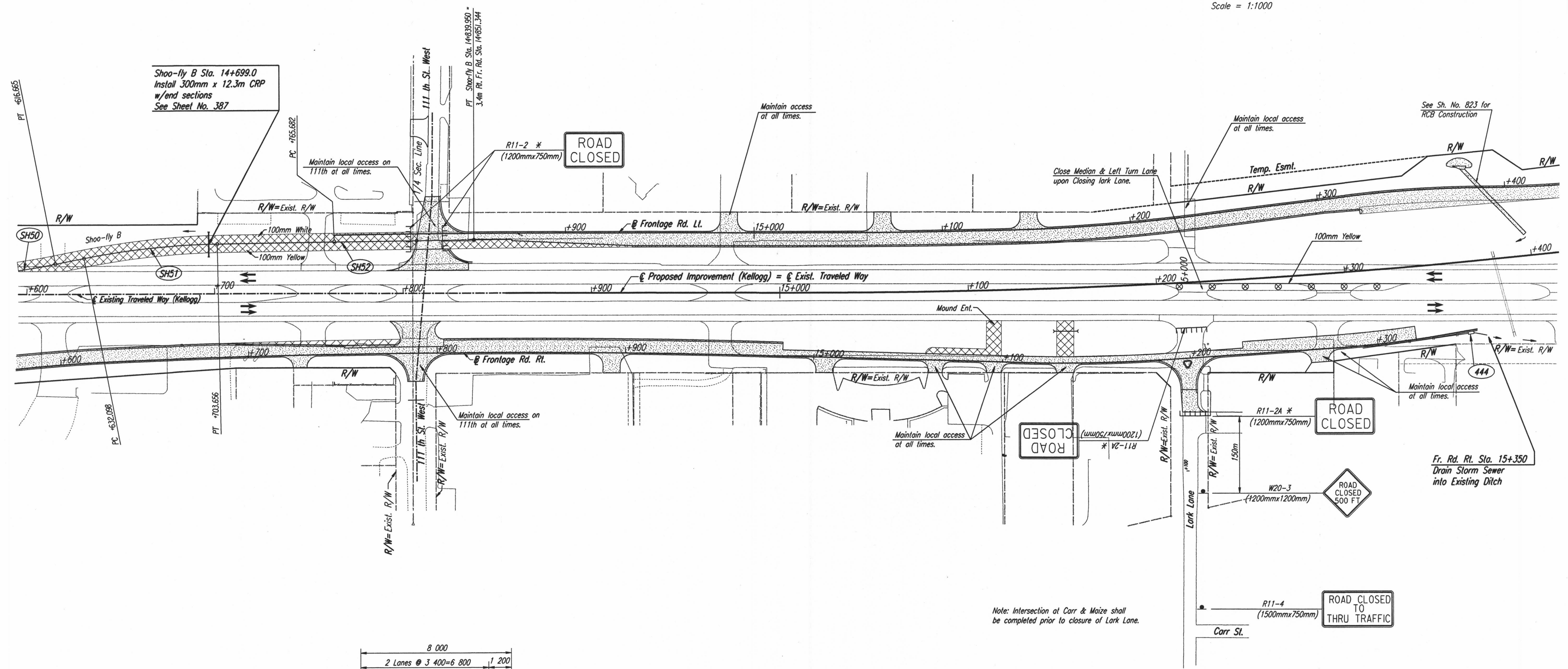


FHWA REGION NO.	STATE	PROJECT NO.	YEAR	SHEET NO.	TOTAL SHEETS
7	KANSAS	54-87 K-6657-01	2002	796	1122

DATE	
BY	
REFERENCES NOTED	
REFERENCES CHECKED	

Scale = 1:1000



TYPICAL SECTION - PAVEMENT WIDENING
 Fr. Rd. Ll. Sta. 14+836.1 to Sta. 14+935.3
 Fr. Rd. Rt. Sta. 14+684.3 to Sta. 14+780.8

Note: Intersection at Carr & Maize shall be completed prior to closure of Lark Lane.

DSNR: OPER: JGP SCALE: 1:1000
 I:/1997/97362/SEQUENCE/STAGE IA/PL146.DGN 1-09-2002 9:36:08 LAST REV: 4-15-2002 BY: drp

No.	Revisions	By	Date

CITY OF WICHITA
TRAFFIC CONTROL
STAGE IA
STA. 14+600 TO STA. 15+400
 SEDGWICK COUNTY

Professional Engineering Consultants, P.A.
 303 S. TOPEKA • WICHITA, KANSAS 67202
 316-262-2691 • FAX 316-262-3003

Designed by	RPC, RWM	Checked by	WDH
Drawn by	JGP	Date	April, 2002
		Job No.	97362