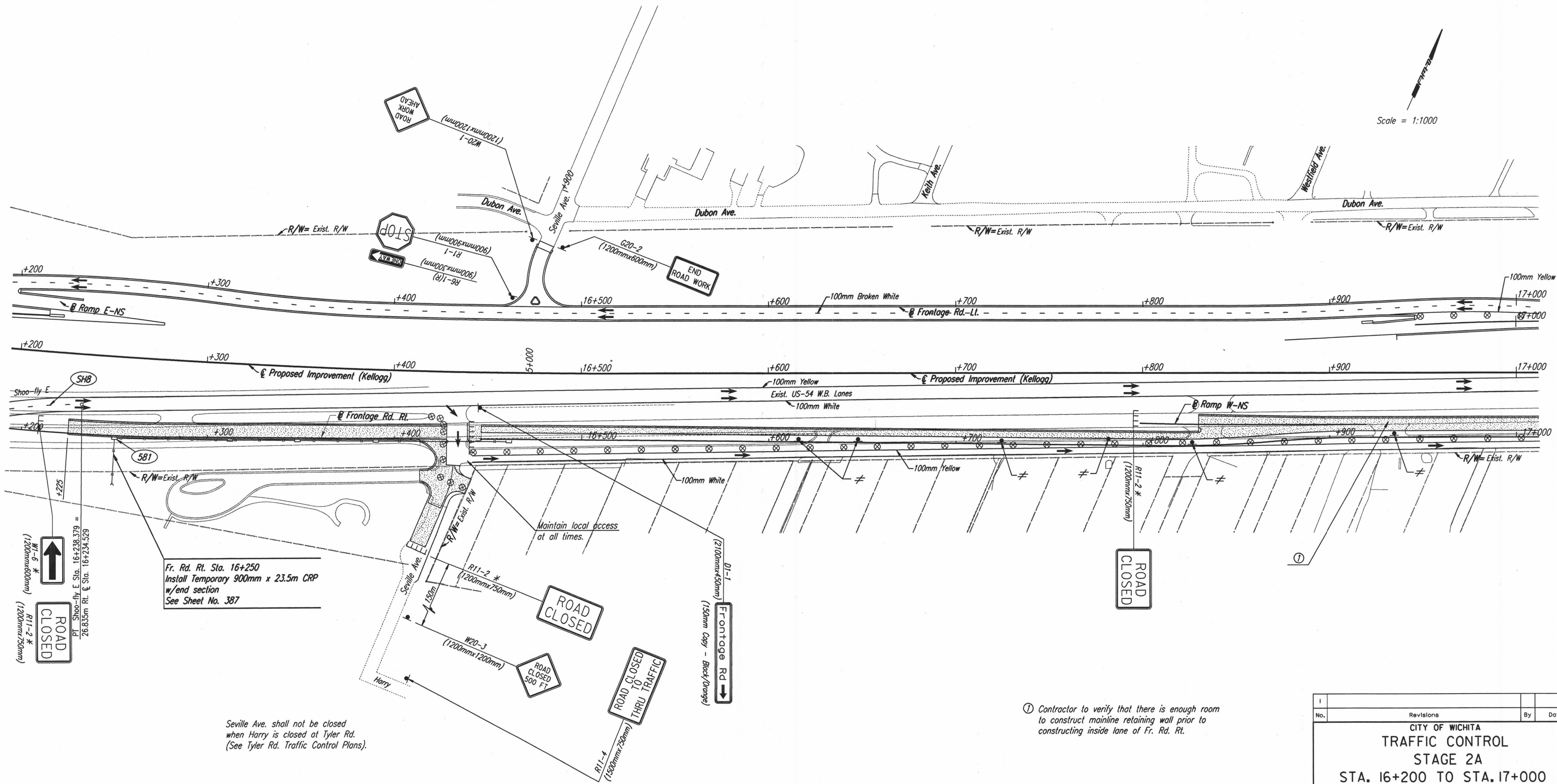


FHWA REGION NO.	STATE	PROJECT NO.	YEAR	SHEET NO.	TOTAL SHEETS
7	KANSAS	54-87 K-6657-01	2002	808	1122

DATE	BY
REFERENCES NOTED	REFERENCES CHECKED



Scale = 1:1000

DSNR: RCH OPER: JGP SCALE: 1:1000
 k:/1997/97362/SEQUENCE/STAGE 2A/PL162.DGN 1-08-2002 13:30:56 LAST REV: 4-15-2002 BY: svb

Fr. Rd. Rt. Sta. 16+250
 Install Temporary 900mm x 23.5m CRP
 w/end section
 See Sheet No. 387

Seville Ave. shall not be closed
 when Harry is closed at Tyler Rd.
 (See Tyler Rd. Traffic Control Plans).

① Contractor to verify that there is enough room
 to construct mainline retaining wall prior to
 constructing inside lane of Fr. Rd. Rt.

No.	Revisions	By	Date

CITY OF WICHITA
TRAFFIC CONTROL
STAGE 2A
STA. 16+200 TO STA. 17+000
 SEDGWICK COUNTY

Professional Engineering Consultants, P.A.
 303 S. TOPEKA • WICHITA, KANSAS 67202
 316-262-2691 • FAX 316-262-3003

Designed by	RPG, RWM	Checked by	WDH
Drawn by	JGP	Date	Apr 11, 2002 Job No. 97362