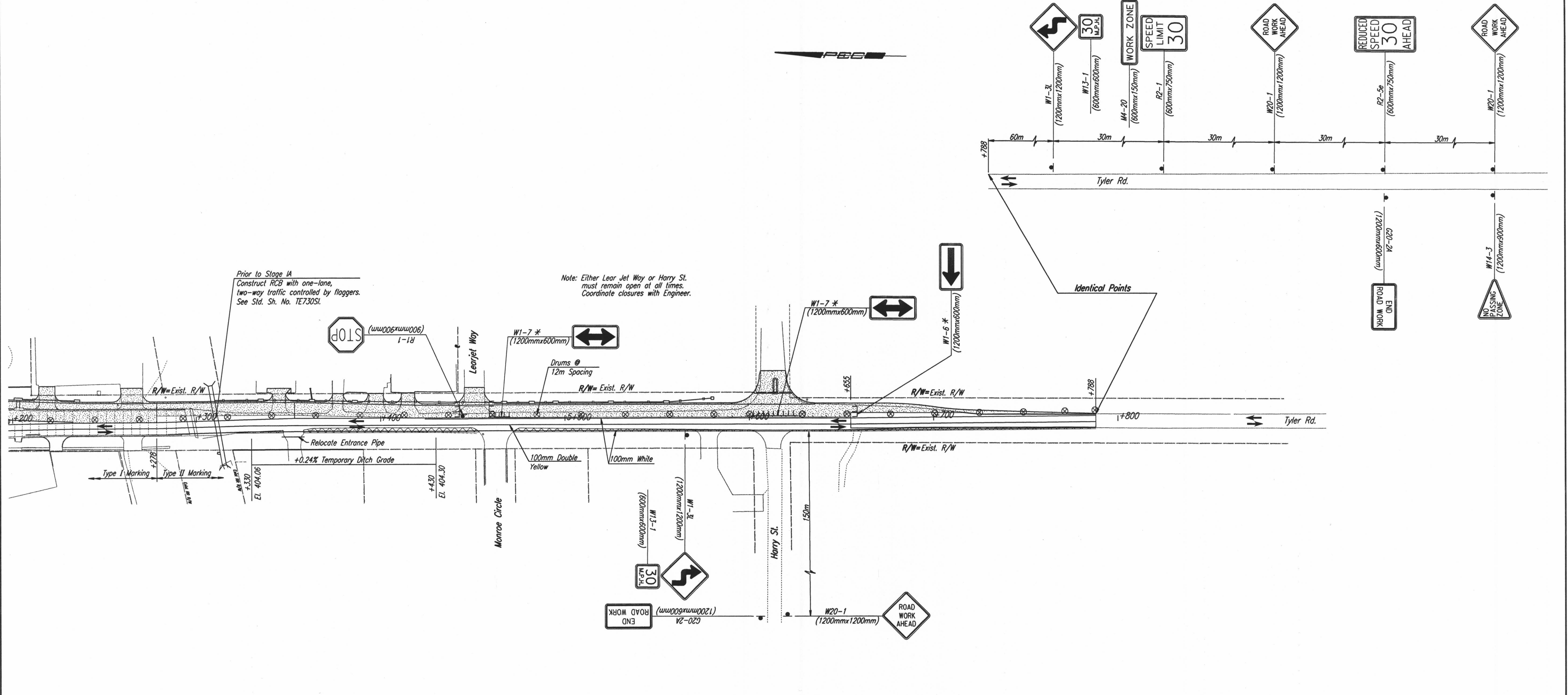


FHWA REGION NO.	STATE	PROJECT NO.	YEAR	SHEET NO.	TOTAL SHEETS
7	KANSAS	54-87 K-6657-01	2002	820	1122

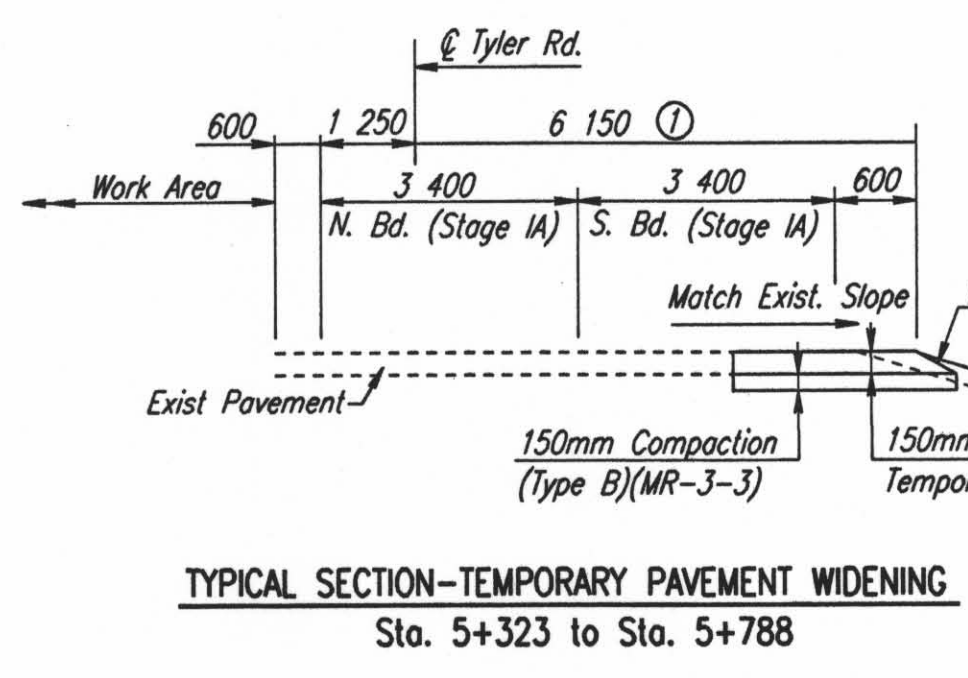
DATE	
BY	
REFERENCES NOTED	
REFERENCES CHECKED	

DSNR: OPER: JGP SCALE: 1:1000
 i:/1997/97362/SEQUENCE/STAGE IA/TYLER200.DGN 1-09-2002 9:36:08 LAST REV: 4-15-02 BY: svb



Prior to Stage IA
 Construct RCB with one-lane,
 two-way traffic controlled by flaggers.
 See Std. Sh. No. TE730SI.

Note: Either Lear Jet Way or Harry St.
 must remain open at all times.
 Coordinate closures with Engineer.



- ① Varies from 6 150 @ Sta. 5+655 to 4 500 @ Sta. 5+788.
- ② 1:4 Sta. 5+640 to Sta. 5+788

Note: All work & materials associated with
 relocating entrance pies to the temporary
 ditch shall be subsidiary.

Revisions		By	Date
CITY OF WICHITA TYLER ROAD TRAFFIC CONTROL - STAGE IA STA. 5+200 TO STA. 5+800 SEDGWICK COUNTY			
Professional Engineering Consultants, P.A. 303 S. TOPEKA • WICHITA, KANSAS 67202 316-262-2691 • FAX 316-262-3003			
Designed by	RPC, RWM	Checked by	WDH
Drawn by	JGP	Date	April, 2002 Job No. 97362