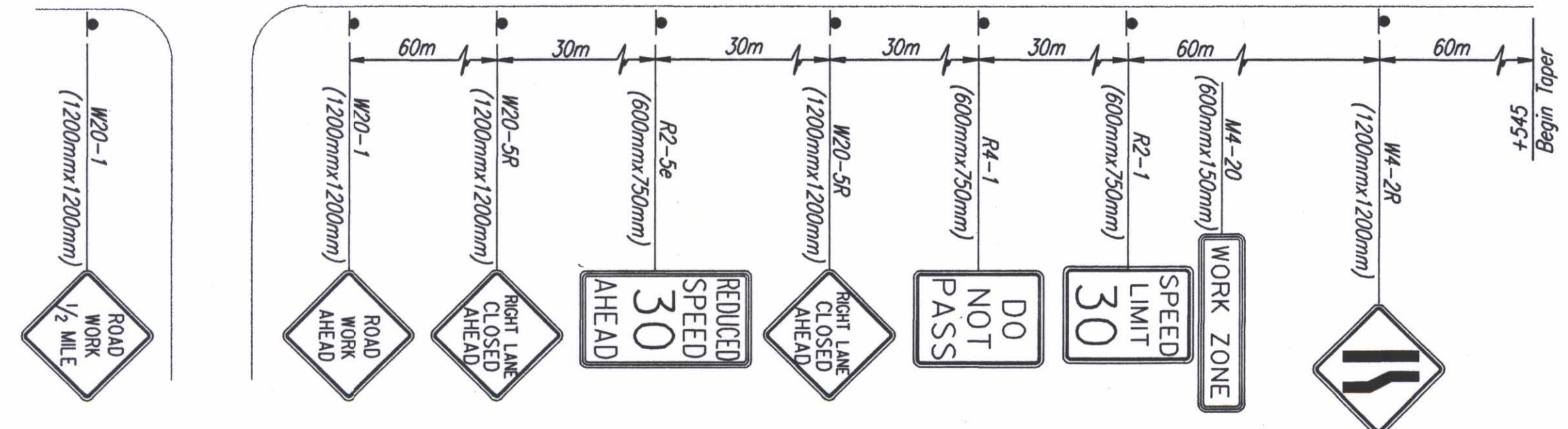
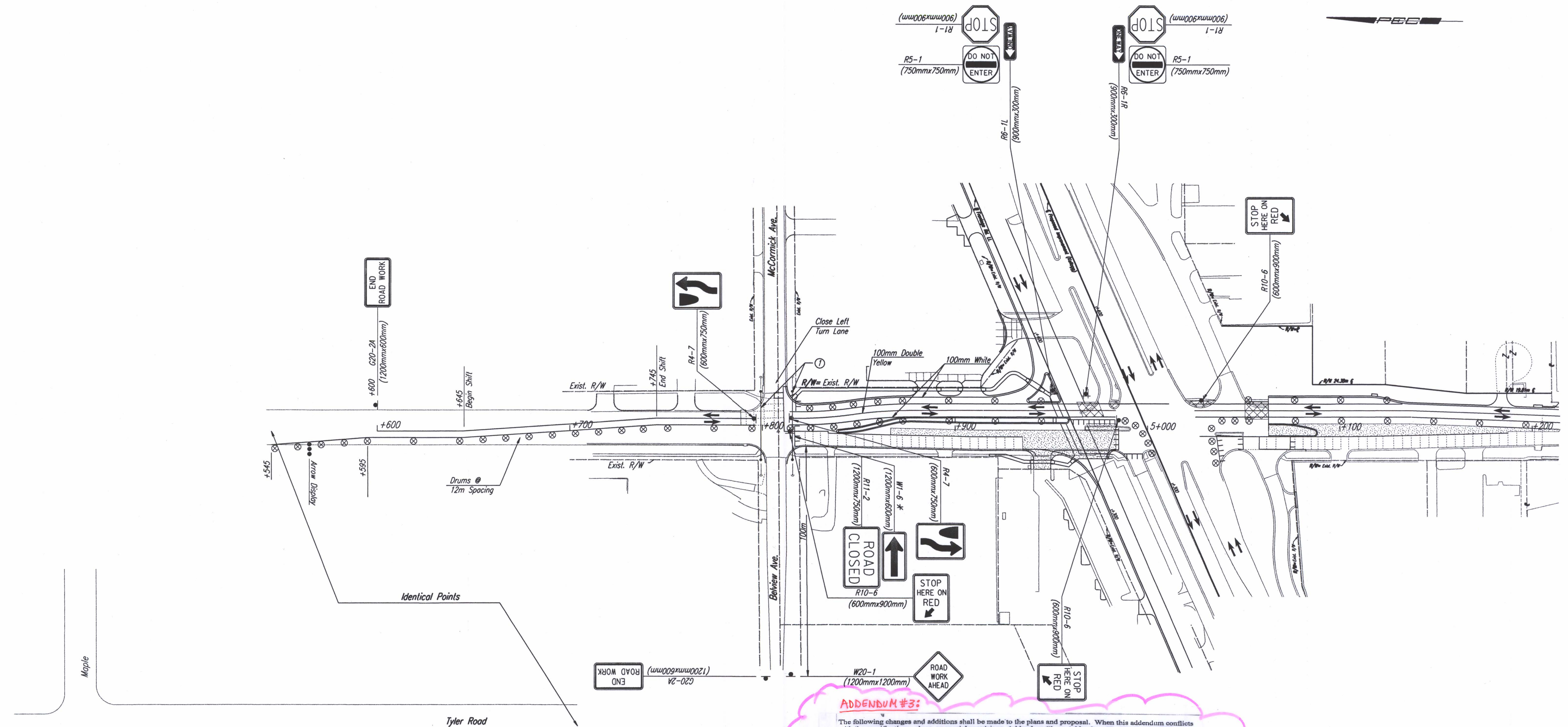


DATE	
BY	
REFERENCES NOTED	
REFERENCES CHECKED	

DSNR: OPER: JGP SCALE: 1:1000  
 I:/1997/97362/SEQUENCE/STAGE IB/TYPL4700.DGN 1-09-2002 9:36:08 LAST REV: 4-15-2002 BY: drp



**ADDENDUM #3:**  
 The following changes and additions shall be made to the plans and proposal. When this addendum conflicts with the specifications, plans, or special provisions, Addendum #1, or Addendum #2, **THIS ADDENDUM SHALL GOVERN.**

- The temporary signal work at McCormick and Tyler noted on Sheet No. 819 and 821 shall be included in the Lump Sum contract price bid for "Traffic Signal Installation (Temporary)".
  - The Signal Heads facing Tyler Road at McCormick shall be placed on span wires for each stage of traffic handling such that the appropriate Signal Head shall be in line with the appropriate lane. The Contractor shall provide the Control Wire as required for reach adjustment and shall return the Signal Heads to their Permanent position after completion of the Final Stage. The Control Wires shall be left non-spliced.
- The Controller shall operate in a Semi-Actuated mode during construction. In addition, an interconnect cable shall be extended to the temporary Signal Controller at Tyler and Kellogg. The Timing shall be set so that the Northbound Tyler has a Green Indication at McCormick while Westbound Kellogg has a Green Indication at Tyler.
- The Signal Timing must be approved by the Engineer.

Note: Construct Temporary Pavement in intersection prior to switching to Stage IB. See Sh. No. 841.

No.	Revisions	By	Date
CITY OF WICHITA <b>TYLER ROAD</b> <b>TRAFFIC CONTROL - STAGE IB</b> <b>STA. 4+600 TO STA. 5+200</b> SEDGWICK COUNTY			
<b>Professional Engineering Consultants, P.A.</b> 303 S. TOPEKA • WICHITA, KANSAS 67202 316-262-2691 • FAX 316-262-3003			
Designed by	RPC, RWM	Checked by	WDH
Drawn by	JGP	Date	April 11, 2002 Job No. 97362