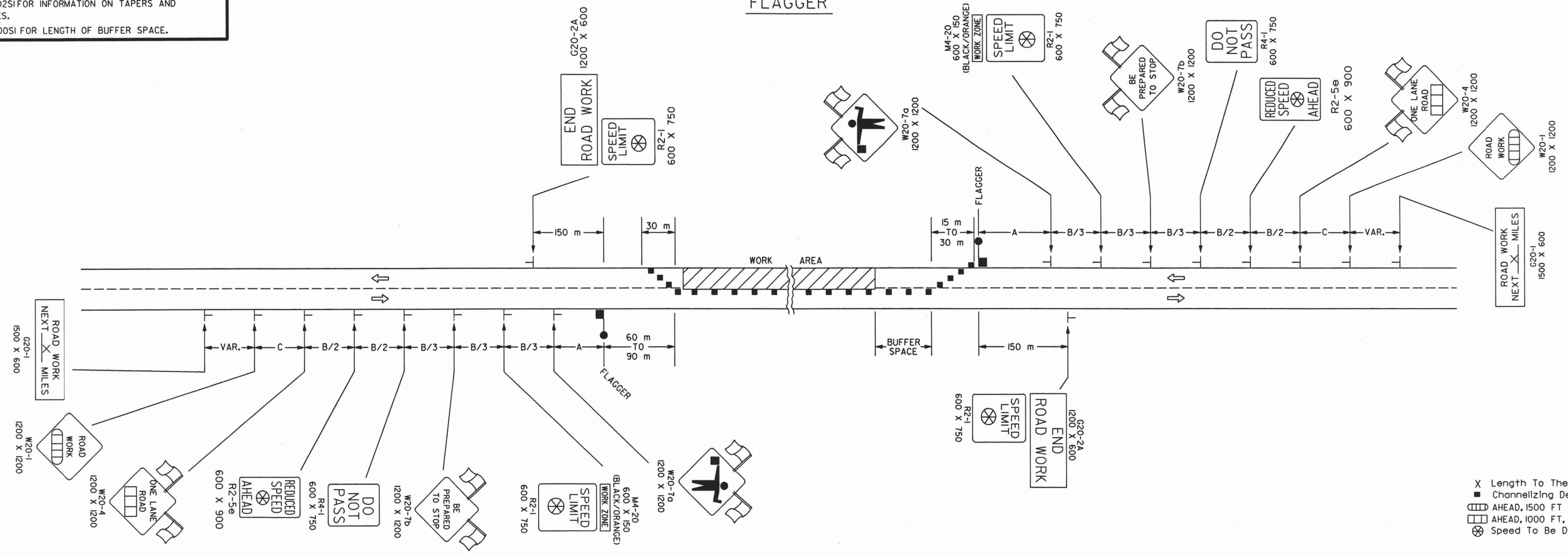


REFER TO STD. TET051 FOR ADDITIONAL INFORMATION ON TRAFFIC CONTROL SIGNS AND SIGN SPACING.  
 REFER TO STD. TET025 FOR INFORMATION ON TAPERS AND CHANNELIZING DEVICES.  
 REFER TO STD. TET0051 FOR LENGTH OF BUFFER SPACE.

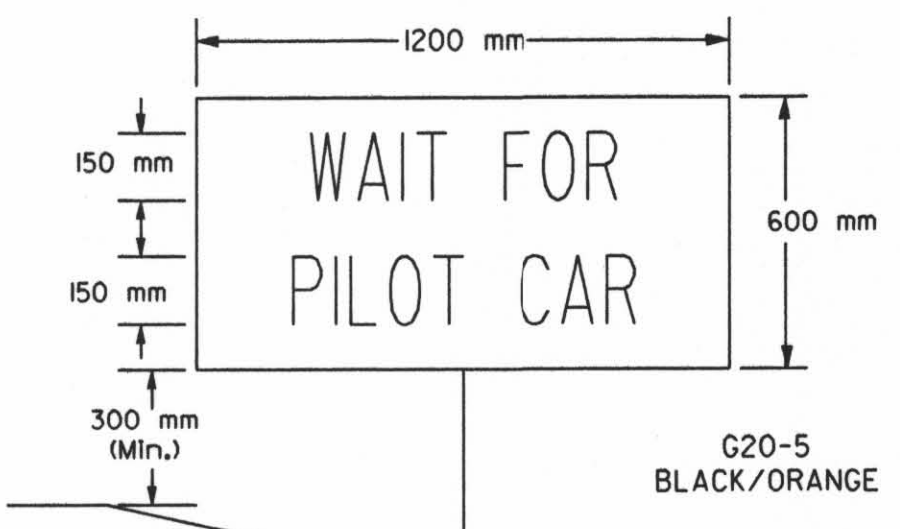
### FLAGGER



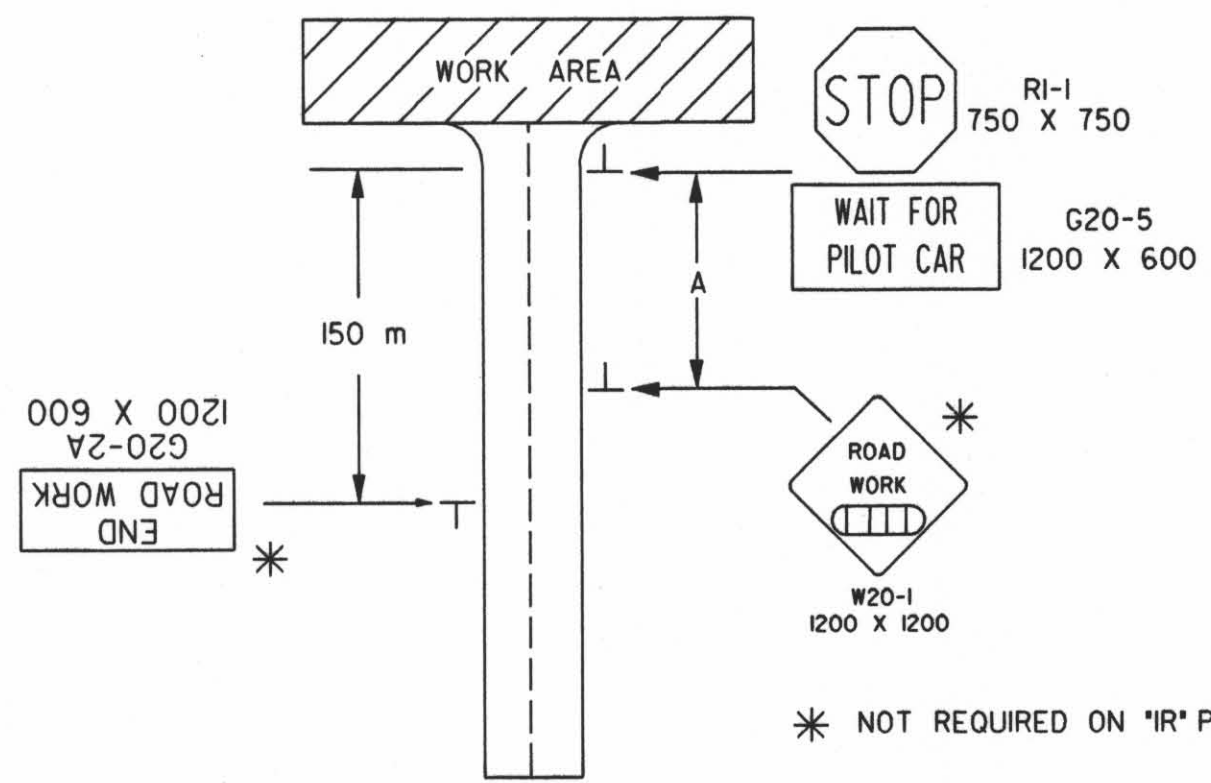
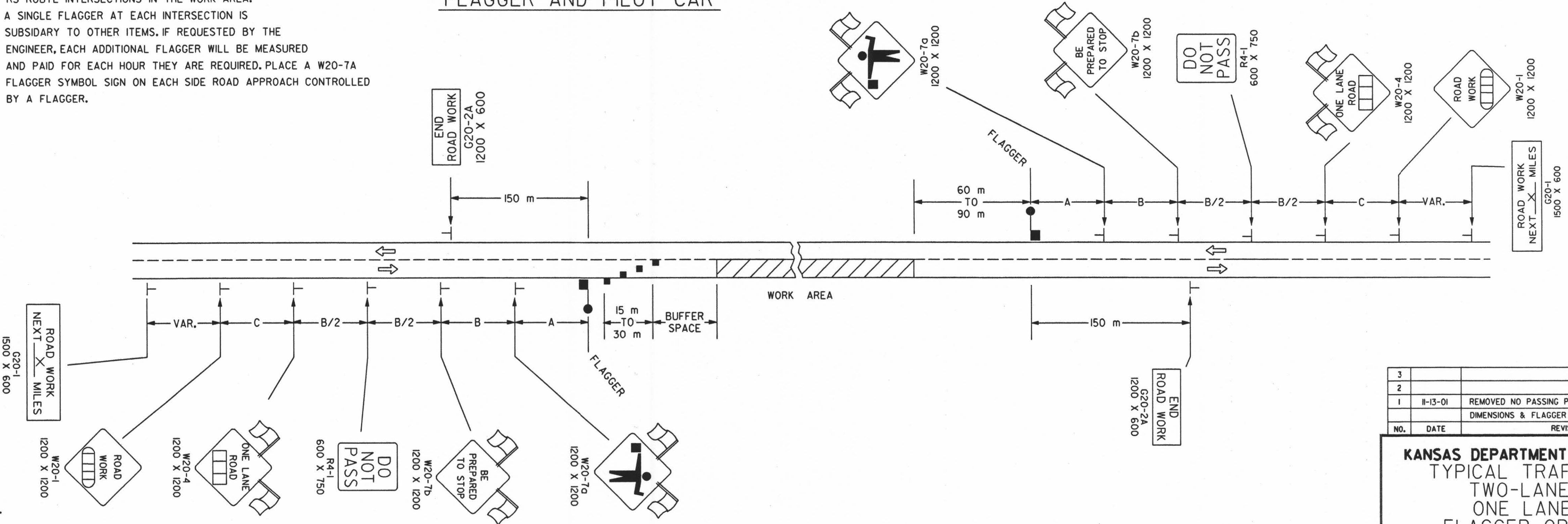
X Length To The Nearest Whole Mile  
 ■ Channelizing Device  
 AHEAD, 1500 FT OR 1 MILE  
 AHEAD, 1000 FT, 1500 FT, OR 1/2 MILE  
 Speed To Be Determined By The Engineer

### FLAGGER AND PILOT CAR

NOTE: PLACE A FLAGGER AT ALL HIGHWAYS AND RS ROUTE INTERSECTIONS IN THE WORK AREA. A SINGLE FLAGGER AT EACH INTERSECTION IS SUBSIDIARY TO OTHER ITEMS. IF REQUESTED BY THE ENGINEER, EACH ADDITIONAL FLAGGER WILL BE MEASURED AND PAID FOR EACH HOUR THEY ARE REQUIRED. PLACE A W20-7A FLAGGER SYMBOL SIGN ON EACH SIDE ROAD APPROACH CONTROLLED BY A FLAGGER.



SIGN SHALL BE PLACED IMMEDIATELY IN FRONT OF THE EXISTING STOP SIGN, A MINIMUM OF 150 mm BELOW THE BOTTOM OF THE STOP SIGN. THE SIGN SHOULD BE REMOVED OR COVERED WHEN THERE IS NO PILOT CAR.



\* NOT REQUIRED ON 'IR' PROJECTS.

3				
2				
1	11-13-01	REMOVED NO PASSING PENNANTS, CLARIFIED DIMENSIONS & FLAGGER NOTES.	JH	S.A.B
NO.	DATE	REVISION	BY	APP'D

**KANSAS DEPARTMENT OF TRANSPORTATION**  
 TYPICAL TRAFFIC CONTROL  
 TWO-LANE HIGHWAY  
 ONE LANE CLOSED  
 FLAGGER OR PILOT CAR  
 TE730SI 9/1/00

FHWA APPROVAL	II-21-01	APP'D	Michael P. McKenna
DESIGNED	L.E.R.	DETAILED	B.A.H.
QUANTITIES	TRACED	DESIGN CK.	DETAIL CK.
QUAN. CK.	TRACE CK.		

DSNR: OPER: JGP SCALE: 1:1997/97362/SEQUENCE/STANDARDS/TE730SI.DGN 1-30-2002 10:39:19 LAST REV: 3-29-2002 BY: svb