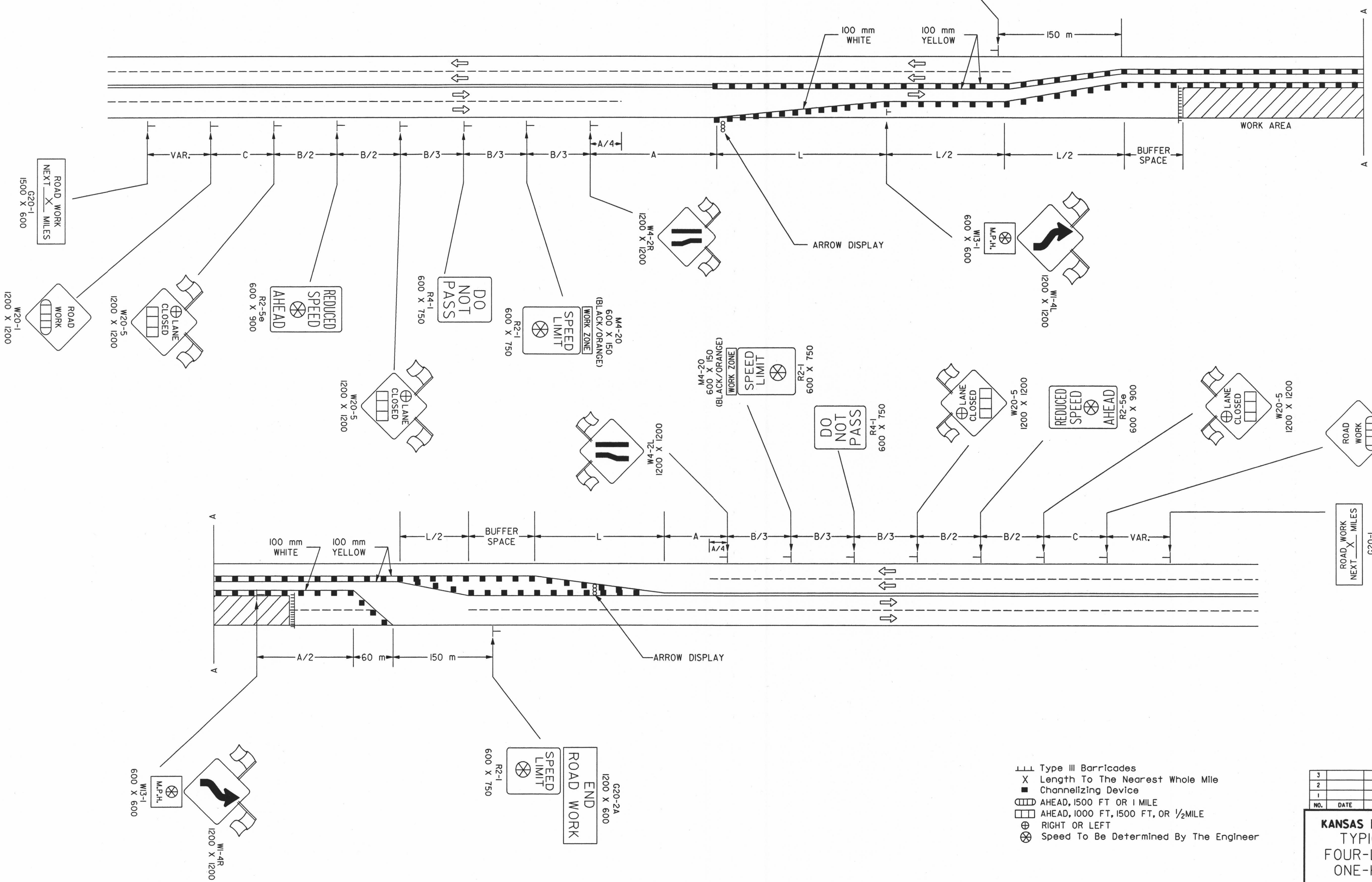


REFER TO STD. TE710SI FOR ADDITIONAL INFORMATION ON TRAFFIC CONTROL SIGNS AND SIGN SPACING.
 REFER TO STD. TE702SI FOR INFORMATION ON TAPERS AND CHANNELIZING DEVICES.
 REFER TO STD. TE700SI FOR LENGTH OF BUFFER SPACE.



- LLL Type III Barricades
- X Length To The Nearest Whole Mile
- Channelizing Device
- ⊞ AHEAD, 1500 FT OR 1 MILE
- ⊞ AHEAD, 1000 FT, 1500 FT, OR 1/2 MILE
- ⊞ RIGHT OR LEFT
- ⊗ Speed To Be Determined By The Engineer

DSNR: OPER: JGP SCALE: 1:1997/97362/SEQUENCE/STANDARDS/TE748SI.DGN 1-30-2002 10:39:19 LAST REV: 3-29-2002 BY: svb

NO.	DATE	REVISION	BY	APP'D
3				
2				
1				

KANSAS DEPARTMENT OF TRANSPORTATION
 TYPICAL TRAFFIC CONTROL
 FOUR-LANE UNDIVIDED HIGHWAY
 ONE-HALF ROADWAY CLOSED

TE748SI 9/1/00

DESIGNED	L.E.R.	9-1-00	APP'D	Michael P. McKenna
DETAILED	B.A.H.	QUANTITIES	TRACED	
DESIGN CK.	DETAIL CK.	QUAN. CK.	TRACE CK.	