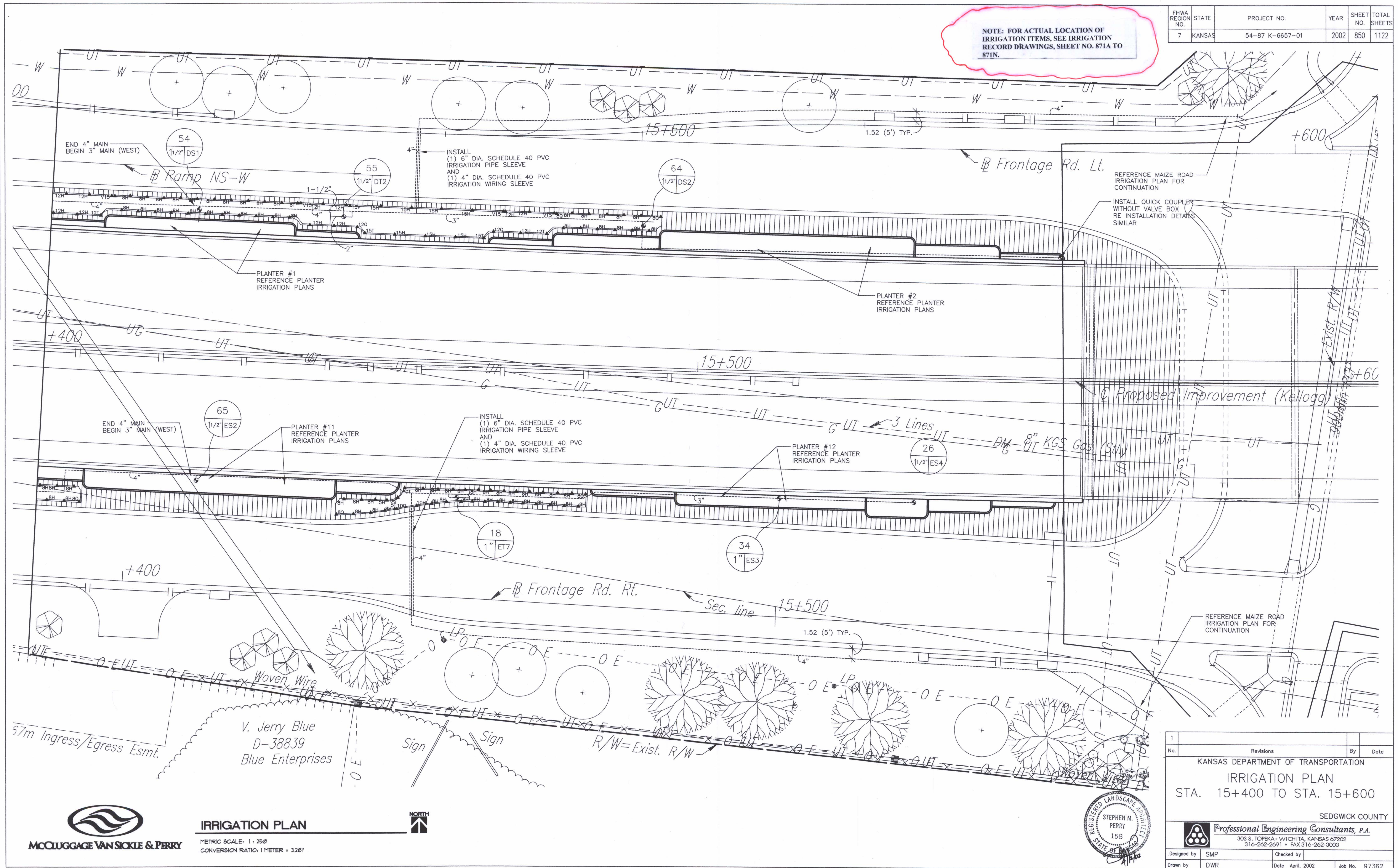


FHWA REGION NO.	STATE	PROJECT NO.	YEAR	SHEET NO.	TOTAL SHEETS
7	KANSAS	54-87 K-6657-01	2002	850	1122

NOTE: FOR ACTUAL LOCATION OF IRRIGATION ITEMS, SEE IRRIGATION RECORD DRAWINGS, SHEET NO. 871A TO 871N.

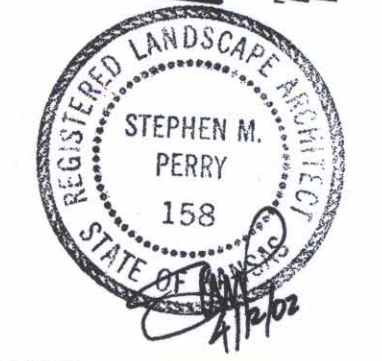
DATE	
BY	
REFERENCES NOTED	
REFERENCES CHECKED	



DSNR: OPER: DWR SCALE: 1:500 F: 9934/IS154



IRRIGATION PLAN
 METRIC SCALE: 1 : 250
 CONVERSION RATIO: 1 METER = 3.28'



1			
No.	Revisions	By	Date
KANSAS DEPARTMENT OF TRANSPORTATION			
IRRIGATION PLAN			
STA. 15+400 TO STA. 15+600			
SEDGWICK COUNTY			
Professional Engineering Consultants, P.A. <small>303 S. TOPEKA • WICHITA, KANSAS 67202 316-262-2691 • FAX 316-262-3003</small>			
Designed by	SMP	Checked by	
Drawn by	DWR	Date	April, 2002
		Job No.	97362