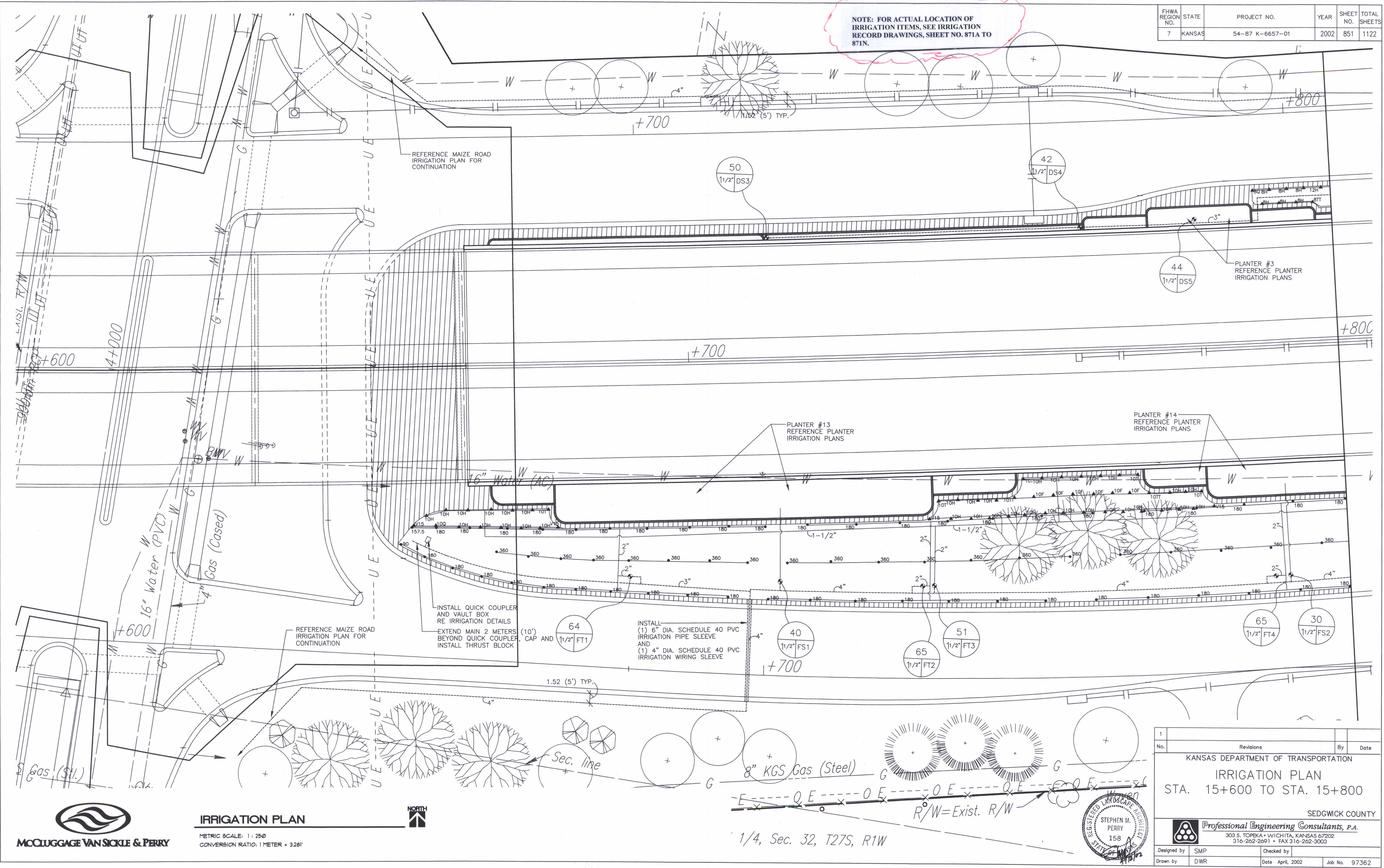


FHWA REGION NO.	STATE	PROJECT NO.	YEAR	SHEET NO.	TOTAL SHEETS
7	KANSAS	54-87 K-6657-01	2002	851	1122

NOTE: FOR ACTUAL LOCATION OF IRRIGATION ITEMS, SEE IRRIGATION RECORD DRAWINGS, SHEET NO. 871A TO 871N.

DATE	
BY	
REFERENCES NOTED	
REFERENCES CHECKED	

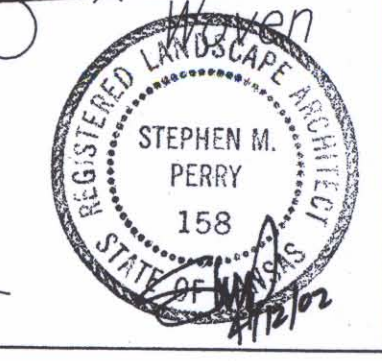


DSNR: F/9934/S154
 OPER: DWR
 SCALE: 1:500



IRRIGATION PLAN

METRIC SCALE: 1:250
 CONVERSION RATIO: 1 METER = 3281'



1			
No.	Revisions	By	Date
KANSAS DEPARTMENT OF TRANSPORTATION IRRIGATION PLAN STA. 15+600 TO STA. 15+800 SEDGWICK COUNTY			
Professional Engineering Consultants, P.A. 303 S. TOPEKA • WICHITA, KANSAS 67202 316-262-2691 • FAX 316-262-3003			
Designed by	SMP	Checked by	
Drawn by	DWR	Date	April, 2002
		Job No.	97362

1/4, Sec. 32, T27S, R1W