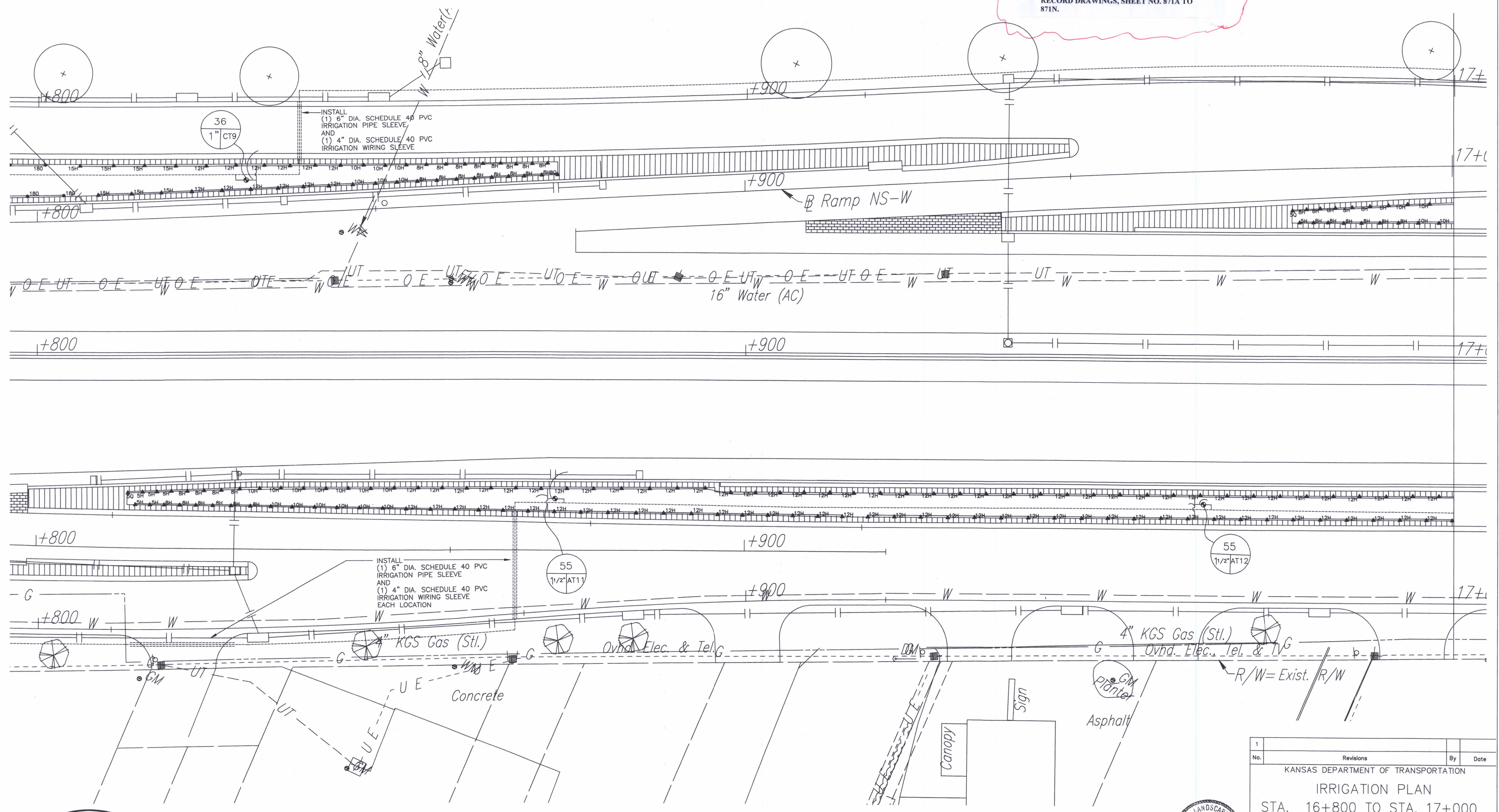


FHWA REGION NO.	STATE	PROJECT NO.	YEAR	SHEET NO.	TOTAL SHEETS
7	KANSAS	54-87 K-6657-01	2002	857	1122

NOTE: FOR ACTUAL LOCATION OF IRRIGATION ITEMS, SEE IRRIGATION RECORD DRAWINGS, SHEET NO. 871A TO 871N.

DATE	
BY	
REFERENCES NOTED	
REFERENCES CHECKED	

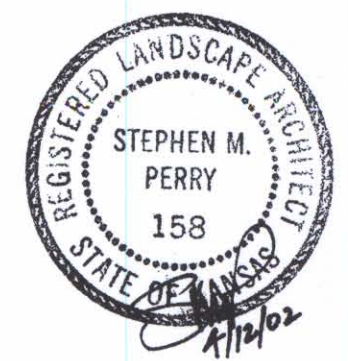


DSNR: OPER: DWR SCALE: 1:500 F: 9934/IS166



IRRIGATION PLAN

METRIC SCALE: 1:250
CONVERSION RATIO: 1 METER = 3281'



No.	Revisions	By	Date
1			

KANSAS DEPARTMENT OF TRANSPORTATION

IRRIGATION PLAN
STA. 16+800 TO STA. 17+000

SEDGWICK COUNTY

Professional Engineering Consultants, P.A.
303 S. TOPEKA • WICHITA, KANSAS 67202
316-262-2691 • FAX 316-262-3003

Designed by	SMP	Checked by	
Drawn by	DWR	Date	April, 2002
		Job No.	97362