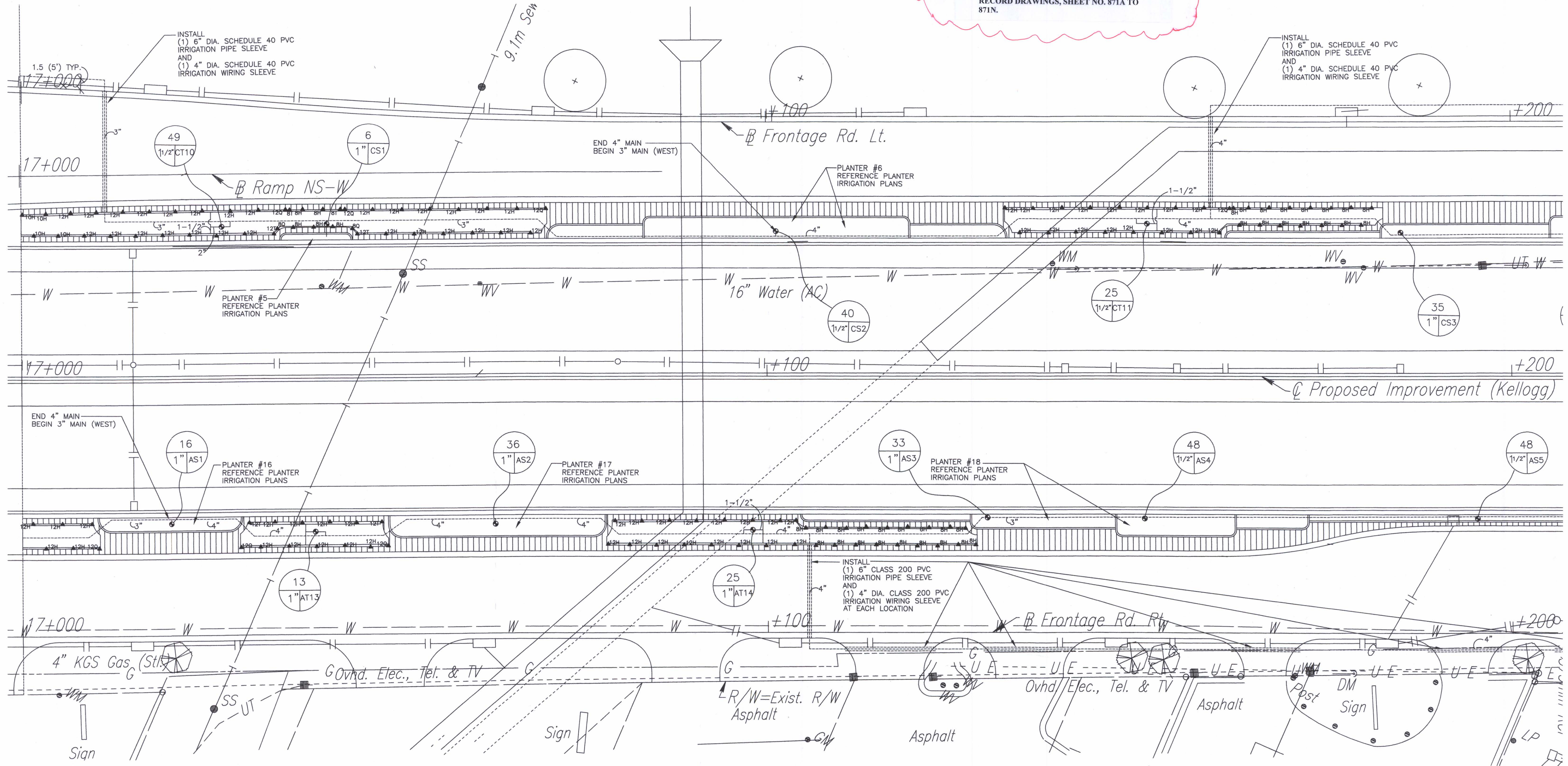


FHWA REGION NO.	STATE	PROJECT NO.	YEAR	SHEET NO.	TOTAL SHEETS
7	KANSAS	54-87 K-6657	2002	858	1122

NOTE: FOR ACTUAL LOCATION OF IRRIGATION ITEMS, SEE IRRIGATION RECORD DRAWINGS, SHEET NO. 871A TO 871N.

DATE	
BY	
REFERENCES NOTED	
REFERENCES CHECKED	

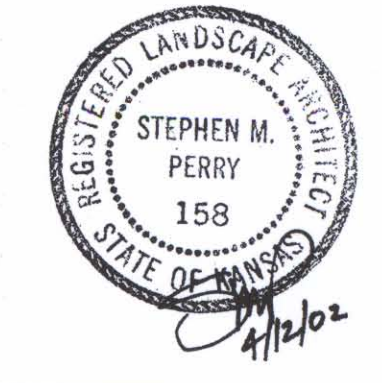


DSNR: F/9934/170
 OPER: DWR
 SCALE: 1:50



IRRIGATION PLAN

METRIC SCALE: 1:250
 CONVERSION RATIO: 1 METER = 3.281'



1	No.	Revisions	By	Date
KANSAS DEPARTMENT OF TRANSPORTATION				
IRRIGATION PLAN STA. 17+000 TO STA. 17+200				
SEDGWICK COUNTY				
Professional Engineering Consultants, P.A. 303 S. TOPEKA • WICHITA, KANSAS 67202 316-262-2691 • FAX 316-262-3003				
Designed by	SMP	Checked by		
Drawn by	DWR	Date	April, 2002	Job No. 97362