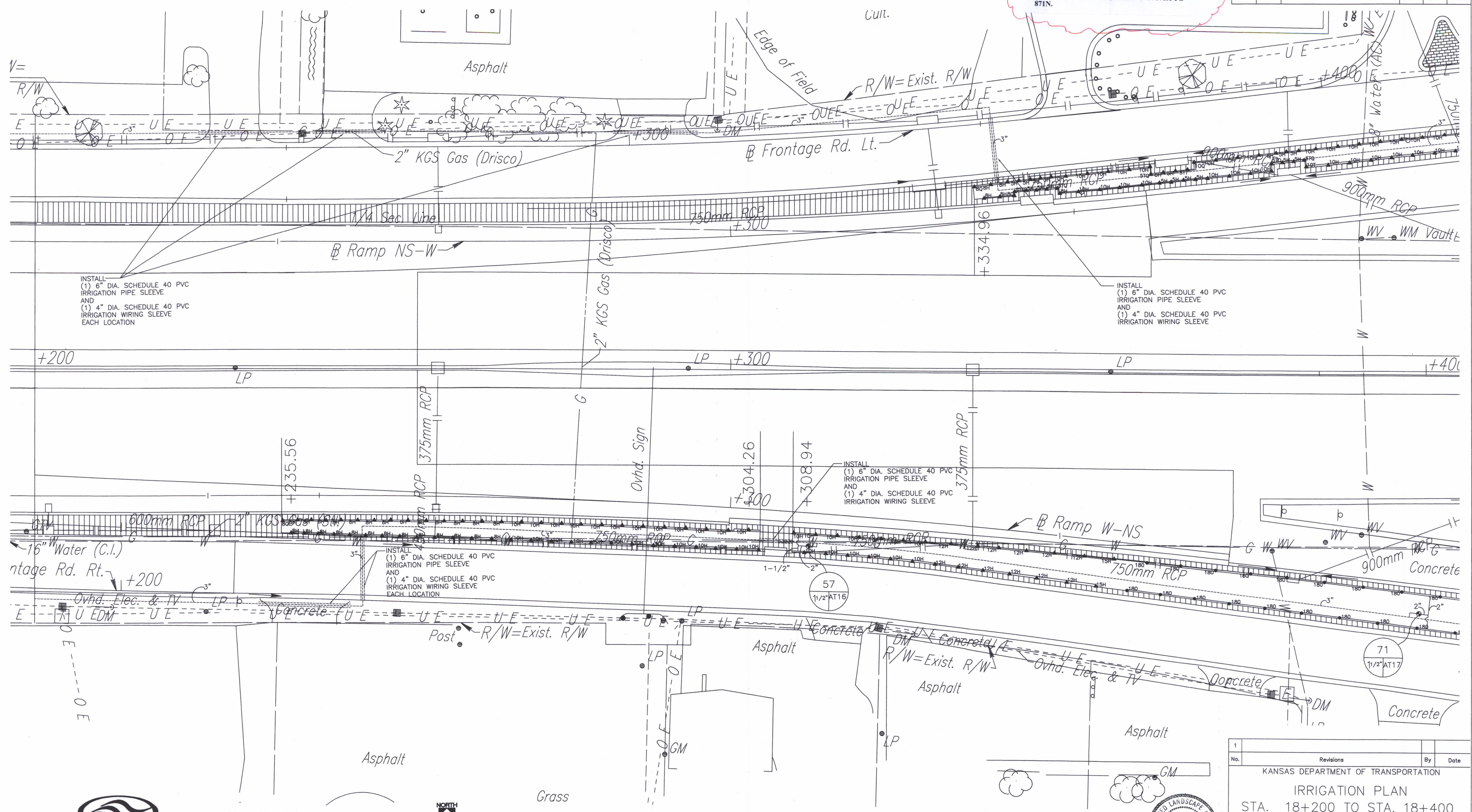


FHWA REGION NO.	STATE	PROJECT NO.	YEAR	SHEET NO.	TOTAL SHEETS
7	KANSAS	54-87 K-6657-01	2002	864	1122

NOTE: FOR ACTUAL LOCATION OF IRRIGATION ITEMS, SEE IRRIGATION RECORD DRAWINGS, SHEET NO. 871A TO 871N.

DATE	
BY	
REFERENCES NOTED	
REFERENCES CHECKED	



INSTALL
 (1) 6" DIA. SCHEDULE 40 PVC
 IRRIGATION PIPE SLEEVE
 AND
 (1) 4" DIA. SCHEDULE 40 PVC
 IRRIGATION WIRING SLEEVE
 EACH LOCATION

INSTALL
 (1) 6" DIA. SCHEDULE 40 PVC
 IRRIGATION PIPE SLEEVE
 AND
 (1) 4" DIA. SCHEDULE 40 PVC
 IRRIGATION WIRING SLEEVE
 EACH LOCATION

INSTALL
 (1) 6" DIA. SCHEDULE 40 PVC
 IRRIGATION PIPE SLEEVE
 AND
 (1) 4" DIA. SCHEDULE 40 PVC
 IRRIGATION WIRING SLEEVE
 EACH LOCATION

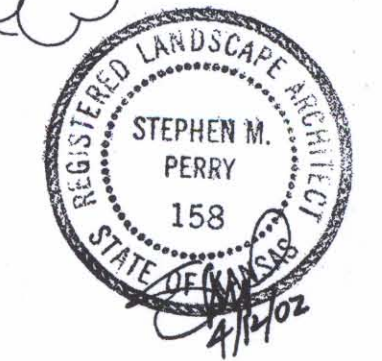
INSTALL
 (1) 6" DIA. SCHEDULE 40 PVC
 IRRIGATION PIPE SLEEVE
 AND
 (1) 4" DIA. SCHEDULE 40 PVC
 IRRIGATION WIRING SLEEVE
 EACH LOCATION

DSNR: F/9934/15182
 OPER: DWR
 SCALE: 1:500



IRRIGATION PLAN

METRIC SCALE: 1:250
 CONVERSION RATIO: 1 METER = 3.281'



1	Revisions	By	Date
KANSAS DEPARTMENT OF TRANSPORTATION			
IRRIGATION PLAN			
STA. 18+200 TO STA. 18+400			
SEDGWICK COUNTY			
Professional Engineering Consultants, P.A.			
303 S. TOPKA • WICHITA, KANSAS 67202			
316-262-2691 • FAX 316-262-3003			
Designed by	SMP	Checked by	
Drawn by	DWR	Date	April, 2002
		Job No.	97362