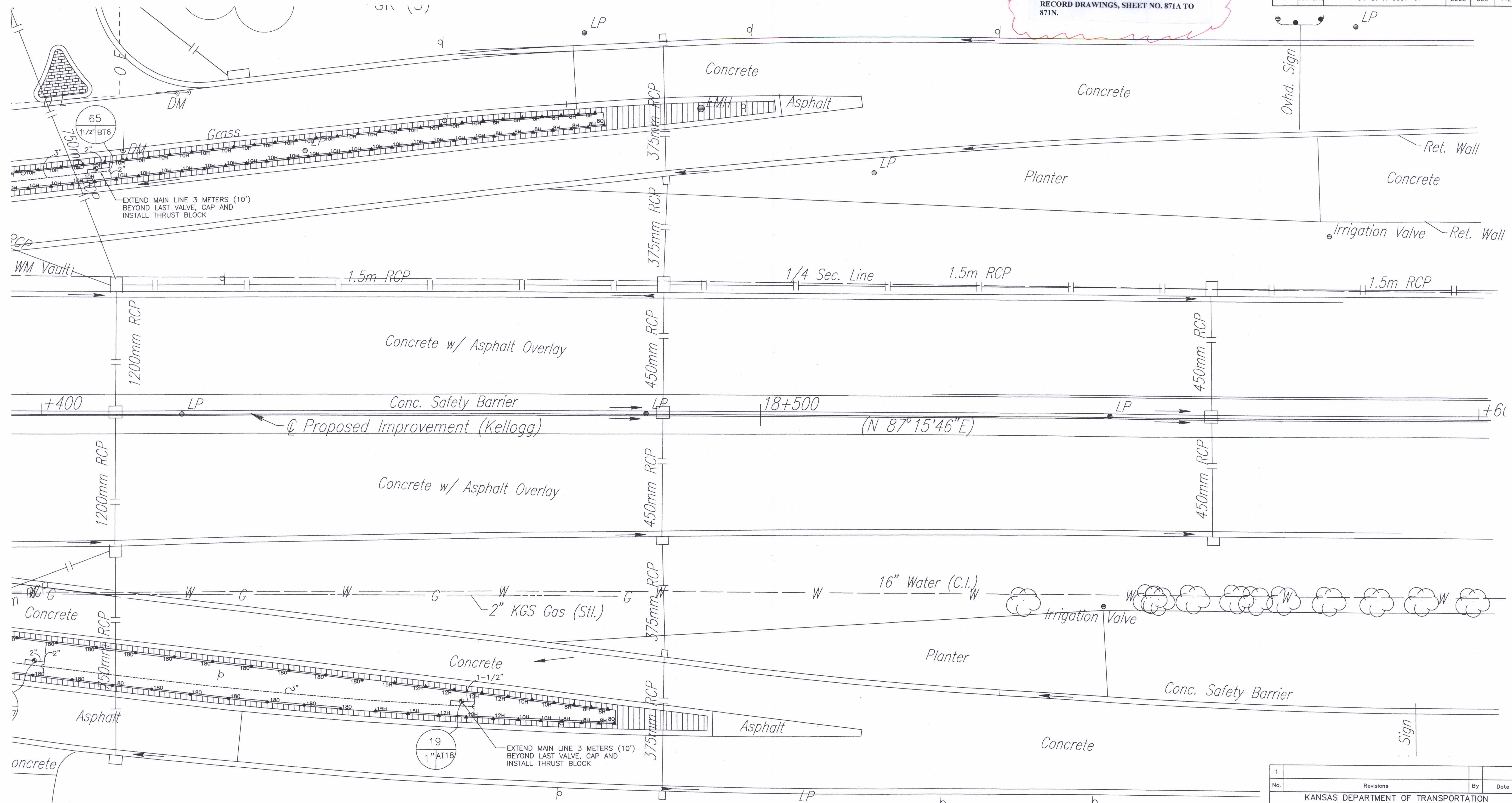


| | | | | | |
|-----------------|--------|-----------------|------|-----------|--------------|
| FHWA REGION NO. | STATE | PROJECT NO. | YEAR | SHEET NO. | TOTAL SHEETS |
| 7 | KANSAS | 54-87 K-6657-01 | 2002 | 865 | 1122 |

NOTE: FOR ACTUAL LOCATION OF IRRIGATION ITEMS, SEE IRRIGATION RECORD DRAWINGS, SHEET NO. 871A TO 871N.

| | |
|--------------------|--|
| DATE | |
| BY | |
| REFERENCES NOTED | |
| REFERENCES CHECKED | |



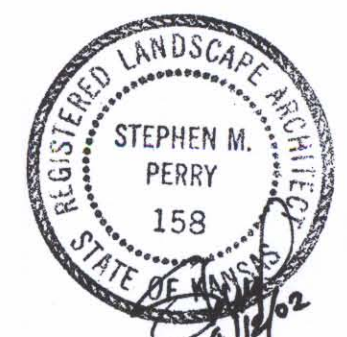
DSNR: OPER: DWR SCALE: 1:500
F: 9934/S182



IRRIGATION PLAN



SE 1/4, Sec.28, T27S, R1W



| | | | | | |
|--|-----|------------|-------------|---------|-------|
| 1 | | Revisions | | By | Date |
| KANSAS DEPARTMENT OF TRANSPORTATION | | | | | |
| IRRIGATION PLAN | | | | | |
| STA. 18+400 TO STA. 18+600 | | | | | |
| SEDGWICK COUNTY | | | | | |
| Professional Engineering Consultants, P.A. | | | | | |
| 303 S. TOPEKA • WICHITA, KANSAS 67202 316-262-2691 • FAX 316-262-3003 | | | | | |
| Designed by | SMP | Checked by | | | |
| Drawn by | DWR | Date | April, 2002 | Job No. | 97362 |