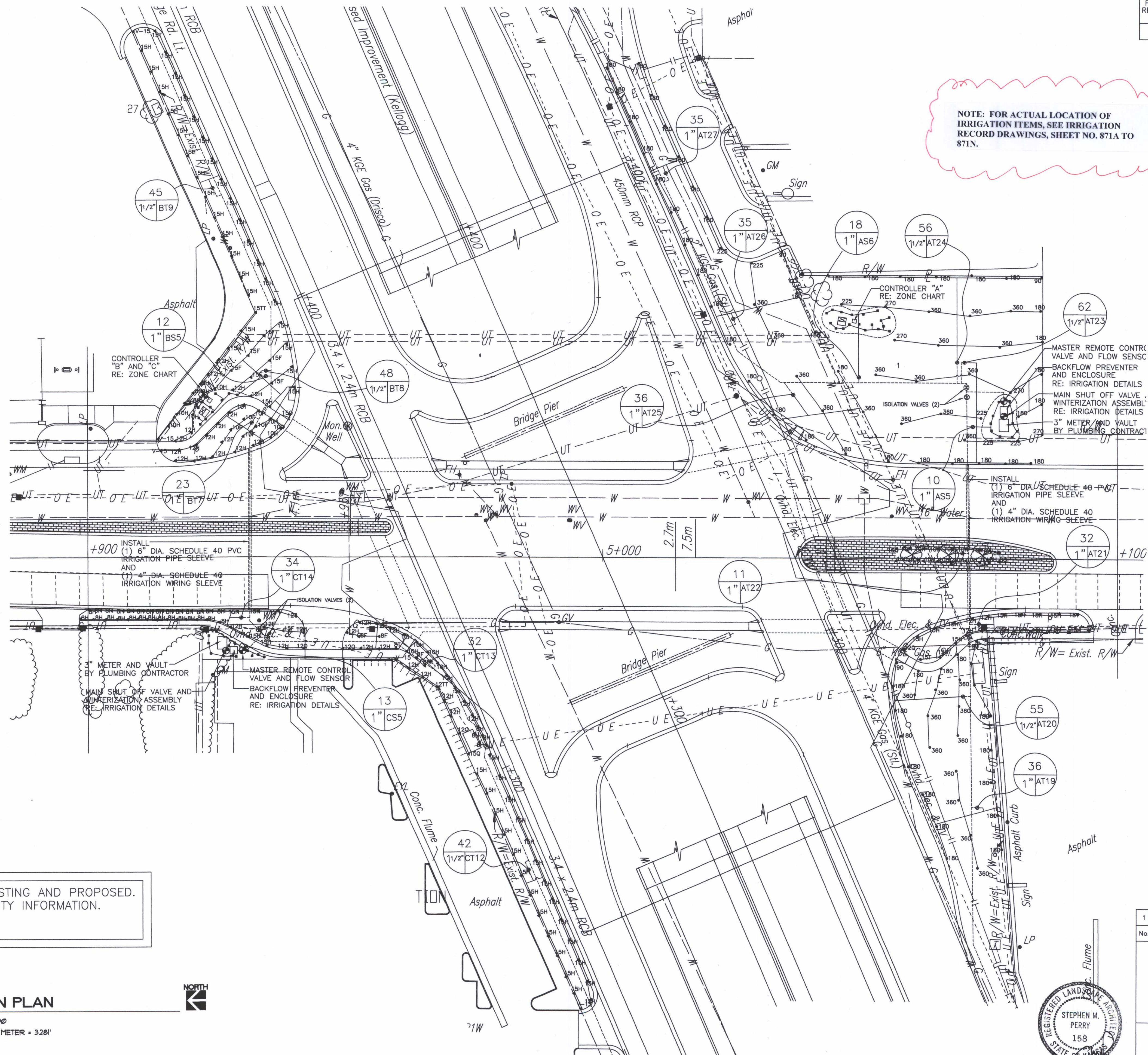


FHWA REGION NO.	STATE	PROJECT NO.	YEAR	SHEET NO.	TOTAL SHEETS
7	KANSAS	54-87 K-6657-01	2002	867	1122

DATE	
BY	
REFERENCES NOTED	
REFERENCES CHECKED	

NOTE: FOR ACTUAL LOCATION OF IRRIGATION ITEMS, SEE IRRIGATION RECORD DRAWINGS, SHEET NO. 871A TO 871N.

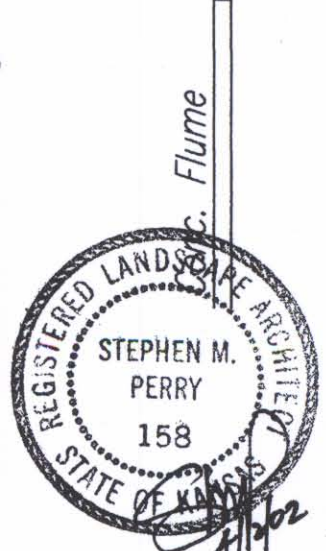


NOTE: UTILITIES INDICATED CONSIST OF EXISTING AND PROPOSED. CONTRACTOR SHALL FIELD VERIFY ALL UTILITY INFORMATION. COORDINATE THROUGH KANSAS ONE CALL.

DSMR: F/9934/1S182  
 OPER: DWR  
 SCALE: 1:500



**IRRIGATION PLAN**  
 METRIC SCALE: 1:400  
 CONVERSION RATIO: 1 METER = 328'



1			
No.	Revisions	By	Date
KANSAS DEPARTMENT OF TRANSPORTATION			
<b>IRRIGATION PLAN TYLER ROAD</b>			
SEDGWICK COUNTY			
Professional Engineering Consultants, P.A. 303 S. TOPEKA • WICHITA, KANSAS 67202 316-262-2691 • FAX 316-262-3003			
Designed by	SMP	Checked by	
Drawn by	DWR	Date	April, 2002
		Job No.	97362