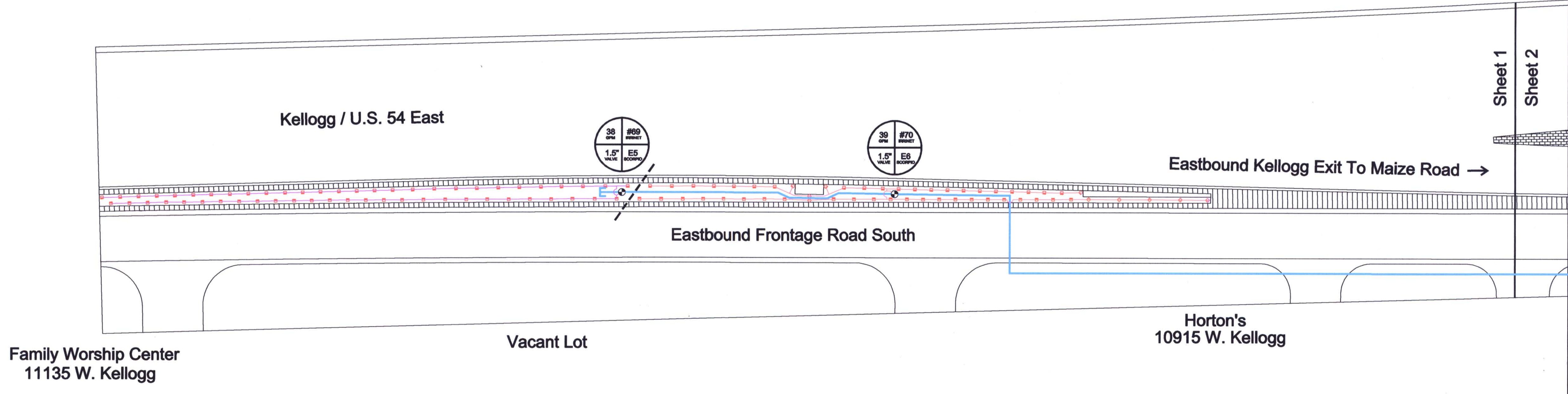


FHWA REGION NO.	STATE	PROJECT NO.	YEAR	SHEET NO.	TOTAL SHEETS
7	KANSAS	54-87 K-6657-01	2002	871A	1122

Symbol	Irrigation Equipment
◆◆◆	Toro 570Z 4" Pop-Up Series Spray Heads (1,595 Total)
◆◆◆	Toro 340 Series Rotors (489 Total)
◆◆◆	Toro 1" P-220 Electric Valves (24 Total)
◆◆◆	Toro 1-1/2" P-220 Electric Valves (59 Total)
◆◆◆	Toro 2" P-220 Electric Valves (1 Total)
◆◆◆	Toro 075-SLSC 473 Quick Couplers (4 Total)
—	PVC Laterals (Colors & Sizes Vary Per Zone)
—	PVC Main Line (Sizes Vary) & 10, 12 & 14 Gauge Wire
A	Toro Irrinet Controller - A (1 Total)
B	Toro Scorpio Controllers - B, C, D, E & F (5 Total)
◆	Hunter Mini Clik Rain Sensor - Attached To "A" Irrinet Controller (1 Total)
⌵	Febco 3" RPZ Backflow Prevention Devices & Enclosures (4 Total)
⊗	Point of Connection - 3" Water Meters (4 Total)
S	4" Service Valves (4 Total)
⊕	Blowout Ports (4 Total)
F	Arad 3" Flow Sensor / Master Valve (4 Total)
⌵	4" Brass Gate Valves (8 Total)

Note: All Turf Zone Labels Are Black, All Shrub Zone Labels Are Red



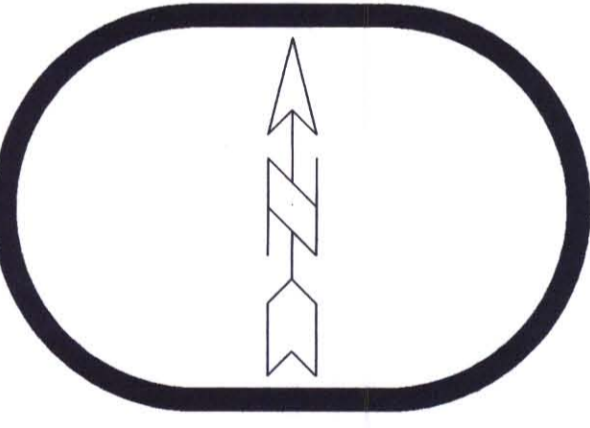
NOTE:
Irrigation Record Drawings, Sheet Numbers 871A to 871N, were prepared by Stan's Sprinkler Service, Inc. and later accepted by the City of Wichita Parks Department on August 30, 2005.

License #:
1840

RECEIVED
AUG 30 2005
P. E. C.
FIELD OFFICE
4th Draft
Accepted 8-30-05 by

Tom Crain (COW-Parks Dept)

Irrigation
As-Built



Project:
West Kellogg
Flyover: Maize To
Tyler - Turf Areas

Sheet 1 of 13

Drawn By:
P.P.

Checked By:
D.D.

Scale:
1"=30'

Date:
8/29/05