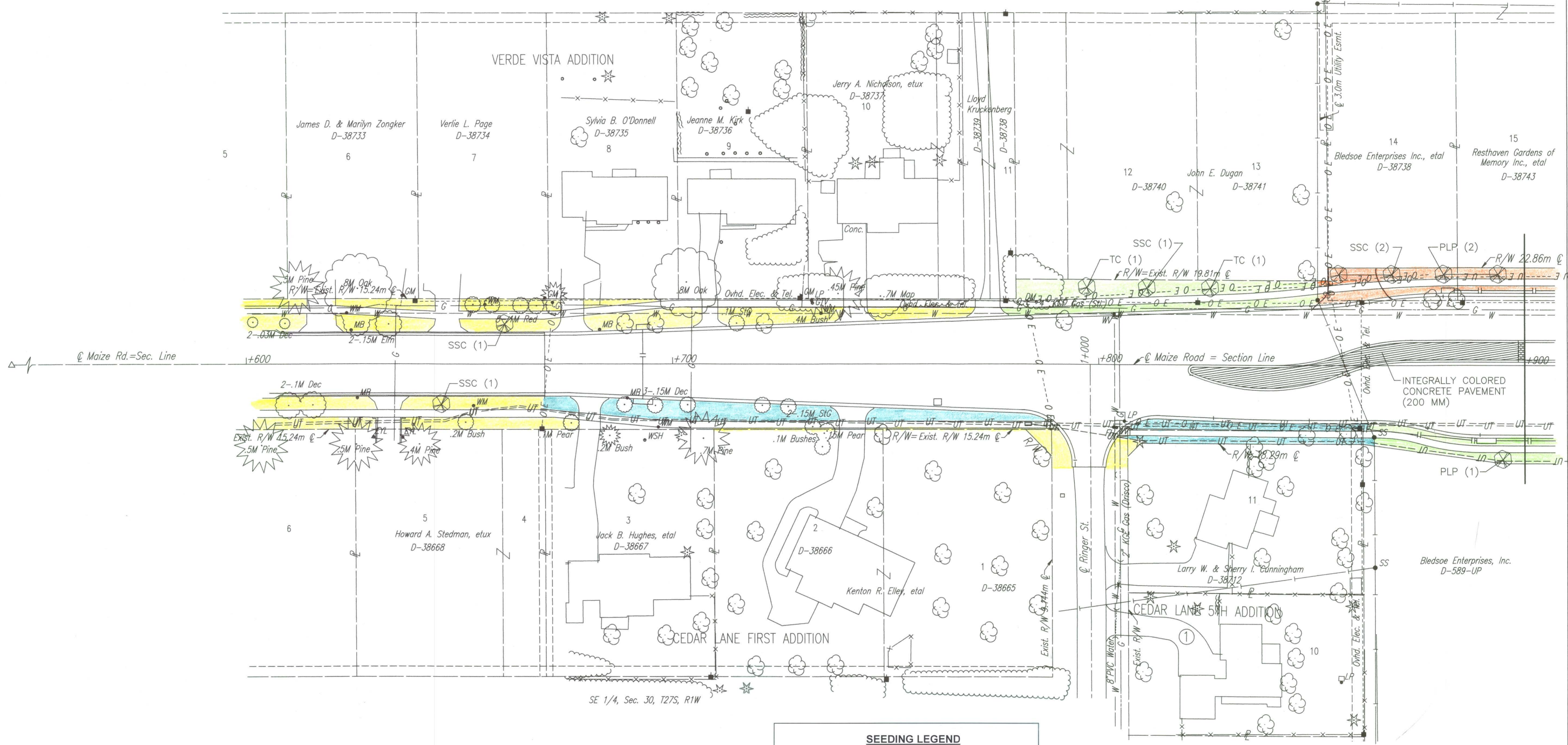


FHWA REGION NO.	STATE	PROJECT NO.	YEAR	SHEET NO.	TOTAL SHEETS
7	KANSAS	54-87 K-6657-01	2002	884	1122

DATE	
BY	
REFERENCES NOTED	
REFERENCES CHECKED	

Scale: 1:500

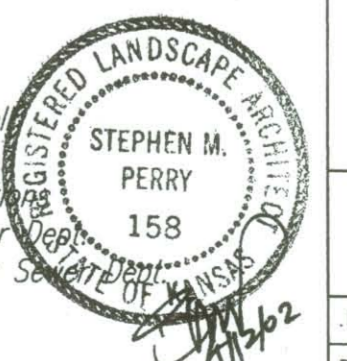
SW 1/4, Sec. 29, T27S, R1W



SEEDING LEGEND

- BUFFALO/ BLUE GRAMA GRASS MIX SEED
- BUFFALO SEED ONLY
- K-31 FESCUE SEED (IRRIGATED)
- K-31 FESCUE SEED (NON-IRRIGATED)
- FESCUE SOD
- COWSKIN CREEK MITIGATION SEEDING
- SOD INSTALLED BY OTHERS (NO-PAY)
- ADDITIONAL AREAS SEEDDED BY CONTRACTOR (NO-PAY)
- AREAS NOT RECEIVING PERMANENT SEEDING

UTILITIES
 Power - K G E
 Telephone - Southwestern Bell
 Gas - Kansas Gas Service
 Cable TV - Cox Communications
 Water - City of Wichita Water Dept.
 San. Sewer - City of Wichita Sewer Dept.



No.	Revisions	By	Date
1			

CITY OF WICHITA
LANDSCAPE PLAN
 MAIZE ROAD
 STA. 3+670 TO STA. 3+900
 SEDGWICK COUNTY

Professional Engineering Consultants, P.A.
 303 S. TOPEKA • WICHITA, KANSAS 67202
 316-262-2691 • FAX 316-262-3003

Designed by	SMP	Checked by	
Drawn by	DWR	Date	April, 2002
		Job No.	97362

DSNR: WDH OPER: DWR SCALE: 1:500
 F: 9934/MZLS3670