

FHWA REGION NO.	STATE	PROJECT NO.	YEAR	SHEET NO.	TOTAL SHEETS
7	KANSAS	54-87 K-6657-01	2002	889	1122

Scale: 1:500

DATE	
BY	
REFERENCES NOTED	
REFERENCES CHECKED	

WICHITA MUNICIPAL AIRPORT ADDITION

RES."F"

NW 1/4, Sec.33, T27S, R1W

Wichita Airport Authority
D-24305

SW 1/4, Sec.28, T27S, R1W

GATES LEARJET ADDITION

(A)
LJT Aquisition Corp.
D-38272

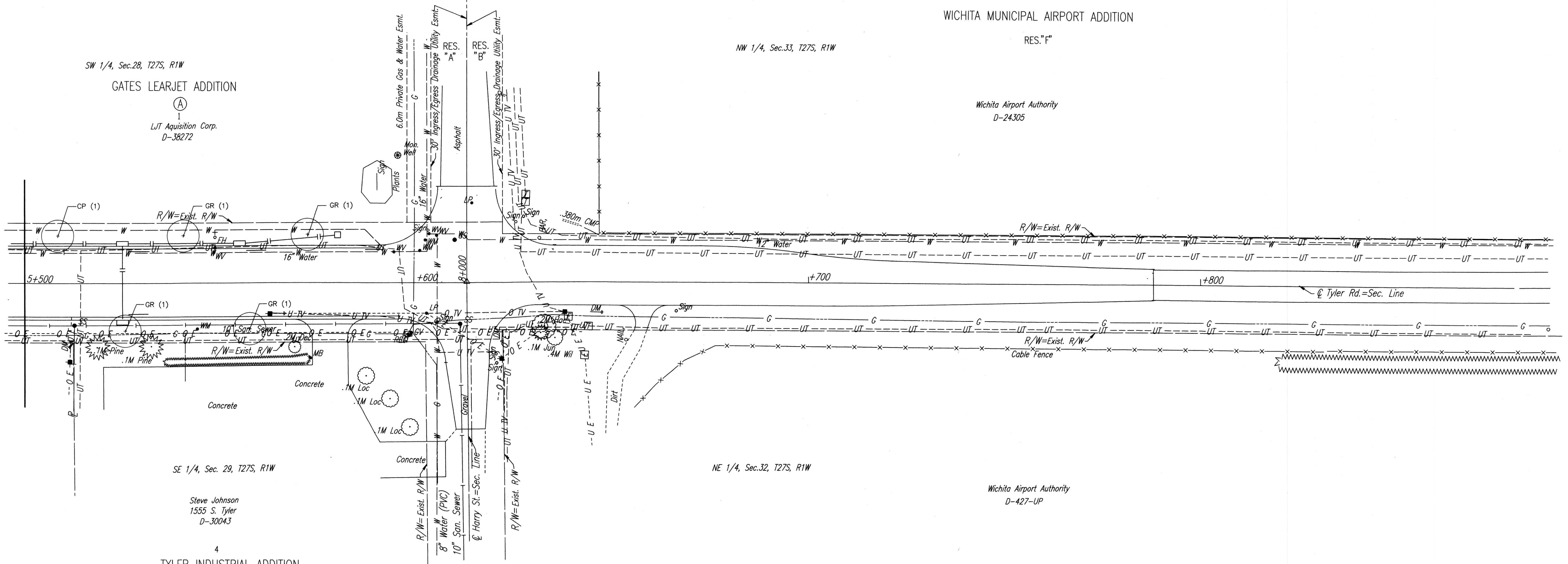
SE 1/4, Sec. 29, T27S, R1W

Steve Johnson
1555 S. Tyler
D-30043

4
TYLER INDUSTRIAL ADDITION

NE 1/4, Sec.32, T27S, R1W

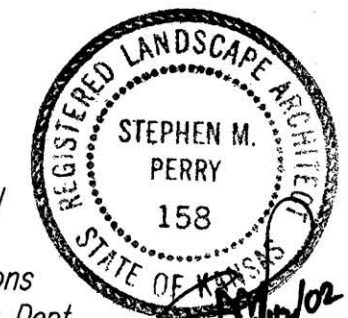
Wichita Airport Authority
D-427-UP



DSNR: WDH OPER: DWR SCALE: 1:500
 F: 99.34/TYLS5500



UTILITIES
 Power - K G & E
 Telephone - Southwestern Bell
 Gas - K G & E Gas
 Cable TV - Cox Communications
 Water - City of Wichita Water Dept.
 San. Sewer - City of Wichita Sewer Dept.



No.	Revisions	By	Date
1			

CITY OF WICHITA
 LANDSCAPE PLAN
 TYLER ROAD
 STA. 5+500 TO STA. 5+800
 SEDGWICK COUNTY

Professional Engineering Consultants, P.A.
 303 S. TOPEKA • WICHITA, KANSAS 67202
 316-262-2691 • FAX 316-262-3003

Designed by	SMP	Checked by	
Drawn by	DWR	Date	April, 2002
		Job No.	97362