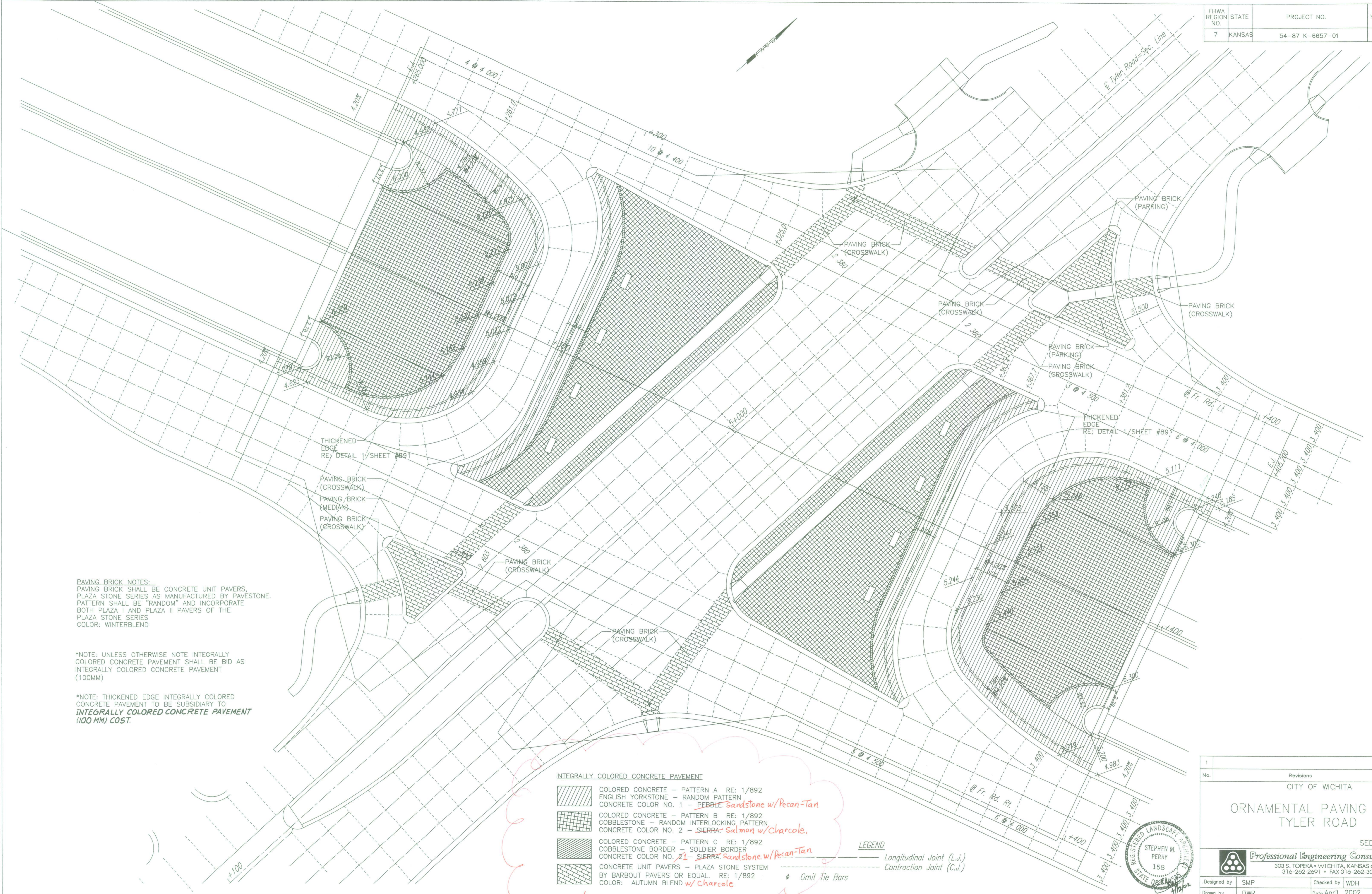


FHWA REGION NO.	STATE	PROJECT NO.	YEAR	SHEET NO.	TOTAL SHEETS
7	KANSAS	54-87 K-6657-01	2002	892	1122

DATE	BY
REFERENCES NOTED	REFERENCES CHECKED

DSNR: WDH OPER: JGP SCALE: 1:250
 i:/1997/97362/INTERSECTIONS/TYLER_mv.p.dgn 12-19-2000 10:32:19 LAST REV: 11-29-01 BY: JGP







PAVING BRICK NOTES:
 PAVING BRICK SHALL BE CONCRETE UNIT PAVERS, PLAZA STONE SERIES AS MANUFACTURED BY PAVESTONE. PATTERN SHALL BE "RANDOM" AND INCORPORATE BOTH PLAZA I AND PLAZA II PAVERS OF THE PLAZA STONE SERIES
 COLOR: WINTERBLEND

*NOTE: UNLESS OTHERWISE NOTE INTEGRALLY COLORED CONCRETE PAVEMENT SHALL BE BID AS INTEGRALLY COLORED CONCRETE PAVEMENT (100MM)

*NOTE: THICKENED EDGE INTEGRALLY COLORED CONCRETE PAVEMENT TO BE SUBSIDIARY TO **INTEGRALLY COLORED CONCRETE PAVEMENT (100 MM) COST.**

INTEGRALLY COLORED CONCRETE PAVEMENT

-  COLORED CONCRETE - PATTERN A RE: 1/892
 ENGLISH YORKSTONE - RANDOM PATTERN
 CONCRETE COLOR NO. 1 - *PEBBLE Sandstone w/Pecan-Tan*
-  COLORED CONCRETE - PATTERN B RE: 1/892
 COBBLESTONE - RANDOM INTERLOCKING PATTERN
 CONCRETE COLOR NO. 2 - *SIERRA Salmon w/Charcole,*
-  COLORED CONCRETE - PATTERN C RE: 1/892
 COBBLESTONE BORDER - SOLDIER BORDER
 CONCRETE COLOR NO. 21 - *SIERRA Sandstone w/Pecan-Tan*
-  CONCRETE UNIT PAVERS - PLAZA STONE SYSTEM BY BARBOUT PAVERS OR EQUAL RE: 1/892
 COLOR: AUTUMN BLEND w/Charcole

LEGEND

- Longitudinal Joint (L.J.)
- - - Contraction Joint (C.J.)
- φ Omit Tie Bars

1			
No.	Revisions	By	Date

CITY OF WICHITA
ORNAMENTAL PAVING PLAN
 TYLER ROAD

SEDGWICK COUNTY

Professional Engineering Consultants, P.A.
 303 S. TOPEKA • WICHITA, KANSAS 67202
 316-262-2691 • FAX 316-262-3003

Designed by	SMP	Checked by	WDH
Drawn by	DWR	Date	April, 2002
		Job No.	97362

