

STATE	PROJECT NO.	YEAR	SHEET NO.	TOTAL SHEETS
KANSAS	54-87 K-6657-01	2002	894A	1122

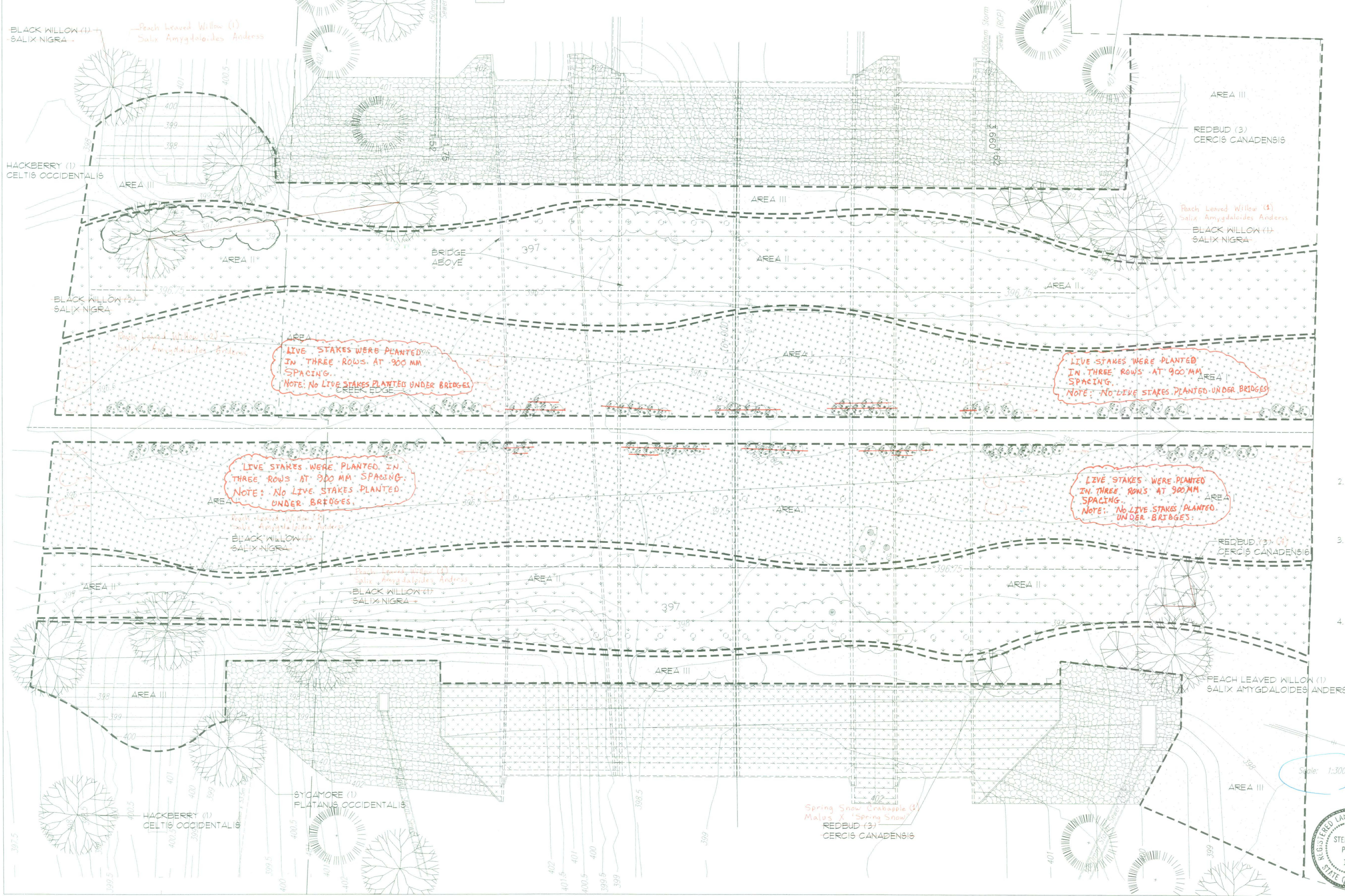
LEGEND

-  AREA I - EMERGENT/WET SPECIES
-  AREA II - WET PRAIRIE SPECIES
-  AREA III - MESIC PRAIRIE SPECIES
-  LIVE STAKES
-  SHRUB/WILDFLOWER MIX

TREES NOT PART OF WETLAND MITIGATION PLAN

TREES NOT PART OF WETLAND MITIGATION PLAN

BID ITEM
WETLAND MITIGATION PLAN: LUMP SUM



NOTES:

- SEED INSTALLATION:**
SEEDING SHALL BE DONE IN LATE FALL (PREFERABLE) AFTER NOVEMBER 1, OR IN EARLY SPRING AFTER SOIL IS FROST FREE BUT NO LATER THAN JUNE 15. IF SEED IS SPRING PLANTED IT SHALL HAVE PROPER STRATIFICATION/SCARIFICATION TO BREAK DORMANCY.
PRIOR TO SEEDING THE CONTRACTOR SHALL DISC THE ENTIRE AREA ROTOVATE OR CHISEL FLOW TO REDUCE COMPACTION.
SEED SHALL BE PLANTED USING A GRAIN DRILL OR NO-TILL PLANTER OR BROADCAST ONTO A LIGHTLY TILLED SOIL SURFACE AND FRESSED IN WITH A CULTIPACKER TYPE ROLLER. IF SOIL IS TOO WET TO INSTALL SEED AS DESCRIBED ABOVE, SEED MAY BE BROADCAST AND THEN ROLLED OR DRAGGED PERPENDICULAR TO THE SLOPE WITHIN 24 HRS.
WITHIN 7 DAYS CRIMP STRAW OR PRAIRIE HAY OVER ENTIRE AREA (EXCEPT AREA I) AT A RATIO OF 2,000 LBS/ACRE
- | SEED TYPES | OZ./ACRE |
|---|----------|
| AREA I | |
| SPARTINA PECTINATA - PRAIRIE CORD GRASS | 2 |
| JUNCUS EFFUSUS - SPIKE RUSH | 1 |
| SCIRPUS AMERICANUS - CHAIRMAKERS RUSH | 0.5 |
| CALAMAGROSTIS CANADENSIS - BLUE JOINT GRASS | 5 |
| CAREX VULPINOIDEA - FOX SEDGE | 32 |
| AREA II | |
| PANICUM VIRGATUM - SWITCH GRASS | 16 |
| ECHINOCHLOA CRUSGALLI - BARNYARD GRASS | 6 |
| SPARTINA PECTINATA - PRAIRIE CORD GRASS | 2 |
| ELYMUS CANADENSIS - CANADA WILD RYE | 8 |
| ELYMUS VIRGINICUS - VIRGINIA WILD RYE | 64 |
| ANDROPOGON GERARDII - BIG BLUESTEM | 80 |
| AREA III | |
| ANDROPOGON SCOPARIUS - LITTLE BLUESTEM | 120 |
| ELYMUS CANADENSIS - CANADA WILD RYE | 8 |
| ELYMUS VIRGINICUS - VIRGINIA WILD RYE | 64 |
| PANICUM VIRGATUM - SWITCH GRASS | 16 |
| SPARTINA PECTINATA - PRAIRIE CORD GRASS | 2 |
| BOUTELOUA CURTIPENDULA - SIDE OATS GRAMMA | 120 |
| LIVE STAKES - UNROOTED CUTTINGS 18-24" LONG 1/2 DIA MIN | % OF MIX |
| SALIX INTERIOR - SAND BAR WILLOW | 70 |
| CORNUS AMOMUM - RED TWIG DOGWOOD | 10 |
| AMORPHA FRUTICOSA - FALSE INDIGO | 10 |
| RHUS AROMATICA - FRAGRANT SUMAC | 10 |
| NATIVE SEEDLINGS - AREA III ONLY | PER ACRE |
| *ALL SEEDLINGS TO BE 1-02-0 BARE ROOT NURSERY STOCK | |
| POPULUS DELTOIDES - COTTONWOOD | 50 |
| CELTIS OCCIDENTALIS - HACKBERRY | 50 |
| JUGLANS NIGRA - BLACK WALNUT | 50 |
| SHRUB/WILDFLOWER MIX | |
| NATIVE SHRUB/WILDFLOWER KANSAS MIX SEEDED AT 7 LBS/ACRE | |
- NATIVE SEEDLINGS ARE TO BE INSTALLED WITH PROTECTION TUBES 4" DIA. X 24" TALL PHOTODEGRADABLE PLASTIC WITH A TWO YEAR LIFE SPAN SUCH AS PRO-GRO TUBES MANUFACTURED BY PROTEX. TUBES ARE TO BE STAKED TO THE GROUND WITH BAMBOO STAKES AND PLASTIC CABLE TIES.
 - EROSION CONTROL - INSTALL EROSION CONTROL FABRIC OVER SEED IN AREA I. UP STREAM SIDE OF ALL FABRIC SHALL BE BURIED IN A TRENCH. STAKE FABRIC PER MFR RECOMMENDATIONS. EROSION CONTROL FABRIC SHALL BE 100% BIODEGRADABLE COCONUT FIBER WITH FIBER NETTING. EROSION CONTROL FABRIC SHALL BE CH25EN AS AVAILABLE FROM NORTH AMERICAN GREEN (1-800-112-2040) OR AN APPROVED EQUAL.
 - POSSIBLE NATIVE SEED AND PLANT SOURCES:
VALLEY FEED AND SEED: 1903 SOUTH MERIDIAN HWY 19 & PO BOX 135 WICHITA KS 67213 316-942-2218
SHARP BROTHERS SEED COMPANY: 396 SW DAVIS ST. - LADUE CLINTON, MO 64135 816-885-1551
FORREST KEELING NURSERY: 9814 PLEASANT HILL ROAD JEFFERSON CITY, MO 65109 513-496-3492
MISSOURI WILDFLOWER NURSERY: 9814 PLEASANT HILL ROAD JEFFERSON CITY, MO 65109 513-496-3492

DSNR: OPER: DWR SCALE: 1:300
 4/1997/97362/001/BRIDGE/COWSKIN/RIPRAP.DGN 11-26-2001 11:42:12 LAST REV: 1-30-2002 BY: ras

1			
No.	Revisions	By	Date
CITY OF WICHITA			
COWSKIN CREEK WETLAND MITIGATION PLAN			
SEDGWICK COUNTY			
Professional Engineering Consultants, P.A.			
303 S. TOPEKA + WICHITA, KANSAS 67202 316-262-2691 • FAX 316-262-3003			
Designed by	SMP	Checked by	XXX
Drawn by	DWR	Date	April, 2002
		Job No.	97362

