

FHWA REGION NO.	STATE	PROJECT NO.	YEAR	SHEET NO.	TOTAL SHEETS
7	KANSAS	54-87 K-6657-01	2002	2	1122

VOLUME I

VOLUME II

VOLUME III

VOLUME IV

VOLUME V

1	Title Sheet
2	Index of Sheets
3-6	Typical Section - Mainline
7-11	Typical Section - Sideroads
12	Foundation Treatment and Compaction of Earthwork
13-14	Superelevation and Cross-slope Transition Diagrams
15	General Notes
16-63	Plan, Geometric Coordinate, and Profile Sheets (US-54)
64-69	Plan and Profile Sheets (Maize Road)
70-75	Plan and Profile Sheets (Tyler Road)
76-81	Ramp Profiles
82-92	Intersection Details
93-116	Paving Plans
117-126	Concrete Bridge Approach Pavement Details
127-134	Pavement Details
135-146	Inlet and Manhole Details
147	Edge Drain Details (Deleted)
148-150	Headwall Details
151-162	Storm Sewer Plans
163-180	Storm Sewer Profiles
181-195	Storm Sewer Schedules
196-227	Waterline Plans, Profiles, and Details
228-233	Concrete Safety Barrier Details
234-236	QuadGuard Details
196-227	(Not included - previously submitted to Water Dept.)

237	Index of Sheets
238	Cast in Place Retaining Walls General Notes
238A	Planter Wall Details
239	Cast-in-place Retaining Walls Architectural Details
240-250	Retaining Wall and Planter Plans (Cast-In-Place)
251	Planter Wall Handrail Details
252-270	Retaining Wall and Planter Elevations (Cast-In-Place)
271-364	Retaining Wall and Planter Details (Cast-In-Place)
365-368	Retaining Wall #9 Details
369-374	Retaining Wall #10 Details
375-376	MSE Retaining Wall General Notes
377-386	MSE Retaining Wall Plans and Profiles
387	Metal End Section
388	Concrete End Sections
389-397	2-2.4x0.9 RCB Details (Sta 14+443.483)
398-399	1.8x0.9 RFB Details (Sta 15+407.000)
400-410	2.4x1.8 RFB Details (Sta 17+090.000)
411-417	3.4x2.4 RFB Details (Sta .17+121.754 to 17+420)
418	RCB Transition Details (3.4x2.4 to 3.0x2.1)
419-425	3.0x2.1RCB Details (Sta 17+423 to 17+776)
426-427	2.1x1.2 RCB Details (Maize Sta. 4+146)
428-429	2.1x1.2 RCB Details (Tyler Sta. 5+311)
430-433	RCB Standard Details

434	Index of Sheets
435-476	Bridge No. 54-87-19.05 (489) W.B. & Bridge No. 54-87-19.06(491) E.B.
477-498	Bridge No. 54-87-19.32(495) F.W.B.
499-531	Bridge No. 54-87-19.30(493) E.B. & Bridge No. 54-87-19.31(494) W.B.
532-564	Bridge No. 54-87-19.29(492) F.E.B.
565-606	Bridge No. 54-87-20.13(496) W.B. & Bridge No. 54-87-20.12(497) E.B.
607-611	Bridge Standards
612-623	Summary of Quantities
624	Earthwork Balances
625	Recapitulation of Quantities
626-631	Temporary Project Water Pollution Control (Soil Erosion)
632-654	Lighting Plans and Details
655-668	Traffic Signals

669	Index of Sheets
670-792	Signing and Pavement Marking
793-794	Construction Sequence
795-823	Traffic Control
823A	Traffic Control
824-846	Traffic Control
847-894	Landscaping and Irrigation Plans and Details
894A	Wetland Mitigation Plan
895-896	Drainage Maps

870 847-894
871A-871N Replaces Sheet No. 847-869

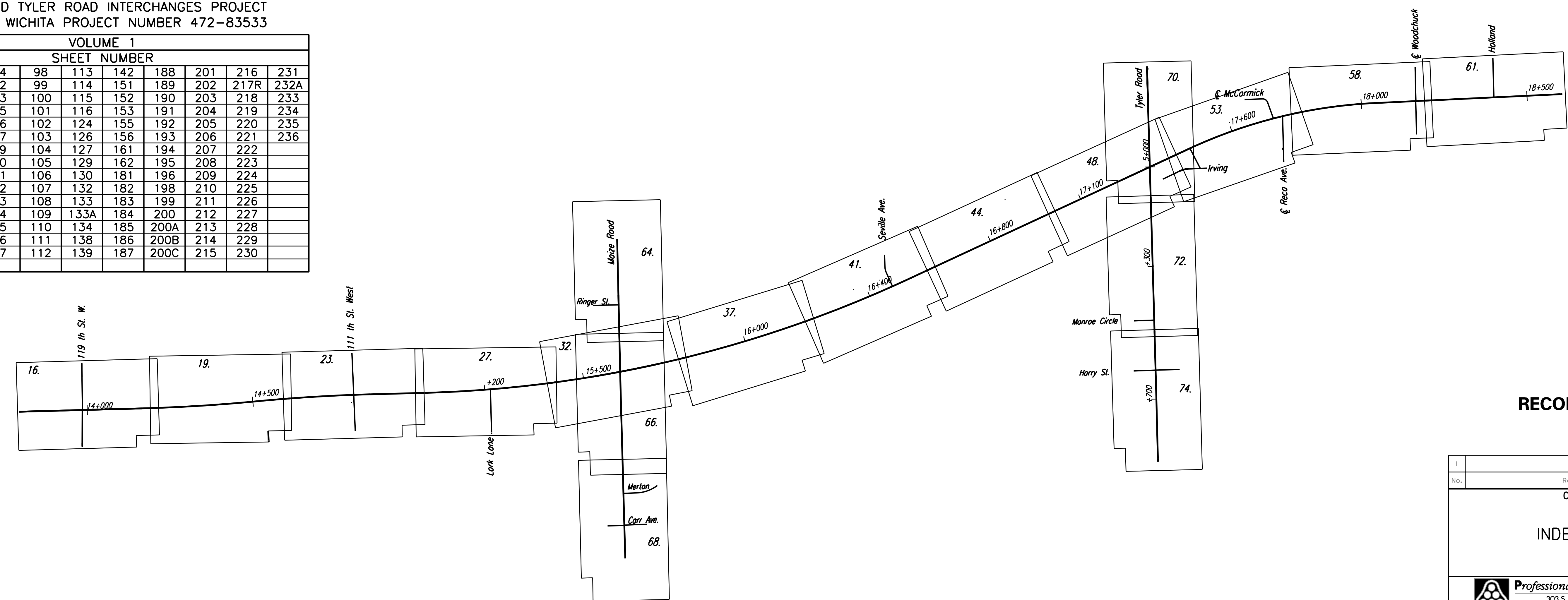
897	Index of Sheets
898-1048	Cross Sections - Mainline and Frontage Roads
1049-1060	Cross Sections - Cowskin
1061-1081	Cross Sections - Maize Road
1082-1106	Cross Sections - Tyler Road
1107-1110	Cross Sections - Woodchuck
1111-1114	Cross Sections - Seville
1115	Cross Sections - Lark
1116	Cross Sections - Irving
1117-1118	Cross Sections - Holland
1119-1120	Cross Sections - Channel Change at Sta. 14+425
1121-1122	Cross Sections - Channel Change at Sta. 17+090

DATE	
BY	
REFERENCES NOTED	
REFERENCES CHECKED	

SHEET INDEX FOR RECORD DRAWING EDITS

WEST KELLOGG FREEWAY
MAIZE AND TYLER ROAD INTERCHANGES PROJECT
CITY OFF WICHITA PROJECT NUMBER 472-83533

VOLUME 1										
SHEET NUMBER										
2A	33	74	98	113	142	188	201	216	231	
3	37	82	99	114	151	189	202	217R	232A	
4	41	83	100	115	152	190	203	218	233	
5	44	85	101	116	153	191	204	219	234	
6	48	86	102	124	155	192	205	220	235	
10	49	87	103	126	156	193	206	221	236	
12	53	89	104	127	161	194	207	222		
15	58	90	105	129	162	195	208	223		
15A	61	91	106	130	181	196	209	224		
16	62	92	107	132	182	198	210	225		
19	64	93	108	133	183	199	211	226		
23	66	94	109	133A	184	200	212	227		
24	68	95	110	134	185	200A	213	228		
27	70	96	111	138	186	200B	214	229		
32	72	97	112	139	187	200C	215	230		



RECORD DRAWING

No.	Revisions	By	Date
CITY OF WICHITA			
INDEX OF SHEETS			
SEDGWICK COUNTY			
Professional Engineering Consultants, P.A.			
303 S. TOPEKA • WICHITA, KANSAS 67202 316-262-2691 • FAX 316-262-3003			
Designed by	WDH	Checked by	
Drawn by	JGP	Date	April, 2002
		Job No.	97362

DSNR: WDH OPER: JGP SCALE: 1:1
 I:/1997/97362/As-Builts/dgn's/Sh 2-Index Last Rev: 8-21-07 By: gdr