

FHWA REGION NO.	STATE	PROJECT NO.	YEAR	SHEET NO.	TOTAL SHEETS
7	KANSAS	54-87 K-6657-01	2002	16	1122

@ Curve Data C7
 P.I. Sta. 14+338.068 Bk.=
 P.I. Sta. 14+337.932 Ahd.
 $\Delta=3^{\circ} 56' 43.7''$
 $R=5000.000$ m
 $T=172.221$ m
 $L=344.306$ m
 $E=2.965$ m
 $S.E.=NC$

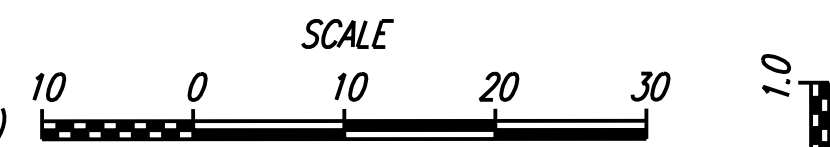
DATE	
BY	
REFERENCES NOTED	
REFERENCES CHECKED	

NOTE:
 Record Drawing information for ADDITIONAL and REVISED "Drive Entrances" are ONLY presented on "Kellogg, Maize Road or Tyler Road Plan" sheets...NOT on "Geometric Coordinate Layouts" or "Paving Plan" sheets.

- LEGEND**
- Pavement Removal
 - Pavement Milling & Bituminous Overlay
 - Concrete Pavement ①
 - Bituminous Pavement ②
 - Light Type Surfacing
 - Light Stone Riprap
 - Proposed Storm Sewer
 - Existing Utilities
 - Proposed Relocated Utilities

- ① Concrete shoulders, curb & gutter, and driveways not shaded. See Driveway Summary of Quantities for pavement type.
 - ② May include areas with Bituminous Overlay on Conc. Base. See Paving Plans & Typ. Sections.
- Note: R/W callouts on Kellogg are to the Future and/or @ Proposed, and not @ Existing Traveled way.

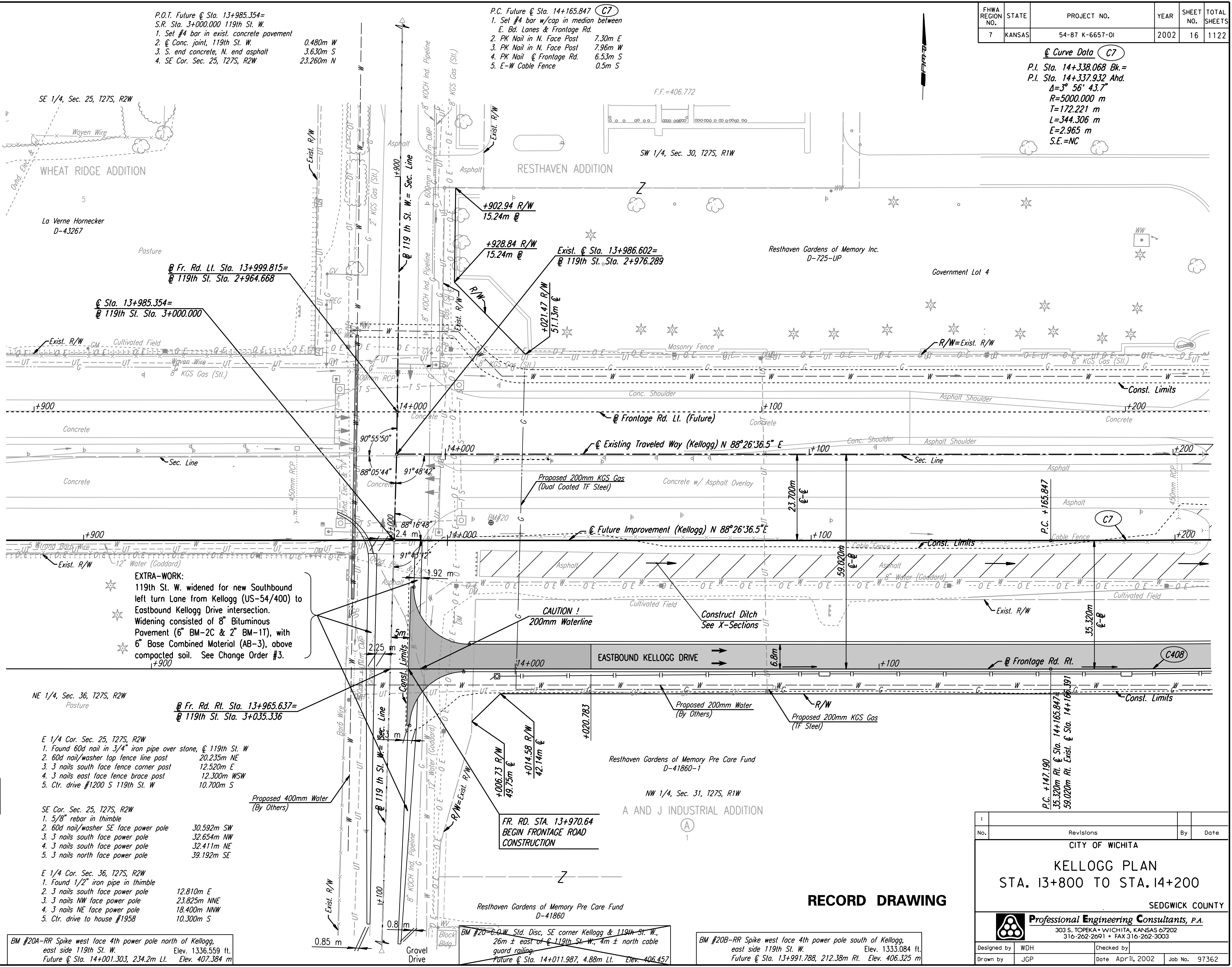
- UTILITIES**
- Power - K G & E
 - Telephone - Southwestern Bell
 - Gas - Kansas Gas Service
 - Cable TV - Cox Communications
 - Water - City of Goddard Water Dept.
 - Pipeline - KOCH Industries
 - Water (Proposed) - City of Wichita



PROFILE: Horiz. same as above, Vert.

Note: These plans are prepared in System International Units (Metric).
 Conversion Factor: 1 Meter = 3.2808333 Feet

PROJECT SURVEY CONTROL
 Datum Bench Mark: BM#9
 Chisled "+" cut on @ south concrete headwall on 4' x 4' RCB, 60.5' Rt. Sta. 442+59.5, Elev. 1414.91 on 1992 KDOT Proj. 54-87 K-3388-01.
 Elev. 431.265 NGVD 29, Located 923.3m W of 119th St. W 18.4m S of @ US-54.



CITY OF WICHITA			
KELLOGG PLAN			
STA. 13+800 TO STA. 14+200			
SEDGWICK COUNTY			
Professional Engineering Consultants, P.A.			
303 S. TOPEKA • WICHITA, KANSAS 67202			
316-262-2691 • FAX 316-262-3003			
Designed by	WDH	Checked by	
Drawn by	JGP	Date	April, 2002
		Job No.	97362

DSNR: WDH OPER: JGP SCALE: 1:500
 I:/1997/97362/As-Builts/dgn/s/Sh 016-pl138.dgn Last Rev: 7-31-07 By: gdr

DESTROYED