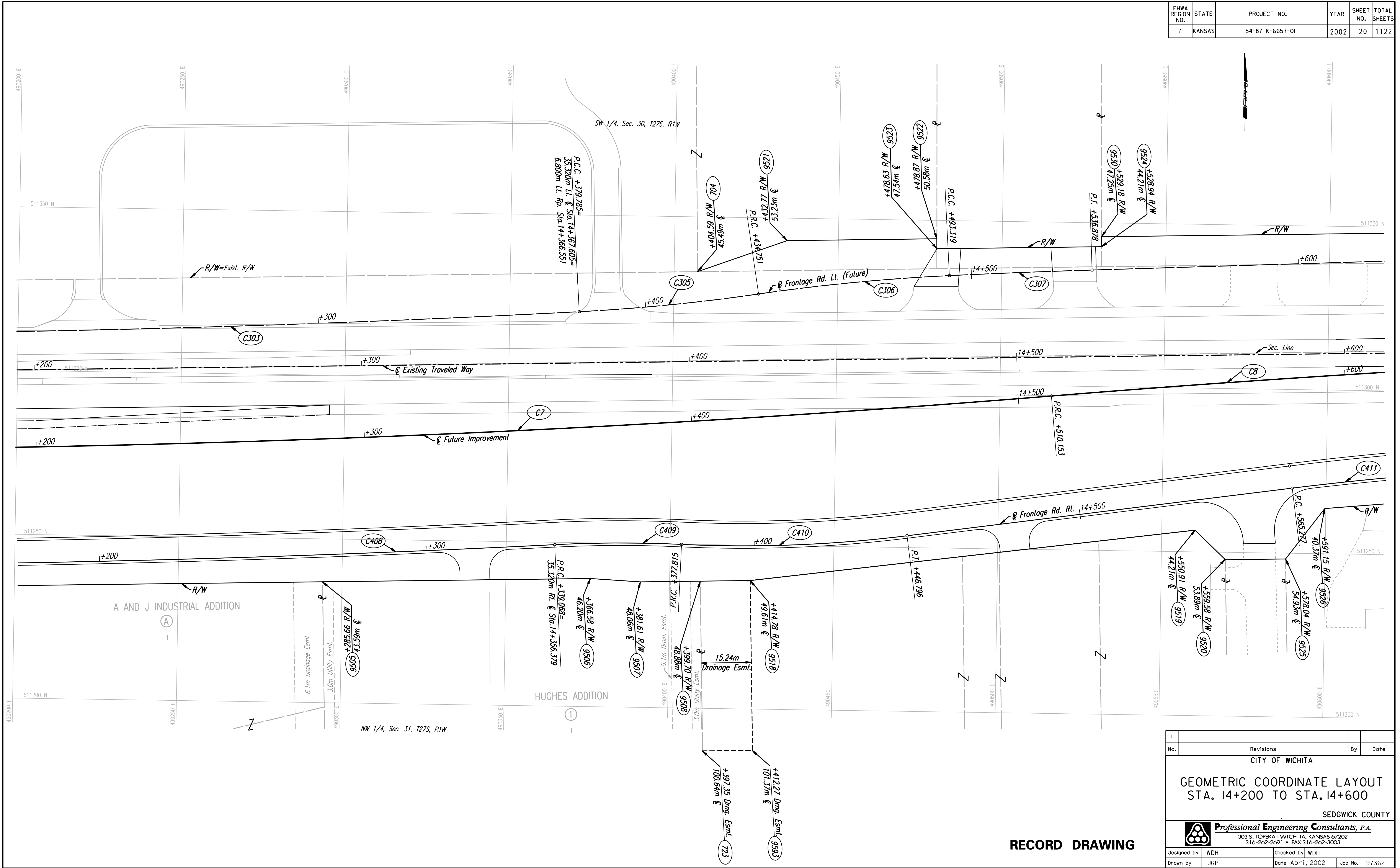


FHWA REGION NO.	STATE	PROJECT NO.	YEAR	SHEET NO.	TOTAL SHEETS
7	KANSAS	54-87 K-6657-01	2002	20	1122

DATE	
BY	
REFERENCES NOTED	
REFERENCES CHECKED	



DSNR: JPS OPER: JGP SCALE: 1:500
 i:/1997/97362/As-Builts/dgn's/Sp_020-g/142.dgn Last Rev: 8-1-07 By: gdr

RECORD DRAWING

No.	Revisions	By	Date
CITY OF WICHITA			
GEOMETRIC COORDINATE LAYOUT STA. 14+200 TO STA. 14+600			
SEDGWICK COUNTY			
Professional Engineering Consultants, P.A. 303 S. TOPEKA • WICHITA, KANSAS 67202 316-262-2691 • FAX 316-262-3003			
Designed by	WDH	Checked by	WDH
Drawn by	JGP	Date	April, 2002
		Job No.	97362