

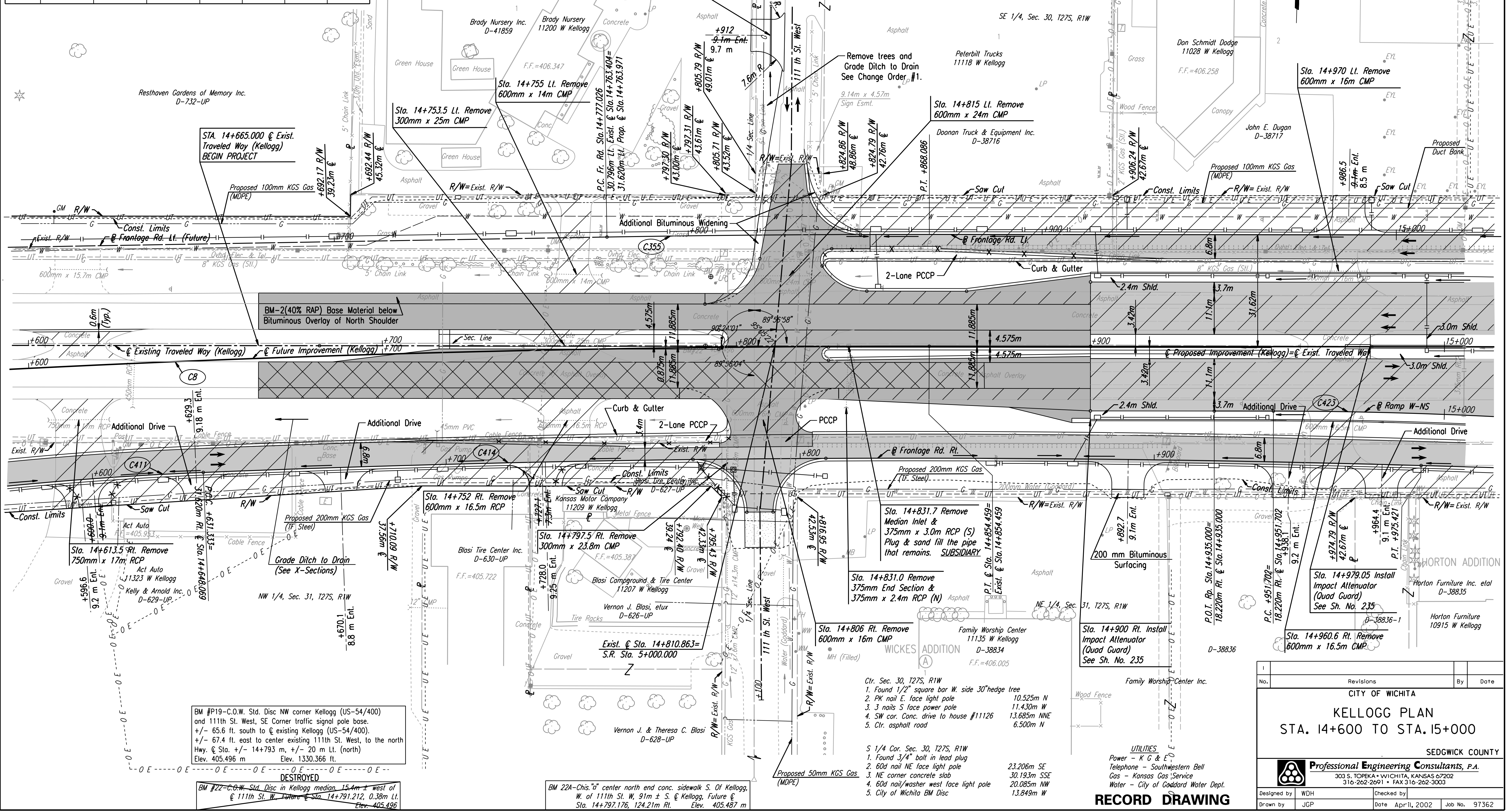
FHWA REGION NO.	STATE	PROJECT NO.	YEAR	SHEET NO.	TOTAL SHEETS
7	KANSAS	54-87 K-6657-01	2002	23	1122

NO.	ALIGNMENT	P.I. STATION	Δ	R	T	L	E
C8	US-54	14+682.374	3° 56' 43.7"	5000.000	172.221	344.306	2.965
C355	Fr. Rd. Lt.	14+822.557	1° 02' 13"	5031.620	45.531	91.060	0.206
C411	Fr. Rd. Rt.	14+598.318	3° 59' 02"	950.000	33.041	66.056	0.574
C414	Fr. Rd. Rt.	14+803.446	3° 58' 05"	4968.380	172.113	344.089	2.980
C423	Ramp W-NS	14+984.182	2° 51' 45"	1300.000	32.480	64.946	0.406

P.I. @ Sta. 14+682.374 Bk. =
P.I. @ Sta. 14+682.238 Ahd. (C8)
1. Set #4 bar w/cap in median
2. S. edge concrete W. Bd. Lanes 4.72 m N
3. PK nail in edge of asphalt E. Bd. Lanes 6.675 m SE
4. PK nail in edge of asphalt E. Bd. Lanes 6.46 m SW

P.T. @ Sta. 14+854.459 (C8)
1. Set #4 bar w/cap in median 4.585 m N
2. S. edge concrete W. Bd. Lanes 7.07 m SE
3. PK nail in edge of asphalt E. Bd. Lanes 7.58 m SW
4. PK nail in edge of asphalt E. Bd. Lanes 49.41 m W
5. S 1/4 Cor. Sec. 30, T27S, R1W

DATE	
BY	
REFERENCES NOTED	
REFERENCES CHECKED	



DSNR: WDH OPER: JGP SCALE: 1:500
 i:/1997/97362/As-Builts/dgn s/Sl_023-pl146.dgn Last Rev: 8-2-07 By: gar

No.	Revisions	By	Date

CITY OF WICHITA
KELLOGG PLAN
STA. 14+600 TO STA. 15+000
SEDGWICK COUNTY

Professional Engineering Consultants, P.A.
 303 S. TOPEKA • WICHITA, KANSAS 67202
 316-262-2691 • FAX 316-262-3003

Designed by	WDH	Checked by	
Drawn by	JGP	Date	April, 2002
		Job No.	97362

RECORD DRAWING