

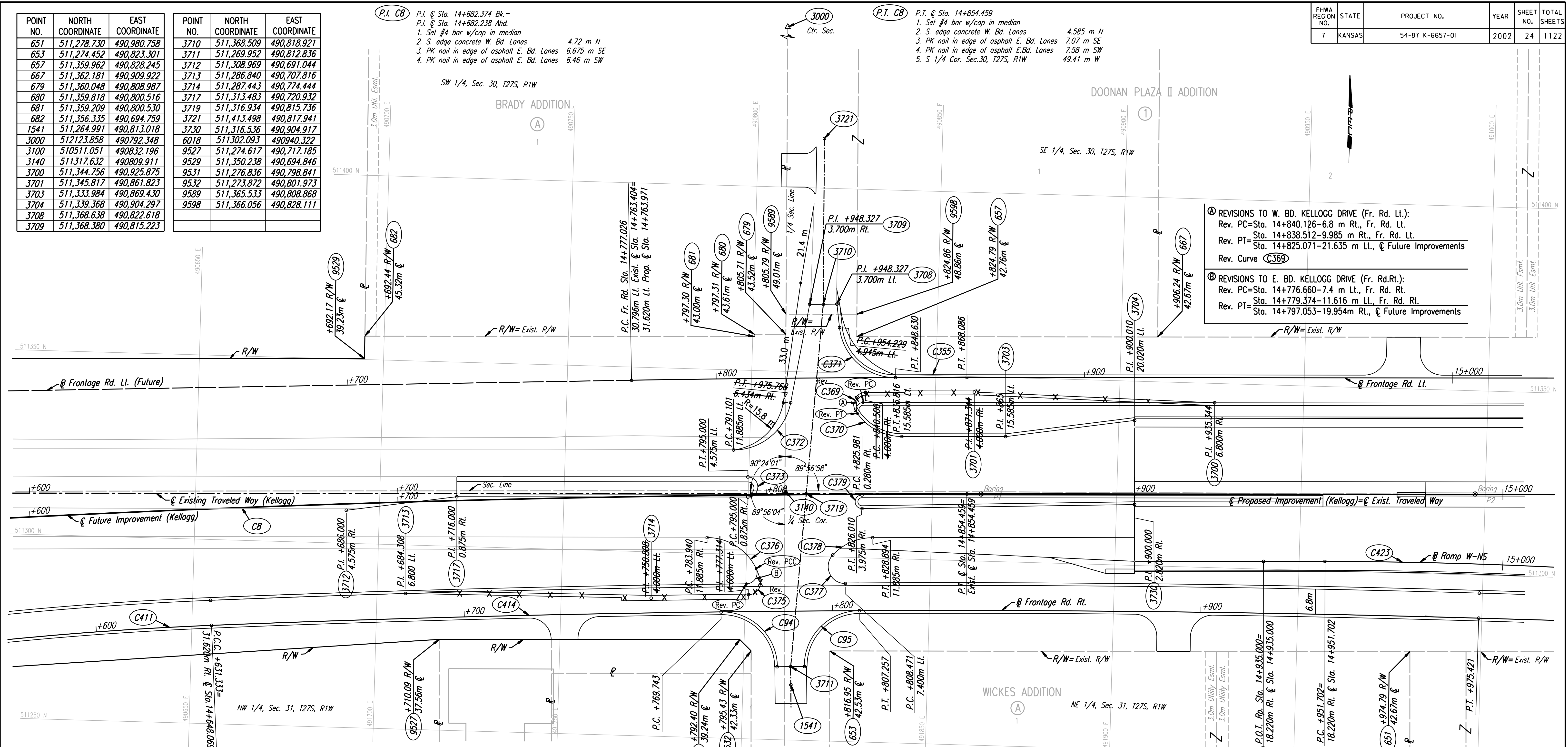
FHWA REGION NO.	STATE	PROJECT NO.	YEAR	SHEET NO.	TOTAL SHEETS
7	KANSAS	54-87 K-6657-01	2002	24	1122

POINT NO.	NORTH COORDINATE	EAST COORDINATE	POINT NO.	NORTH COORDINATE	EAST COORDINATE
651	511,278.730	490,980.758	3710	511,368.509	490,818.921
653	511,274.452	490,823.301	3711	511,269.952	490,812.836
657	511,359.962	490,828.245	3712	511,308.969	490,691.044
667	511,362.181	490,909.922	3713	511,286.840	490,707.816
679	511,360.048	490,808.987	3714	511,287.443	490,774.444
680	511,359.818	490,800.516	3717	511,313.483	490,720.932
681	511,359.209	490,800.530	3719	511,316.934	490,815.736
682	511,356.335	490,694.759	3721	511,413.498	490,817.941
1541	511,264.991	490,813.018	3730	511,316.536	490,904.917
3000	512,123.858	490,792.348	6018	511,302.093	490,940.322
3100	510,511.051	490,832.196	9527	511,274.617	490,717.185
3140	511,317.632	490,809.911	9529	511,350.238	490,694.846
3700	511,344.756	490,925.875	9531	511,276.836	490,798.841
3701	511,345.817	490,861.823	9532	511,273.872	490,801.973
3703	511,333.984	490,869.430	9589	511,365.533	490,808.868
3704	511,339.368	490,904.297	9598	511,366.056	490,828.111
3708	511,368.638	490,822.618			
3709	511,368.380	490,815.223			

**P.I. C8**  
 P.I. @ Sta. 14+682.374 Bk.=  
 P.I. @ Sta. 14+682.238 Ahd.  
 1. Set #4 bar w/cap in median  
 2. S. edge concrete W. Bd. Lanes 4.72 m N  
 3. PK nail in edge of asphalt E. Bd. Lanes 6.675 m SE  
 4. PK nail in edge of asphalt E. Bd. Lanes 6.46 m SW

**P.T. C8**  
 P.T. @ Sta. 14+854.459  
 1. Set #4 bar w/cap in median  
 2. S. edge concrete W. Bd. Lanes 4.585 m N  
 3. PK nail in edge of asphalt E. Bd. Lanes 7.07 m SE  
 4. PK nail in edge of asphalt E. Bd. Lanes 7.58 m SW  
 5. S 1/4 Cor. Sec. 30, T27S, R1W 49.41 m W

DATE	
BY	
REFERENCES NOTED	
REFERENCES CHECKED	



**REVISIONS TO W. BD. KELLOGG DRIVE (Fr. Rd. Lt.):**  
 Rev. PC=Sta. 14+840.126-6.8 m Rt., Fr. Rd. Lt.  
 Rev. PT=Sta. 14+838.512-9.985 m Rt., Fr. Rd. Lt.  
 Rev. Curve (C369)

**REVISIONS TO E. BD. KELLOGG DRIVE (Fr. Rd. Lt.):**  
 Rev. PC=Sta. 14+776.660-7.4 m Lt., Fr. Rd. Lt.  
 Rev. PT=Sta. 14+779.374-11.616 m Lt., Fr. Rd. Lt.  
 Rev. Curve (C369)

CURVE NO.	P.C. COORDINATES		P.I. COORDINATES		P.T. COORDINATES		C.C. COORDINATES	
	NORTH	EAST	NORTH	EAST	NORTH	EAST	NORTH	EAST
C8	511296.928	490515.731	511313.440	490687.159	511318.118	490859.316	506319.963	490995.132
C94	511,284.252	490,793.540	511,284.863	490,808.584	511,269.816	490,809.138	511,269.264	490,794.148
C95	511,270.088	490,816.533	511,285.135	490,815.979	511,285.632	490,831.028	511,270.640	490,831.523
C370	511,339.966	490,828.433	511,332.993	490,832.951	511,333.218	490,841.256	511,348.013	490,840.854
C371	511,349.161	490,839.009	511,348.751	490,825.330	511,362.313	490,823.493	511,364.354	490,838.555
C372	511,341.517	490,810.807	511,328.644	490,808.698	511,328.278	490,795.659	511,344.072	490,795.215
C373	511,315.629	490,799.903	511,315.703	490,802.627	511,318.427	490,802.553	511,318.352	490,799.829
C375	511,289.150	490,809.925	511,289.303	490,804.862	511,293.125	490,803.904	511,292.347	490,800.800
C376	511,293.125	490,803.904	511,304.645	490,801.017	511,304.322	490,789.146	511,289.528	490,789.548
C377	511,292.902	490,826.994	511,292.541	490,816.326	511,300.543	490,823.390	511,297.499	490,826.839
C378	511,300.543	490,823.390	511,305.368	490,827.650	511,305.543	490,834.083	511,290.749	490,834.485
C379	511,317.065	490,830.856	511,317.015	490,829.009	511,315.168	490,829.060	511,315.218	490,830.906
C355	511,346.430	490,767.458	511,348.490	490,812.943	511,349.727	490,858.457	506,319.963	490,995.132
C369	511,344.904	490,831.014	511,344.719	490,825.354	511,339.966	490,828.433	511,341.706	490,831.119
C411	511,269.906	490,589.648	511,274.450	490,622.375	511,276.710	490,655.339	510,328.935	490,720.311
C414	511,276.710	490,655.339	511,288.481	490,827.049	511,288.342	490,999.162	506,319.963	490,995.132
C423	511,302.546	490,957.018	511,303.429	490,989.486	511,302.688	491,021.957	510,003.026	490,992.330

NO.	ALIGNMENT	P.I. STATION	Δ	R	T	L	E
C8	US-54	14+682.374	3° 56' 43.7"	5000.000	172.221	344.306	2.965
C94	111th	5+032.451	90° 12' 59"	15.000	15.057	23.619	6.253
C95	111th	5+031.724	90° 12' 59"	15.000	15.057	23.619	6.253
C355	Fr. Rd. Lt.	14+822.557	1° 02' 13"	5031.620	45.531	91.060	0.206
C369	Fr. Rd. Lt.	14+834.832	121° 04' 02"	3.200	5.664	6.762	3.305
C370	Exit. US-54	14+828.507	58° 37' 07"	14.800	8.309	15.142	2.173
C371	111th	4+967.652	83° 59' 52"	15.200	13.686	22.284	5.253
C372	111th	4+988.746	79° 05' 13"	15.800	13.045	21.809	4.689
C373	Exit. US-54	14+797.725	180° 00' 00"	2.725	—	8.560	—
C375	Fr. Rd. Lt.	14+781.250	101° 49' 46"	3.200	3.940	5.687	1.876
C376	Exit. US-54	14+795.816	77° 29' 20"	14.800	11.876	20.016	4.176
C377	Fr. Rd. Rt.	14+792.813	133° 22' 23"	4.600	10.674	10.708	7.023
C378	Exit. US-54	14+822.458	47° 00' 24"	14.800	6.436	12.142	1.339
C379	Exit. US-54	14+824.133	180° 53' 39"	1.847	—	5.833	—
C411	Fr. Rd. Rt.	14+598.318	3° 59' 02"	950.000	33.041	66.056	0.574
C414	Fr. Rd. Rt.	14+803.446	3° 58' 05"	4968.380	172.113	344.089	2.980
C423	Ramp W-NS	14+984.182	2° 51' 45"	1300.000	32.480	64.946	0.406

**RECORD DRAWING**

CITY OF WICHITA			
GEOMETRIC COORDINATE LAYOUT STA. 14+600 TO STA. 15+000			
SEDGWICK COUNTY			
Professional Engineering Consultants, P.A. 303 S. TOPEKA • WICHITA, KANSAS 67202 316-262-2691 • FAX 316-262-3003			
Designed by	JPS	Checked by	WDH
Drawn by	JGP	Date	April, 2002
		Job No.	97362

DSNR: WDH OPER: JGP SCALE: 1:500  
 i:/1997/97362/As-Builts/dgn/s/5h 024-g 146.dgn Last Rev: 8-2-07 By: gdr