

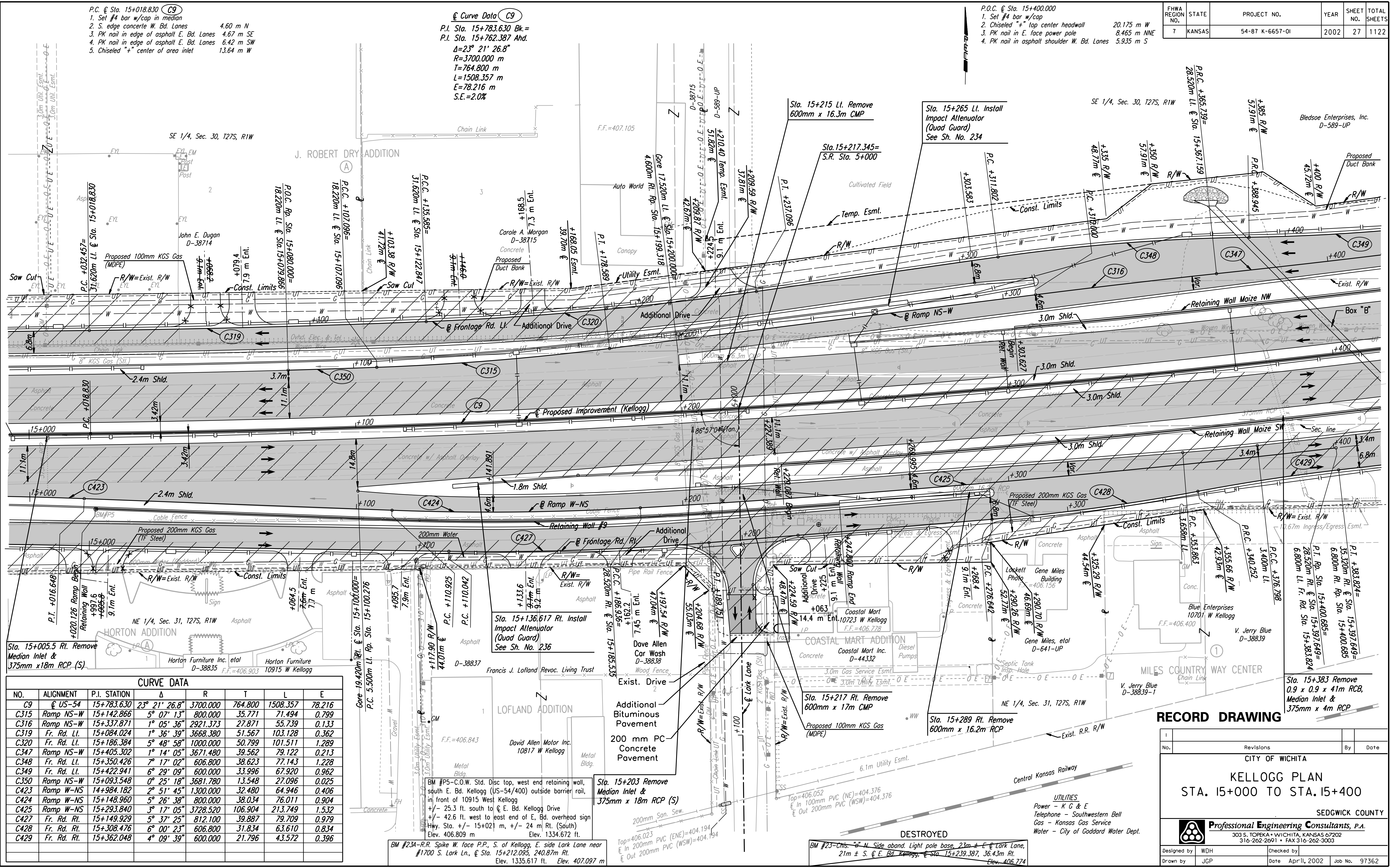
P.C. @ Sta. 15+018.830 (C9)
 1. Set #4 bar w/cap in median
 2. S. edge concrete W. Bd. Lanes 4.60 m N
 3. PK nail in edge of asphalt E. Bd. Lanes 4.67 m SE
 4. PK nail in edge of asphalt E. Bd. Lanes 6.42 m SW
 5. Chiseled "+" center of area inlet 13.64 m W

Curve Data (C9)
 P.I. Sta. 15+783.630 Bk.=
 P.I. Sta. 15+762.387 Ahd.
 $\Delta=23^\circ 21' 26.8''$
 $R=3700.000$ m
 $T=764.800$ m
 $L=1508.357$ m
 $E=78.216$ m
 $S.E.=2.0\%$

P.O.C. @ Sta. 15+400.000
 1. Set #4 bar w/cap
 2. Chiseled "+" top center headwall 20.175 m W
 3. PK nail in E. face power pole 8.465 m NNE
 4. PK nail in asphalt shoulder W. Bd. Lanes 5.935 m S

FHWA REGION NO.	STATE	PROJECT NO.	YEAR	SHEET NO.	TOTAL SHEETS
7	KANSAS	54-87 K-6657-01	2002	27	1122

DATE	
BY	
REFERENCES NOTED	
REFERENCES CHECKED	



NO.	ALIGNMENT	P.I. STATION	Δ	R	T	L	E
C9	@ US-54	15+783.630	$23^\circ 21' 26.8''$	3700.000	764.800	1508.357	78.216
C315	Ramp NS-W	15+142.866	$5^\circ 07' 13''$	800.000	35.771	71.494	0.799
C316	Ramp NS-W	15+337.871	$1^\circ 05' 36''$	2921.373	27.871	55.739	0.133
C319	Fr. Rd. Lt.	15+084.024	$1^\circ 36' 39''$	3668.380	51.567	103.128	0.362
C320	Fr. Rd. Lt.	15+186.384	$5^\circ 48' 58''$	1000.000	50.799	101.511	1.289
C347	Ramp NS-W	15+405.302	$1^\circ 14' 05''$	3671.480	39.562	79.122	0.213
C348	Fr. Rd. Lt.	15+350.426	$7^\circ 17' 02''$	606.800	38.623	77.143	1.228
C349	Fr. Rd. Lt.	15+422.941	$6^\circ 29' 09''$	600.000	33.996	67.920	0.962
C350	Ramp NS-W	15+093.548	$0^\circ 25' 18''$	3681.780	13.548	27.096	0.025
C423	Ramp W-NS	14+984.182	$2^\circ 51' 45''$	1300.000	32.480	64.946	0.406
C424	Ramp W-NS	15+148.960	$5^\circ 26' 38''$	800.000	38.034	76.011	0.904
C425	Ramp W-NS	15+293.840	$3^\circ 17' 05''$	3728.520	106.904	213.749	1.532
C427	Fr. Rd. Rt.	15+149.929	$5^\circ 37' 25''$	812.100	39.887	79.709	0.979
C428	Fr. Rd. Rt.	15+308.476	$6^\circ 00' 23''$	606.800	31.834	63.610	0.834
C429	Fr. Rd. Rt.	15+362.048	$4^\circ 09' 39''$	600.000	21.796	43.572	0.396

BM #P5-C.O.W. Std. Disc top, west end retaining wall, south E. Bd. Kellogg (US-54/400) outside barrier rail, in front of 10915 West Kellogg
 +/- 25.3 ft. south to @ E. Bd. Kellogg Drive
 +/- 42.6 ft. west to east end of E. Bd. overhead sign Hwy. Sta. +/- 15+021 m, +/- 24 m Rt. (South)
 Elev. 406.809 m Elev. 1334.672 ft.

BM #23A-RR. Spike W. face P.P., S. of Kellogg, E. side Lark Lane near #1700 S. Lark Ln., @ Sta. 15+212.095, 240.87m Rt.
 Elev. 1335.617 ft. Elev. 407.097 m

BM #23-Chs. "N" Side aband. Light pole base, 23m +/- E of Lark Lane, 21m +/- S. @ E. Bd. Kellogg, @ Sta. 15+239.387, 36.43m Rt.
 Elev. 406.774

RECORD DRAWING

No.	Revisions	By	Date

CITY OF WICHITA
KELLOGG PLAN
 STA. 15+000 TO STA. 15+400

SEDGWICK COUNTY
Professional Engineering Consultants, P.A.
 303 S. TOPEKA • WICHITA, KANSAS 67202
 316-262-2691 • FAX 316-262-3003

Designed by: WDH
 Checked by: []
 Drawn by: JGP
 Date: April, 2002
 Job No.: 97362

DSNR: WDH OPER: JGP SCALE: 1:500
 i:/1997/97362/As-Builts/dgn s/Sh 027-pl150-m-dgn Last Rev: 8-3-07 By: gdr