

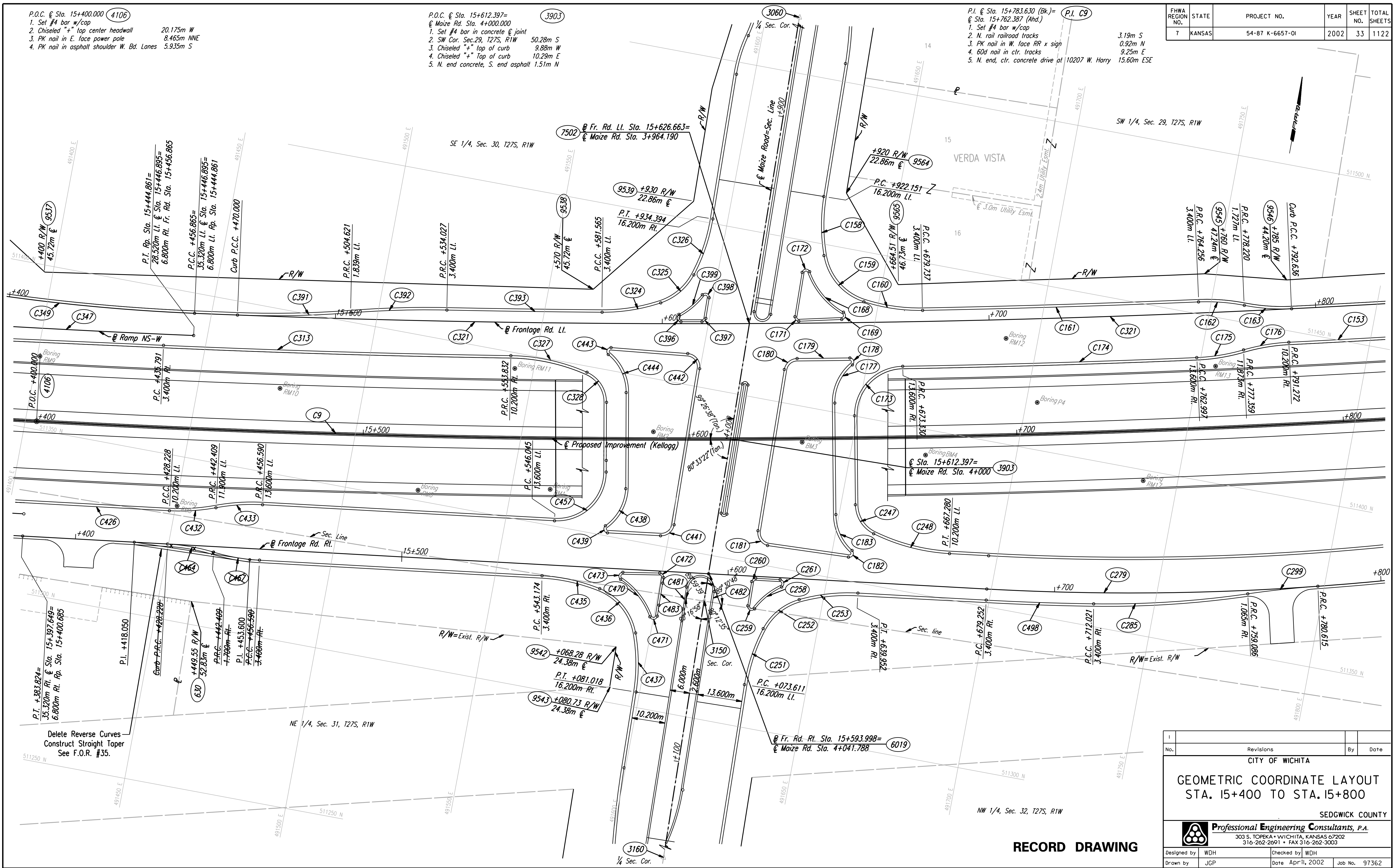
DATE	
BY	
REFERENCES NOTED	
REFERENCES CHECKED	

- P.O.C. @ Sta. 15+400.000 (4106)
1. Set #4 bar w/cap
 2. Chiseled "+" top center headwall 20.175m W
 3. PK nail in E. face power pole 8.465m NNE
 4. PK nail in asphalt shoulder W. Bd. Lanes 5.935m S

- P.O.C. @ Sta. 15+612.397= (3903)
1. Set #4 bar in concrete @ joint
 2. SW Cor. Sec. 29, T27S, R1W 50.28m S
 3. Chiseled "+" top of curb 9.88m W
 4. Chiseled "+" Top of curb 10.29m E
 5. N. end concrete, S. end asphalt 1.51m N

- P.I. @ Sta. 15+783.630 (Bk.)= (P.I. C9)
1. Set #4 bar w/cap
 2. N. rail railroad tracks 3.19m S
 3. PK nail in W. face RR x sign 0.92m N
 4. 60d nail in ctr. tracks 9.25m E
 5. N. end, ctr. concrete drive at 10207 W. Harry 15.60m ESE

FHWA REGION NO.	STATE	PROJECT NO.	YEAR	SHEET NO.	TOTAL SHEETS
7	KANSAS	54-87 K-6657-01	2002	33	1122



DSNR: JPS OPER: JGP SCALE: 1:500
 i:/1997/97362/As-Built/dgn's/Sh 033-g154.dgn Last Rev: 8-6-07 By: gdr

Delete Reverse Curves
 Construct Straight Taper
 See F.O.R. #35.

CITY OF WICHITA			
GEOMETRIC COORDINATE LAYOUT STA. 15+400 TO STA. 15+800			
SEDGWICK COUNTY			
Professional Engineering Consultants, P.A. 303 S. TOPEKA • WICHITA, KANSAS 67202 316-262-2691 • FAX 316-262-3003			
Designed by	WDH	Checked by	WDH
Drawn by	JGP	Date	April, 2002
		Job No.	97362

RECORD DRAWING