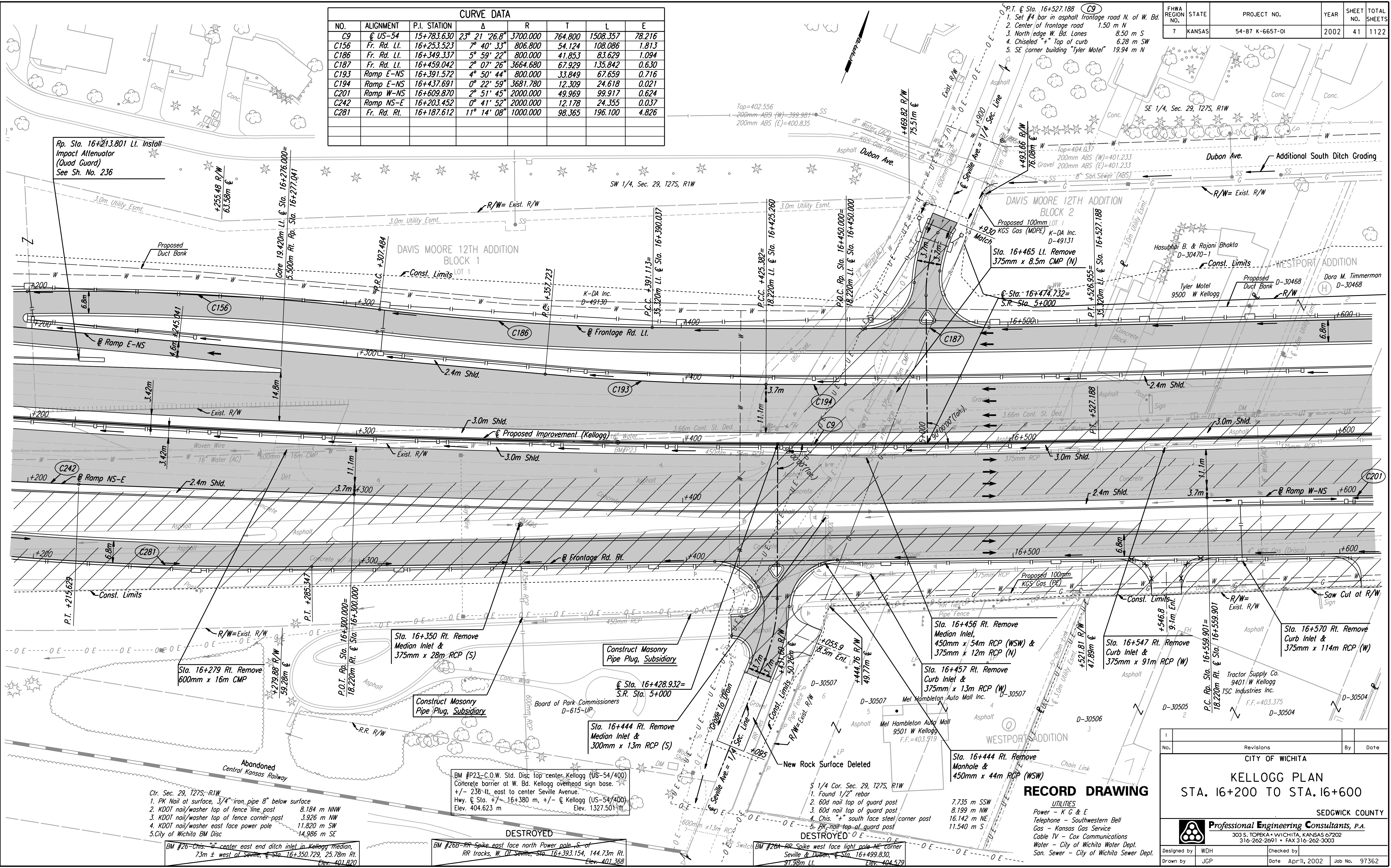


CURVE DATA							
NO.	ALIGNMENT	P.I. STATION	Δ	R	T	L	E
C9	US-54	15+783.630	23° 21' 26.8"	3700.000	764.800	1508.357	78.216
C156	Fr. Rd. Lt.	16+253.523	7° 40' 33"	806.800	54.124	108.086	1.813
C186	Fr. Rd. Lt.	16+349.337	5° 59' 22"	800.000	41.853	83.629	1.094
C187	Fr. Rd. Lt.	16+459.042	2° 07' 26"	3664.680	67.929	135.842	0.630
C193	Ramp E-NS	16+391.572	4° 50' 44"	800.000	33.849	67.659	0.716
C194	Ramp E-NS	16+437.691	0° 22' 59"	3681.780	12.309	24.618	0.021
C201	Ramp W-NS	16+609.870	2° 51' 45"	2000.000	49.969	99.917	0.624
C242	Ramp NS-E	16+203.452	0° 41' 52"	2000.000	12.178	24.355	0.037
C281	Fr. Rd. Rt.	16+187.612	11° 14' 08"	1000.000	98.365	196.100	4.826

FHWA REGION NO.	STATE	PROJECT NO.	YEAR	SHEET NO.	TOTAL SHEETS
7	KANSAS	54-87 K-6657-01	2002	41	1122

DATE	
BY	
REFERENCES NOTED	
REFERENCES CHECKED	



DSNR: WDH OPER: JGP SCALE: 1:500
 i:/1997/97362/As-Builts/dgn/s/Sh 041-pl162-dgn Last Rev: 8-6-07 By: gdr

- Clr. Sec. 29, T27S, R1W
- PK Nail at surface, 3/4" iron pipe 8" below surface
 - KDOT nail/washer top of fence line post 8.184 m NNW
 - KDOT nail/washer top of fence corner post 3.926 m NW
 - KDOT nail/washer east face power pole 11.820 m SW
 - City of Wichita BM Disc 14.986 m SE

BM #26-Chis. "d" center east end ditch inlet in Kellogg median, 73m ± west of Seville, Sta. 16+350.729, 25.78m Rt. Elev. 401.820

BM #P23-C.O.W. Std. Disc top center Kellogg (US-54/400) Concrete barrier at W. Bd. Kellogg overhead sign base. +/- 238-ft. east to center Seville Avenue. Hwy. C Sta. +/- 16+380 m, +/- C Kellogg (US-54/400) Elev. 404.623 m Elev. 1327.501-ft.

BM #26B-RR Spike east face north Power pole S of RR tracks, W. of Seville, Sta. 16+393.154, 144.73m Rt. Elev. 401.368

- DESTROYED**
- Found 1/2" rebar
 - 60d nail top of guard post
 - 60d nail top of guard post
 - Chis. "+" south face steel corner post
 - 5-8g nail top of guard post

BM #26A-RR Spike west face light pole NE corner Seville & Dubon, Sta. 16+499.830, 97.98m Lt. Elev. 404.579

7.735 m SSW
 8.199 m NW
 16.142 m NE
 11.540 m S