

DATE	
BY	
REFERENCES NOTED	
REFERENCES CHECKED	

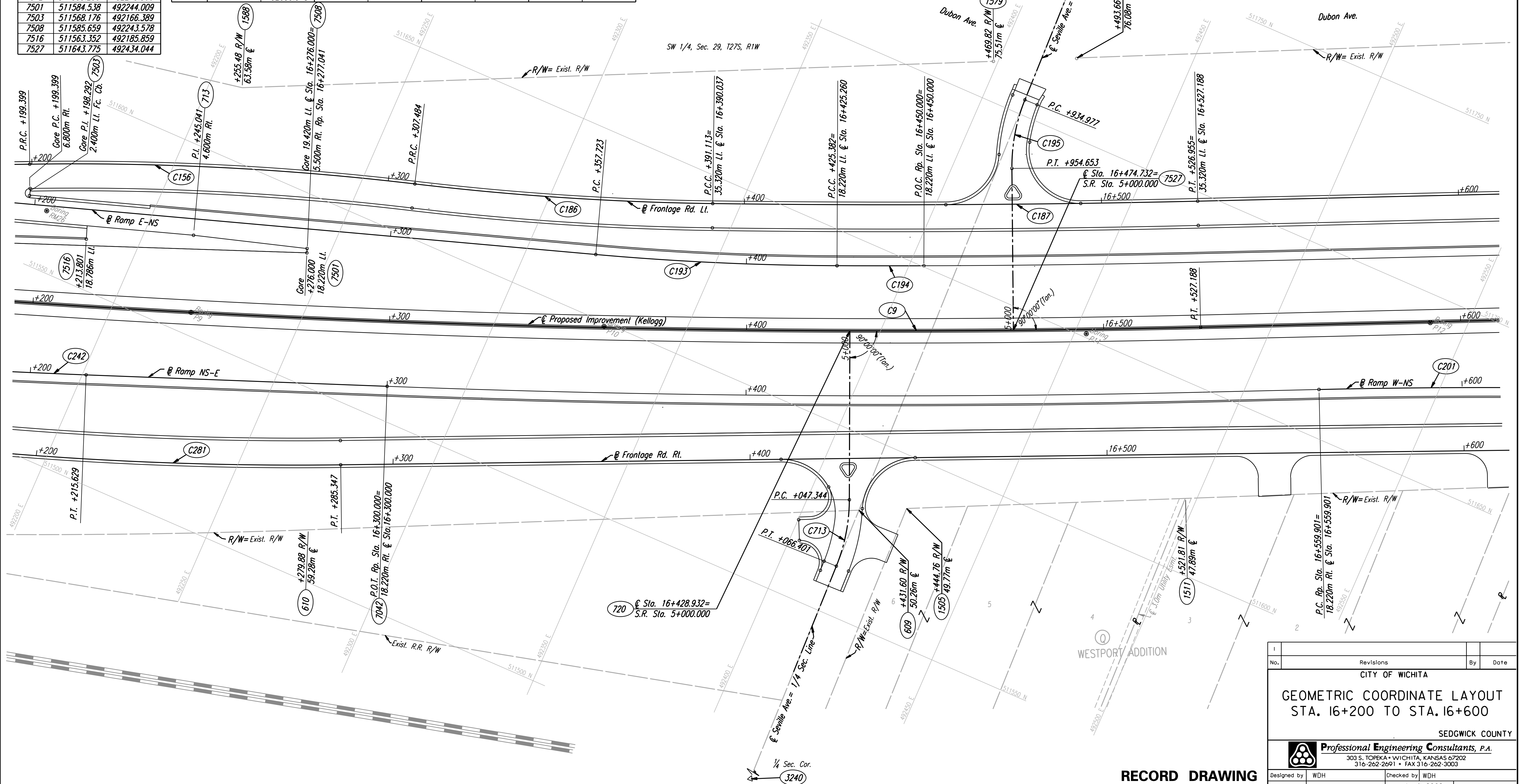
POINT NO.	NORTH COORDINATE	EAST COORDINATE
443	511720.841	492419.882
609	511580.279	492414.552
610	511513.615	492275.488
713	511576.364	492212.945
720	511625.332	492392.122
1505	511586.051	492426.592
1511	511619.806	492497.007
1579	511710.740	492398.812
1588	511619.695	492208.889
2900	512168.465	492398.578
3240	511361.070	492420.505
7042	511559.250	492279.566
7501	511584.538	492244.009
7503	511568.176	492166.389
7508	511585.659	492243.578
7516	511563.352	492185.859
7527	511643.775	492434.044

CURVE NO.	CURVE COORDINATES							
	P.C. COORDINATES		P.I. COORDINATES		P.T. COORDINATES		C.C. COORDINATES	
	NORTH	EAST	NORTH	EAST	NORTH	EAST	NORTH	EAST
C9	511322.583	491023.627	511343.357	491788.145	511665.535	492481.773	515021.218	490923.123
C154	511570.073	492165.755	511592.309	492214.599	511607.821	492265.976	510841.968	492497.210
C156	511576.262	492162.937	511598.687	492212.197	511614.331	492264.011	510841.968	492497.210
C186	511614.331	492264.011	511626.428	492304.077	511642.640	492342.662	512380.184	492032.777
C187	511642.640	492342.662	511668.952	492405.287	511697.568	492466.895	515021.218	490923.123
C193	511616.462	492318.351	511627.197	492350.453	511640.605	492381.534	512375.166	492064.641
C194	511640.605	492381.534	511645.481	492392.836	511650.432	492404.106	515021.218	490923.123
C195	511704.230	492411.186	511694.267	492411.456	511685.169	492415.526	511705.587	492461.167
C201	511662.791	492519.118	511683.841	492564.437	511702.601	492610.750	509848.908	493361.632
C242	511519.724	492178.280	511524.028	492189.672	511528.471	492201.010	513390.635	491471.390
C281	511471.229	492090.948	511493.438	492186.774	511533.893	492276.435	512445.406	491865.163

NO.	ALIGNMENT	P.I. STATION	Δ	R	T			E
					T	L	E	
C9	US-54	15+783.630	23° 21' 26.8"	3700.000	764.800	1508.357	78.216	
C156	Fr. Rd. Lt.	16+253.523	7° 40' 33"	806.800	54.124	108.086	1.813	
C186	Fr. Rd. Lt.	16+349.337	5° 59' 22"	800.000	41.853	83.629	1.094	
C187	Fr. Rd. Lt.	16+459.042	2° 07' 26"	3664.680	67.929	135.842	0.630	
C193	Ramp E-NS	16+391.572	4° 50' 44"	800.000	33.849	67.659	0.716	
C194	Ramp E-NS	16+437.691	0° 22' 59"	3681.780	12.309	24.618	0.021	
C195	Seville	4+944.944	22° 32' 46"	50.000	9.966	19.675	0.984	
C201	Ramp W-NS	16+609.870	2° 51' 45"	2000.000	49.969	99.917	0.624	
C242	Ramp NS-E	16+203.452	0° 41' 52"	2000.000	12.178	24.355	0.037	
C281	Fr. Rd. Rt.	16+187.612	11° 14' 08"	1000.000	98.365	196.100	4.826	
C713	Seville	5+056.989	21° 50' 12"	50.000	9.645	19.056	0.922	

FHWA REGION NO.	STATE	PROJECT NO.	YEAR	SHEET NO.	TOTAL SHEETS
7	KANSAS	54-87 K-6657-01	2002	42	1122

- P.T. @ Sta. 16+527.188 (P.T. C9)
- Set #4 bar in asphalt frontage road N. of W. Bd.
 - Center of frontage road 1.30m N
 - North edge W. Bd. Lanes 8.50m S
 - Chiseled "T" Top of curb 6.28m SW
 - SE corner building "Tyler Motel" 19.94m N



DSNR: JPS OPER: JGP SCALE: 1:500
 K/1997/97362/As-Builts/dgn's/Sh 042-g162-dgn Last Rev: 8-6-07 By: gdr

No.	Revisions	By	Date
CITY OF WICHITA			
GEOMETRIC COORDINATE LAYOUT STA. 16+200 TO STA. 16+600			
SEDGWICK COUNTY			
Professional Engineering Consultants, P.A.			
303 S. TOPEKA • WICHITA, KANSAS 67202 316-262-2691 • FAX 316-262-3003			
Designed by	WDH	Checked by	WDH
Drawn by	JGP	Date	Apr 11, 2002
		Job No.	97362

RECORD DRAWING