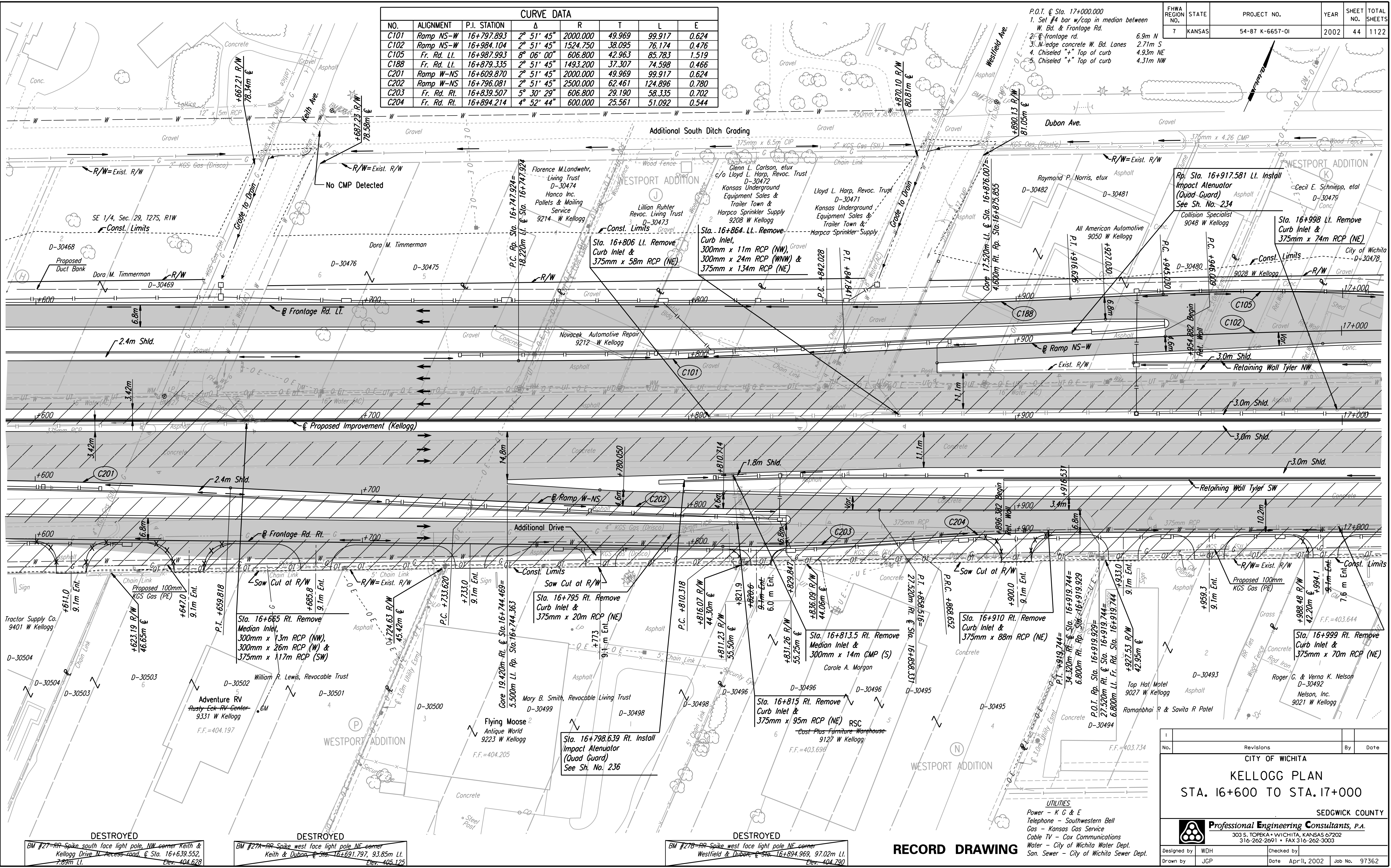


CURVE DATA							
NO.	ALIGNMENT	P.I. STATION	Δ	R	T	L	E
C101	Ramp NS-W	16+797.893	2° 51' 45"	2000.000	49.969	99.917	0.624
C102	Ramp NS-W	16+984.104	2° 51' 45"	1524.750	38.095	76.174	0.476
C105	Fr. Rd. Lt.	16+987.993	8° 06' 00"	606.800	42.963	85.783	1.519
C188	Fr. Rd. Lt.	16+879.335	2° 51' 45"	1493.200	37.307	74.598	0.466
C201	Ramp W-NS	16+609.870	2° 51' 45"	2000.000	49.969	99.917	0.624
C202	Ramp W-NS	16+796.081	2° 51' 45"	2500.000	62.461	124.896	0.780
C203	Fr. Rd. Rt.	16+839.507	5° 30' 29"	606.800	29.190	58.335	0.702
C204	Fr. Rd. Rt.	16+894.214	4° 52' 44"	600.000	25.561	51.092	0.544

FHWA REGION NO.	STATE	PROJECT NO.	YEAR	SHEET NO.	TOTAL SHEETS
7	KANSAS	54-87 K-6657-01	2002	44	1122

- P.O.T. @ Sta. 17+000.000
- Set #4 bar w/cap in median between W. Bd. & Frontage Rd.
  - Set #4 bar w/cap in median between W. Bd. & Frontage Rd.
  - Set #4 bar w/cap in median between W. Bd. & Frontage Rd.
  - Chiseled "1" Top of curb 6.9m N
  - Chiseled "1" Top of curb 2.71m S
  - Chiseled "1" Top of curb 4.93m NE
  - Chiseled "1" Top of curb 4.31m NW

DATE	
BY	
REFERENCES NOTED	
REFERENCES CHECKED	



DSWR: WDH OPER: JGP SCALE: 1:500  
 i:/1997/97362/As-Built/dgn's/Sh 044-pl166dgn Last Rev: 8-6-07 By: gdr

**DESTROYED**  
 BM #27-RR Spike south face light pole NW corner Keith & Kellogg Drive II Access Road, @ Sta. 16+639.552, Elev. 404.628  
**DESTROYED**  
 BM #27A-RR Spike west face light pole NE corner Keith & Dubon @ Sta. 16+691.797, 93.85m Lt. Elev. 405.125

**DESTROYED**  
 BM #27B-RR Spike west face light pole NE corner Westfield & Dubon @ Sta. 16+894.969, 97.02m Lt. Elev. 404.790

No.	Revisions	By	Date

**CITY OF WICHITA**  
**KELLOGG PLAN**  
**STA. 16+600 TO STA. 17+000**  
**SEDGWICK COUNTY**

**Professional Engineering Consultants, P.A.**  
 303 S. TOPEKA • WICHITA, KANSAS 67202  
 316-262-2691 • FAX 316-262-3003

Designed by	WDH	Checked by	
Drawn by	JGP	Date	April, 2002
		Job No.	97362

**RECORD DRAWING**

- UTILITIES**
- Power - K G & E
  - Telephone - Southwestern Bell
  - Gas - Kansas Gas Service
  - Cable TV - Cox Communications
  - Water - City of Wichita Water Dept.
  - San. Sewer - City of Wichita Sewer Dept.