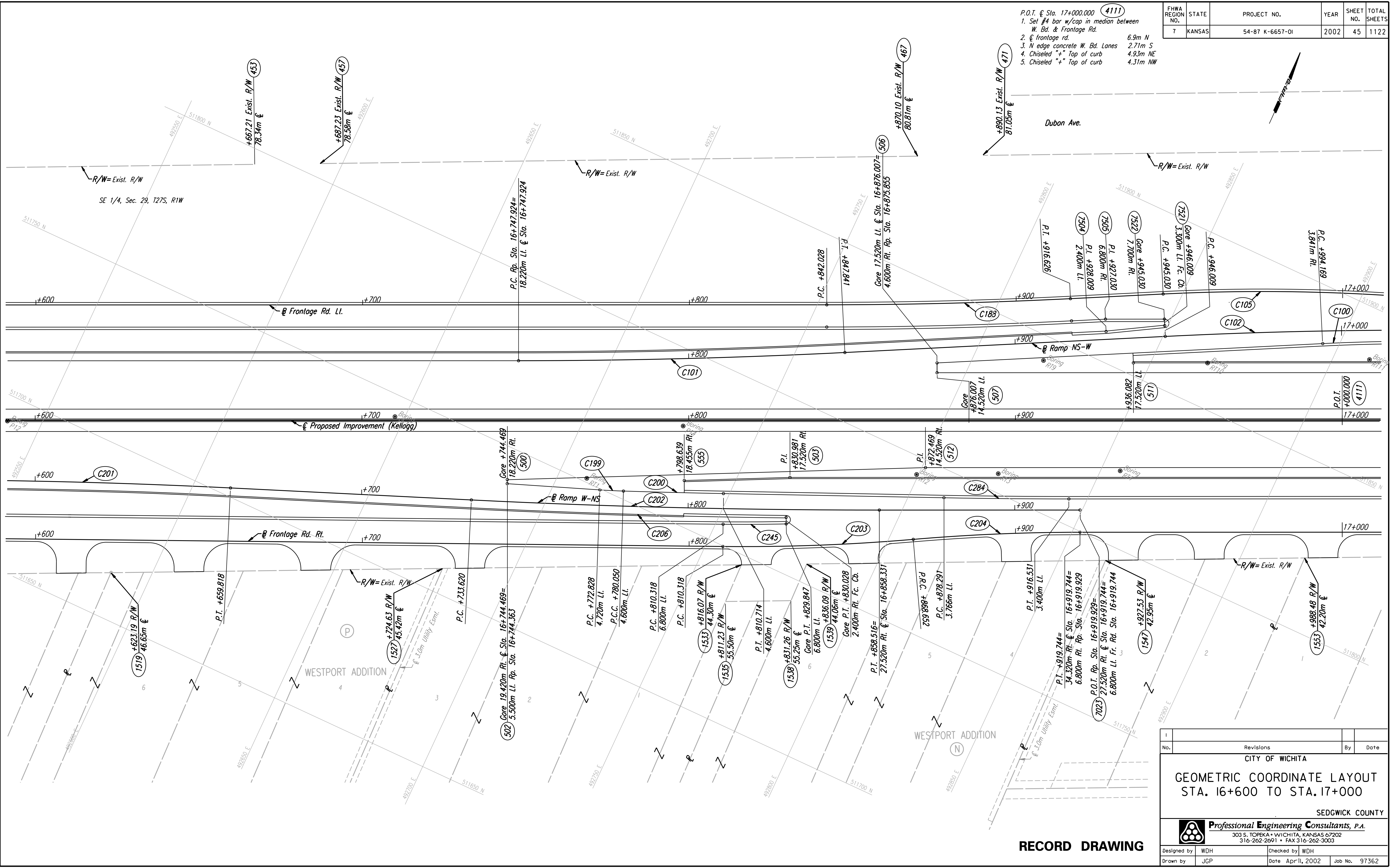


DATE	
BY	
REFERENCES NOTED	
REFERENCES CHECKED	

DSNR: JPS OPER: JGP SCALE: 1:500  
 i:/1997/97362/As-Builts/dgn's/Sh 045-g166dgn Last Rev: 8-6-07 By: gdr

P.O.I. @ Sta. 17+000.000	4111
1. Set #4 bar w/cap in median between W. Bd. & Frontage Rd.	
2. @ frontage rd.	
3. N edge concrete W. Bd. Lanes	6.9m N
4. Chiseled "+" Top of curb	2.71m S
5. Chiseled "+" Top of curb	4.93m NE
	4.31m NW

FHWA REGION NO.	STATE	PROJECT NO.	YEAR	SHEET NO.	TOTAL SHEETS
7	KANSAS	54-87 K-6657-01	2002	45	1122



**RECORD DRAWING**

No.	Revisions	By	Date

CITY OF WICHITA  
 GEOMETRIC COORDINATE LAYOUT  
 STA. 16+600 TO STA. 17+000

SEDGWICK COUNTY

**Professional Engineering Consultants, P.A.**  
 303 S. TOPEKA • WICHITA, KANSAS 67202  
 316-262-2691 • FAX 316-262-3003

Designed by	WDH	Checked by	WDH
Drawn by	JGP	Date	April, 2002
		Job No.	97362