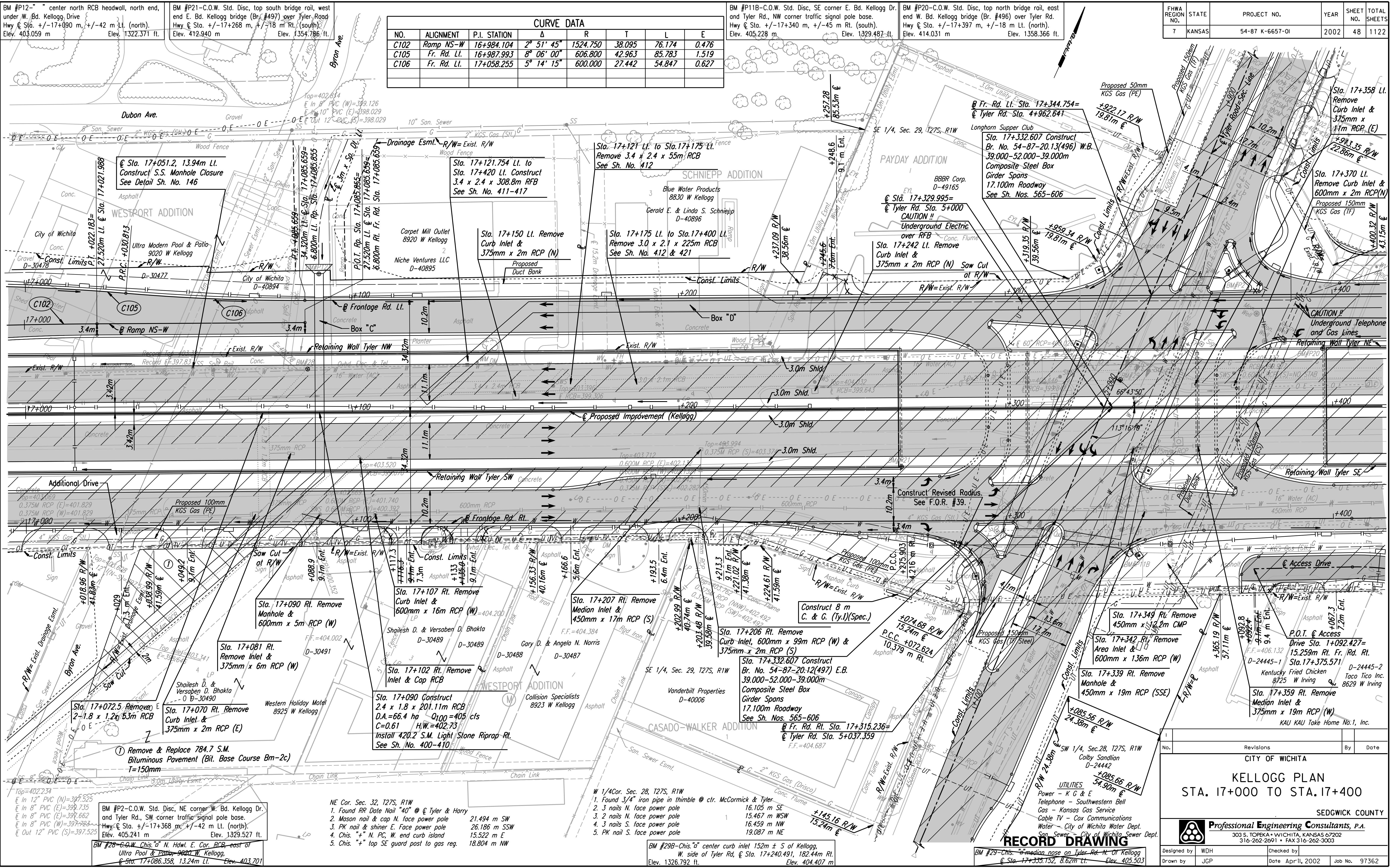


DATE	
BY	
REFERENCES NOTED	
REFERENCES CHECKED	



CURVE DATA						
NO.	ALIGNMENT	P.I. STATION	Δ	R	T	L E
C102	Ramp NS-W	16+984.104	2° 51' 45"	1524.750	38.095	76.174 0.476
C105	Fr. Rd. Lt.	16+987.993	8° 06' 00"	606.800	42.963	85.783 1.519
C106	Fr. Rd. Lt.	17+058.255	5° 14' 15"	600.000	27.442	54.847 0.627

FHWA REGION NO.	STATE	PROJECT NO.	YEAR	SHEET NO.	TOTAL SHEETS
7	KANSAS	54-87 K-6657-01	2002	48	1122

DSNR: WDH OPER: JGP SCALE: 1:500  
 i:/1997/97362/As-Builts/dgn's/Sh 048-pl170.dgn Last Rev: 8-7-07 By: gar

DESTROYED

DESTROYED

No.	Revisions	By	Date

**CITY OF WICHITA**  
**KELLOGG PLAN**  
**STA. 17+000 TO STA. 17+400**  
**SEDGWICK COUNTY**

**Professional Engineering Consultants, P.A.**  
 303 S. TOPEKA • WICHITA, KANSAS 67202  
 316-262-2691 • FAX 316-262-3003

Designed by	WDH	Checked by	
Drawn by	JGP	Date	Apr 11, 2002
		Job No.	97362

BM #P2-C.O.W. Std. Disc, NE corner W. Bd. Kellogg Dr. and Tyler Rd., SW corner traffic signal pole base.  
 Hwy @ Sta. +/-17+368 m, +/-42 m Lt. (north).  
 Elev. 405.241 m Elev. 1329.527 ft.

- NE Cor. Sec. 32, T27S, R1W
- Found RR Date Nail "40" @ Tyler & Harry
  - Mason nail & cap N. face power pole 21.494 m SW
  - PK nail & shiner E. face power pole 26.186 m SSW
  - Chis. "+" N. PC, W. end curb island 15.522 m E
  - Chis. "+" top SE guard post to gas reg. 18.804 m NNW

- W 1/4 Cor. Sec. 28, T27S, R1W
- Found 3/4" iron pipe in thimble @ ctr. McCormick & Tyler 16.105 m SE
  - 3 nails N. face power pole 15.467 m WSW
  - 3 nails N. face power pole 16.459 m NW
  - 3 nails S. face power pole 19.087 m NE

BM #299-Chis. "a" center curb inlet 152m ± S of Kellogg, W. side of Tyler Rd. @ Sta. 17+240.491, 182.44m Rt.  
 Elev. 1326.792 ft. Elev. 404.407 m

BM #299-Chis. "a" median nose on Tyler Rd. N. of Kellogg @ Sta. 17+335.152, 8.62m Lt. Elev. 405.503

**RECORD DRAWING**