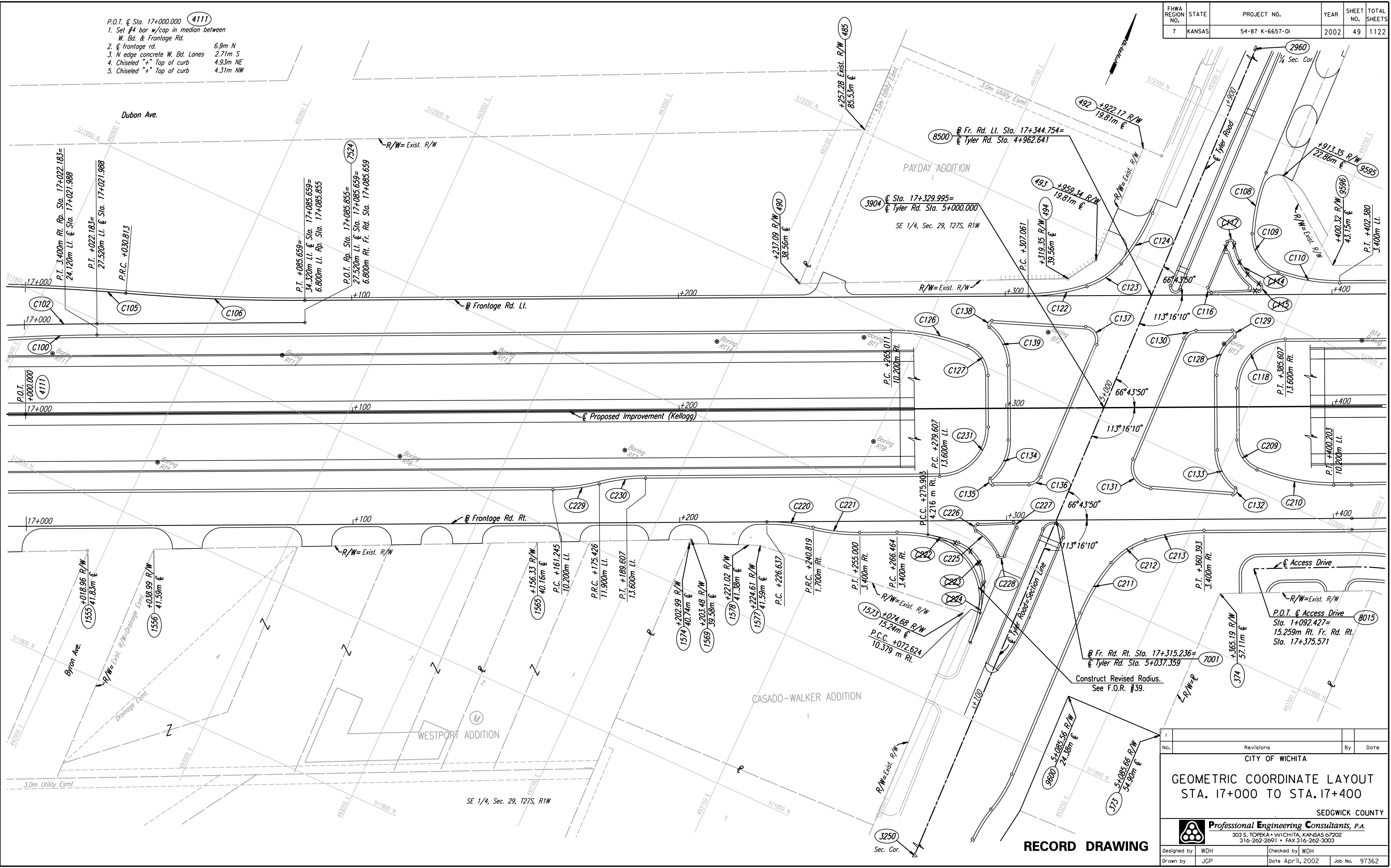


FHWA REGION NO.	STATE	PROJECT NO.	YEAR	SHEET NO.	TOTAL SHEETS
7	KANSAS	54-87 K-6657-01	2002	49	1122

- P.O.T. @ Sta. 17+000.000 (4111)
- Set #4 bar w/cap in median between W. Bd. & Frontage Rd. 6.9m N
  - @ Frontage rd. 2.71m S
  - N edge concrete W. Bd. Lanes 4.93m NE
  - Chiseled "+" Top of curb 4.31m NW
  - Chiseled "+" Top of curb 4.31m NW

DATE	
BY	
REFERENCES NOTED	
REFERENCES CHECKED	



DSNR: JPS OPER: JGP SCALE: 1:500  
 I:/1997/97362/As-Builts/ogn's/Sh 049-g170.dgn Last Rev: 8-7-07 By: gar

CITY OF WICHITA			
GEOMETRIC COORDINATE LAYOUT STA. 17+000 TO STA. 17+400			
SEDGWICK COUNTY			
Professional Engineering Consultants, P.A. 303 S. TOPEKA • WICHITA, KANSAS 67202 316-262-2691 • FAX 316-262-3003			
Designed by	WDH	Checked by	WDH
Drawn by	JGP	Date	April, 2002
		Job No.	97362

**RECORD DRAWING**