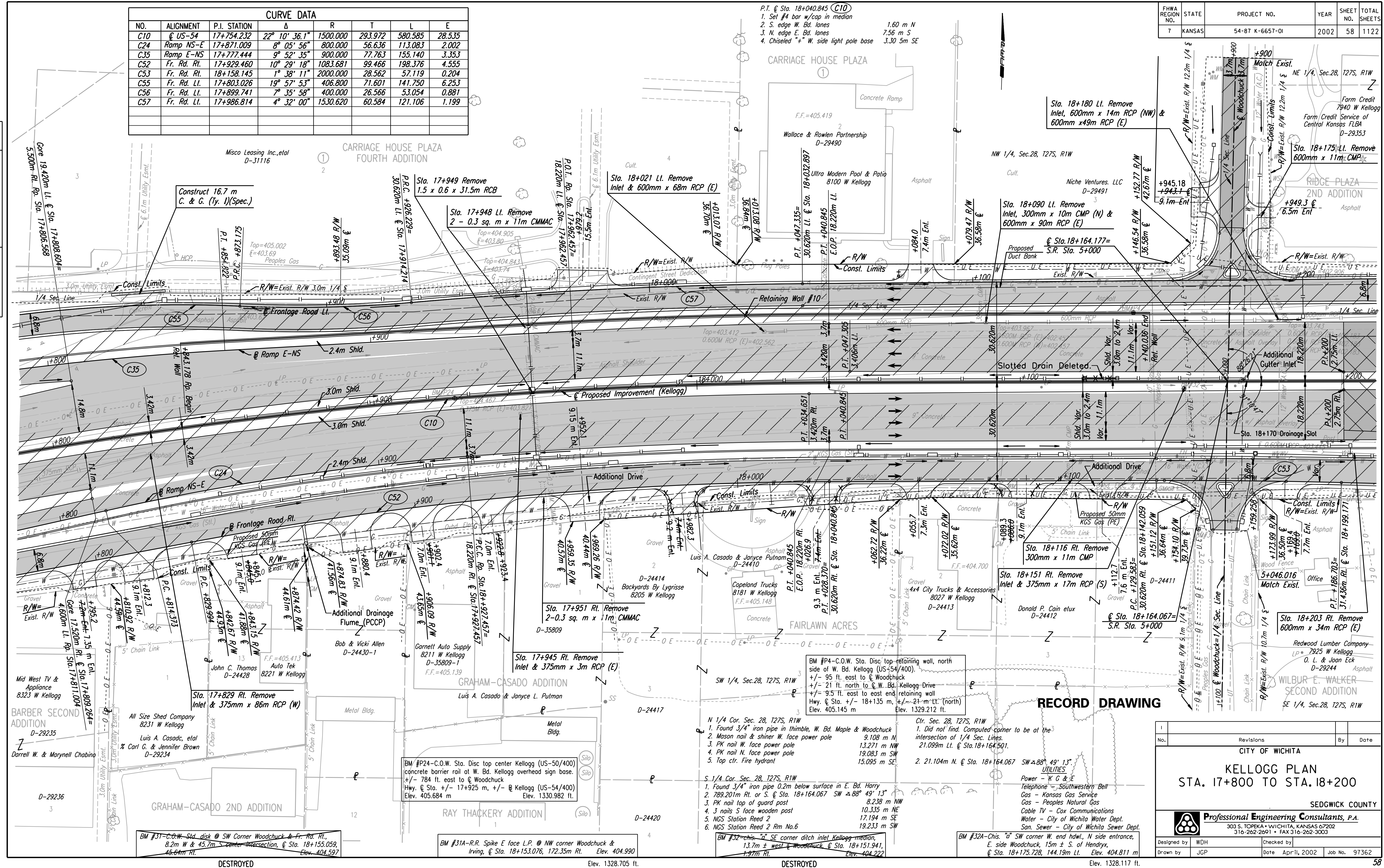


CURVE DATA							
NO.	ALIGNMENT	P.I. STATION	Δ	R	T	L	E
C10	Q US-54	17+754.232	22° 10' 36.1"	1500.000	293.972	580.585	28.535
C24	Ramp NS-E	17+871.009	8° 05' 56"	800.000	56.636	113.083	2.002
C35	Ramp E-NS	17+777.444	9° 52' 35"	900.000	77.763	155.140	3.353
C52	Fr. Rd. Rt.	17+929.460	10° 29' 18"	1083.681	99.466	198.376	4.555
C53	Fr. Rd. Rt.	18+158.145	1° 38' 11"	2000.000	28.562	57.119	0.204
C55	Fr. Rd. Lt.	17+803.026	19° 57' 53"	406.800	71.601	141.750	6.253
C56	Fr. Rd. Lt.	17+899.741	7° 35' 58"	400.000	26.566	53.054	0.881
C57	Fr. Rd. Lt.	17+986.814	4° 32' 00"	1530.620	60.584	121.106	1.199

- P.T. @ Sta. 18+040.845 (C10)
- Set #4 bar w/cap in median
 - S. edge W. Bd. lanes
 - N. edge E. Bd. lanes
 - Chiseled "x" W. side light pole base
- 1.60 m N
7.56 m S
3.30 5m SE

DATE	
BY	
REFERENCES NOTED	
REFERENCES CHECKED	



RECORD DRAWING

- BM #P4-C.O.W. Sta. Disc top retaining wall, north side of W. Bd. Kellogg (US-54/400).**
 +/- 95 ft. east to @ Woodchuck
 +/- 21 ft. north to @ W. Bd. Kellogg Drive
 +/- 9.5 ft. east to east end retaining wall Hwy. @ Sta. +/- 18+135 m, +/- 21-m "LT." (north) Elev. 405.145 m
- Center of Sec. 28, T27S, R1W**
 1. Did not find. Computed corner to be at the intersection of 1/4 Sec. Lines.
 21.099m Lt. @ Sta. 18+164.501.
 2. 21.104m N. @ Sta. 18+164.067 SW $\Delta 88^\circ 49' 13''$
- UTILITIES**
 Power - K & E
 Telephone - Southwestern Bell
 Gas - Kansas Gas Service
 Gas - Peoples Natural Gas
 Cable TV - Cox Communications
 Water - City of Wichita Water Dept.
 San. Sewer - City of Wichita Sewer Dept.
- N 1/4 Cor. Sec. 28, T27S, R1W**
 1. Found 3/4" iron pipe in thimble, W. Bd. Maple & Woodchuck 9.108 m N
 2. Mason nail & shiner w. face power pole 13.271 m NW
 3. PK nail W. face power pole 19.083 m SW
 4. PK nail N. face power pole 15.095 m SE
 5. Top ctr. Fire hydrant
- S 1/4 Cor. Sec. 28, T27S, R1W**
 1. Found 3/4" iron pipe 0.2m below surface in E. Bd. Harry 8.238 m NW
 2. 789.201m Rt. or S. @ Sta. 18+164.067 SW $\Delta 88^\circ 49' 13''$ 10.335 m NE
 3. PK nail top of guard post 17.194 m SE
 4. 3 nails S. face wooden post 19.233 m SW
 5. NGS Station Reed 2
 6. NGS Station Reed 2 Rm No.6
- BM #32-chis. "x" SE corner ditch inlet Kellogg median, 13.7m \pm west @ Woodchuck @ Sta. 18+151.941, +/- 9.7m Rt. Elev. 404.222**
- BM #32A-Chis. "x" SW corner W. end hdwl., N side entrance, E. side Woodchuck, 15m \pm S. of Hendryx, @ Sta. 18+175.228, 144.19m Lt. Elev. 404.811 m**

No.	Revisions	By	Date

CITY OF WICHITA

KELLOGG PLAN
STA. 17+800 TO STA. 18+200

SEDGWICK COUNTY

Professional Engineering Consultants, P.A.
 303 S. TOPEKA • WICHITA, KANSAS 67202
 316-262-2691 • FAX 316-262-3003

Designed by	WDH	Checked by	
Drawn by	JGP	Date	Apr 11, 2002
		Job No.	97362

DSNR: WDH OPER: JGP SCALE: 1:500
 1/1997/97362/PL178-182.DCN 11-19-1999 14:46:26 LAST REV: 2-1-2002 BY: svb

DESTROYED

DESTROYED