

RIDGE PLAZA 6TH ADDITION  
Farm Credit Service of Central Kansas FLBA  
D-31469

D. Keith Leshar  
D-29354

NE 1/4, Sec. 28, T27S, R1W

Michael Bahmaier  
D-29980

Harley Davidson  
7800 W Kellogg  
F.F.=404.470

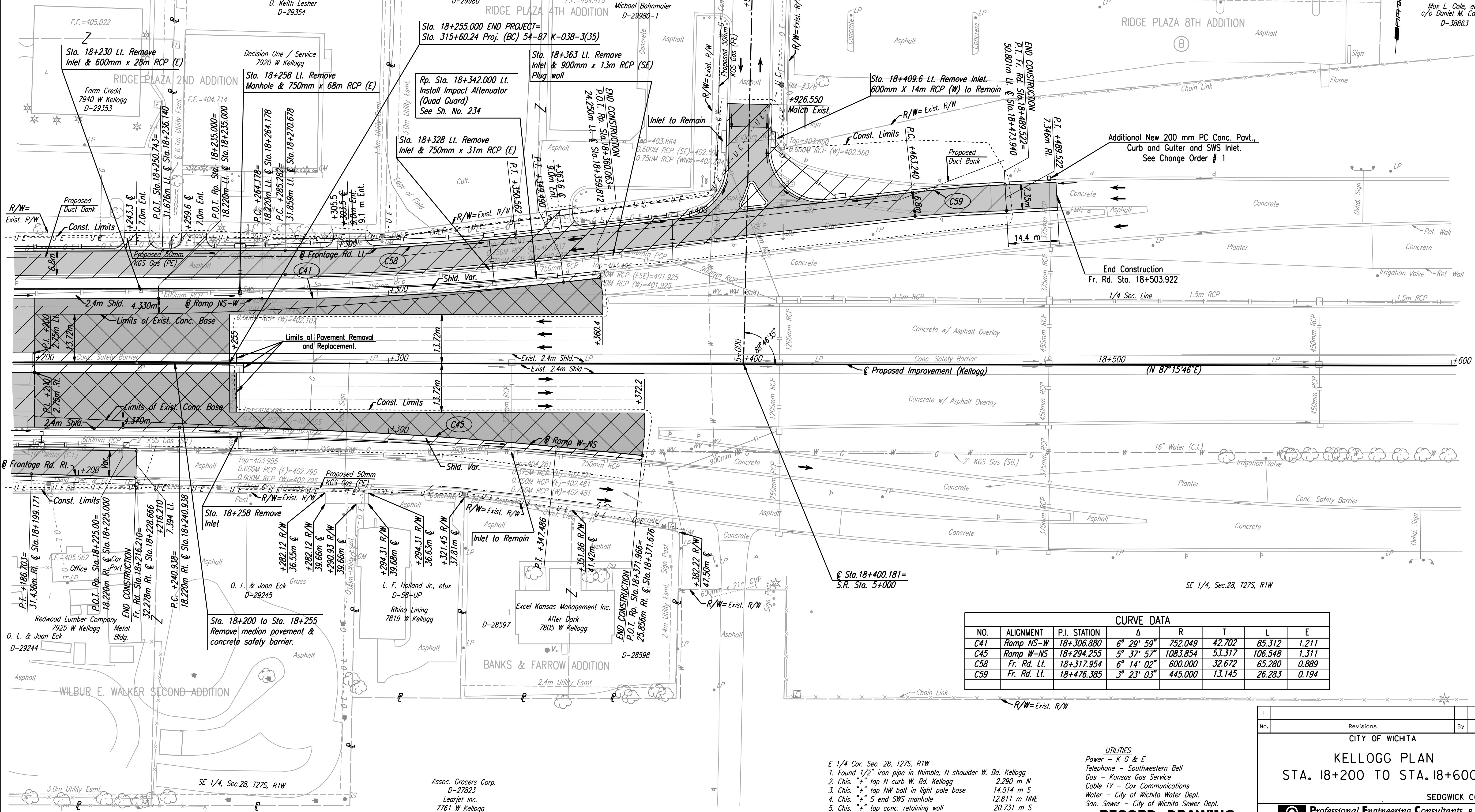
Michael Bahmaier  
D-29980-1

Ridge Plaza Inn, Inc.  
D-38864

RIDGE PLAZA 8TH ADDITION

Max L. Cole, et al  
c/o Daniel M. Carney  
D-38863

DATE	BY	REFERENCES NOTED	REFERENCES CHECKED



NO.	ALIGNMENT	P.I. STATION	Δ	R	T	L	E
C41	Ramp NS-W	18+306.880	6° 29' 59"	752.049	42.702	85.312	1.211
C45	Ramp W-NS	18+294.255	5° 37' 57"	1083.854	53.317	106.548	1.311
C58	Fr. Rd. Lt.	18+317.954	6° 14' 02"	600.000	32.672	65.280	0.889
C59	Fr. Rd. Lt.	18+476.385	3° 23' 03"	445.000	13.145	26.283	0.194

- E 1/4 Cor. Sec. 28, T27S, R1W
- Found 1/2" iron pipe in thimble, N shoulder W. Bd. Kellogg 2.290 m N
  - Chis. "+" top N curb W. Bd. Kellogg 14.514 m S
  - Chis. "+" top NW bolt in light pole base 12.811 m NNE
  - Chis. "+" S end SWS manhole 20.731 m S
  - Chis. "+" top conc. retaining wall

UTILITIES  
Power - K & E  
Telephone - Southwestern Bell  
Gas - Kansas Gas Service  
Cable TV - Cox Communications  
Water - City of Wichita Water Dept.  
San. Sewer - City of Wichita Sewer Dept.

**RECORD DRAWING**

BM #328-RR Spike west face power pole E. Side Holland, 1st pole N. of Kellogg Drive N. access road, @ Sta. 18+410.694, 78.81m Lt. Elev. 1326.976 ft. Elev. 404.463 m

BM #33-3" cut in top conc. median wall @ W end median wall taper, W of Ridge Rd., @ Sta. 18+664.933, 0.26m Lt. Elev. 1327.563 ft. Elev. 404.642 m

DSNR: WDH OPER: JGP SCALE: 1:500  
 i:/1997/97362/As-Builts/dgn/s/Sh\_061-pl182.dgn Last Rev: 8-8-07 By: gdr

No.	Revisions	By	Date

CITY OF WICHITA

**KELLOGG PLAN**  
STA. 18+200 TO STA. 18+600

SEDGWICK COUNTY

**Professional Engineering Consultants, P.A.**  
303 S. TOPEKA • WICHITA, KANSAS 67202  
316-262-2691 • FAX 316-262-3003

Designed by	WDH	Checked by	
Drawn by	JGP	Date	Apr 11, 2002
		Job No.	97362