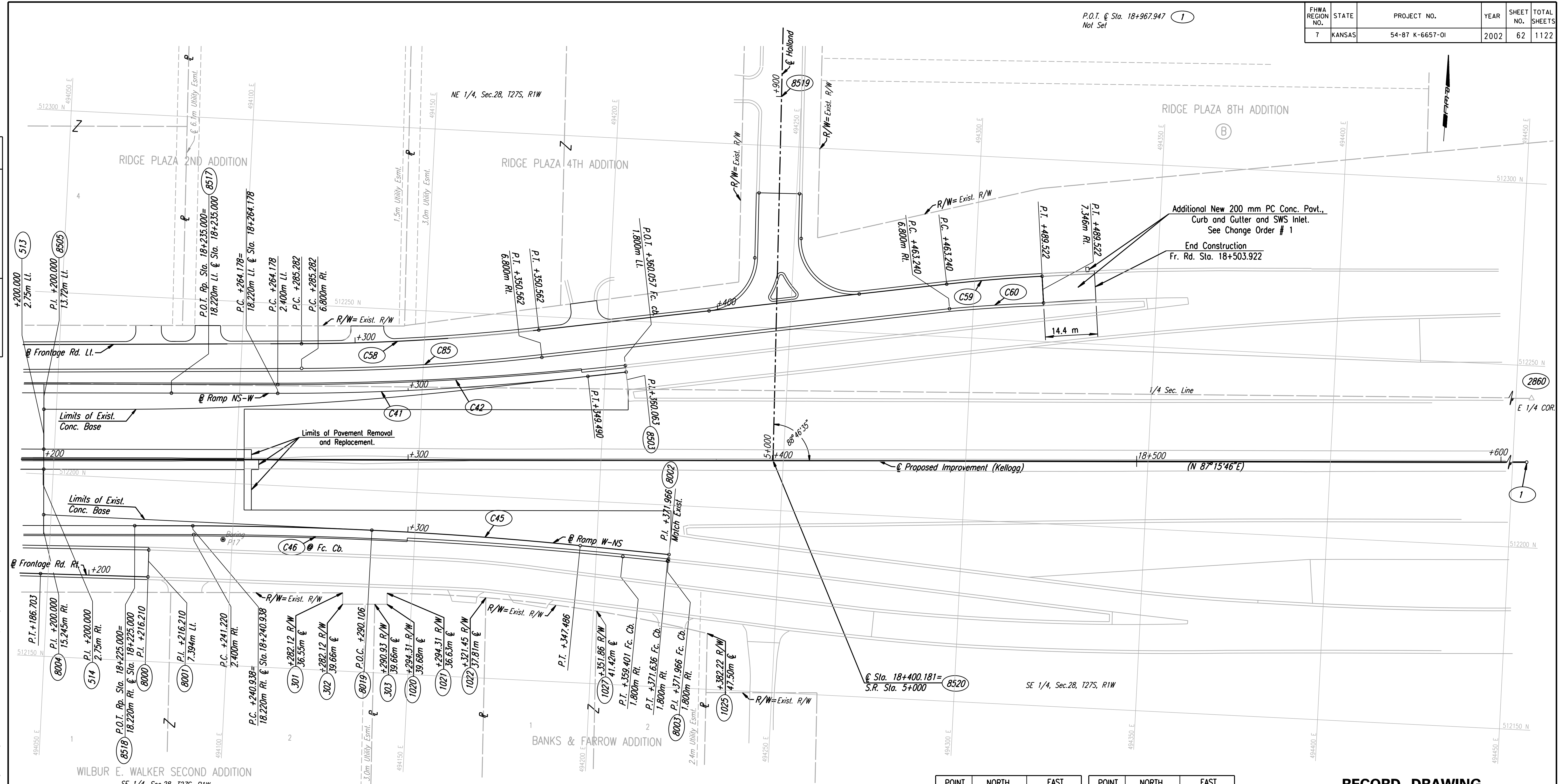


P.O.T. @ Sta. 18+967.947  
Not Set

FHWA REGION NO.	STATE	PROJECT NO.	YEAR	SHEET NO.	TOTAL SHEETS
7	KANSAS	54-87 K-6657-01	2002	62	1122

DATE	
BY	
REFERENCES NOTED	
REFERENCES CHECKED	



Additional New 200 mm PC Conc. Pavt.,  
Curb and Gutter and SWS Inlet.  
See Change Order # 1  
End Construction  
Fr. Rd. Sta. 18+503.922

POINT NO.	NORTH COORDINATE	EAST COORDINATE
1	512240.749	494814.311
301	512171.490	494131.013
302	512168.384	494131.161
303	512168.803	494139.960
513	512206.822	494047.109
514	512201.328	494047.372
1020	512168.948	494143.341
1021	512171.993	494143.195
1022	512172.104	494170.354
1025	512165.331	494231.518
1027	512169.950	494200.901
2860	512255.525	494813.911
8000	512173.202	494077.415
8001	512180.595	494077.273
8002	512186.447	494219.955

POINT NO.	NORTH COORDINATE	EAST COORDINATE
8003	512184.650	494219.864
8004	512188.847	494047.968
8019	512189.064	494138.149
8503	512235.930	494205.712
8505	512218.276	494046.561
8507	512267.900	494318.441
8517	512223.946	494081.330
8518	512187.070	494073.082
8519	512313.600	494244.552
8520	512213.635	494247.193

CURVE NO.	P.C. COORDINATES		P.I. COORDINATES		P.T. COORDINATES		C.C. COORDINATES	
	NORTH	EAST	NORTH	EAST	NORTH	EAST	NORTH	EAST
C41	512225.339	494110.475	512227.378	494153.128	512234.233	494195.276	512976.530	494074.561
C42	512227.736	494110.361	512230.022	494158.172	512237.705	494205.417	513069.774	494070.102
C45	512187.831	494089.001	512190.377	494142.257	512187.684	494195.506	511105.214	494140.762
C46	512185.447	494089.397	512188.266	494148.360	512185.284	494207.316	510986.816	494146.704
C58	512239.273	494116.316	512241.006	494148.942	512246.272	494181.187	512838.428	494084.487
C59	512264.432	494292.392	512266.551	494305.365	512267.900	494318.441	511825.249	494364.111
C60	512257.721	494293.488	512259.536	494306.299	512260.592	494319.195	511823.855	494354.966
C85	512232.483	494116.677	512234.236	494149.672	512239.561	494182.283	512838.428	494084.487

NO.	ALIGNMENT	P.I. STATION	CURVE DATA				
			Δ	R	T	E	
C41	Ramp NS-W	18+306.880	6° 29' 59"	752.049	42.702	85.312	1.211
C42	Ramp NS-W	18+294.255	5° 29' 59"	843.000	47.866	95.629	1.358
C45	Ramp W-NS	18+294.255	5° 37' 57"	1083.854	53.317	106.548	1.311
C46	Ramp W-NS	18+294.255	5° 37' 57"	1200.000	59.031	117.966	1.451
C58	Fr. Rd. Lt.	18+317.954	6° 14' 02"	600.000	32.672	65.280	0.889
C59	Fr. Rd. Lt.	18+476.385	3° 23' 03"	445.000	13.145	26.283	0.194
C60	Fr. Rd. Lt.	18+476.385	3° 22' 58"	438.200	12.939	25.871	0.191
C85	Fr. Rd. Lt.	18+317.954	6° 14' 02"	606.800	33.042	66.020	0.899

**RECORD DRAWING**

CITY OF WICHITA			
GEOMETRIC COORDINATE LAYOUT STA. 18+200 TO STA. 18+600			
SEDGWICK COUNTY			
Professional Engineering Consultants, P.A. 303 S. TOPEKA • WICHITA, KANSAS 67202 316-262-2691 • FAX 316-262-3003			
Designed by	WDH	Checked by	WDH
Drawn by	JGP	Date	April, 2002
		Job No.	97362

DSNR: JPS OPER: JGP SCALE: 1:500  
i:/1997/97362/As-Builts/dgn's/5h 062-g182.dgn Last Rev: 8-8-07 By: gdr