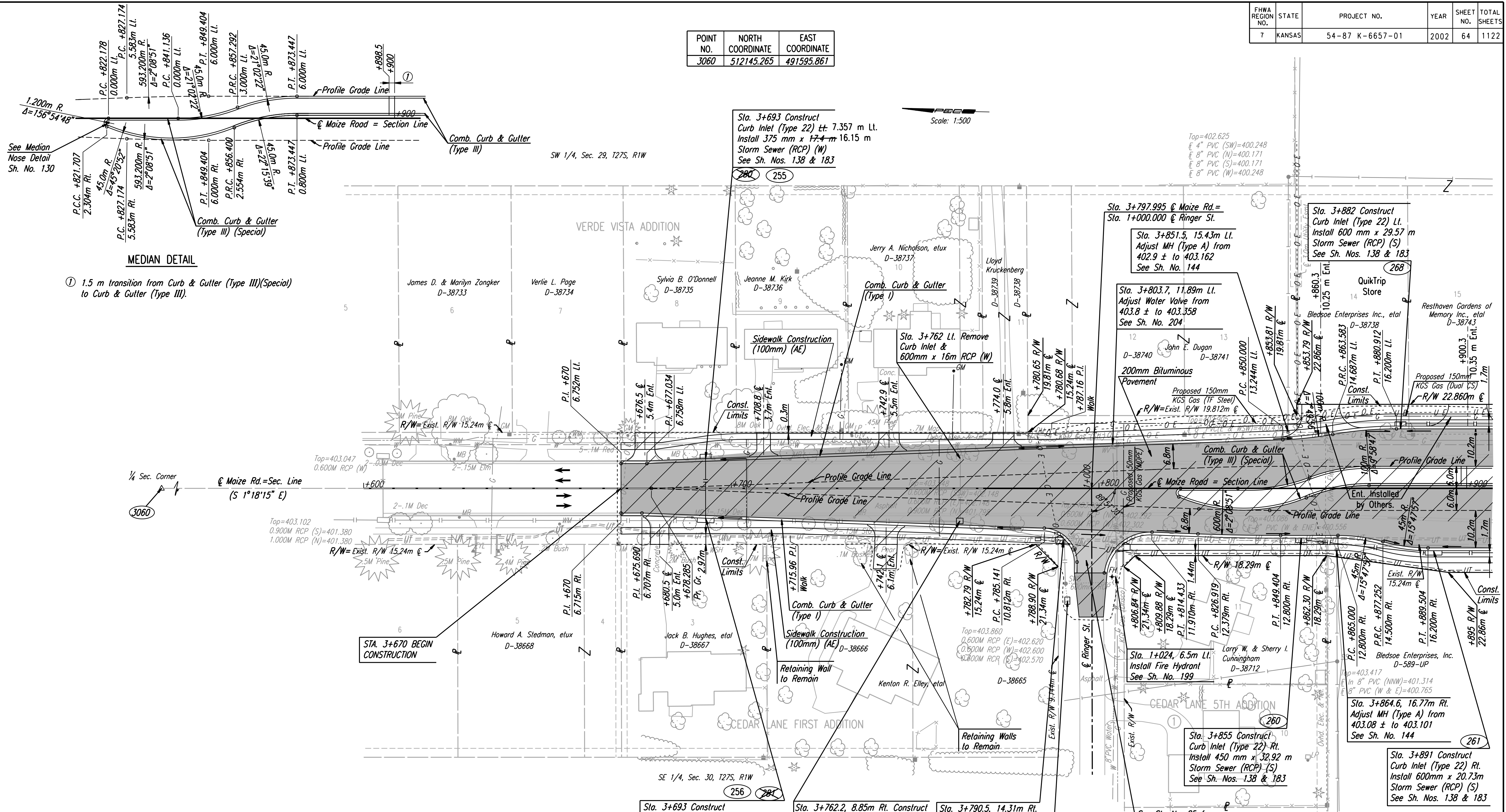


FHWA REGION NO.	STATE	PROJECT NO.	YEAR	SHEET NO.	TOTAL SHEETS
7	KANSAS	54-87 K-6657-01	2002	64	1122

POINT NO.	NORTH COORDINATE	EAST COORDINATE
3060	512145.265	491595.861

DATE	
BY	
REFERENCES NOTED	
REFERENCES CHECKED	



**MEDIAN DETAIL**

① 1.5 m transition from Curb & Gutter (Type III)(Special) to Curb & Gutter (Type III).

- W 1/4 Cor. Sec. 29, T27S, R1W  
 @ Maize Rd. Sta. 3+240.667
- Found 3/4" iron pipe in thimble, center Maize Road 14.791m NNW
  - 3 nails east face power pole 19.852m NW
  - Chis. "+" top of guard post 16.143m ENE
  - Nail/shiner north face power pole 46.137m S
  - North edge wearing surface bridge over Cowskin

DSNR: WDH OPER: JGP SCALE: 1:500  
 k:\1997\97362\As-Builts\ dgn's\Sh 064-Maize-pl3670.dgn Last Rev: 8-8-07 By: gdr

DESTROYED  
 BM #24A-Chis. "+" top west curb return NW corner Maize Rd. & Ringer. Elev. 403.999

UTILITIES  
 Power - K G E  
 Telephone - Southwestern Bell  
 Gas - Kansas Gas Service  
 Cable TV - Cox Communications  
 Water - City of Wichita Water Dept.  
 San. Sewer - City of Wichita Sewer Dept.

**RECORD DRAWING**

No.	Revisions	By	Date

CITY OF WICHITA  
**MAIZE ROAD**  
 STA. 3+670 TO STA. 3+900

SEDGWICK COUNTY

**Professional Engineering Consultants, P.A.**  
 303 S. TOPEKA • WICHITA, KANSAS 67202  
 316-262-2691 • FAX 316-262-3003

Designed by	RCH	Checked by	WDH
Drawn by	JGP	Date	Apr 11, 2002
		Job No.	97362