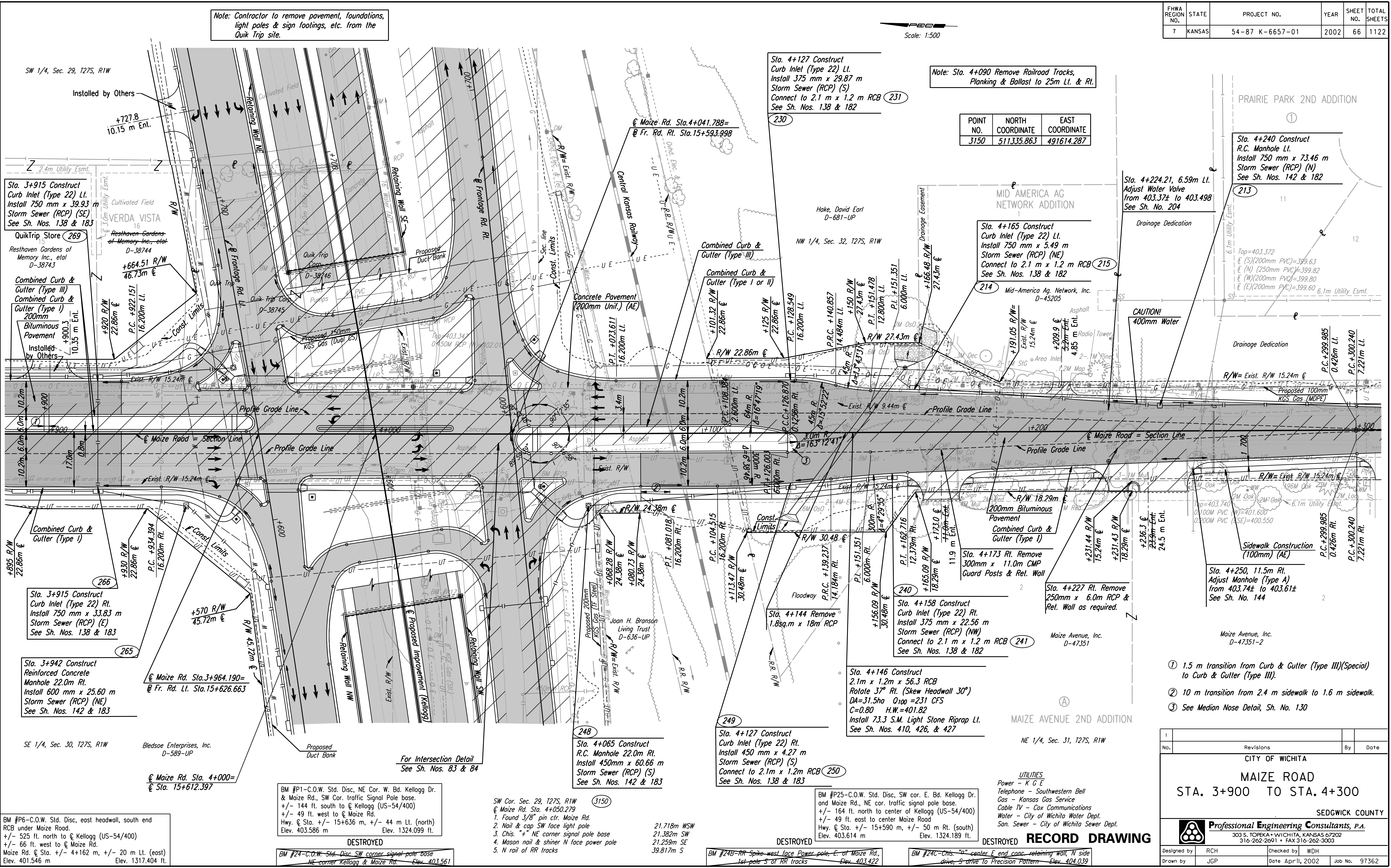


Note: Contractor to remove pavement, foundations, light poles & sign footings, etc. from the Quik Trip site.

Scale: 1:500

FHWA REGION NO.	STATE	PROJECT NO.	YEAR	SHEET NO.	TOTAL SHEETS
7	KANSAS	54-87 K-6657-01	2002	66	1122

DATE	
BY	
REFERENCES NOTED	
REFERENCES CHECKED	



Note: Sta. 4+090 Remove Railroad Tracks, Planking & Ballast to 25m Lt. & Rt.

POINT NO.	NORTH COORDINATE	EAST COORDINATE
3150	511335.863	491614.287

PRAIRIE PARK 2ND ADDITION

Sta. 4+240 Construct R.C. Manhole Lt. Install 750 mm x 73.46 m Storm Sewer (RCP) (N) See Sh. Nos. 142 & 182

Sta. 4+165 Construct Curb Inlet (Type 22) Lt. Install 750 mm x 5.49 m Storm Sewer (RCP) (NE) Connect to 2.1 m x 1.2 m RCB See Sh. Nos. 138 & 182

Sta. 4+224.21, 6.59m Lt. Adjust Water Valve from 403.37± to 403.49± See Sh. No. 204

Top=403.372  
 E (S)(200mm PVC)=399.63  
 E (N) (250mm PVC)=399.82  
 E (W)(200mm PVC)=399.80  
 E (E)(200mm PVC)=399.60 6.1m Utility Esmt.

CAUTION! 400mm Water

Sta. 4+250, 11.5m Rt. Adjust Manhole (Type A) from 403.74± to 403.61± See Sh. No. 144

- ① 1.5 m transition from Curb & Gutter (Type III)(Special) to Curb & Gutter (Type III).
- ② 10 m transition from 2.4 m sidewalk to 1.6 m sidewalk.
- ③ See Median Nose Detail, Sh. No. 130

MAIZE AVENUE 2ND ADDITION

Sta. 4+173 Rt. Remove 300mm x 11.0m CMP Guard Posts & Ret. Wall

Sta. 4+158 Construct Curb Inlet (Type 22) Rt. Install 375 mm x 22.56 m Storm Sewer (RCP) (NW) Connect to 2.1 m x 1.2 m RCB See Sh. Nos. 138 & 182

Sta. 4+146 Construct 2.1m x 1.2m x 56.3 RCB Rotate 37° Rt. (Skew Headwall 30°) DA=31.5ha Q100=231 CFS C=0.80 H.W.=401.82 Install 73.3 S.M. Light Stone Riprap Lt. See Sh. Nos. 410, 426, & 427

Sta. 4+127 Construct Curb Inlet (Type 22) Rt. Install 450 mm x 4.27 m Storm Sewer (RCP) (S) Connect to 2.1m x 1.2m RCB See Sh. Nos. 138 & 183

Sta. 4+065 Construct R.C. Manhole 22.0m Rt. Install 450mm x 60.66 m Storm Sewer (RCP) (S) See Sh. Nos. 142 & 183

Sta. 3+915 Construct Curb Inlet (Type 22) Lt. Install 750 mm x 39.93 m Storm Sewer (RCP) (SE) See Sh. Nos. 138 & 183

Combined Curb & Gutter (Type I) 200mm Bituminous Pavement Installed by Others

Sta. 3+915 Construct Curb Inlet (Type 22) Rt. Install 750 mm x 33.83 m Storm Sewer (RCP) (E) See Sh. Nos. 138 & 183

Sta. 3+942 Construct Reinforced Concrete Manhole 22.0m Rt. Install 600 mm x 25.60 m Storm Sewer (RCP) (NE) See Sh. Nos. 142 & 183

- SW Cor. Sec. 29, T27S, R1W @ Maize Rd. Sta. 4+050.279
- Found 3/8" pin ctr. Maize Rd.
  - Nail & cap SW face light pole
  - Chis. "+" NE corner signal pole base
  - Mason nail & shiner N face power pole
  - N rail of RR tracks

BM #P1-C.O.W. Std. Disc, NE Cor. W. Bd. Kellogg Dr. & Maize Rd., SW Cor. traffic Signal Pole base. +/- 144 ft. south to @ Kellogg (US-54/400) +/- 49 ft. west to @ Maize Rd. Hwy. @ Sta. +/- 15+636 m, +/- 44 m Lt. (north) Elev. 403.586 m Elev. 1324.099 ft.

BM #24-C.O.W. Std. Disc SW corner signal pole base NE corner Kellogg & Maize Rd. Elev. 403.561

BM #P6-C.O.W. Std. Disc, east headwall, south end RCB under Maize Road. +/- 525 ft. north to @ Kellogg (US-54/400) +/- 66 ft. west to @ Maize Rd. Maize Rd. @ Sta. +/- 4+162 m, +/- 20 m Lt. (east) Elev. 401.546 m Elev. 1317.404 ft.

UTILITIES  
 Power - K G E  
 Telephone - Southwestern Bell  
 Gas - Kansas Gas Service  
 Cable TV - Cox Communications  
 Water - City of Wichita Water Dept.  
 San. Sewer - City of Wichita Sewer Dept.

DESTROYED RECORD DRAWING

CITY OF WICHITA			
MAIZE ROAD			
STA. 3+900 TO STA. 4+300			
SEDGWICK COUNTY			
Professional Engineering Consultants, P.A.			
303 S. TOPEKA • WICHITA, KANSAS 67202			
316-262-2691 • FAX 316-262-3003			
Designed by	RCH	Checked by	WDH
Drawn by	JGP	Date	April, 2002
		Job No.	97362

DSNR: WDH OPER: JGP SCALE: 1:500  
 I:/1997/97362/As-Builts/dgn s/Sh 066-Maize-pl3900.dgn Last Rev: 8-8-07 By: gdr