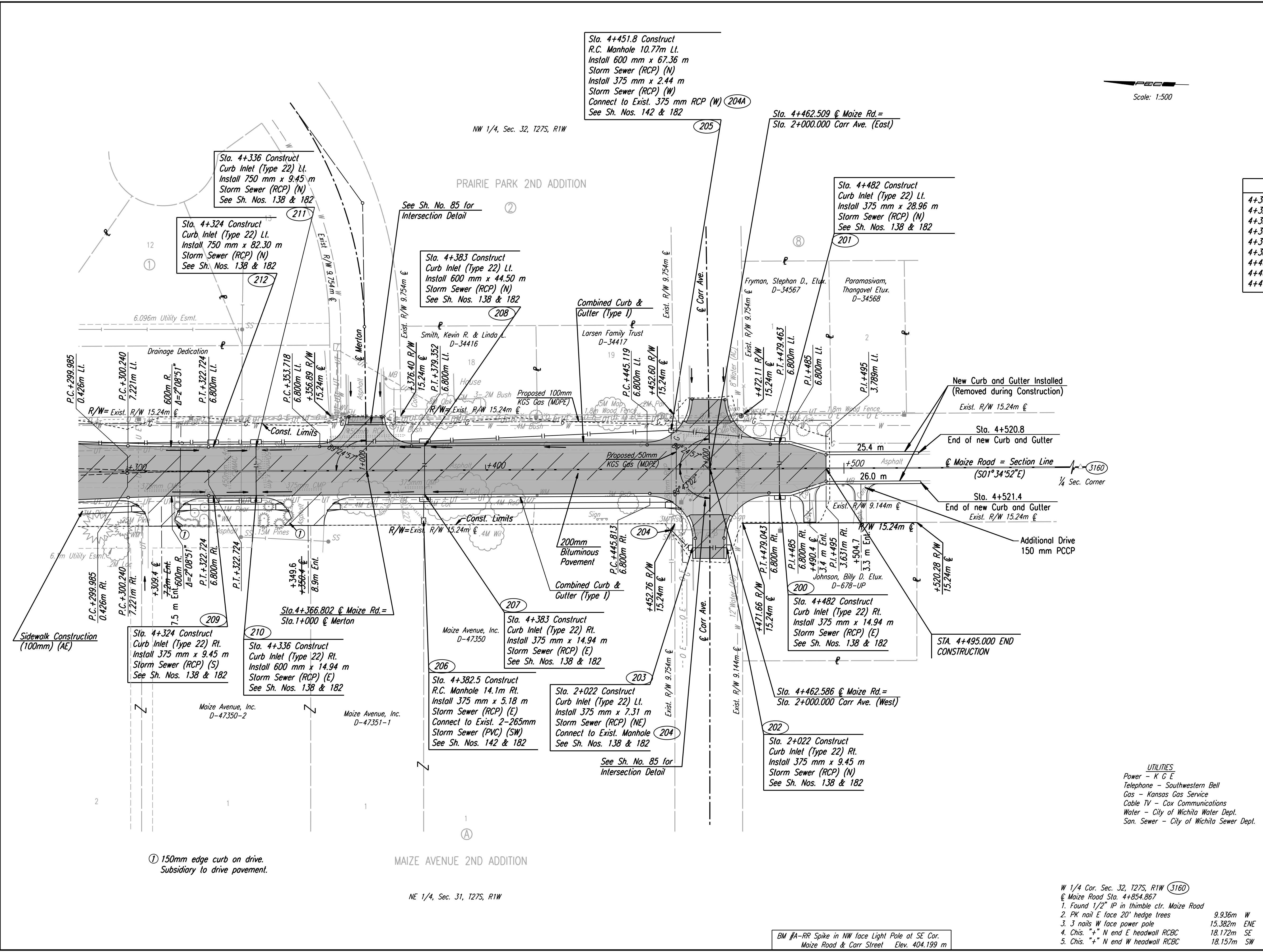


FHWA REGION NO.	STATE	PROJECT NO.	YEAR	SHEET NO.	TOTAL SHEETS
7	KANSAS	54-87 K-6657-01	2002	68	1122

DATE	
BY	
REFERENCES NOTED	
REFERENCES CHECKED	

Scale: 1:500

DSNR: WDH OPER: JGP SCALE: 1:500  
 I:\1997\97362\As-Builts\ dgn's\Sh 068-Maize-pl3900.dgn Last Rev: 8-8-07 By: gdr



Removal of Existing Structures

4+309.5, 5.1m Rt., 375mm x 9.2m CMP
4+328.4, 0.4 sq. m x 13.9m CMMAC
4+338.4, 0.4 sq. m x 13.9m CMMAC
4+366.8, 9.5m Lt., 450mm x 20.8m RCP
4+375.4, 6.5m Rt., Headwall & 10.5m PVC Pipe
4+381.2, 4.5m Rt., 375mm x 7.4m CMP
4+462.5, 9.0m Lt., 450mm x 15.4m CMP
4+462.6, 17.0m Rt., 12" x 8.8m RCP & 2 Curb Inlets
4+472, 375mm x 12.6 m CMP

POINT NO.	NORTH COORDINATE	EAST COORDINATE
3160	510531.581	491636.486

① 150mm edge curb on drive. Subsidiary to drive pavement.

UTILITIES  
 Power - K G E  
 Telephone - Southwestern Bell  
 Gas - Kansas Gas Service  
 Cable TV - Cox Communications  
 Water - City of Wichita Water Dept.  
 San. Sewer - City of Wichita Sewer Dept.

RECORD DRAWING

No.		Revisions	By	Date
CITY OF WICHITA				
MAIZE ROAD STA. 4+300 TO STA. 4+495				
SEDGWICK COUNTY				
Professional Engineering Consultants, P.A.				
303 S. TOPEKA • WICHITA, KANSAS 67202 316-262-2691 • FAX 316-262-3003				
Designed by	RCH	Checked by	WDH	
Drawn by	JGP	Date	Apr 11, 2002	Job No. 97362

BM #A-RR Spike in NW face Light Pole at SE Cor. Maize Road & Carr Street Elev. 404.199 m Elev. 1326.110 ft.