

FHWA REGION NO.	STATE	PROJECT NO.	YEAR	SHEET NO.	TOTAL SHEETS
7	KANSAS	54-87 K-6652-01	2002	70	1122

Bill E. Mesker, Living Trust  
D-31101-1

2960  
P.I. Tyler Rd. Sta. 4+808.331=  
W 1/4 Cor. Sec. 28, T27S, R1W  
1. Found 3/4" iron pipe in thimble @ ctr. McCormick & Tyler  
2. 3 nails N. face power pole 16.105m SE  
3. 2 nails N. face power pole 15.467m WSW  
4. 3 nails S. face power pole 16.459m NW  
5. PK nail S. face power pole 19.087m NE

Sta. 4+812.924 Construct  
Curb Inlet (Type 22) (Radius) 19.563m Lt.  
Install 450mm x 5.79m  
Storm Sewer (RCP)(NE) with  
450mm x 1.22m RCP Elbow (20° Deflection)  
Connect to Exist. 450mm RCP (151)  
See Sh. Nos. 137 & 182

Revise Curb Inlet to a "Grate Inlet"  
(Flush with Pavement).  
See Change Order #3.

**Removal of Existing Structures**

4+815, 18.5m Lt., Curb Inlet  
4+815, 18.0m Lt. T.S. Pole  
4+817, 17.0m Lt. T.S. MH.  
4+855, 11.0m Lt. T.S. MH.  
4+875, 11.0m Lt. Curb Inlet

POINT NO.	NORTH COORDINATE	EAST COORDINATE
2900	512168.465	492398.578
2950	512999.573	493183.937
2960	512195.313	493204.372

DATE	
BY	
REFERENCES NOTED	
REFERENCES CHECKED	

Note:  
Existing Base remains in-place.  
Holes cut to receive new SWS RCP.  
See Change Order #2.

Sta. 4+874.8, 10.7 m Lt. Construct  
Reinf. Concrete Manhole  
Connect to Exist. 450mm RCP (W) &  
to Exist. 375mm PVC (SE)  
See Sh. Nos. 142 & 181

Sta. 4+897 Construct  
Curb Inlet (Type 22) Lt.  
Install 375mm x 22.25m  
Storm Sewer (RCP)(NW)  
See Sh. Nos. 138 & 181

Sta. 4+860 Construct  
Curb Inlet (Type 22) Lt.  
Install 375mm x 16.15m  
Storm Sewer (RCP)(SW)  
See Sh. Nos. 138 & 181

Sta. 4+816 Adjust  
2 Water Valves Lt.  
See Sh. No. 204

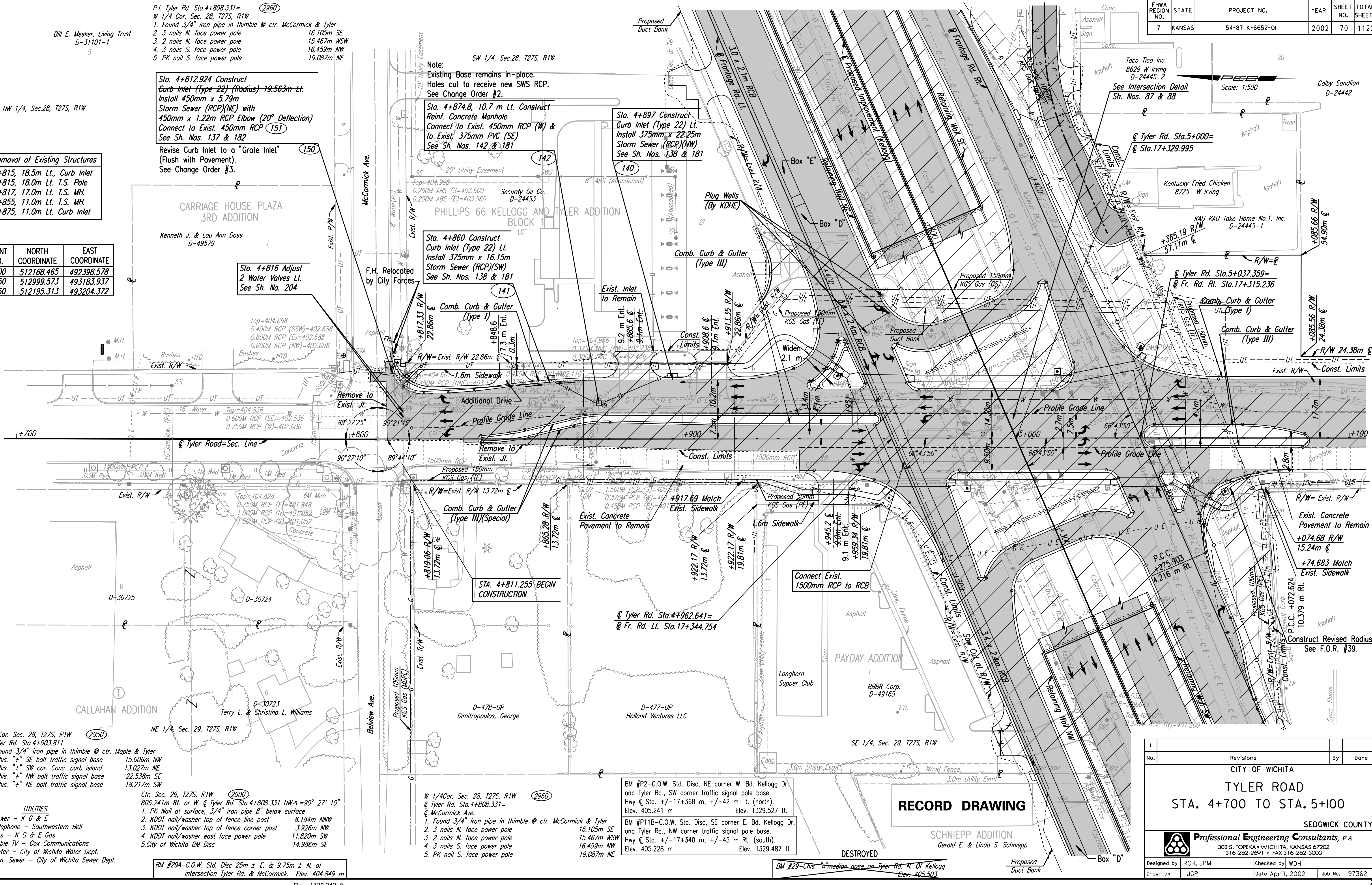
Comb. Curb & Gutter  
(Type I)  
+817.33 R/W  
22.86m  
+848.6  
7.3 m Ent.  
0.5m

Exist. Inlet  
to Remain  
9.2 m Ent.  
+865.6  
9.1m Ent.  
9.1m Ent.

Const. Limits  
+908.6  
9.1m Ent.  
+913.35 R/W  
22.86m

Comb. Curb & Gutter  
(Type III)  
+085.66 R/W  
54.90m

Comb. Curb & Gutter  
(Type III)  
+085.56 R/W  
24.38m  
R/W 24.38m



NW Cor. Sec. 28, T27S, R1W  
@ Tyler Rd. Sta. 4+003.811  
1. Found 3/4" iron pipe in thimble @ ctr. Maple & Tyler  
2. Chis. "+ SE bolt traffic signal base 13.006m NW  
3. Chis. "+ SW cor. Conc. curb island 13.027m NE  
4. Chis. "+ NW bolt traffic signal base 22.538m SE  
5. Chis. "+ NE bolt traffic signal base 18.217m SW

Center Sec. 29, T27S, R1W  
806.241m Rt. or W. @ Tyler Rd. Sta. 4+808.331 NW±=90° 27' 10"  
1. PK Nail at surface, 3/4" iron pipe 8" below surface  
2. KDOT nail/washer top of fence line post 8.184m NNW  
3. KDOT nail/washer top of fence corner post 3.926m NW  
4. KDOT nail/washer east face power pole 11.820m SW  
5. City of Wichita BM Disc 14.986m SE

W 1/4 Cor. Sec. 28, T27S, R1W  
@ Tyler Rd. Sta. 4+808.331=  
@ McCormick Ave.  
1. Found 3/4" iron pipe in thimble @ ctr. McCormick & Tyler  
2. 3 nails N. face power pole 16.105m SE  
3. 2 nails N. face power pole 15.467m WSW  
4. 3 nails S. face power pole 16.459m NW  
5. PK nail S. face power pole 19.087m NE

BM #P2-C.O.W. Std. Disc, NE corner W. Bd. Kellogg Dr. and Tyler Rd., SW corner traffic signal pole base.  
Hwy @ Sta. +/-17+368 m, +/-42 m Lt. (north).  
Elev. 405.241 m Elev. 1329.527 ft.

BM #P11B-C.O.W. Std. Disc, SE corner E. Bd. Kellogg Dr. and Tyler Rd., NW corner traffic signal pole base.  
Hwy @ Sta. +/-17+340 m, +/-45 m Rt. (south).  
Elev. 405.228 m Elev. 1329.487 ft.

**RECORD DRAWING**

No.	Revisions	By	Date

CITY OF WICHITA  
**TYLER ROAD**  
STA. 4+700 TO STA. 5+100

SEDGWICK COUNTY

**Professional Engineering Consultants, P.A.**  
303 S. TOPEKA • WICHITA, KANSAS 67202  
316-262-2691 • FAX 316-262-3003

Designed by RCH, JPM  
Checked by WDH  
Drawn by JGP  
Date April, 2002  
Job No. 97362

DSNR: RCH OPER: JGP SCALE: 1:500  
 i:/1997/97362/As-Builts/dgn s/ Sh 070-Tyler-pl4700.dgn Last Rev: 8-9-07 By: gdr