

DATE	
BY	
REFERENCES NOTED	
REFERENCES CHECKED	

Sta. 5+118 Construct Curb Inlet (Type 22) Lt. Rotate 4°39'48" Rt. Install 375mm x 8.53m Storm Sewer (RCP)(W) Remove Exist. Curb Inlet Connect to Exist. RCP See Sh. Nos. 138 & 181

Sta. 5+203 Construct Curb Inlet (Type 22) Lt. Install 2-0.3m² x 3.96m Storm Sewer (RCP)(W) Connect to Exist. RCPHE See Sh. Nos. 138 & 181

Sta. 5+235 Construct Curb Inlet (Type 22) Lt. Install 375mm x 29.57m Storm Sewer (RCP)(N) See Sh. Nos. 138 & 181

Sta. 5+335 Construct Curb Inlet (Type 22) Lt. Install 900mm x 24.08m Storm Sewer (RCP)(N) Connect to 2.1m x 1.2m RCB See Sh. Nos. 138 & 181

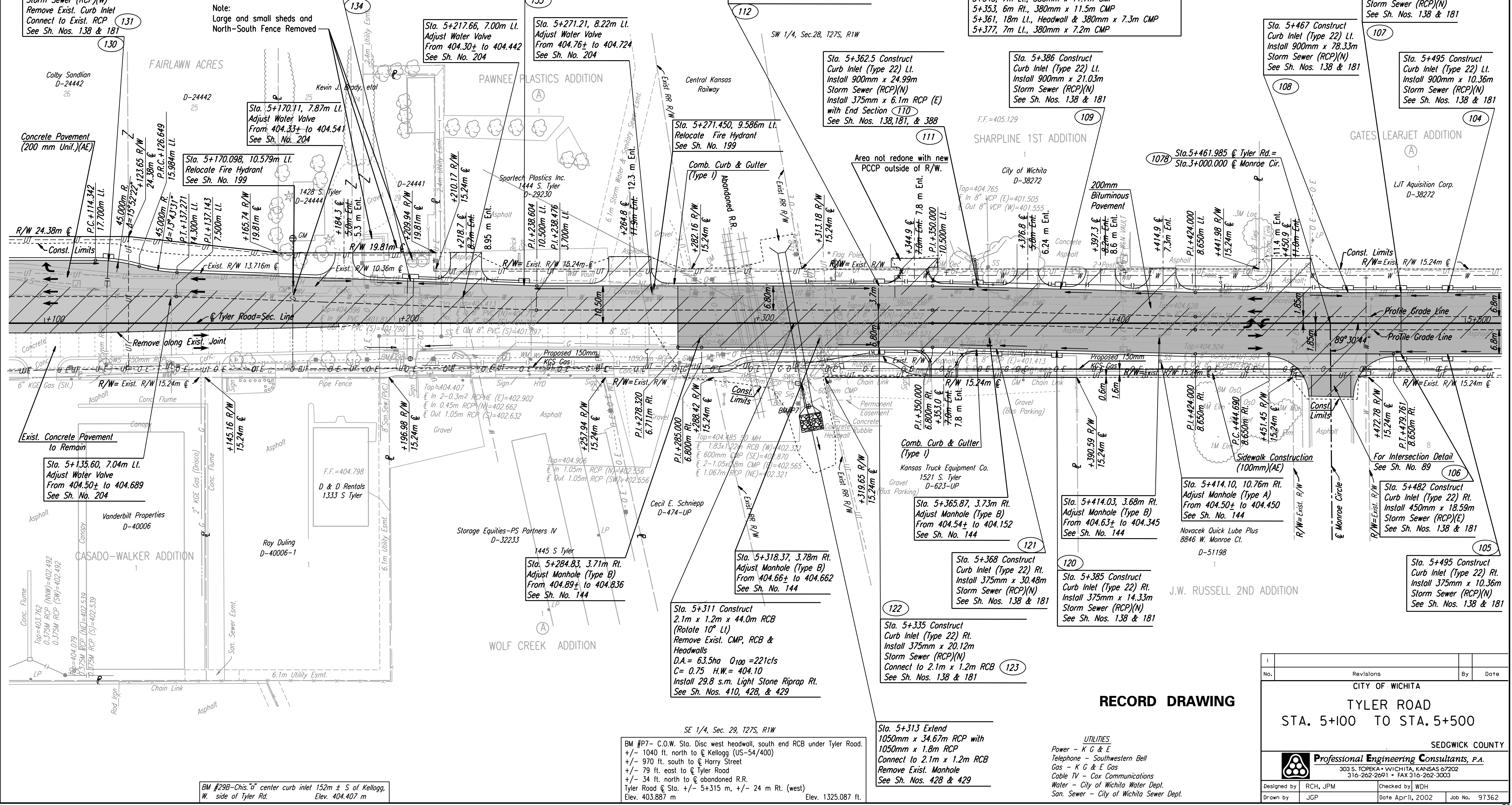
Removal of Existing Structures
 5+118, 11m Lt., Curb Inlet
 5+203, 9m Lt., Curb Inlet
 5+298, 25m Lt. to 25m Rt., Railroad Tracks, Planking & Ballast, & Railroad Signal Equipment
 5+307, 6-2-1.1m x 0.8m CMAC
 5+313, 16m Rt., SD MH & 600mm x 4.5m CMP
 5+315, 24m Rt., Concrete Headwall & RCB
 5+323, 6-600mm x 14m CMP
 5+345, 7m Lt., 380mm x 11.7m CMP
 5+353, 6m Rt., 380mm x 11.5m CMP
 5+361, 18m Lt., Headwall & 380mm x 7.3m CMP
 5+377, 7m Lt., 380mm x 7.2m CMP

Scale: 1:500

POINT NO.	NORTH COORDINATE	EAST COORDINATE
1078	511541.928	493223.130

Sta. 5+482 Construct Curb Inlet (Type 22) Lt. Install 900mm x 12.5m Storm Sewer (RCP)(N) See Sh. Nos. 138 & 181

Sta. 5+495 Construct Curb Inlet (Type 22) Lt. Install 900mm x 10.36m Storm Sewer (RCP)(N) See Sh. Nos. 138 & 181



DSNR: RCH OPER: JGP SCALE: 1:500
 I:/1997/97362/As-Built/dgn s/ Sh 072-Tyler-pl5100.dgn Last Rev: 8-9-07 By: gdr

RECORD DRAWING

No.	Revisions	By	Date

CITY OF WICHITA
 TYLER ROAD
 STA. 5+100 TO STA. 5+500
 SEDGWICK COUNTY

Professional Engineering Consultants, P.A.
 303 S. TOPEKA • WICHITA, KANSAS 67202
 316-262-2691 • FAX 316-262-3003

Designed by	RCH, JPM	Checked by	WDH
Drawn by	JGP	Date	Apr 11, 2002
		Job No.	97362

SE 1/4, Sec. 29, T27S, R1W
 BM #P7- C.O.W. Sta. Disc west headwall, south end RCB under Tyler Road.
 +/- 1040 ft. north to C Kellogg (US-54/400)
 +/- 970 ft. south to C Harry Street
 +/- 79 ft. east to C Tyler Road
 +/- 34 ft. north to C abandoned R.R.
 Tyler Road C Sta. +/- 5+315 m, +/- 24 m Rt. (west)
 Elev. 403.887 m Elev. 1325.087 ft.

- UTILITIES**
- Power - K G & E
 - Telephone - Southwestern Bell
 - Gas - K G & E Gas
 - Cable TV - Cox Communications
 - Water - City of Wichita Water Dept.
 - San. Sewer - City of Wichita Sewer Dept.

BM #29B-Chis. "G" center curb inlet 152m ± S of Kellogg, W. side of Tyler Rd. Elev. 404.407 m