

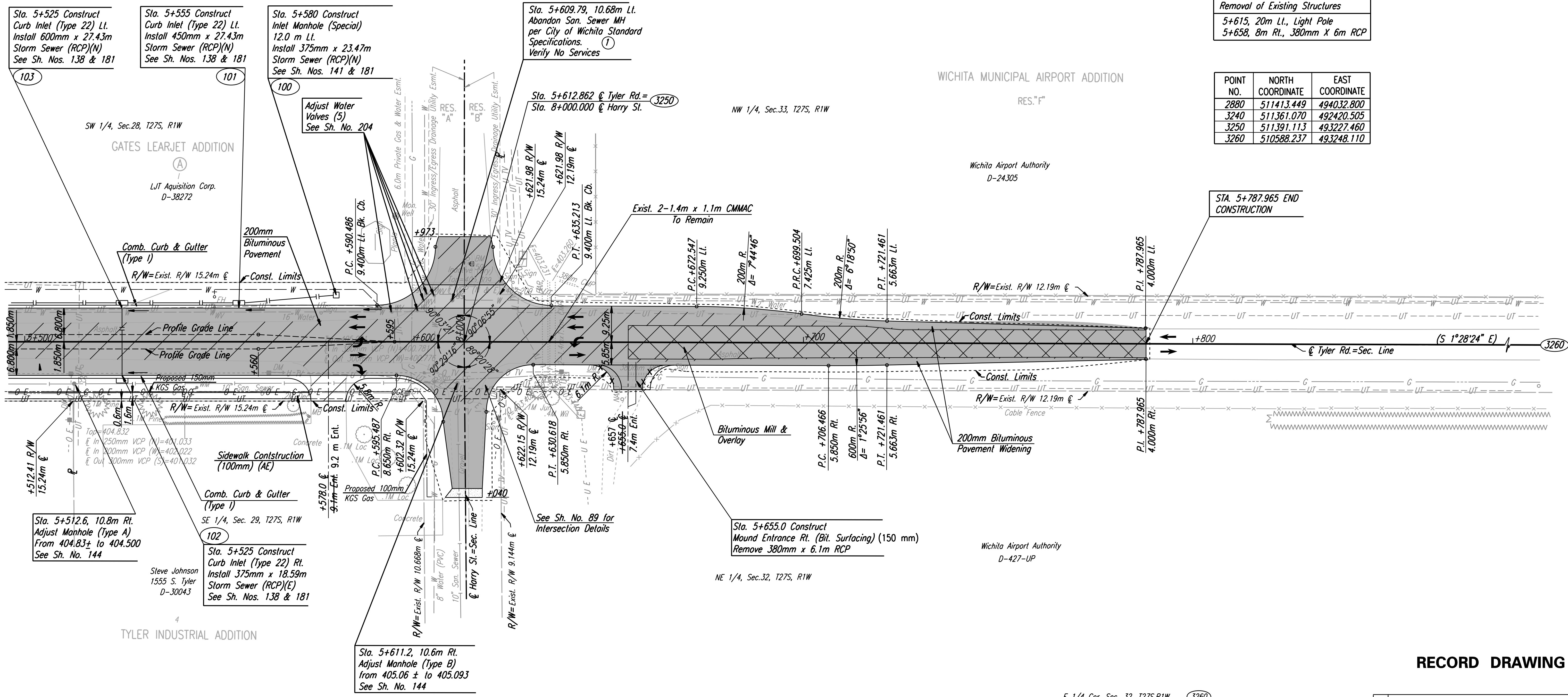
FHWA REGION NO.	STATE	PROJECT NO.	YEAR	SHEET NO.	TOTAL SHEETS
7	KANSAS	54-87 K-6657-01	2002	74	1122

P.I. @ Tyler Rd. Sta. 5+612.862 = 3250
 @ Harry St. Sta. 8+000.000 =
 NE Cor. Sec. 32, T27S, R1W
 Deflection Angle = 0° 10' 16" Rt.
 See Sec. Cor. Ties this Sheet

① Paid for as "Adjustment of Manhole"



DATE	
BY	
REFERENCES NOTED	
REFERENCES CHECKED	



Removal of Existing Structures
 5+615, 20m Lt., Light Pole
 5+658, 8m Rt., 380mm X 6m RCP

POINT NO.	NORTH COORDINATE	EAST COORDINATE
2880	511413.449	494032.800
3240	511361.070	492420.505
3250	511391.113	493227.460
3260	510588.237	493248.110

DSNR: RCH OPER: JGP SCALE: 1:500
 1:/1997/97362/As-Built/dgn s/ Sh 074-Tyler-pl5500.dgn Last Rev. 8-9-07 By: gdr

RECORD DRAWING

No.		Revisions	By	Date
CITY OF WICHITA				
TYLER ROAD				
STA. 5+500 TO STA. 5+800				
SEDGWICK COUNTY				
Professional Engineering Consultants, P.A.				
303 S. TOPEKA • WICHITA, KANSAS 67202 316-262-2691 • FAX 316-262-3003				
Designed by	RCH, JPM	Checked by	WDH	
Drawn by	JGP	Date	Apr 11, 2002	Job No. 97362

E 1/4 Cor. Sec. 32, T27S, R1W 3260
 @ Tyler Rd. Sta. 6+416.004
 1. Found 3/4" iron pipe in thimble 0.160m below surface
 2. PK nail E. face power pole
 3. PK nail top of cable fence post
 4. 3 nails NE face power pole
 5. Chis. "+" in conc. base fence brace post

46.560m SSW
 16.785m WSW
 18.869m NW
 12.356m NW

UTILITIES
 Power - K G & E
 Telephone - Southwestern Bell
 Gas - K G & E Gas
 Cable TV - Cox Communications
 Water - City of Wichita Water Dept.
 San. Sewer - City of Wichita Sewer Dept.

S 1/4 Cor. Sec. 29, T27S, R1W 3240
 807.514m Rt. or W. @ Tyler Rd. Sta. 5+612.862 =
 @ Harry St. Sta. 8+807.542 NW 4=90° 03' 21"
 1. Found 1/2" rebar
 2. 60d nail top of guard post 7.735m SSW
 3. 60d nail top of guard post 8.199m NW
 4. Chis. "+" south face steel corner post 16.142m NE
 5. PK nail top of guard post 11.540m S

NE Cor. Sec. 32, T27S, R1W 3250
 @ Tyler Rd. Sta. 5+612.862 =
 @ Harry St. Sta. 8+000.000
 1. Found RR Date Nail "40" @ Tyler & Harry
 2. Mason nail & cap N. face power pole 21.494m SW
 3. PK nail & shiner E. Face power pole 26.186m SSW
 4. Chis. "+" N. PC, W. end curb island 15.522m E
 5. Chis. "+" top SE guard post to gas reg. 18.804m NW

S 1/4 Cor. Sec. 28, T27S, R1W 2880
 805.650m Lt. or E. @ Tyler Rd. Sta. 5+612.862 =
 @ Harry St. Sta. 7+194.350 NE 4=90° 03' 21"
 1. Found 3/4" iron pipe 0.2m below surface in E. Bd. Harry
 2. PK nail top of guard post 8.238m NW
 3. 3 nails S face wooden post 10.335m NE
 4. NGS Station Reed 2 17.194m SE
 5. NGS Station Reed 2 Rm No.6 19.233m SW

DESTROYED
 BM #50-Chis. "u" light pole base in median, entrance to
 Bombardier, east side of Tyler. Elev. 406.435

BM #51-Chis. "u" @ Hdwl. west side Tyler Rd. @
 R/W fence. 400m south of Harry Elev. 403.733 m
 Elev. 1324.581 ft.