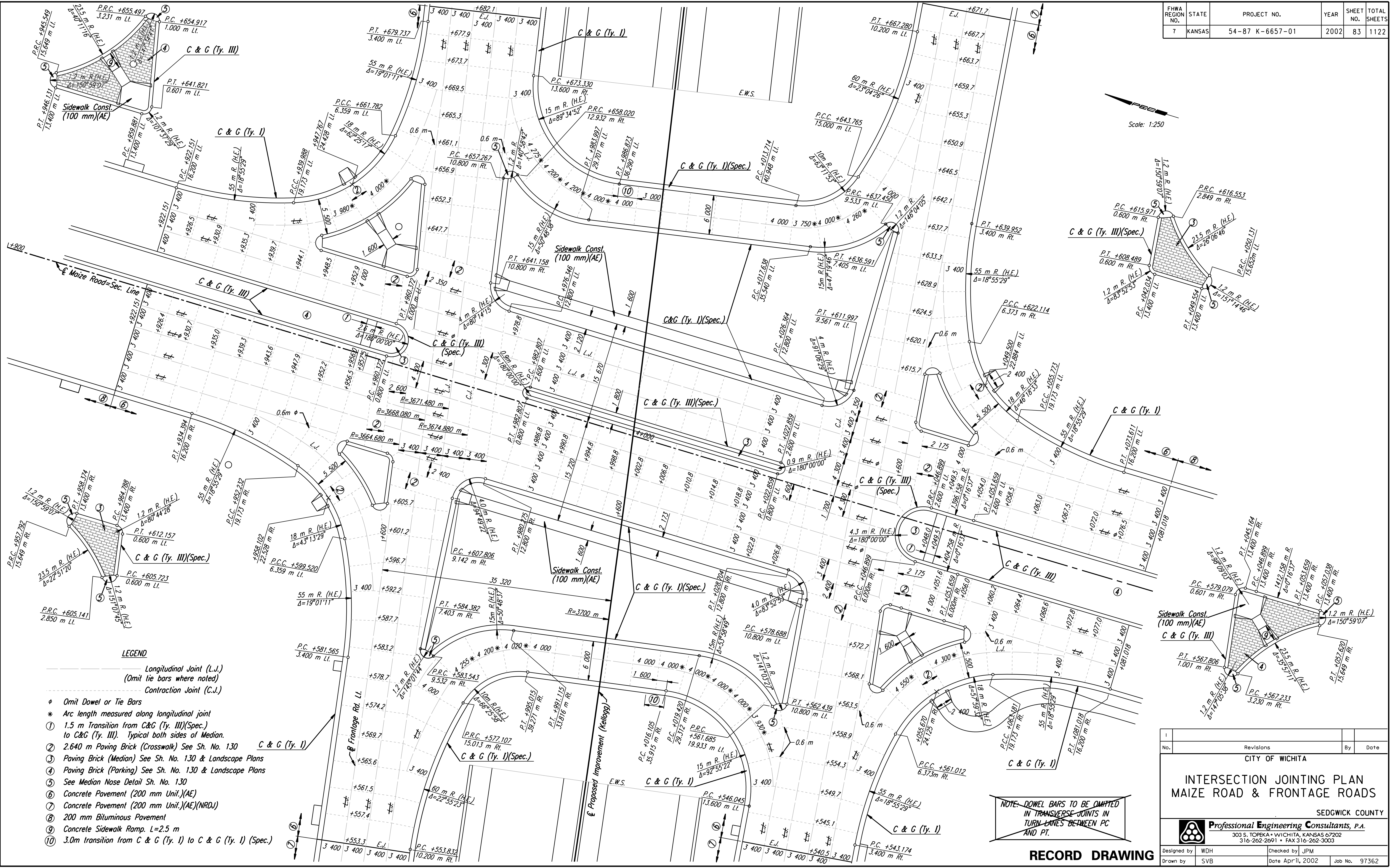


FHWA REGION NO.	STATE	PROJECT NO.	YEAR	SHEET NO.	TOTAL SHEETS
7	KANSAS	54-87 K-6657-01	2002	83	1122

DATE	
BY	
REFERENCES NOTED	
REFERENCES CHECKED	

DSNR: WDH OPER: JGP SCALE: 1:250  
 k:\1997\973562\As-Builts\ dgn's\Sh\_083-maize\jts.dgn Last Rev: 8-10-07 By: gdr



**LEGEND**  
 Longitudinal Joint (L.J.)  
 (Omit tie bars where noted)  
 Contraction Joint (C.J.)

- ♦ Omit Dowel or Tie Bars
- \* Arc length measured along longitudinal joint
- ① 1.5 m Transition from C&G (Ty. III)(Spec.) to C&G (Ty. III). Typical both sides of Median.
- ② 2.640 m Paving Brick (Crosswalk) See Sh. No. 130
- ③ Paving Brick (Median) See Sh. No. 130 & Landscape Plans
- ④ Paving Brick (Parking) See Sh. No. 130 & Landscape Plans
- ⑤ See Median Nose Detail Sh. No. 130
- ⑥ Concrete Pavement (200 mm Unit)(AE)
- ⑦ Concrete Pavement (200 mm Unit)(AE)(NRD)
- ⑧ 200 mm Bituminous Pavement
- ⑨ Concrete Sidewalk Ramp. L=2.5 m
- ⑩ 3.0m transition from C & G (Ty. I) to C & G (Ty. I) (Spec.)

NOTE: DOWEL BARS TO BE OMITTED IN TRANSVERSE JOINTS IN TURN LANES BETWEEN PC AND PT.

**RECORD DRAWING**

No.	Revisions	By	Date

CITY OF WICHITA

**INTERSECTION JOINTING PLAN  
 MAIZE ROAD & FRONTAGE ROADS**

SEDGWICK COUNTY

**Professional Engineering Consultants, P.A.**  
 303 S. TOPEKA • WICHITA, KANSAS 67202  
 316-262-2691 • FAX 316-262-3003

Designed by	WDH	Checked by	JPM
Drawn by	SVB	Date	April, 2002
		Job No.	97362