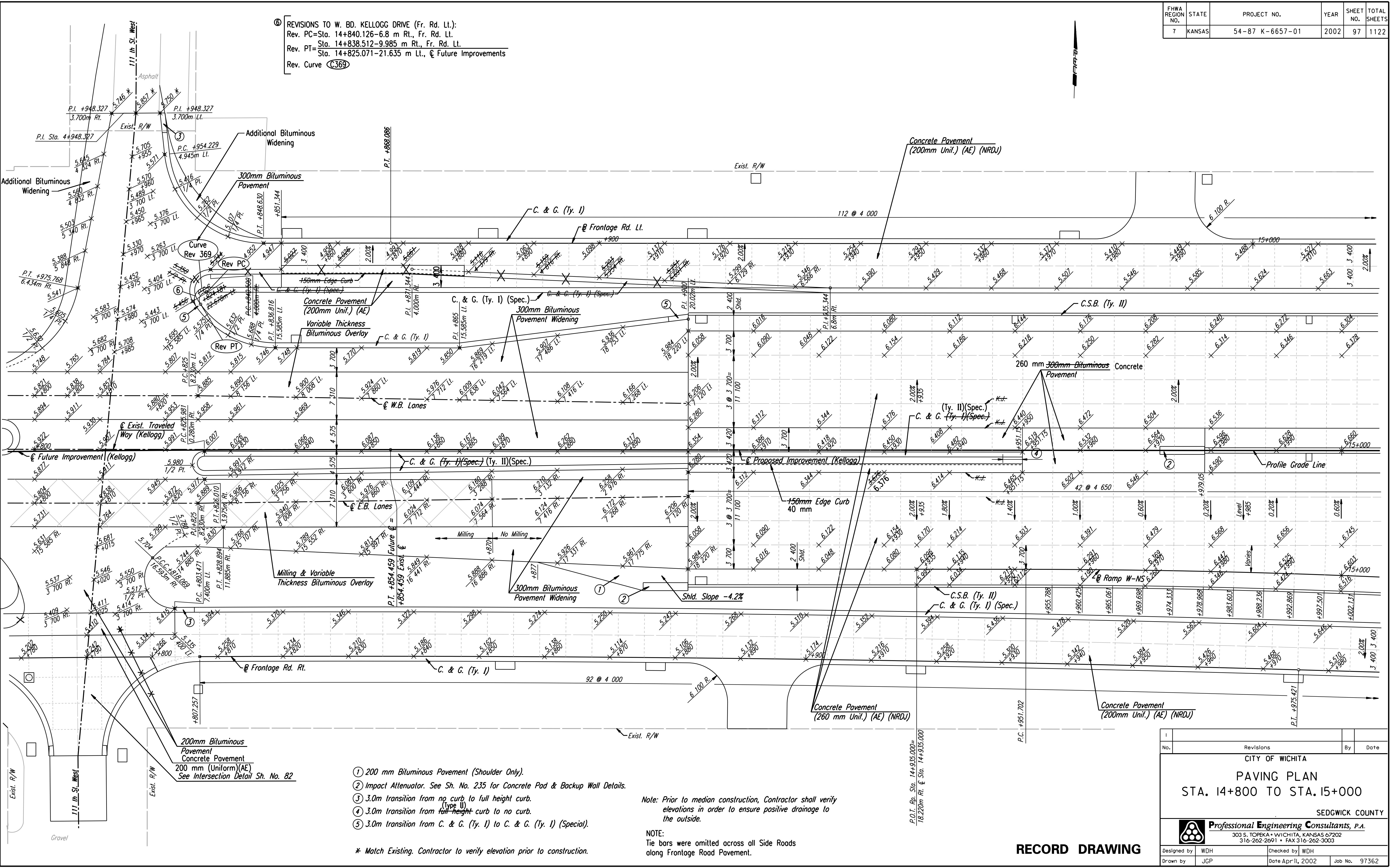


FHWA REGION NO.	STATE	PROJECT NO.	YEAR	SHEET NO.	TOTAL SHEETS
7	KANSAS	54-87 K-6657-01	2002	97	1122

⑥ REVISIONS TO W. BD. KELLOGG DRIVE (Fr. Rd. Lt.):  
 Rev. PC=Sta. 14+840.126-6.8 m Rt., Fr. Rd. Lt.  
 Rev. PT=Sta. 14+838.512-9.985 m Rt., Fr. Rd. Lt.  
 Sta. 14+825.071-21.635 m Lt., @ Future Improvements  
 Rev. Curve (C.369)

DATE	
BY	
REFERENCES NOTED	
REFERENCES CHECKED	



DSNR: WDH OPER: JGP SCALE: 1:250  
 i:/1997/97362/As-Built/dgn's/Sh 097-pav148.dgn Last Rev: 8-13-07 By: gdr

- ① 200 mm Bituminous Pavement (Shoulder Only).
- ② Impact Attenuator. See Sh. No. 235 for Concrete Pad & Backup Wall Details.
- ③ 3.0m transition from no curb to full height curb.
- ④ 3.0m transition from full height curb to no curb.
- ⑤ 3.0m transition from C. & G. (Ty. I) to C. & G. (Ty. I) (Special).

\* Match Existing. Contractor to verify elevation prior to construction.

Note: Prior to median construction, Contractor shall verify elevations in order to ensure positive drainage to the outside.

NOTE:  
Tie bars were omitted across all Side Roads along Frontage Road Pavement.

No.	Revisions	By	Date

CITY OF WICHITA  
**PAVING PLAN**  
 STA. 14+800 TO STA. 15+000  
 SEDGWICK COUNTY

**Professional Engineering Consultants, P.A.**  
 303 S. TOPEKA • WICHITA, KANSAS 67202  
 316-262-2691 • FAX 316-262-3003

Designed by	WDH	Checked by	WDH
Drawn by	JGP	Date	April, 2002
		Job No.	97362

**RECORD DRAWING**