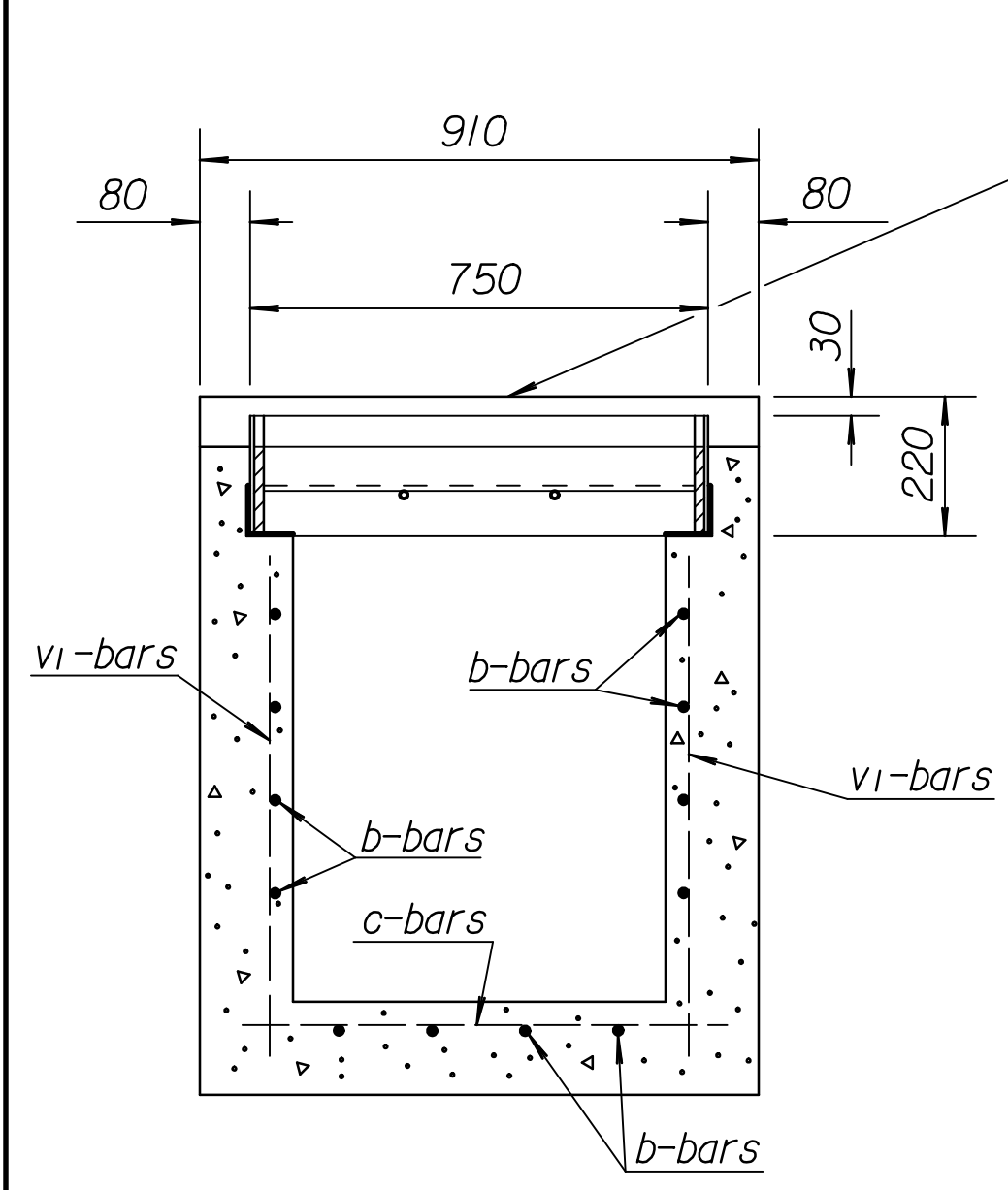
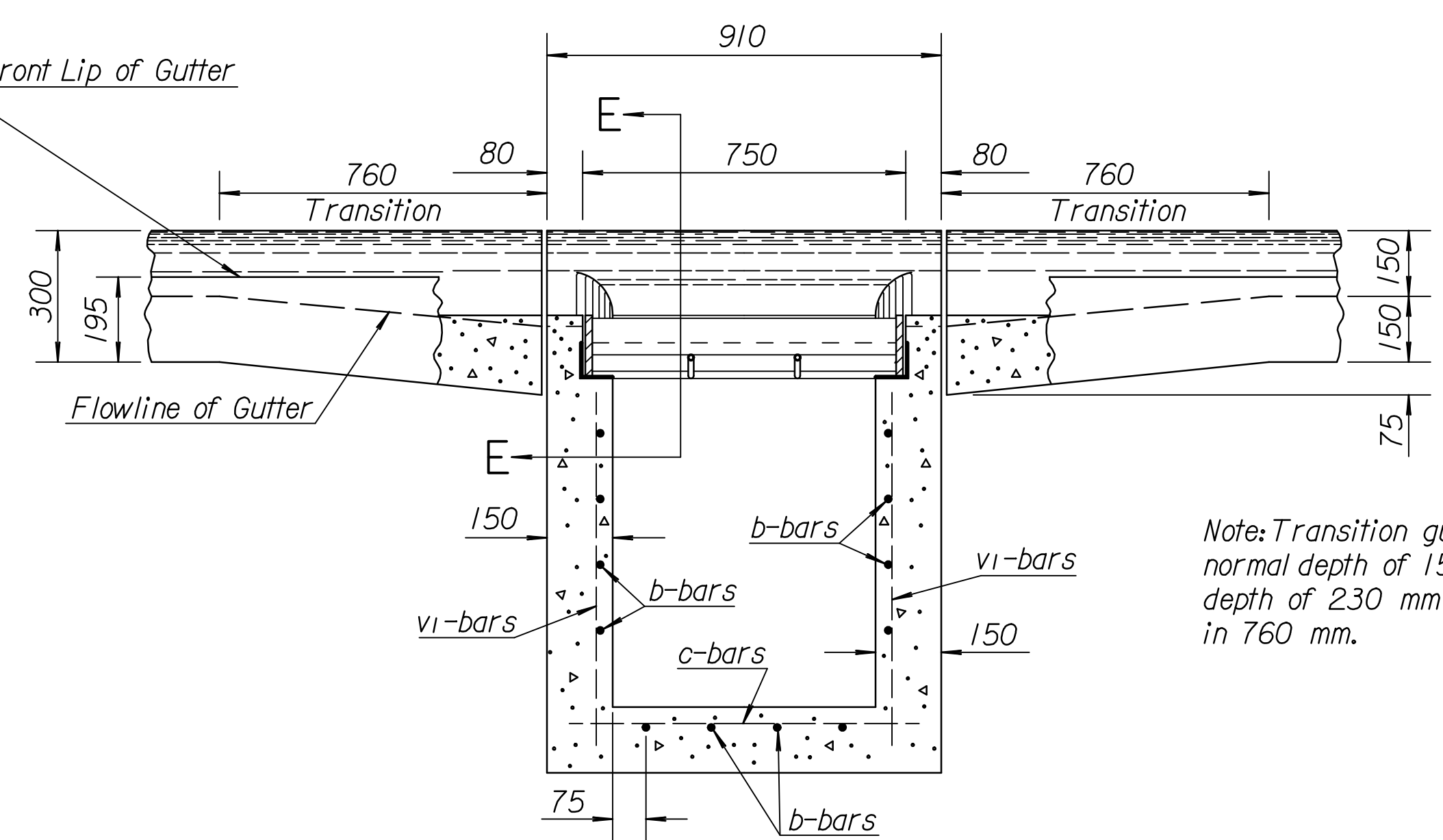


FHWA REGION NO.	STATE	PROJECT NO.	YEAR	SHEET NO.	TOTAL SHEETS
7	KANSAS	54-87 K-6657-01	2002	135	122

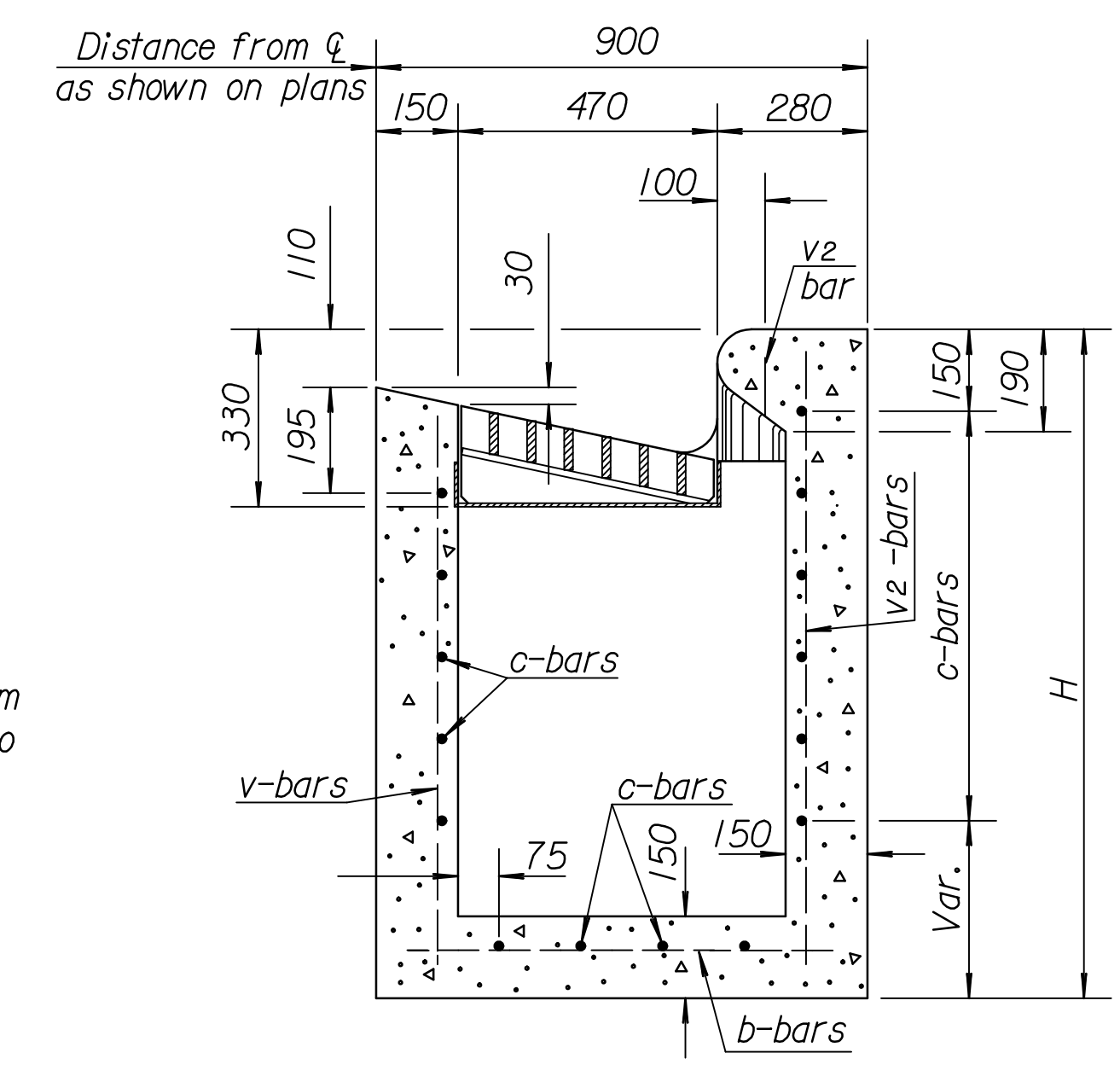


SECTION D-D

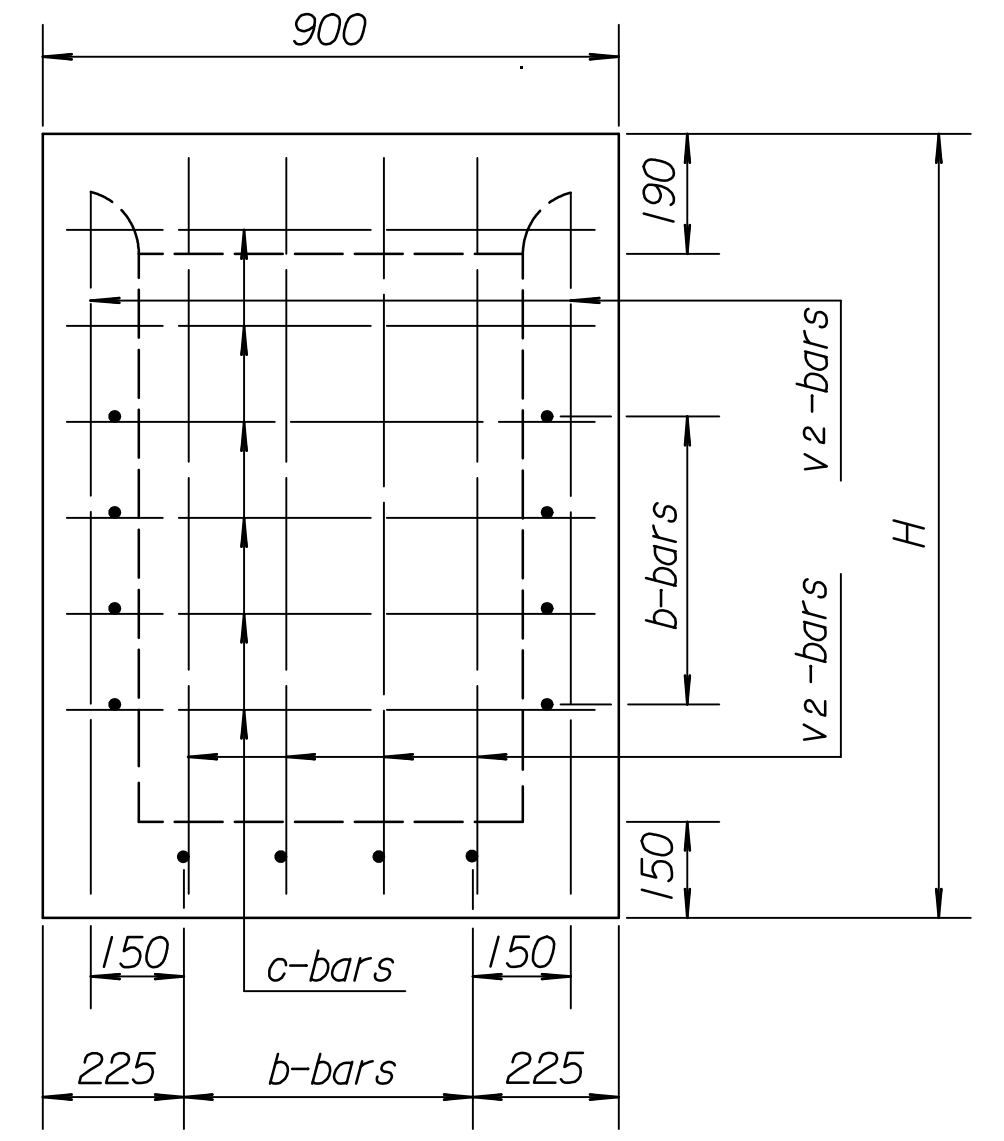


SECTION C-C

Note: Transition gutter from normal depth of 150 mm to depth of 230 mm at inlet in 760 mm.

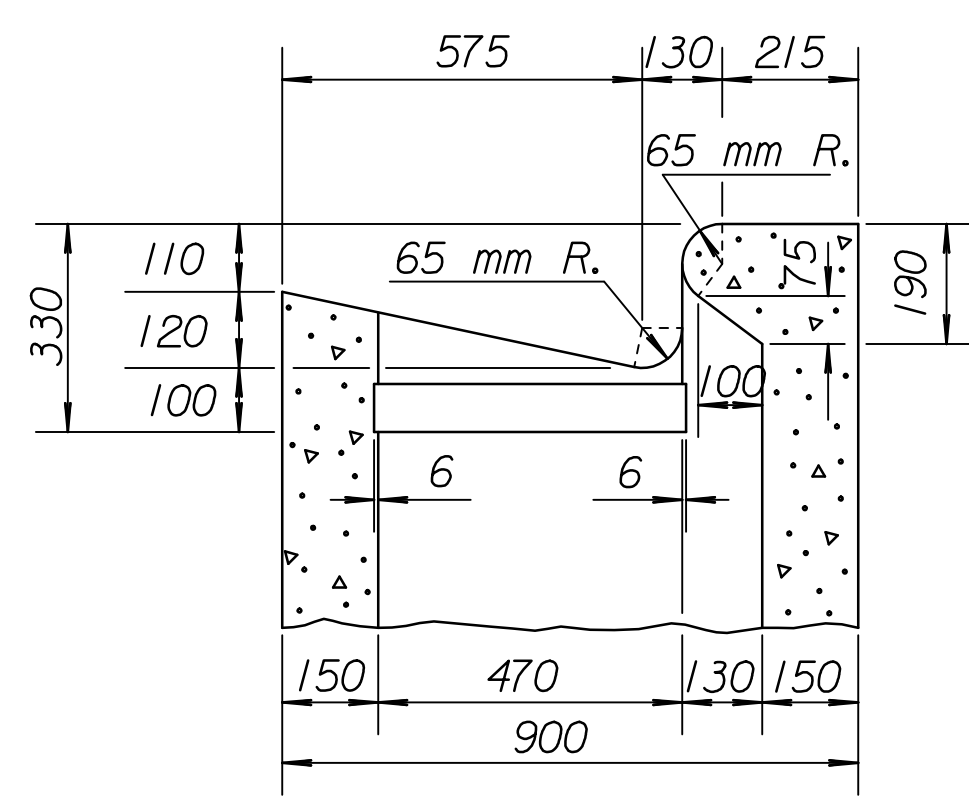


SECTION A-A

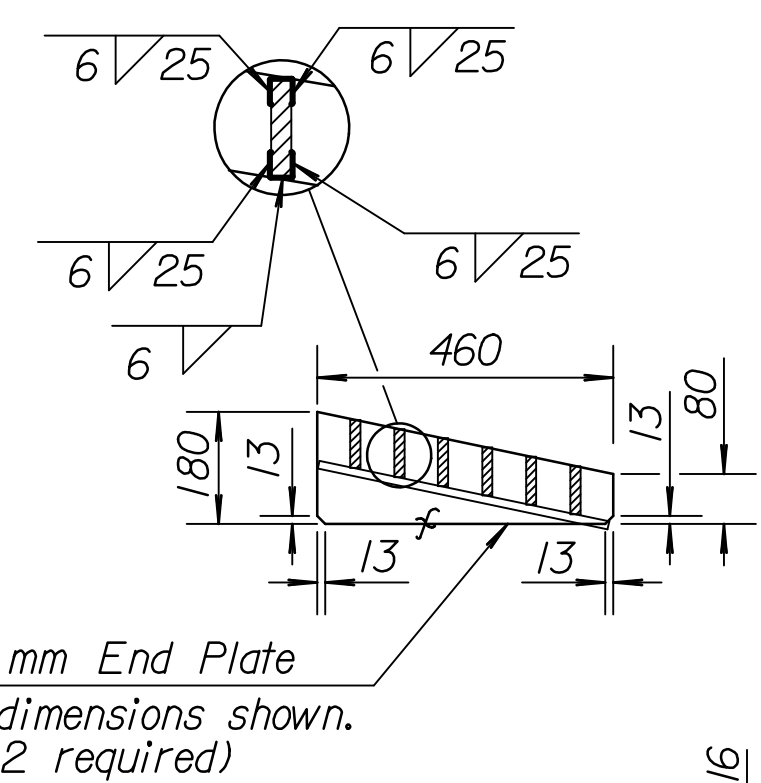


REAR WALL

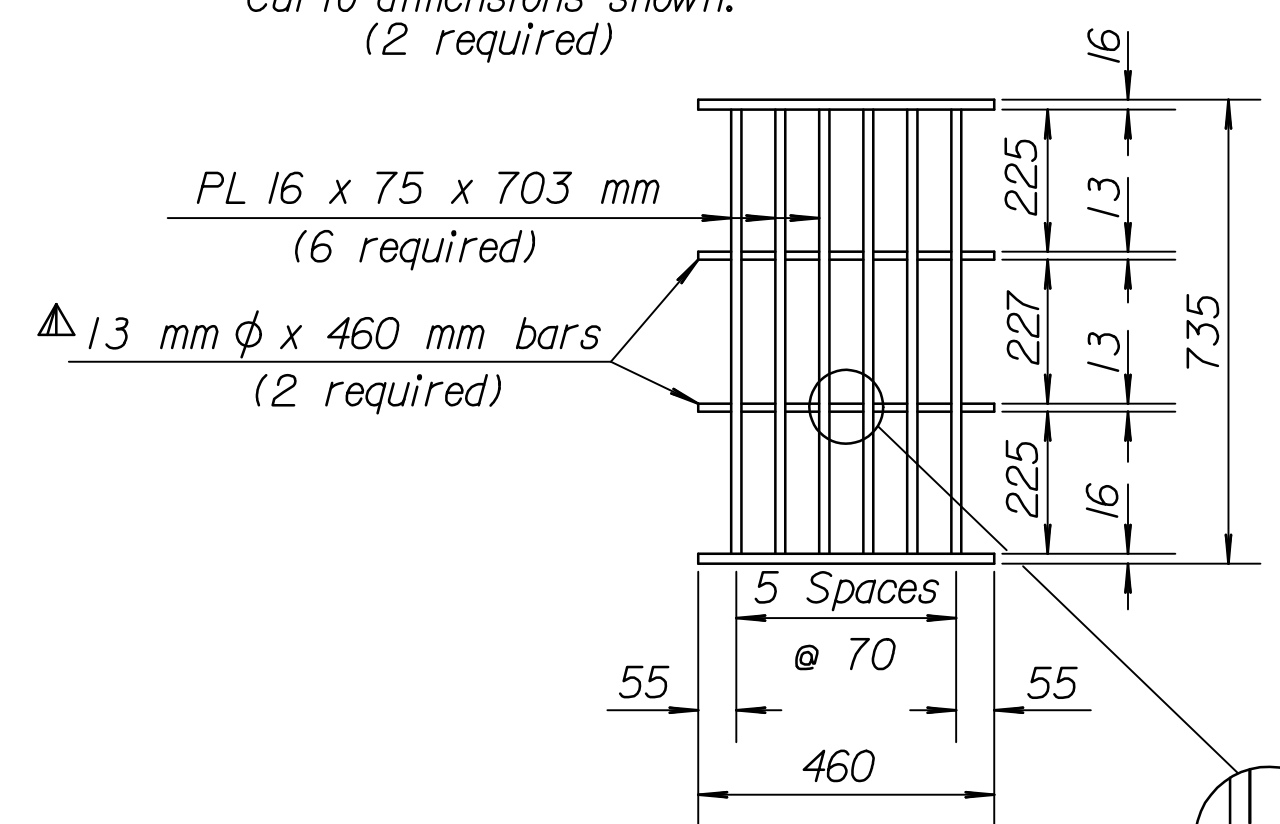
Note: All reinforcing shall be #13 at 150 mm centers. Minimum clear distance to reinforcement shall be 40 mm.



SECTION E-E
(Reinforcing steel not shown.)

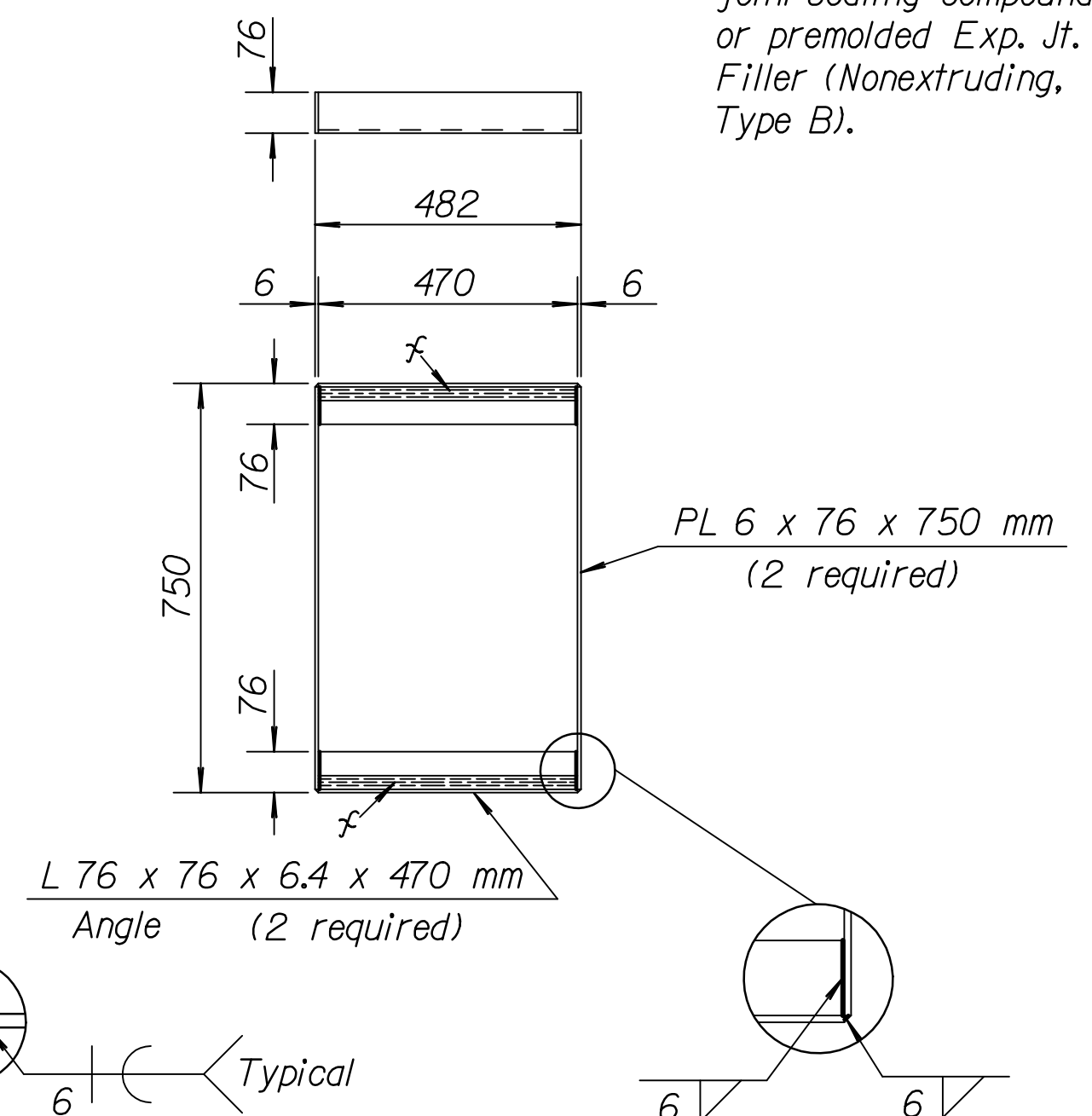


16 mm End Plate
Cut to dimensions shown.
(2 required)



PL 16 x 75 x 703 mm
(6 required)

13 mm ϕ x 460 mm bars
(2 required)



PL 6 x 76 x 750 mm
(2 required)

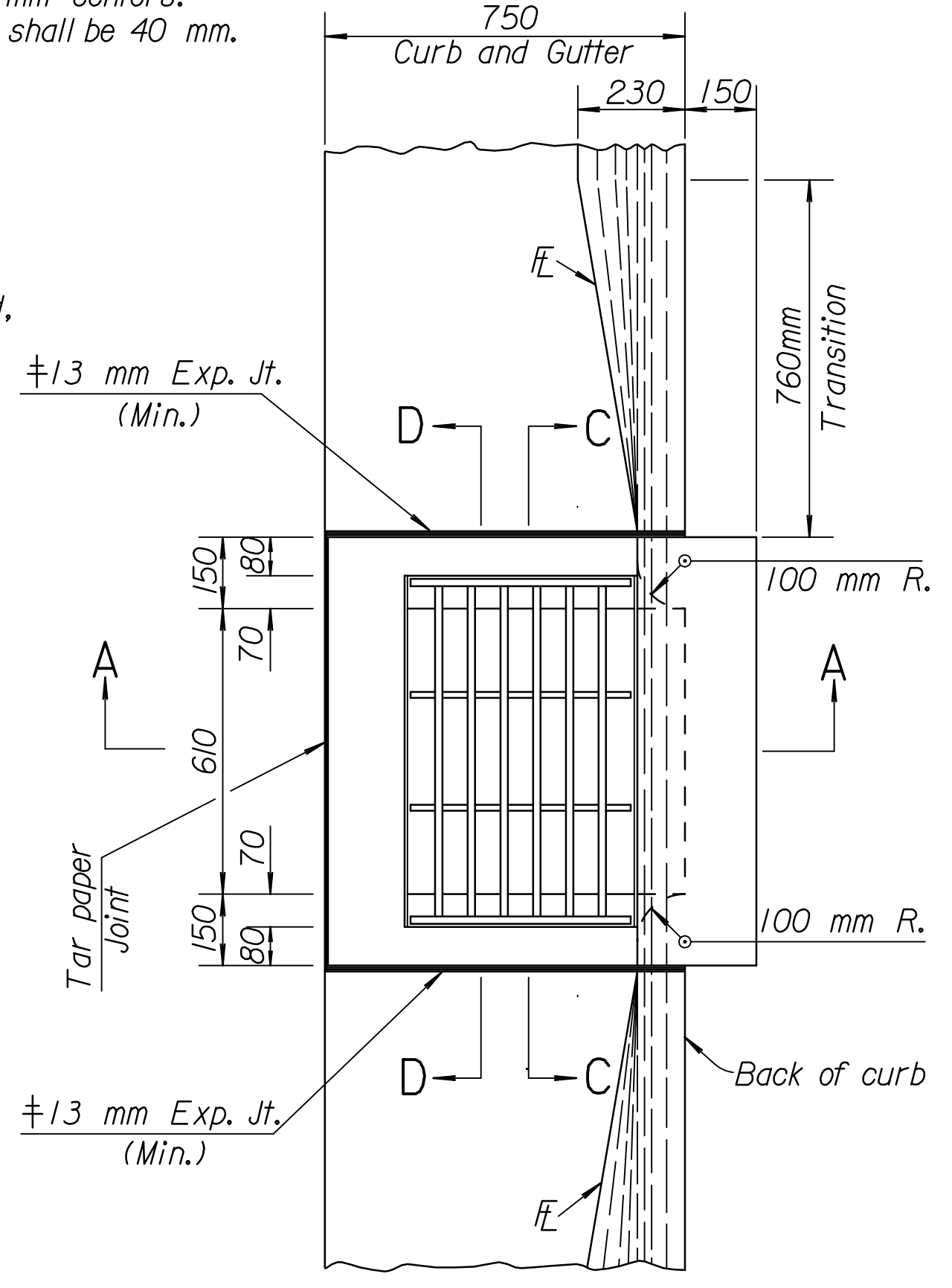
L 76 x 76 x 6.4 x 470 mm
Angle (2 required)

GRATE AND FRAME
(TYPE F)

Welded Structural Steel Grate & Frame
Mass = 68 kg Each (With Cross-bars)

Note: To prevent grate from rocking on bearing angles, machine finish surfaces indicated thus $\frac{f}{f}$.

On all interstate projects and rural area projects, the two 13 mm ϕ x 460 mm bars are to be omitted. The mass of the grate and frame without these bars is 67 kg of structural steel.



PLAN

GENERAL NOTES

Class A Concrete, Class A Concrete (AE), or the mix used in Concrete Pavement, at the Contractor's option, shall be used throughout.

All exposed edges shall be finished with an edging tool.

Reinforcing bars shall be bent around pipe.

No reduction in concrete quantities shall be made for pipe openings.

When directed by the Engineer, a small opening in the back of the inlet shall be provided in order to drain a low area. Reinforcing bars shall extend through the opening. No reduction in concrete quantities will be made for this opening.

The floor of the inlet shall be shaped as shown in various "EXAMPLES" on Reinforced Concrete Manhole Standard Drawing RD730 SI.

No addition in concrete quantities shall be made for shaping floor of inlet.

No reduction in pay length of curb, gutter, or curb & gutter will be made through the inlet area.

All exposed structural steel shall be painted with a coat of inorganic zinc primer and then with a topcoat or a field coat of organic zinc, each coat to be 0.076 mm to 0.1 mm. As an alternate, the grate and frame may be hot dip galvanized after fabrication in accordance with the Standard Specifications.

All structural steel shall comply with ASTM A-36M, A-242M, or A-441M.

Curb and Gutter sections shall be shaped as shown where required by the installation of curb inlets. This work shall be subsidiary to other bid items.

See sheet entitled "Reinforcing Steel for Inlets and Manholes" for details and quantities.

NO.	DATE	REVISIONS	BY	APP'D
2	3-3-99	Added hot dip galvanized option.	R.J.S.	J.O.B.
1	1-27-97	Revised Rebar Designation	R.J.S.	J.O.B.

KANSAS DEPARTMENT OF TRANSPORTATION

TYPE 10
CURB INLET

DESIGNED	3-17-99	APP'D.	James O. Brewer
DESIGN CK.	DETAIL CK.	QUANTITIES	TRACED
		QUAN. CK.	TRACE CK.

RECORD DRAWING

DSNR: OPER: JGP SCALE: 100
 12/1997/91362/As-Built/sgn's/Sh 135-KD01_Std-RD745SI.dgn Last Rev: 8-17-07 By: gdr