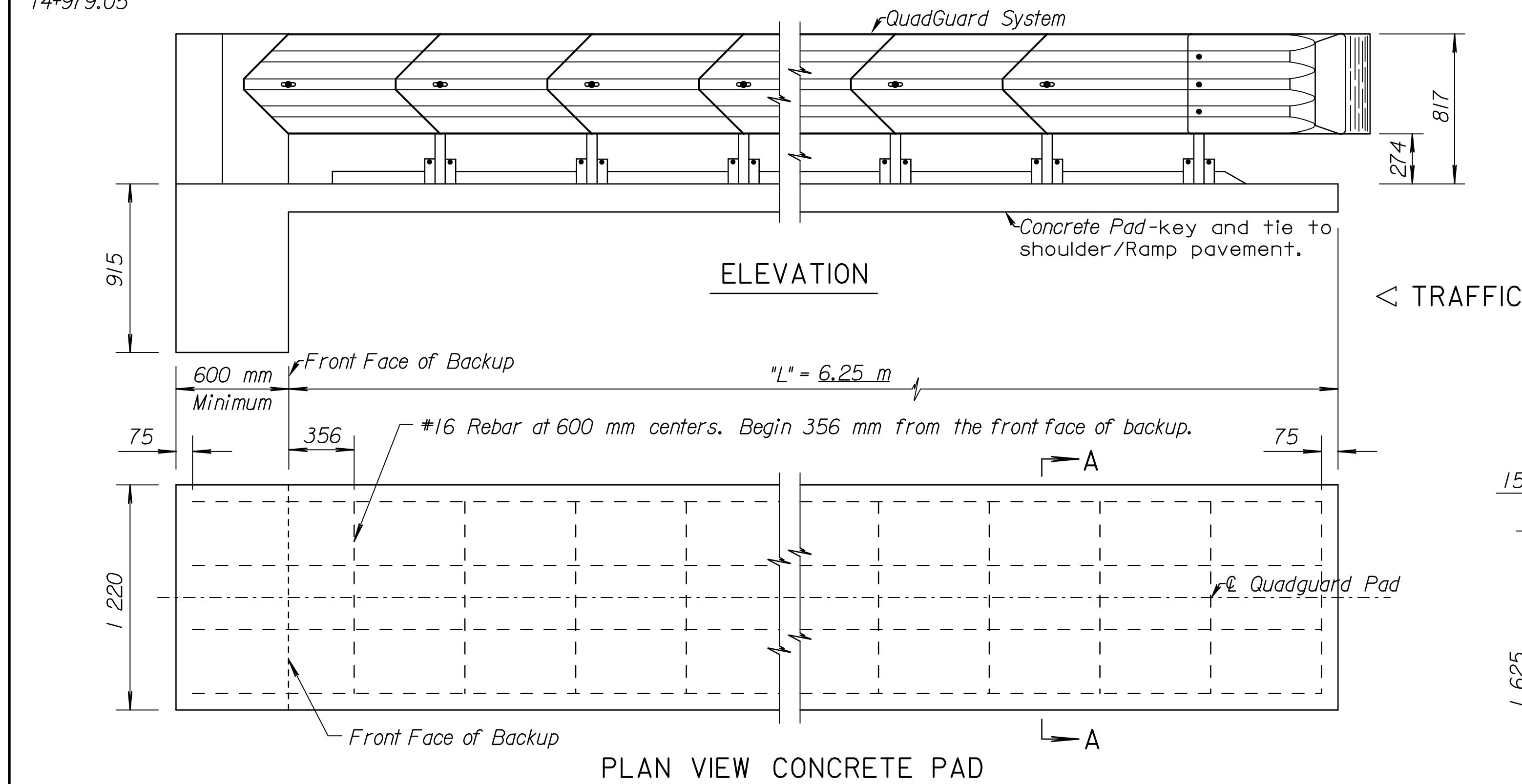
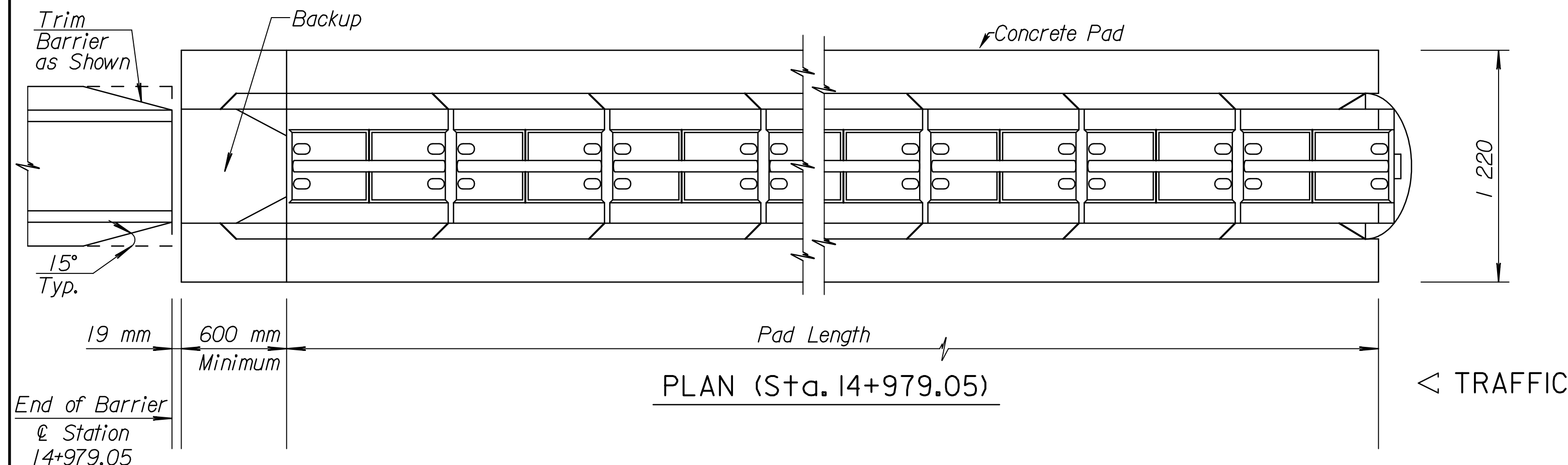
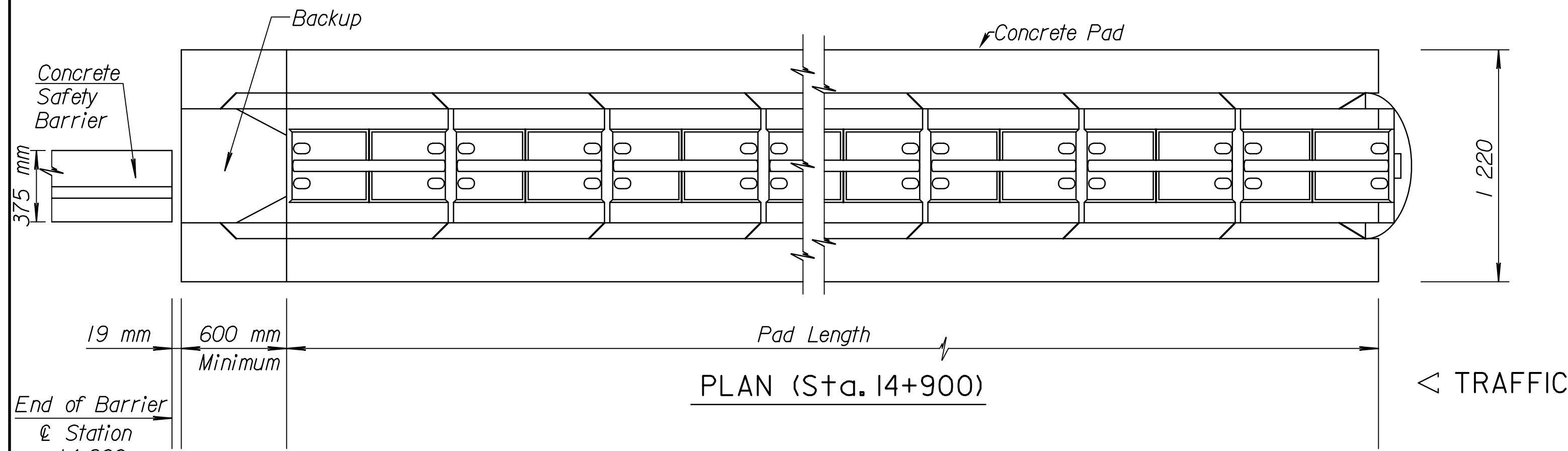
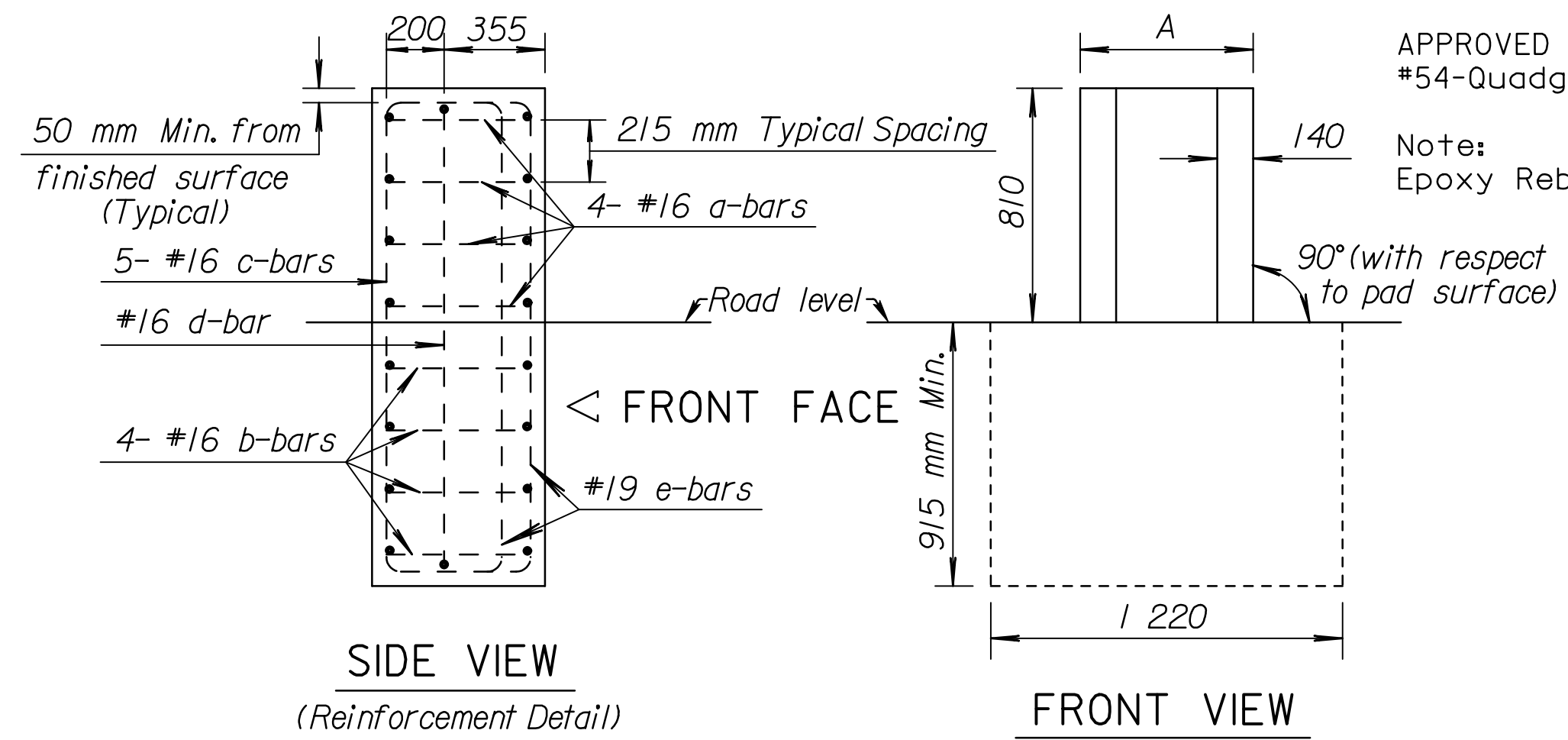
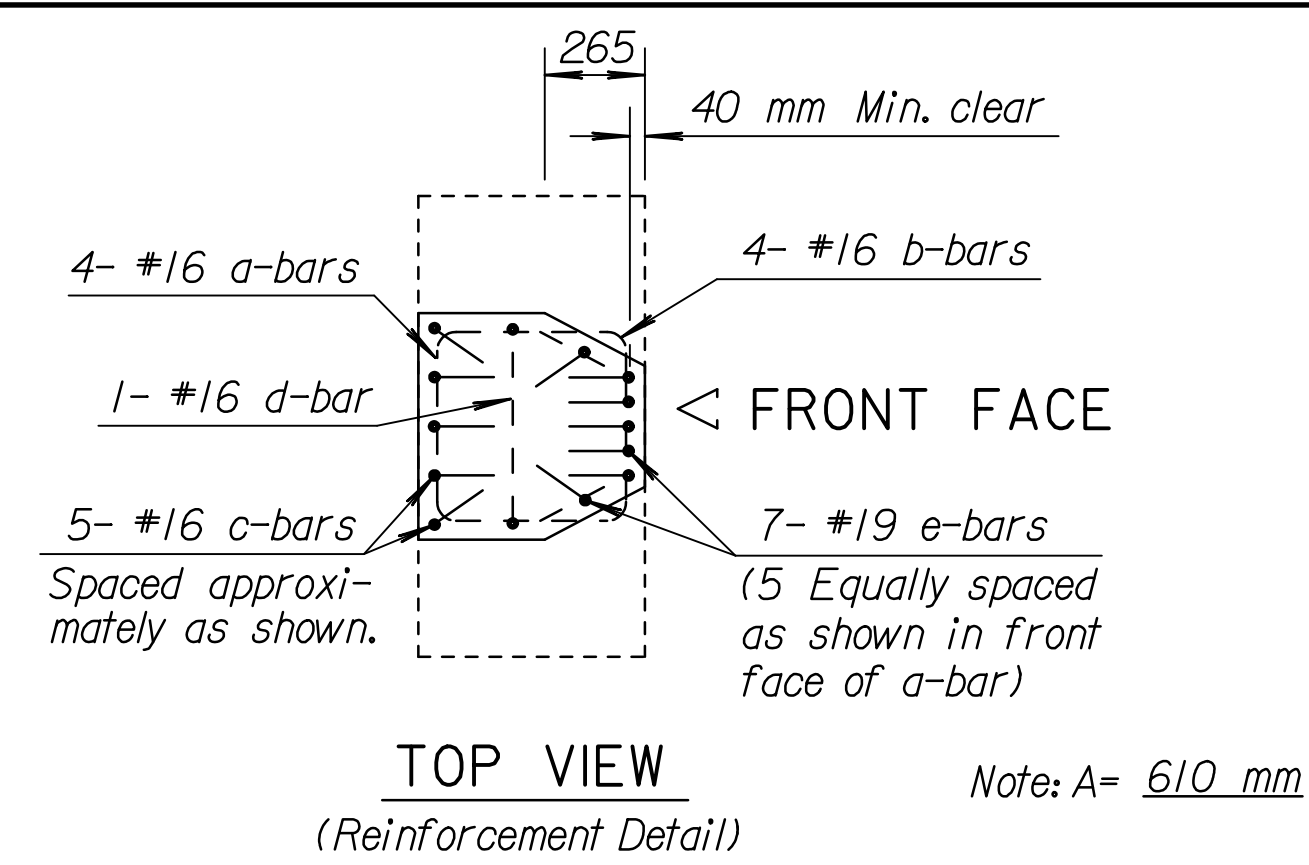


FHWA REGION NO.	STATE	PROJECT NO.	YEAR	SHEET NO.	TOTAL SHEETS
7	KANSAS	54-87 K-6657-01	2002	235	1122

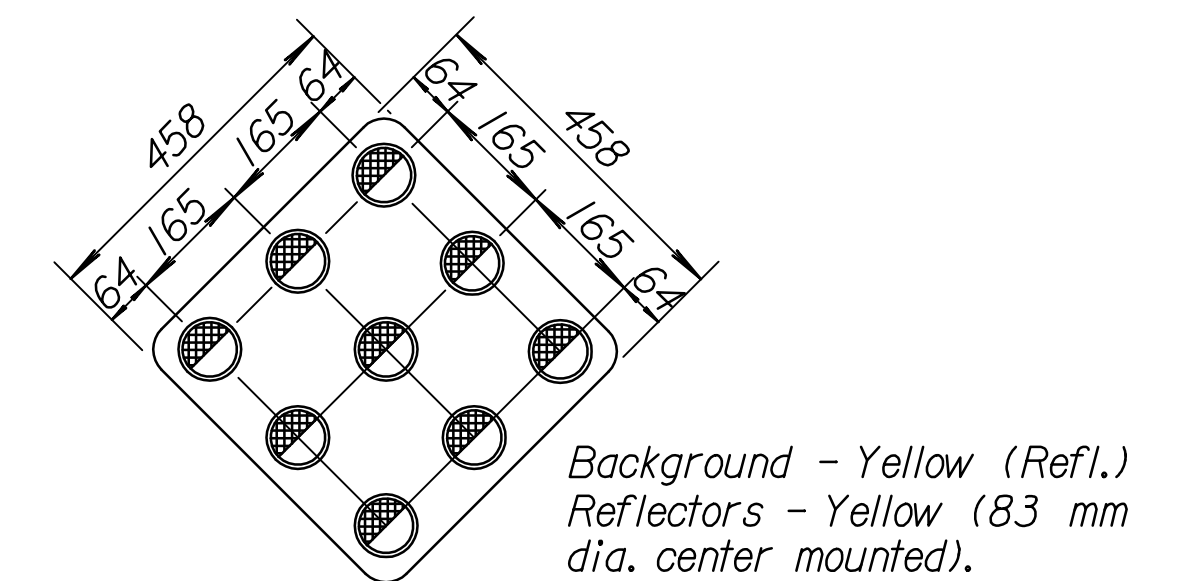
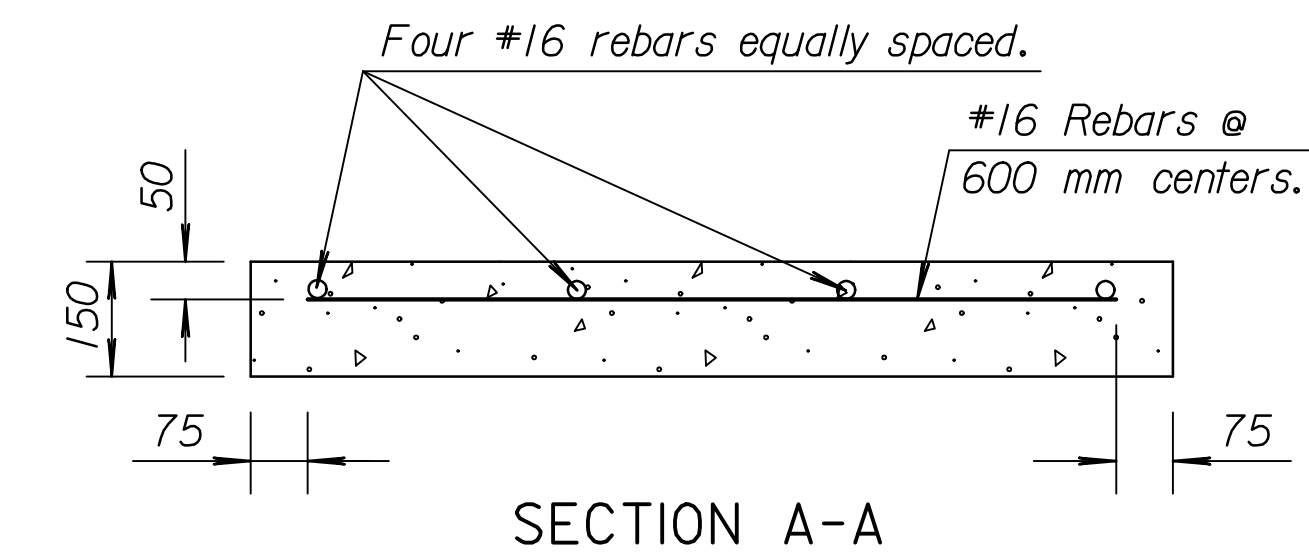
Note to the Designer: The designer shall be responsible for designating dimensions "A" and "L" and the QuadGuard model number.



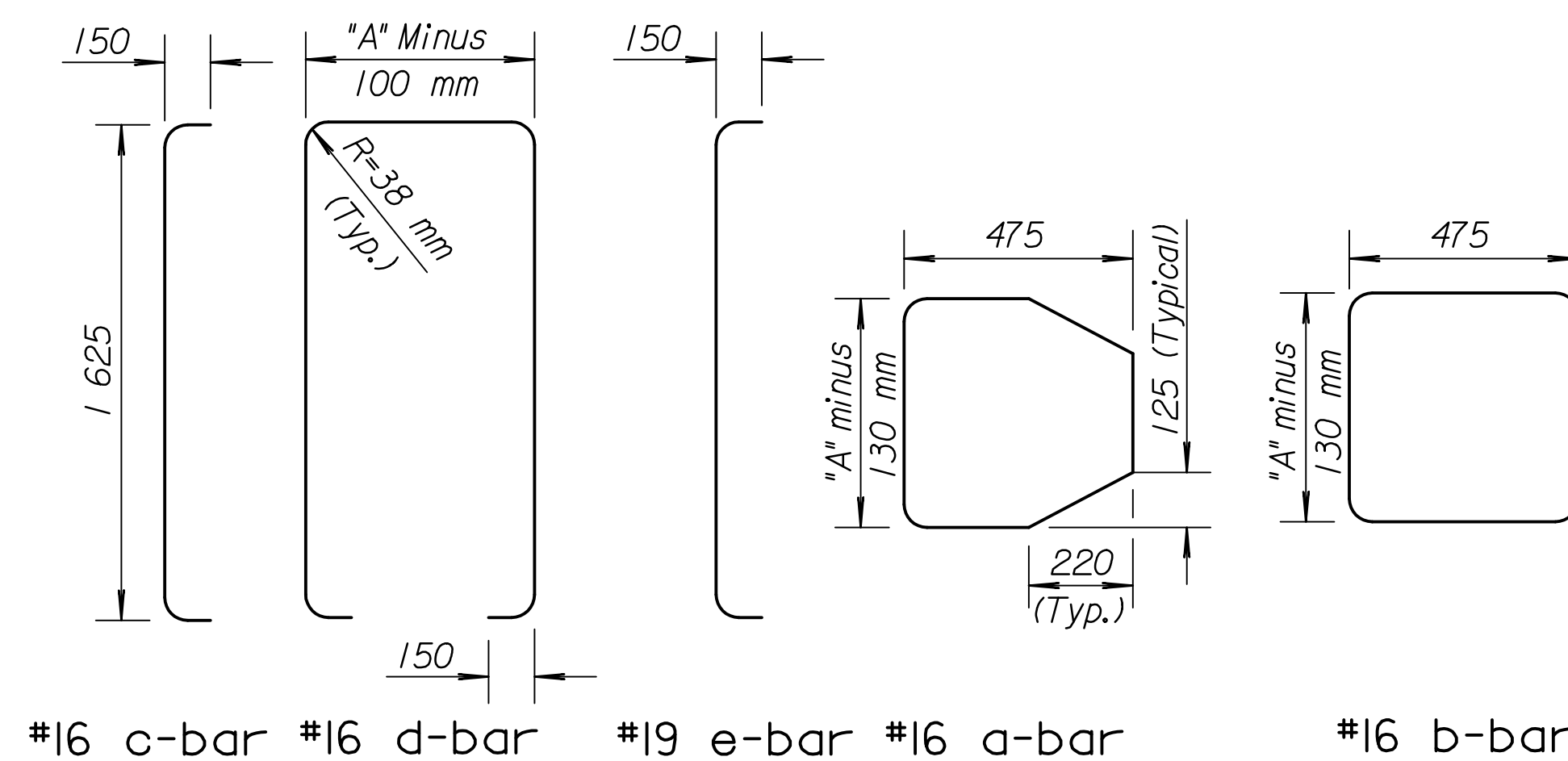
Note: Cross slope of pad shall not exceed 8% and not vary more than 2% from front to back.
Pad and Backup Block should be tied together & poured monolithically. Concrete for pad and backup block shall have a minimum compressive strength of 28 MPa.



CONCRETE BACKUP DETAILS



Aluminum Sign Blanks shall be ASTM B-209 (H), Alloy 6061-T6, 5154-H38, or 5052-H38. All holes shall be 10mm in diameter.
The 83 mm diameter yellow button delineator shall comply with the Standard Specifications.
The type of adhesive used for reflective sheeting shall be heat activated or pressure sensitive.
Sign face shall be covered with regular performance reflective sheefing.



All dimensions are out-to-out on bars unless otherwise noted.

RECORD DRAWING

3					
2					
1					
	NO.	DATE	REVISIONS	BY	APP'D
KANSAS DEPARTMENT OF TRANSPORTATION					
IMPACT ATTENUATOR QUADGUARD SYSTEM					
RD637S1					
DESIGNED	2-12-01	APP'D.	James O. Brewer		
DESIGN CK.	DETAIL CK.	QUAN. CK.	TRACE CK.	Traced Bowser	

DSMR: OPER: S/B SCALE: 1:1/997 97.362/As-Built/dgn: Sh 235-RD07_S1d-RD637S1.dgn Last Rev: 8-21-07 Bjr: gar