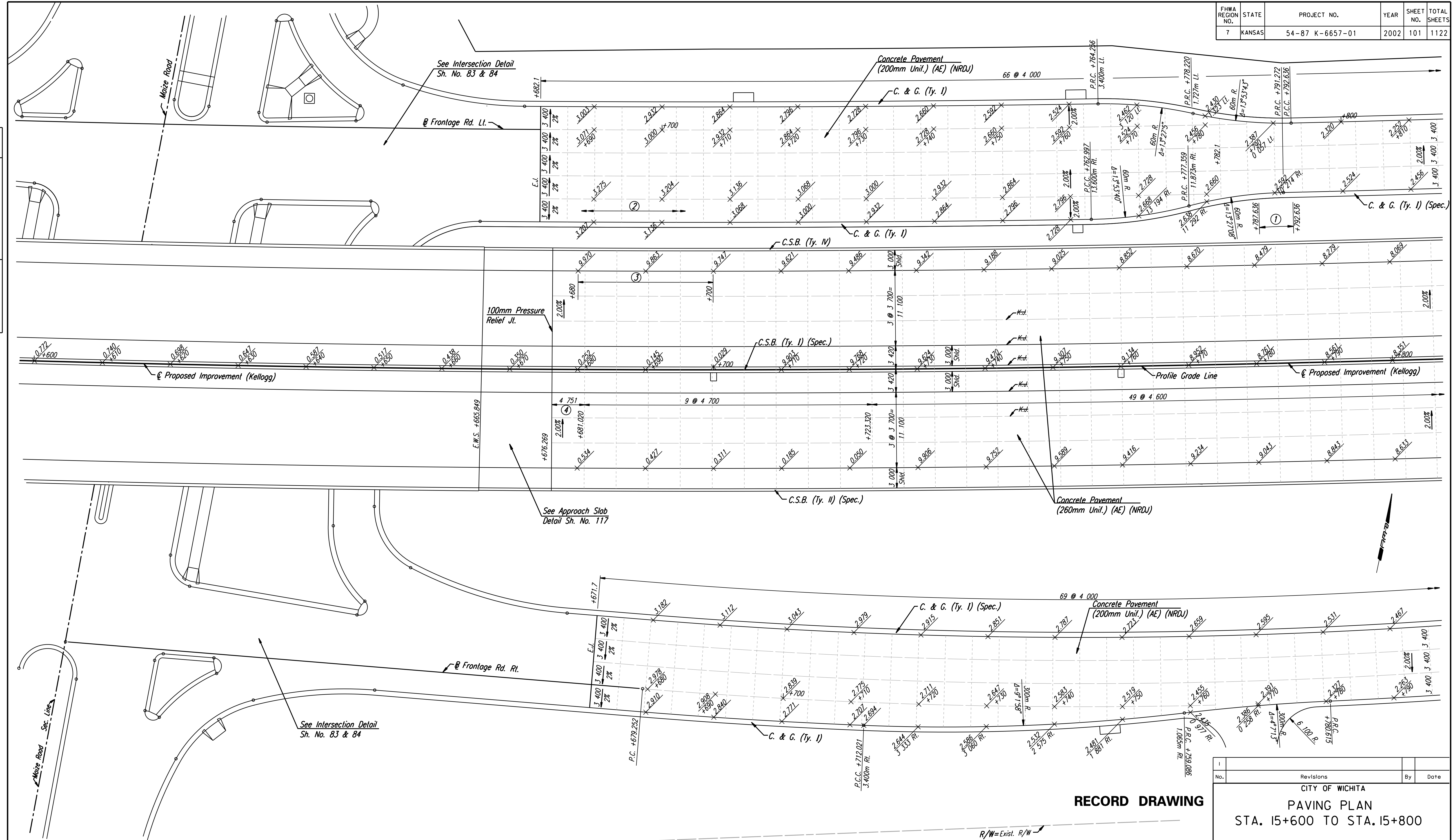


FHWA REGION NO.	STATE	PROJECT NO.	YEAR	SHEET NO.	TOTAL SHEETS
7	KANSAS	54-87 K-6657-01	2002	101	1122

DATE	
BY	
REFERENCES NOTED	
REFERENCES CHECKED	



DSNR: WDH OPER: JGP SCALE: 1:500
 I:/1997/97362/As-Builts/dgn's/Sh 101-pav156.dgn Last Rev: 8-13-07 By: gdr

- ① 5.0 m transition from C. & G. (Ty. I) to C. & G. (Ty. I) (Spec.).
- ② Sta. 15+682.1 to Sta. 15+791.272 x-slope on lane from 13.6 m Rt. to 10.2 m Rt. is -2.0% Rt.
- ③ Transition outside shld. x-slope from -2.0% @ Sta. 15+680 to -4.2% @ Sta. 15+700.
- ④ Length includes 100mm Pressure Relief Joint.

RECORD DRAWING

No.	Revisions	By	Date

CITY OF WICHITA
PAVING PLAN
 STA. 15+600 TO STA. 15+800

SEDGWICK COUNTY

Professional Engineering Consultants, P.A.
 303 S. TOPEKA • WICHITA, KANSAS 67202
 316-262-2691 • FAX 316-262-3003

Designed by	WDH	Checked by	WDH
Drawn by	JGP	Date	April, 2002
		Job No.	97362