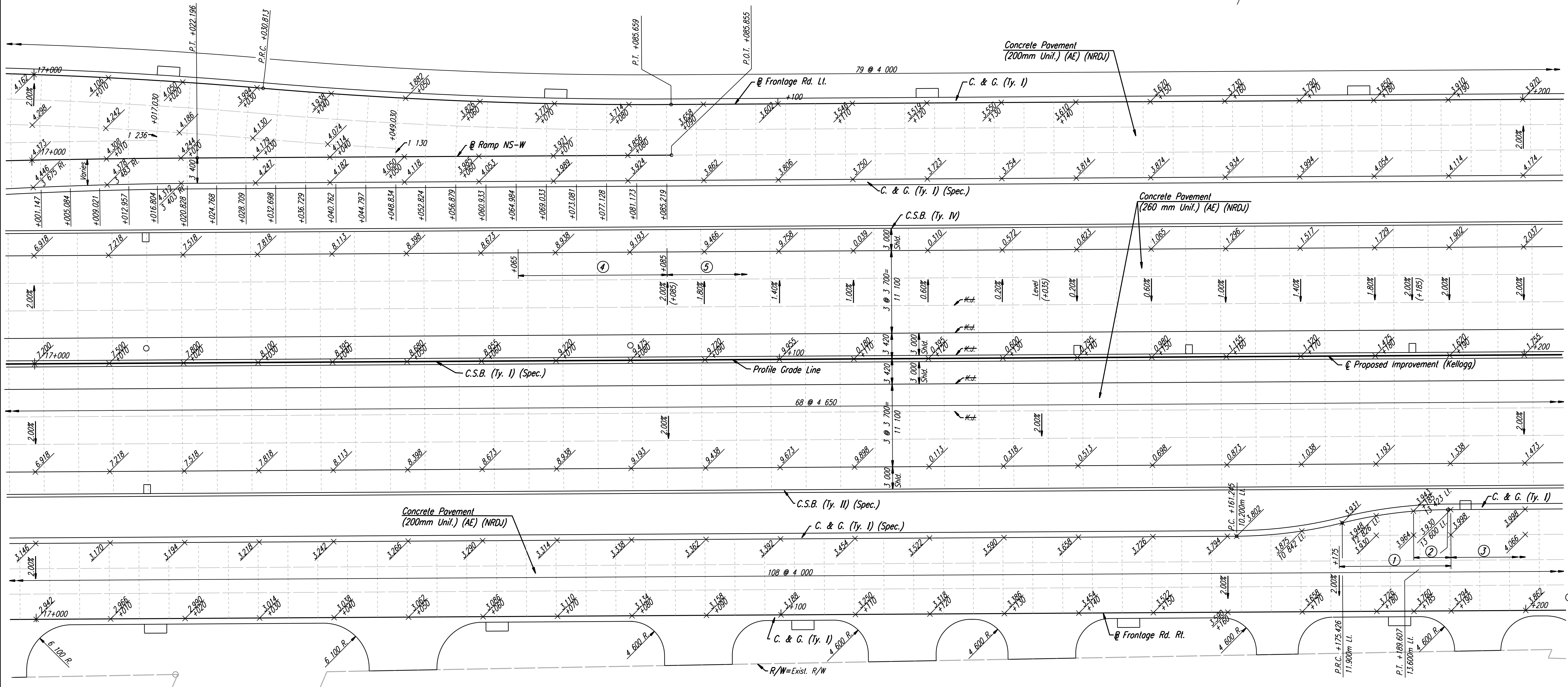


DATE	
BY	
REFERENCES NOTED	
REFERENCES CHECKED	



DSNR: WDH OPER: JGP SCALE: 1:250
 i:/1997/97362/As-Builts/agn's/Sh 108-pav170dgn Last Rev: 8-13-07 By: gdr

- ① Transition x-slope on U-Turn lane from +2.00% Lt. @ Sta. 17+175 to -2.00% Lt. @ Sta. 17+190.
- ② Transition from C. & G. (Ty. I) (Spec.) to C. & G. (Ty. I).
- ③ Fr. Rd. Rt. Sta. 17+190 to Sta. 17+265.850 x-slope on lane from 10.2m Lt. to 13.6m Lt. is -2.00% Lt.
- ④ Transition outside shoulder x-slope Lt. from -4.20% @ Sta. 17+065 to -2.00% @ Sta. 17+085.
- ⑤ See profile & superelevation diagrams for x-slope transitions.

RECORD DRAWING

No.	Revisions	By	Date

CITY OF WICHITA
PAVING PLAN
STA. 17+000 TO STA. 17+200
 SEDGWICK COUNTY

Professional Engineering Consultants, P.A.
 303 S. TOPEKA • WICHITA, KANSAS 67202
 316-262-2691 • FAX 316-262-3003

Designed by	WDH	Checked by	WDH
Drawn by	JGP	Date	April, 2002
		Job No.	97362