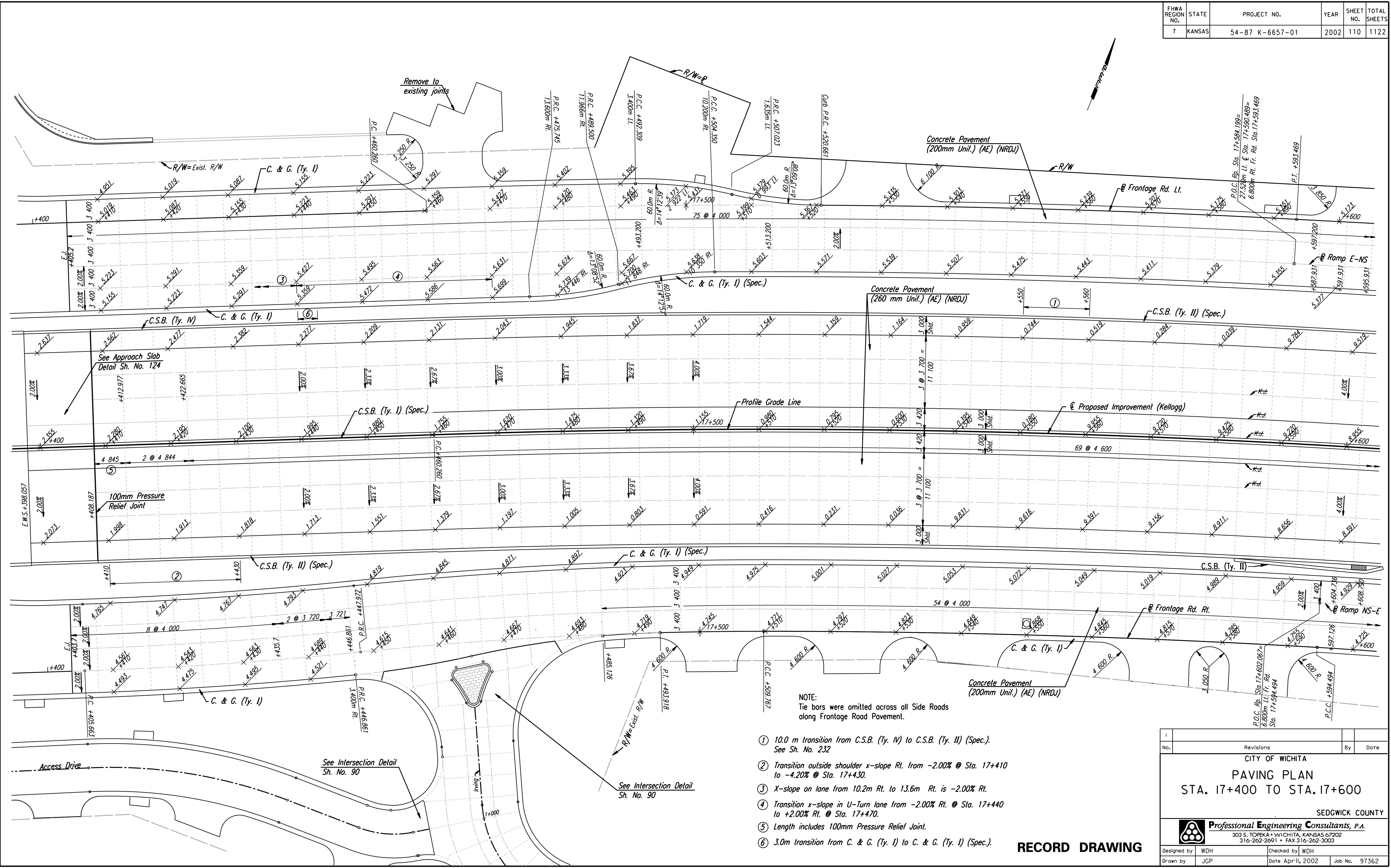


DATE	
BY	
REFERENCES NOTED	
REFERENCES CHECKED	

DSNR: WDH OPER: JGP SCALE: 1:250  
 I:/1997/97362/As-Builts/dgn's/Sh 110-pav174.dgn Last Rev: 8-13-07 By: gdr



NOTE:  
 Tie bars were omitted across all Side Roads along Frontage Road Pavement.

- ① 10.0 m transition from C.S.B. (Ty. IV) to C.S.B. (Ty. II) (Spec.). See Sh. No. 232
- ② Transition outside shoulder x-slope Rt. from -2.00% @ Sta. 17+410 to -4.20% @ Sta. 17+430.
- ③ X-slope on lane from 10.2m Rt. to 13.6m Rt. is -2.00% Rt.
- ④ Transition x-slope in U-Turn lane from -2.00% Rt. @ Sta. 17+440 to +2.00% Rt. @ Sta. 17+470.
- ⑤ Length includes 100mm Pressure Relief Joint.
- ⑥ 3.0m transition from C. & G. (Ty. I) to C. & G. (Ty. I) (Spec.).

**RECORD DRAWING**

No.	Revisions	By	Date

CITY OF WICHITA  
**PAVING PLAN**  
 STA. 17+400 TO STA. 17+600

SEDGWICK COUNTY

**Professional Engineering Consultants, P.A.**  
 303 S. TOPEKA • WICHITA, KANSAS 67202  
 316-262-2691 • FAX 316-262-3003

Designed by	WDH	Checked by	WDH
Drawn by	JGP	Date	April, 2002
		Job No.	97362